

REACH SUMMARY

REACH 1

T15S-R3E-S28SE

REACH 1

Valley and Channel Summary

Valley Characteristics (Percent Reach Length)

<u>Narrow Valley Floor</u>		<u>Broad Valley Floor</u>	
Steep V-shape	0	Constraining Terraces	0
Moderate V-shape	0	Multiple Terraces	100
Open V-shape	0	Wide Floodplain	0

Valley Width Index avg: 11.1 range: 3.5-20.0

Channel Morphology (Percent Reach Length)

<u>Constrained</u>		<u>Unconstrained</u>	
Hillslope	0	Single Channel	0
Bedrock	0	Multiple Channel	0
Terrace	100	Braided Channel	0
Alt. Terrace/Hill	0		
Landuse	0		

Channel Characteristics

<u>Type</u>	<u>Length(m)</u>	<u>Area (m2)</u>	<u>Dry Units</u>
Primary	517	2,036	0
Secondary	92	189	0

Channel Dimensions (m)

<u>Wetted</u>		<u>Active</u>		<u>Floodprone</u>	<u>First Terrace</u>
Width	4.1	Width	4.7	7.2	9.1
Depth	0.29	Height	0.6	1.1	2.1
		W:D ratio	8.1	Entrenchment	1.6

Stream Flow Type: MF Water Temp: 4.0-4.0°C
Avg. Unit Gradient: 6.7% Habitat Units/100m: 5.2

Riparian, Bank, and Wood Summary

	<u>Primary</u>	<u>Secondary</u>
Land Use:	YT	ST
Riparian Vegetation:	D15	S

Bank Condition and Shade

<u>Bank Status</u>	<u>Percent Reach Length</u>	<u>Shade (% of 180)</u>
Actively Eroding	0%	Reach avg: 0%
Undercut Banks	0%	Range: 0- 0

Large Woody Debris

	<u>Total</u>	<u>Total/100m</u>
All pieces (≥3m x 0.15m)	87	16.8
Volume (m ³)	106	20.4
Key pieces (≥10m x 0.6m)	4	0.8

HABITAT UNIT SUMMARY

REACH 1 T15S-R3E-S28SE REACH 1

HABITAT DETAIL

Habitat Type	Number Units	Total Length (m)	Avg Width (m)	Avg Depth (m)	Total Area (m ²)	Large Boulders (#>0.5m)	Substrate Percent Wetted Area					
							S/O	Snd	Grvl	Cbbl	Bldr	Bdrk
CASCADE/BOULDERS	9	216	4.1	0.21	813	0	0	3	17	29	51	0
CULVERT CROSSING	1	17	3.7	0.30	61	0	0	0	5	25	70	0
GLIDE	1	4	6.2	0.03	27	0	60	10	0	0	30	0
POOL-LATERAL SCOUR	2	14	4.0	0.65	51	0	3	4	4	28	63	0
POOL-PLUNGE	3	12	5.2	0.80	63	0	0	2	18	22	58	0
POOL-STRAIGHT SCOUR	3	27	3.6	0.48	97	0	23	7	13	25	32	0
RAPID/BOULDERS	7	232	3.9	0.17	896	0	0	6	16	35	42	0
RIFFLE	2	60	2.7	0.12	110	0	30	6	4	18	43	0
RIFFLE W/ POCKETS	1	26	3.6	0.20	94	0	0	5	15	30	50	0
STEP/BOULDERS	1	1	5.5	0.05	7	0	0	0	0	15	85	0
STEP/LOG	2	1	4.4	0.08	6	0	0	8	10	38	45	0
Total:	32	610	4.1	0.29	2,225	0	Avg: 6	5	13	28	49	0

HABITAT SUMMARY

Habitat Group	No. Units	Total Length (m)	Avg Width (m)	Avg Depth (m)	Wetted Area (m ²)	Percent	Large Boulders Number	#/100m ²
Dammed & BW Pools	0	0	-	-	0	0.00	0	0.0
Scour Pools	8	53	4.3	0.64	211	9.48	0	0.0
Glides	1	4	6.2	0.03	27	1.23	0	0.0
Riffles	3	86	3.0	0.14	204	9.16	0	0.0
Rapids	7	232	3.9	0.17	896	40.27	0	0.0
Cascades	9	216	4.1	0.21	813	36.54	0	0.0
Step/Falls	3	3	4.8	0.07	13	0.57	0	0.0
Dry	0	0	-	-	0	0.00	0	0.0

POOL SUMMARY

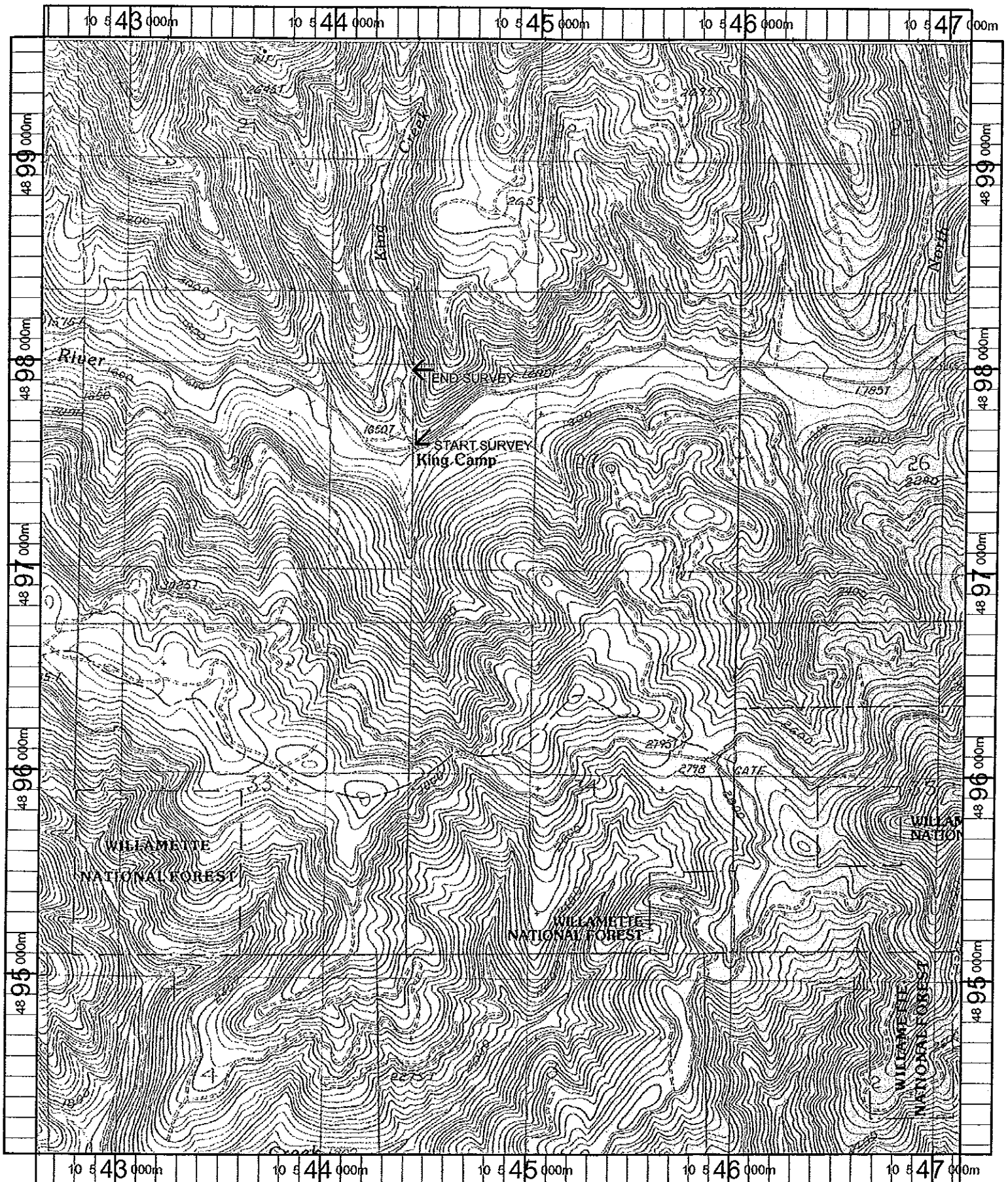
All Pools	<u>Total</u>	<u>#/Km</u>
	8	13.1
Pools ≥1m deep:	1	1.6
Complex pools (LWD pieces ≥3):	2	3.3
Pool Frequency (channel widths/pool):	16.2	
Residual pool depth (avg)	0.44m	

STREAM SUMMARY

KING CREEK PRE-TX

Number Units	Total Length (m)	Avg Width (m)	Avg Depth (m)	Total Area (m ²)	Substrate Percent Wetted Area						Total Large Boulder
					S/O	Sand	Grvl	Cbbl	Bldr	Bdrk	
32	610	4.1	0.29	2,225	6	5	13	28	49	0	0

Habitat Group	Wetted Area	
	(m ²)	Percent
Scour Pool	211	9.5
Backwater Pools	0	0.0
Glide	27	1.2
Riffle	204	9.2
Rapid	896	40.3
Cascade	813	36.5
Step	13	0.6
Dry	0	0.0



Name: MT HAGAN
 Date: 10/13/100
 Scale: 1 inch equals 2000 feet

Location: 10 544760 E 4896849 N
 Caption: KING CREEK RESTORATION SITE

Calopteryx basin
Calopteryx