



OREGON DEPARTMENT OF FISH AND WILDLIFE

BALD BARNEY CREEK POST-TX (W-195)

HABITAT INVENTORY

Report Date: 5/6/03

Survey Date:

2/12/03

REACH		T12S-R02E-S05NW					REACH					
HABITAT DETAIL												
Habitat Type	Number Units	Total Length (m)	Avg Width (m)	Avg Depth (m)	Total Area (m <sup>2</sup> )	Large Boulders (#>0.5m)	Substrate Percent Wetted Area					
							S/O	Snd	Grvl	Cbl	Bldr	Bdrk
CASCADE/BEDROCK	4	64	2.5	0.18	174	0	0	0	2	9	3	85
CASCADE/BOULDERS	8	137	3.3	0.15	478	0	10	6	18	32	17	18
DRY CHANNEL	1	9	0.8	0.00	8	0	10	10	10	10	60	0
DRY UNIT	1	11	1.0	0.00	11	0	30	10	0	30	30	0
POOL-ISOLATED	1	3	1.9	0.30	6	0	100	0	0	0	0	0
POOL-LATERAL SCOUR	4	41	4.1	0.64	179	0	8	12	31	19	5	25
POOL-PLUNGE	6	39	3.8	0.61	151	0	1	9	18	33	8	31
RAPID/BEDROCK	4	74	3.5	0.18	284	0	0	0	4	2	5	89
RAPID/BOULDERS	10	227	3.8	0.19	891	0	0	5	29	43	16	6
STEP/BEDROCK	1	2	2.8	0.10	4	0	0	0	0	10	20	70
STEP/BOULDERS	1	1	1.1	0.00	1	0	0	0	10	20	70	0
<b>Total:</b>	<b>41</b>	<b>608</b>	<b>3.3</b>	<b>0.27</b>	<b>2,185</b>	<b>0</b>	<b>Avg 6</b>	<b>5</b>	<b>17</b>	<b>26</b>	<b>14</b>	<b>31</b>

HABITAT SUMMARY									
Habitat Group	Number Units	Total Length (m)	Avg Width (m)	Avg Depth (m)	Wetted Area		Large Boulders		
					(m <sup>2</sup> )	Percent	Number	(# / 100m <sup>2</sup> )	
Dammed & BW Pools	1	3	1.9	0.30	6	0.26%	0	0.0	
Scour Pools	10	80	3.9	0.62	330	15.10%	0	0.0	
Glides	0	0			0	0.00%	0	0.0	
Riffles	0	0			0	0.00%	0	0.0	
Rapids	14	301	3.7	0.18	1,174	53.74%	0	0.0	
Cascades	12	202	3.0	0.16	651	29.81%	0	0.0	
Step/Falls	2	2	2.0	0.05	5	0.24%	0	0.0	
Dry	2	20	0.9	0.00	19	0.85%	0	0.0	
Culverts	0	0			0	0.00%	0	0.0	

POOL SUMMARY		
	<u>Total</u>	<u># / Km</u>
All Pools:	11	20.9
Pools >=1m deep:	0	0.0
Complex pools (LWD pieces>=3):	2	3.8
Pool frequency (channel widths/pool):	8.6	
Residual pool depth (avg):	0.48	

**STREAM SUMMARY**

**BALD BARNEY CREEK POST-TX (W-195)**

Number Units	Total Length (m)	Avg Width (m)	Avg Depth (m)	Total Area (m <sup>2</sup> )	Substrate Percent Wetted Area						Large Boulders (>0.5m)
					S/O	Snd	Grvl	Cbl	Bldr	Bdrk	
41	608	3.3	0.27	2,185	6	5	17	26	14	31	

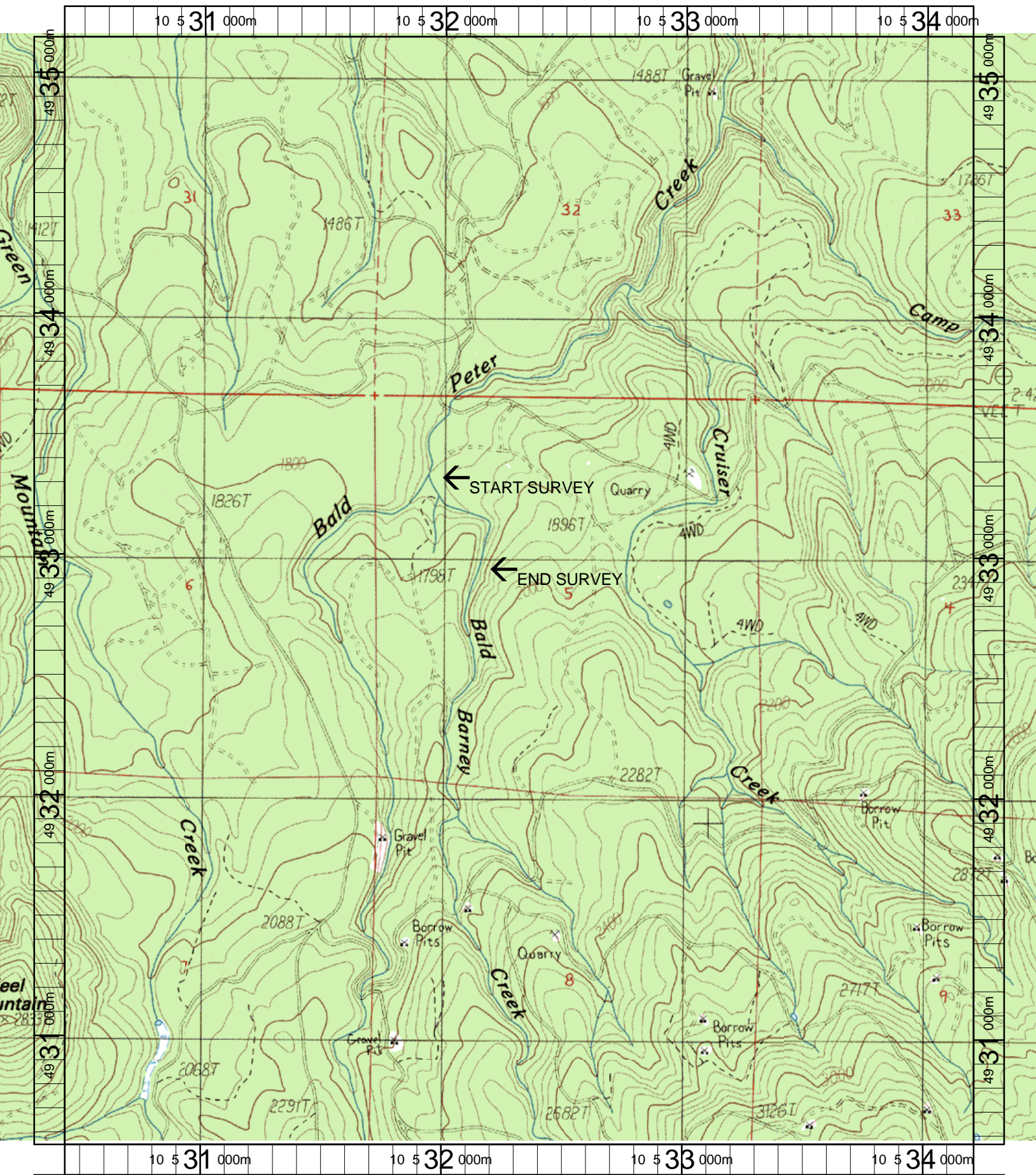
Habitat Group	Wetted Area	
	(m <sup>2</sup> )	Percent
Dammed & BW Pools	6	0.26%
Scour Pools	330	15.10%
Glides	0	0.00%
Riffles	0	0.00%
Rapids	1,174	53.74%
Cascades	651	29.81%
Step/Falls	5	0.24%
Dry	19	0.85%
Culverts	0	0.00%

# Comment Summary

## Restoration Monitoring Sites 2003

MONITORING AREA: 8-W    SITE ID: 195    BALD BARNEY CREEK POST-TX (W-195)

UNIT#	TYPE	CHAN	DIST. (m)	COMMENTS	NOTE ESTIMATOR	NOTE NUMERATOR
1	RB	00	25		T=5.3C/0915	
4	RB	00	100	SS/		
5	CB	01	116.4	/TJ		
6	CB	11	116.4		TRIB UNIT	
8	RB	01	145.7	HS	LOGS	
9	RB	02	145.7	/SS		
11	SB	02	145.7	DC	DRY STEP, H=0.5M	
13	CB	01	163.2	HS	LOGS	
16	LP	00	212.5	HS	LOGS	
20	CB	00	271.6		.5M POCKET RT	
22	SR	00	278.6		H=0.6M	
23	CB	00	298.1		.6M POCKET	
25	CR	00	320	SS/		
28	CR	00	347.9	SS/	.6M POCKET, LG SEEP	
34	RB	01	462		.45M DEEP POCKET	
39	CB	02	515		SIGN @ PP-PTC FORKED	
40	PP	00	526.4		END RT SIDE ALDER	
41	IP	10	526.4		T=7C/1245	



Name: KEEL MT  
 Date: 6/11/2003  
 Scale: 1 inch equals 1666 feet

Location: 10 532309 E 4932861 N  
 Caption: BALD BARNEY CREEK RESTORATION SITE - SOUTH  
 SANTIAM BASIN