

REACH 1

T3S-R5E-34SE

REACH 1

Valley and Channel Summary

Valley Characteristics (Percent Reach Length)

<u>Narrow Valley Floor</u>		<u>Broad Valley Floor</u>	
Steep V-shape	0	Constraining Terraces	0
Moderate V-shape	0	Multiple Terraces	0
Open V-shape	0	Wide Floodplain	100

Valley Width Index avg: 4.0 range: 4.0-4.0

Channel Morphology (Percent Reach Length)

<u>Constrained</u>		<u>Unconstrained</u>	
Hillslope	0	Single Channel	100
Bedrock	0	Multiple Channel	0
Terrace	0	Braided Channel	0
Alt. Terrace/Hill	0		
Landuse	0		

Channel Characteristics

<u>Type</u>	<u>Length(m)</u>	<u>Area (m2)</u>	<u>Dry Units</u>
Primary	523	2,375	0
Secondary	222	377	3

Channel Dimensions (m)

<u>Wetted</u>		<u>Active</u>		<u>Floodprone</u>	<u>First Terrace</u>
Width	3.0	Width	7.4	21.4	9.0
Depth	0.28	Height	0.5	1.0	0.8
		W:D ratio	16.1	Entrenchment	3.1

Stream Flow Type: MF Water Temp: 0.0-0.0°C
 Avg. Unit Gradient: 3.1% Habitat Units/100m: 6.6

Riparian, Bank, and Wood Summary

	<u>Primary</u>	<u>Secondary</u>
Land Use:	TH	ST
Riparian Vegetation:	D15	S

Bank Condition and Shade

<u>Bank Status</u>	<u>Percent Reach Length</u>	<u>Shade (% of 180)</u>
Actively Eroding	0%	Reach avg: 0%
Undercut Banks	0%	Range: 0- 0

Large Woody Debris

	<u>Total</u>	<u>Total/100m</u>
All pieces ($\geq 3m \times 0.15m$)	87	16.6
Volume (m ³)	221	42.4
Key pieces ($\geq 10m \times 0.6m$)	14	2.7

REACH 1

T3S-R5E-34SE

REACH 1

HABITAT DETAIL

Habitat Type	Number Units	Total Length (m)	Avg Width (m)	Avg Depth (m)	Total Area (m ²)	Large Boulders (>0.5m)	Substrate Percent Wetted Area					
							S/O	Snd	Grvl	Cbbl	Bldr	Bdrk
CASCADE/BOULDERS	3	32	4.4	0.32	132	0	0	16	33	46	5	0
CULVERT CROSSING	1	10	1.4	0.20	13	0	0	0	40	60	0	0
DRY UNITS	2	10	1.8	0.00	17	0	40	10	10	40	0	0
POOL-ALCOVE	2	15	1.2	0.19	17	0	43	52	5	0	0	0
POOL-ISOLATED	1	3	1.4	0.20	4	0	100	0	0	0	0	0
POOL-LATERAL SCOUR	13	107	3.5	0.45	409	0	22	46	23	8	1	0
POOL-PLUNGE	2	6	3.4	0.50	20	0	14	63	14	10	0	0
POOL-STRAIGHT SCOUR	2	21	2.3	0.34	46	0	40	21	32	7	0	0
PUDDLED CHANNEL	1	9	0.7	0.05	6	0	27	64	9	0	0	0
RAPID/BOULDERS	13	343	3.1	0.22	1,268	0	1	17	35	44	2	0
RIFFLE	7	186	3.9	0.21	814	0	15	23	35	26	0	0
STEP/COBBLE	1	4	1.5	0.05	5	0	0	40	50	10	0	0
STEP/LOG	1	1	0.5	0.01	1	0	67	33	0	0	0	0
Total:	49	745	3.0	0.28	2,752	0	Avg:18	30	27	24	1	0

HABITAT SUMMARY

Habitat Group	No. Units	Total Length (m)	Avg Width (m)	Avg Depth (m)	Wetted Area (m ²)	Percent	Large Boulders Number	#/100m ²
Dammed & BW Pools	3	18	1.3	0.19	21	0.76	0	0.0
Scour Pools	17	134	3.3	0.44	475	17.26	0	0.0
Glides	0	0	-	-	0	0.00	0	0.0
Riffles	7	186	3.9	0.21	814	29.59	0	0.0
Rapids	13	343	3.1	0.22	1,268	46.07	0	0.0
Cascades	3	32	4.4	0.32	132	4.78	0	0.0
Step/Falls	2	5	1.0	0.03	6	0.21	0	0.0
Dry	3	19	1.4	0.02	23	0.85	0	0.0

POOL SUMMARY

All Pools	<u>Total</u>	<u>#/Km</u>
	20	26.8
Pools ≥1m deep:	0	0.0
Complex pools (LWD pieces ≥3):	6	8.1
Pool Frequency (channel widths/pool):	5.0	
Residual pool depth (avg)	0.30m	

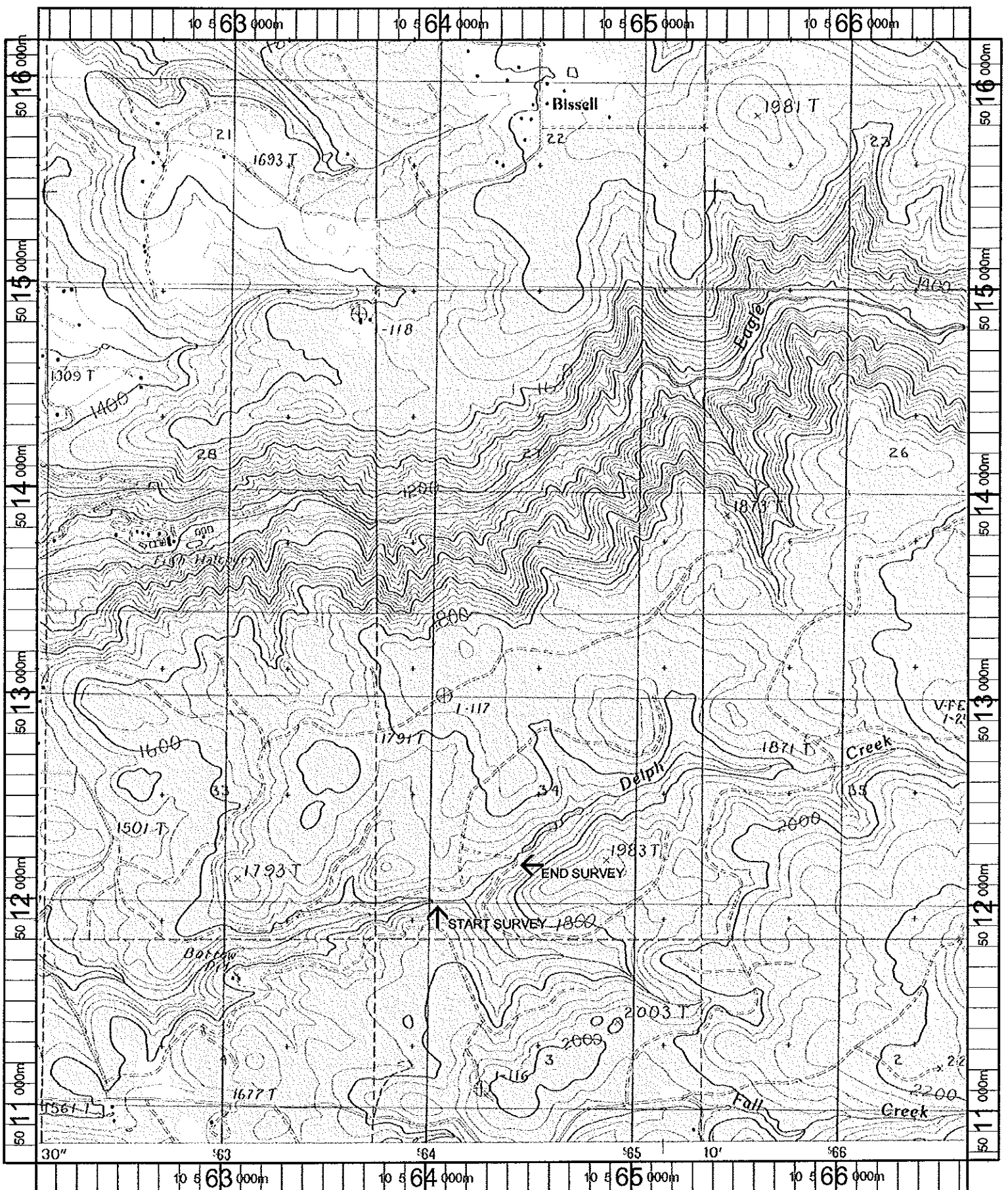
STREAM SUMMARY

DELPH CREEK

Number Units	Total Length (m)	Avg Width (m)	Avg Depth (m)	Total Area (m ²)	Substrate Percent Wetted Area						Total Large Boulder
					S/O	Sand	Grvl	Cbbl	Bldr	Bdrk	
49	745	3.0	0.28	2,752	18	30	27	24	1	0	0

Wetted Area

Habitat Group	(m ²)	Percent
Scour Pool	475	17.3
Backwater Pools	21	0.8
Glide	0	0.0
Riffle	814	29.6
Rapid	1,268	46.1
Cascade	132	4.8
Step	6	0.2
Dry	23	0.8



Name: CHERRYVILLE
 Date: 10/16/100
 Scale: 1 inch equals 2000 feet

Location: 10 564246 E 5013450 N
 Caption: DELPH CREEK RESTORATION SITE
Chockoma Basin