

REACH

T03S-R05E-S01SE

REACH

Valley and Channel Summary

Valley Characteristics (Percent Reach Length)

<u>Narrow Valley Floor</u>		<u>Broad Valley Floor</u>	
Steep V-shape	0%	Constraining Terraces	0%
Moderate V-shape	0%	Multiple Terraces	100%
Open V-shape	0%	Wide Floodplain	0%
Valley Width Index	3.4	VWI Range:	2.2 - 4.5

Channel Morphology (Percent Reach Length)

<u>Constrained</u>		<u>Unconstrained</u>	
Hillslope	0%	Single Channel	100%
Bedrock	0%	Multiple Channel	0%
Terrace	0%	Braided Channel	0%
Alt. Terrace/Hill	0%		
Landuse	0%		

Channel Characteristics

<u>Type</u>	<u>Length (m)</u>	<u>Area (m2)</u>	<u>Dry Units</u>
Primary	509	2,145	0
Secondary	38	46	1

Channel Dimensions (m)

<u>Wetted</u>		<u>Active</u>		<u>Floodprone</u>	<u>First Terrace</u>
Width	3.7	Width	5.6	13.3	14.0
Depth	0.28	Height	0.5	1.1	1.7
		W:D ratio	10.5	Entrenchment	2.5
Stream Flow Type:	HF	Water temp (C):	6.5	-	6.5
Avg. Unit Gradient:	3.8%	Habitat Units/100m:	5.9		

Riparian, Bank, and Wood Summary

	<u>Primary</u>	<u>Secondary</u>
Land Use:	YT	ST
Riparian Vegetation:	D15	C30

Bank Condition and Shade

<u>Bank Status</u>	<u>Percent Reach Length</u>	<u>Shade (% of 180)</u>
Actively Eroding:		Reach avg:
Undercut Banks:		Range: -

Large Wood Debris

	<u>Total</u>	<u>Total / 100m</u>
All pieces ($\geq 3\text{m} \times 0.15\text{m}$):	152	29.9
Volume (m^3):	162	31.9
Key pieces ($\geq 10\text{m} \times 0.60\text{m}$):	9	1.8

OREGON DEPARTMENT OF FISH AND WILDLIFE

TROUT CREEK UPPER POST-TX (L-200)

HABITAT INVENTORY

Report Date: 5/6/03

Survey Date:

2/18/03

REACH		T03S-R05E-S01SE					REACH						
Habitat Type	Number Units	HABITAT DETAIL					Substrate						
		Total	Avg	Avg	Total	Large	Percent Wetted Area						
		Length (m)	Width (m)	Depth (m)	Area (m ²)	Boulders (#>0.5m)	S/O	Snd	Grvl	Cbl	Bldr	Bdrk	
POOL-DAMMED	3	27	4.3	0.52	113	0	1	23	53	14	2	8	
POOL-LATERAL SCOUR	3	22	2.8	0.43	58	0	0	15	49	28	8	0	
POOL-PLUNGE	2	6	4.9	0.55	30	0	0	15	73	10	3	0	
PUDDLED UNIT	1	18	0.4	0.02	7	0	5	29	57	10	0	0	
RAPID/BEDROCK	2	111	4.8	0.13	530	0	0	0	5	5	0	90	
RAPID/BOULDERS	11	281	3.8	0.25	1,118	0	0	4	26	48	17	4	
RIFFLE	3	79	4.2	0.22	321	0	0	8	50	34	7	2	
STEP/COBBLE	1	1	2.5	0.10	3	0	0	0	10	85	5	0	
STEP/LOG	4	4	3.3	0.16	11	0	0	12	74	14	0	0	
Total:	30	547	3.7	0.28	2,191	0	Avg	0	10	42	31	8	

HABITAT SUMMARY								
Habitat Group	Number Units	Total Length (m)	Avg Width (m)	Avg Depth (m)	Wetted Area		Large Boulders	
					(m ²)	Percent	Number	(# / 100m ²)
Dammed & BW Pools	3	27	4.3	0.52	113	5.15%	0	0.0
Scour Pools	5	28	3.6	0.48	88	4.02%	0	0.0
Glides	0	0			0	0.00%	0	0.0
Riffles	3	79	4.2	0.22	321	14.66%	0	0.0
Rapids	13	391	3.9	0.23	1,648	75.23%	0	0.0
Cascades	0	0			0	0.00%	0	0.0
Step/Falls	5	5	3.1	0.15	13	0.61%	0	0.0
Dry	1	18	0.4	0.02	7	0.33%	0	0.0
Culverts	0	0			0	0.00%	0	0.0

POOL SUMMARY		
	<u>Total</u>	<u># / Km</u>
All Pools:	8	15.7
Pools >=1m deep:	0	0.0
Complex pools (LWD pieces>=3):	2	3.9
Pool frequency (channel widths/pool):	12.2	
Residual pool depth (avg):	0.32	

STREAM SUMMARY

TROUT CREEK UPPER POST-TX (L-200)

Number Units	Total Length (m)	Avg Width (m)	Avg Depth (m)	Total Area (m ²)	Substrate Percent Wetted Area						Large Boulders (#>0.5m)
					S/O	Snd	Grvl	Cbl	Bldr	Bdrk	
30	547	3.7	0.28	2,191	0	10	42	31	8	8	

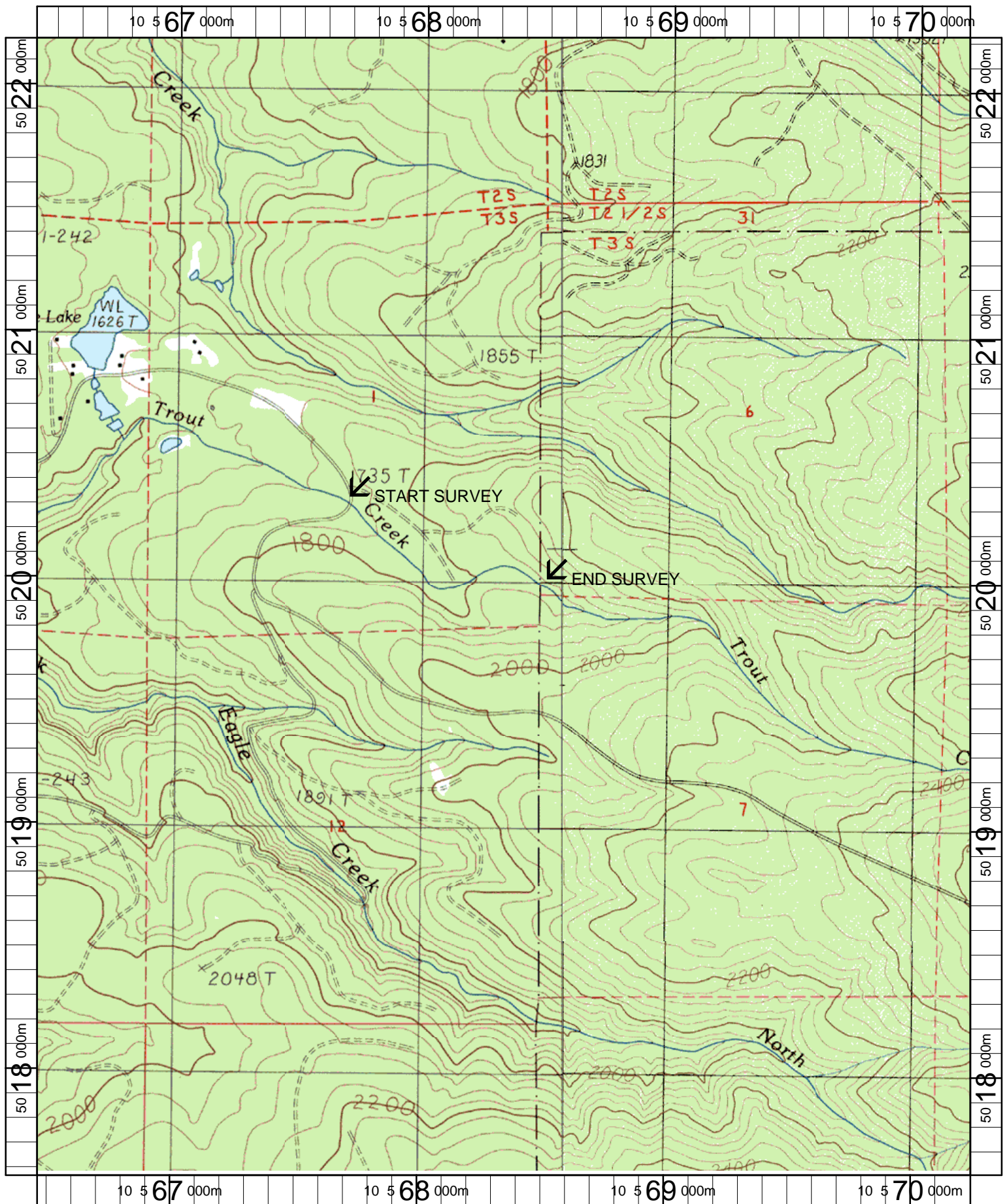
Habitat Group	Wetted Area	
	(m ²)	Percent
Dammed & BW Pools	113	5.15%
Scour Pools	88	4.02%
Glides	0	0.00%
Riffles	321	14.66%
Rapids	1,648	75.23%
Cascades	0	0.00%
Step/Falls	13	0.61%
Dry	7	0.33%
Culverts	0	0.00%

Comment Summary

Restoration Monitoring Sites 2003

MONITORING AREA: 7-L SITE ID: 200 TROUT CREEK UPPER POST-TX (L-200)

UNIT#	TYPE	CHAN	DIST. (m)	COMMENTS	NOTE ESTIMATOR	NOTE NUMERATOR
1	RB	00	10.5		START @ TOP OF CC	
2	RB	01	22		SIGN ON 15-30 ALDER RT	
3	LP	01	30.3	/SS	T=6.5C	
4	SC	01	31.3		H=.3M	
6	PP	02	31.3		POSS. REDD @TAILOUT	
7	SL	02	31.3		H=.6M	
9	RB	00	76.3	/SS		
11	RB	00	118.9	HS?	CUT ENDS ON BLOWDO	
13	PP	00	147.2	BV		
14	SL	00	147.7		H=.4M	
20	SL	00	241		H=.5M	
21	DP	00	252.5		HARDPAN	
22	RB	00	290		HARDPAN	
23	RB	00	337		HARDPAN	
24	RR	00	382	SS/, DJ		
25	SL	00	382.8		H=.4M	
29	RB	01	508.8	BV		
30	PD	02	508.8	/LS	HILLSLOPE ON RT	



Name: CHERRYVILLE
 Date: 6/11/2003
 Scale: 1 inch equals 1666 feet

Location: 10 568328 E 5019898 N
 Caption: TROUT CREEK UPPER RESTORATION SITE - CLACKAMAS BASIN