



OREGON DEPARTMENT OF FISH AND WILDLIFE

MILTON CREEK PRE-TX (L-199)

HABITAT INVENTORY

Report Date: 6/13/03

Survey Date:

1/21/03

REACH		T04N-R01W-S40NE					REACH						
HABITAT DETAIL													
Habitat Type	Number Units	Total Length (m)	Avg Width (m)	Avg Depth (m)	Total Area (m <sup>2</sup> )	Large Boulders (#>0.5m)	Substrate Percent Wetted Area						
							S/O	Snd	Grvl	Cbl	Bldr	Bdrk	
POOL-BACKWATER	1	8	3.6	0.40	27	0	30	25	10	30	5	0	
POOL-LATERAL SCOUR	11	367	10.1	0.78	4,134	0	15	11	33	30	8	3	
PUDDLED UNIT	1	17	0.3	0.01	5	0	0	10	50	40	0	0	
RIFFLE	5	145	9.9	0.49	1,463	0	5	8	33	43	9	3	
STEP/COBBLE	4	29	9.7	0.26	289	0	2	9	47	29	13	0	
<b>Total:</b>	<b>22</b>	<b>565</b>	<b>9.3</b>	<b>0.57</b>	<b>5,918</b>	<b>0</b>	<b>Avg 10</b>	<b>11</b>	<b>35</b>	<b>33</b>	<b>8</b>	<b>2</b>	

HABITAT SUMMARY									
Habitat Group	Number Units	Total Length (m)	Avg Width (m)	Avg Depth (m)	Wetted Area		Large Boulders		
					(m <sup>2</sup> )	Percent	Number	(# / 100m <sup>2</sup> )	
Dammed & BW Pools	1	8	3.6	0.40	27	0.46%	0	0.0	
Scour Pools	11	367	10.1	0.78	4,134	69.85%	0	0.0	
Glides	0	0			0	0.00%	0	0.0	
Riffles	5	145	9.9	0.49	1,463	24.72%	0	0.0	
Rapids	0	0			0	0.00%	0	0.0	
Cascades	0	0			0	0.00%	0	0.0	
Step/Falls	4	29	9.7	0.26	289	4.89%	0	0.0	
Dry	1	17	0.3	0.01	5	0.08%	0	0.0	
Culverts	0	0			0	0.00%	0	0.0	

POOL SUMMARY		
	Total	# / Km
All Pools:	12	23.1
Pools >=1m deep:	2	3.8
Complex pools (LWD pieces>=3):	1	1.9
Pool frequency (channel widths/pool):	2.9	
Residual pool depth (avg):	0.45	

**STREAM SUMMARY**

**MILTON CREEK PRE-TX (L-199)**

Number Units	Total Length (m)	Avg Width (m)	Avg Depth (m)	Total Area (m <sup>2</sup> )	Substrate Percent Wetted Area						Large Boulders (#>0.5m)
					S/O	Snd	Grvl	Cbl	Bldr	Bdrk	
22	565	9.3	0.57	5,918	10	11	35	33	8	2	

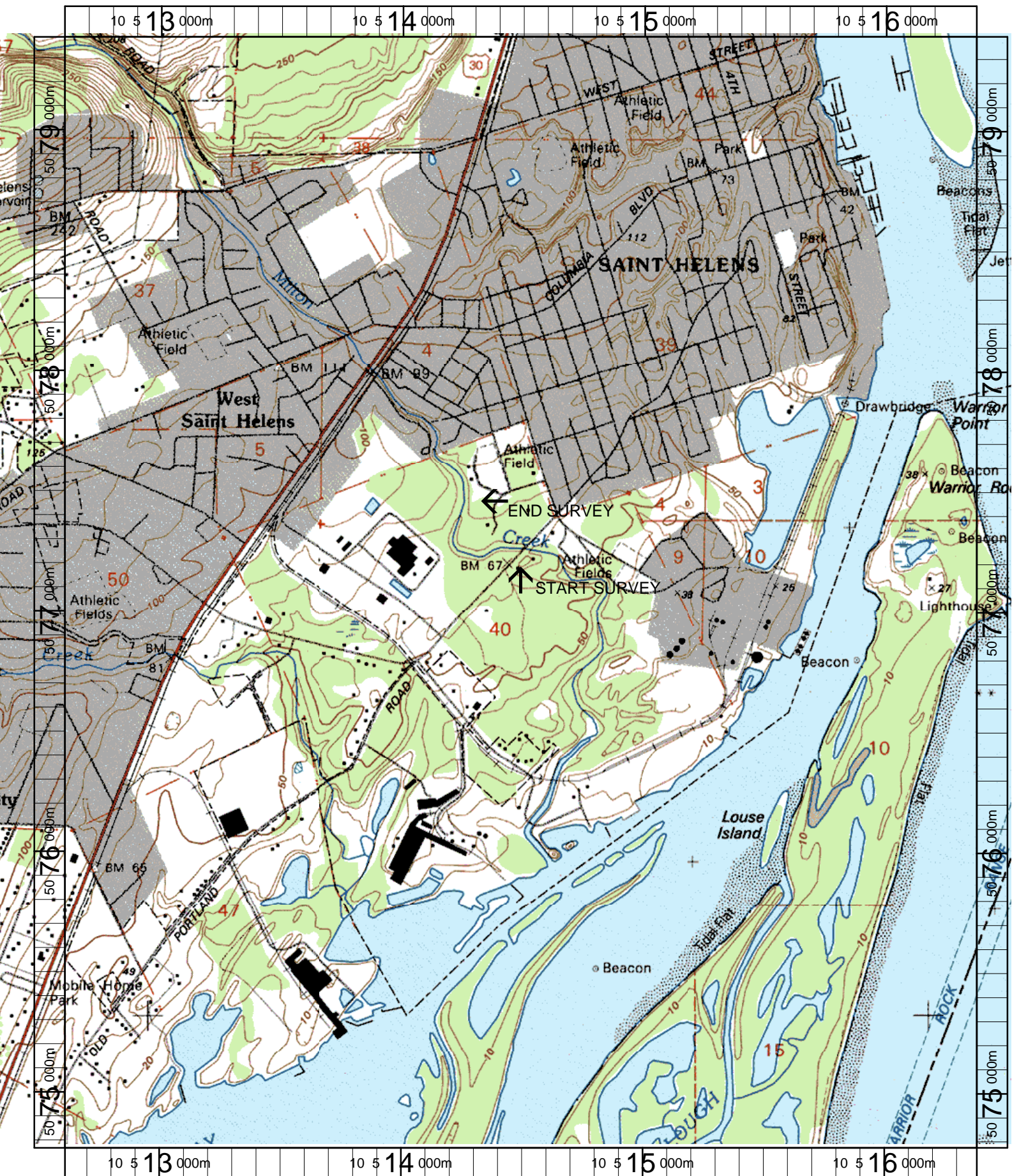
Habitat Group	Wetted Area	
	(m <sup>2</sup> )	Percent
Dammed & BW Pools	27	0.46%
Scour Pools	4,134	69.85%
Glides	0	0.00%
Riffles	1,463	24.72%
Rapids	0	0.00%
Cascades	0	0.00%
Step/Falls	289	4.89%
Dry	5	0.08%
Culverts	0	0.00%

# Comment Summary

## Restoration Monitoring Sites 2003

MONITORING AREA: 7-L SITE ID: 199 MILTON CREEK POST-TX (L-199)

<u>UNIT#</u>	<u>TYPE</u>	<u>CHAN</u>	<u>DIST. (m)</u>	<u>COMMENTS</u>	<u>NOTE ESTIMATOR</u>	<u>NOTE NUMERATOR</u>
1	LP	00	32.6	CS/,BC,SD/	BC ON OLD PORTLAND R	
3	LP	00	67.7	BV	CHEWED STICKS	
6	RI	00	130.6		TRAIL XING	
11	LP	00	202.6		PICNIC AREA	
14	RI	01	306.6		OLD BARREL IN WATER	
15	LP	02	306.6		NO FLOW IN SIDE CHNL	
16	PD	02	306.6	CE/		
18	RI	00	379.1	BV		
19	LP	00	410.8		TRAIL ENTRANCE/	
22	RI	00	520		T=6C/1515	



Name: ST HELENS  
 Date: 6/11/2003  
 Scale: 1 inch equals 1666 feet

Location: 10 514487 E 5077084 N  
 Caption: MILTON CREEK RESTORATION SITE - LOWER COLUMBIA BASIN