

REACH

T07N-R04W-S35SW

REACH

Valley and Channel Summary

Valley Characteristics (Percent Reach Length)

<u>Narrow Valley Floor</u>		<u>Broad Valley Floor</u>	
Steep V-shape	0%	Constraining Terraces	0%
Moderate V-shape	0%	Multiple Terraces	100%
Open V-shape	0%	Wide Floodplain	0%
Valley Width Index	2.8	VWI Range:	1.8 - 3.8

Channel Morphology (Percent Reach Length)

<u>Constrained</u>		<u>Unconstrained</u>	
Hillslope	0%	Single Channel	100%
Bedrock	0%	Multiple Channel	0%
Terrace	0%	Braided Channel	0%
Alt. Terrace/Hill	0%		
Landuse	0%		

Channel Characteristics

<u>Type</u>	<u>Length (m)</u>	<u>Area (m2)</u>	<u>Dry Units</u>
Primary	543	2,531	0
Secondary	54	85	0

Channel Dimensions (m)

<u>Wetted</u>		<u>Active</u>		<u>Floodprone</u>	<u>First Terrace</u>
Width	4.4	Width	9.1	24.2	33.0
Depth	0.40	Height	0.9	1.7	3.0
		W:D ratio	10.7	Entrenchment	2.8

Stream Flow Type:	MF	Water temp (C):	8.0 - 8.0
Avg. Unit Gradient:	3.5%	Habitat Units/100m:	5.3

Riparian, Bank, and Wood Summary

	<u>Primary</u>	<u>Secondary</u>
Land Use:	ST	
Riparian Vegetation:	C15	S

Bank Condition and Shade

<u>Bank Status</u>	<u>Percent Reach Length</u>	<u>Shade (% of 180)</u>
Actively Eroding:		Reach avg:
Undercut Banks:		Range: -

Large Wood Debris

	<u>Total</u>	<u>Total / 100m</u>
All pieces ($\geq 3\text{m} \times 0.15\text{m}$):	51	9.4
Volume (m^3):	73	13.5
Key pieces ($\geq 10\text{m} \times 0.60\text{m}$):	8	1.5

OREGON DEPARTMENT OF FISH AND WILDLIFE

MILLER CREEK PRE-TX (L-193)

HABITAT INVENTORY

Report Date: 5/6/03

Survey Date:

1/29/03

REACH	T07N-R04W-S35SW							REACH					
Habitat Type	Number Units	Total Length (m)	Avg Width (m)	Avg Depth (m)	Total Area (m ²)	Large Boulders (#>0.5m)	Substrate						
							Percent Wetted Area						
							S/O	Snd	Grvl	Cbl	Bldr	Bdrk	
CULVERT CROSSING	1	40	2.5	0.25	100	0	0	0	0	20	80	0	
POOL-ALCOVE	1	17	2.5	0.30	43	0	22	26	13	17	22	0	
POOL-BACKWATER	4	10	2.9	0.37	29	0	50	40	6	4	0	0	
POOL-PLUNGE	2	19	8.9	1.45	200	0	0	14	26	24	10	26	
POOL-STRAIGHT SCOUR	1	6	4.1	0.70	26	0	0	19	25	19	6	31	
RAPID/BOULDERS	8	210	4.6	0.31	955	0	3	17	26	27	25	1	
RIFFLE	11	290	4.2	0.30	1,241	0	8	23	26	24	15	4	
STEP/LOG	1	5	5.1	0.10	23	0	0	26	37	26	11	0	
Total:	29	597	4.4	0.40	2,616	0	Avg 11	23	22	22	18	5	

HABITAT SUMMARY									
Habitat Group	Number Units	Total Length (m)	Avg Width (m)	Avg Depth (m)	Wetted Area		Large Boulders		
					(m ²)	Percent	Number	(# / 100m ²)	
Dammed & BW Pools	5	27	2.8	0.36	72	2.74%	0	0.0	
Scour Pools	3	26	7.3	1.20	226	8.63%	0	0.0	
Glides	0	0			0	0.00%	0	0.0	
Riffles	11	290	4.2	0.30	1,241	47.42%	0	0.0	
Rapids	8	210	4.6	0.31	955	36.51%	0	0.0	
Cascades	0	0			0	0.00%	0	0.0	
Step/Falls	1	5	5.1	0.10	23	0.88%	0	0.0	
Dry	0	0			0	0.00%	0	0.0	
Culverts	1	40	2.5	0.25	100	3.82%	0	0.0	

POOL SUMMARY		
	<u>Total</u>	<u># / Km</u>
All Pools:	8	14.7
Pools >=1m deep:	1	1.8
Complex pools (LWD pieces>=3):	1	1.8
Pool frequency (channel widths/pool):	8.2	
Residual pool depth (avg):	0.92	

STREAM SUMMARY

MILLER CREEK PRE-TX (L-193)

Number Units	Total Length (m)	Avg Width (m)	Avg Depth (m)	Total Area (m ²)	Substrate						Large Boulders (#>0.5m)
					Percent Wetted Area						
					S/O	Snd	Grvl	Cbl	Bldr	Bdrk	
29	597	4.4	0.40	2,616	11	23	22	22	18	5	

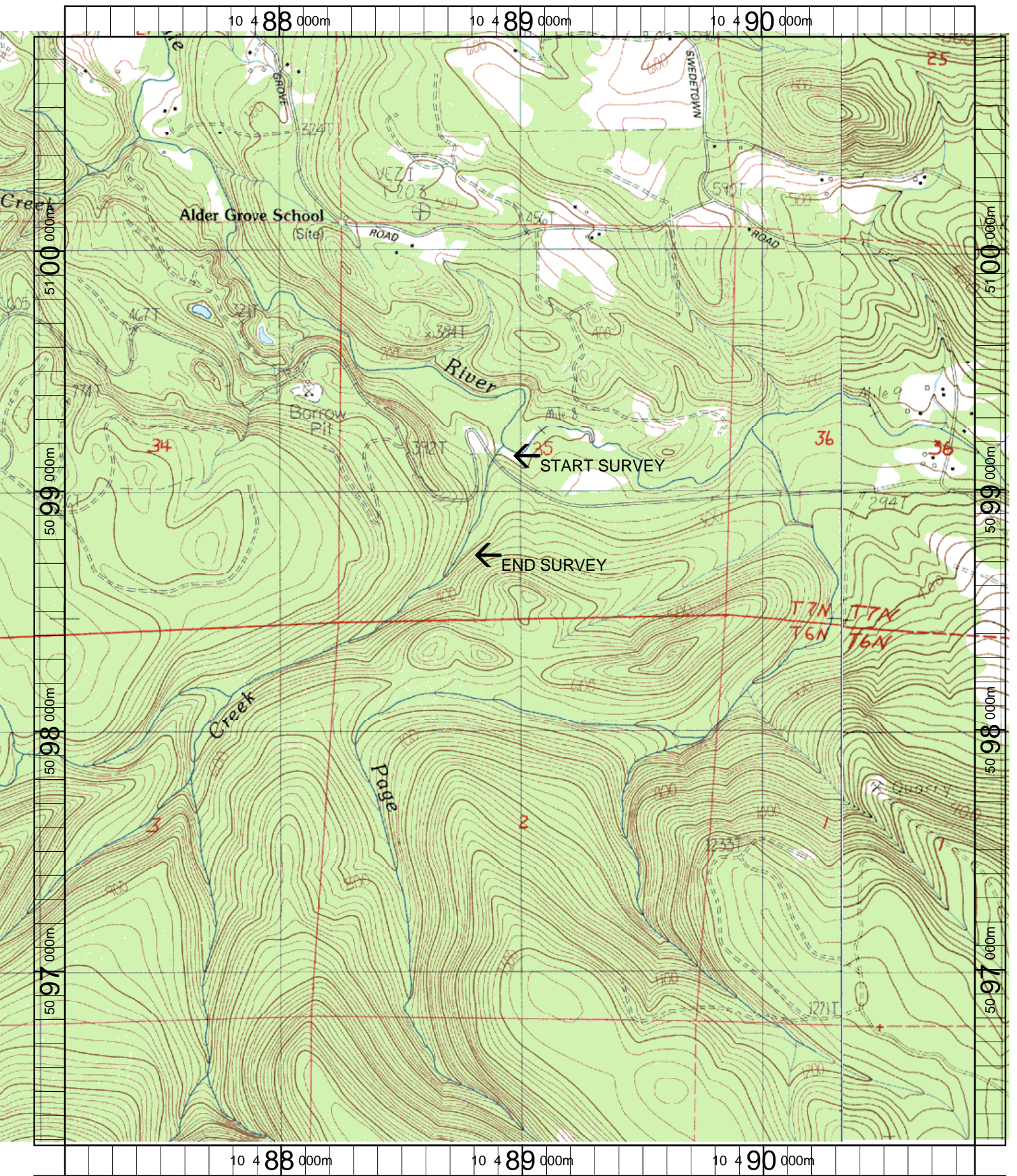
Habitat Group	Wetted Area	
	(m ²)	Percent
Dammed & BW Pools	72	2.74%
Scour Pools	226	8.63%
Glides	0	0.00%
Riffles	1,241	47.42%
Rapids	955	36.51%
Cascades	0	0.00%
Step/Falls	23	0.88%
Dry	0	0.00%
Culverts	100	3.82%

Comment Summary

Restoration Monitoring Sites 2003

MONITORING AREA: 7-L SITE ID: 193 MILLER CREEK PRE-TX (L-193)

UNIT#	TYPE	CHAN	DIST. (m)	COMMENTS	NOTE ESTIMATOR	NOTE NUMERATOR
1	RB	00	13.5		T=8C/0845	
2	PP	00	27.7		NO STEP @ CULVERT	
3	CC	00	67.7		2.5M DIAM	
4	RB	00	77.7	BV		
7	SP	00	150.3	BV		
8	RI	00	159.3	BV		
9	PP	00	164.4	BV		
10	SL	00	168.9		H=.7M	
11	RI	01	194.9	BV		
15	RB	00	282.5	SS/		
19	RI	00	360.5	LS/		
20	RI	00	383.5	BV		
21	RB	00	429	BV		
22	RB	01	452.1	BV		
23	BW	10	452.1		/BW	
24	BW	10	452.1		BW/	
25	BW	10	452.1		BW/	
29	RB	00	543.2	SS/		



Name: CLATSKANIE
 Date: 6/11/2003
 Scale: 1 inch equals 1666 feet

Location: 10 488989 E 5098585 N
 Caption: MILLER CREEK RESTORATION SITE - CLATSKANIE BASIN