

REACH

T04S-R04E-S11SE

REACH

Valley and Channel Summary

Valley Characteristics (Percent Reach Length)

<u>Narrow Valley Floor</u>		<u>Broad Valley Floor</u>	
Steep V-shape	0%	Constraining Terraces	100%
Moderate V-shape	0%	Multiple Terraces	0%
Open V-shape	0%	Wide Floodplain	0%
Valley Width Index	6.4	VWI Range:	5 - 7.3

Channel Morphology (Percent Reach Length)

<u>Constrained</u>		<u>Unconstrained</u>	
Hillslope	0%	Single Channel	0%
Bedrock	0%	Multiple Channel	0%
Terrace	0%	Braided Channel	0%
Alt. Terrace/Hill	100%		
Landuse	0%		

Channel Characteristics

<u>Type</u>	<u>Length (m)</u>	<u>Area (m2)</u>	<u>Dry Units</u>
Primary	536	7,392	0
Secondary	50	144	0

Channel Dimensions (m)

<u>Wetted</u>		<u>Active</u>		<u>Floodprone</u>	<u>First Terrace</u>
Width	11.9	Width	14.8	20.4	24.0
Depth	0.70	Height	0.9	1.7	2.7
		W:D ratio	17.2	Entrenchment	1.4

Stream Flow Type:	MF	Water temp (C):	6.9 - 6.9
Avg. Unit Gradient:	1.5%	Habitat Units/100m:	4.3

Riparian, Bank, and Wood Summary

	<u>Primary</u>	<u>Secondary</u>
Land Use:	LT	ST
Riparian Vegetation:	M30	S

Bank Condition and Shade

<u>Bank Status</u>	<u>Percent Reach Length</u>	<u>Shade (% of 180)</u>
Actively Eroding:		Reach avg:
Undercut Banks:		Range: -

Large Wood Debris

	<u>Total</u>	<u>Total / 100m</u>
All pieces (>=3m x 0.15m):	52	9.7
Volume (m ³):	166	30.9
Key pieces (>=10m x 0.60m):	10	1.9

OREGON DEPARTMENT OF FISH AND WILDLIFE

N FK EAGLE CREEK POST-TX (L-157)

HABITAT INVENTORY

Report Date: 5/6/03

Survey Date:

2/19/03

REACH		T04S-R04E-S11SE					REACH					
HABITAT DETAIL												
Habitat Type	Number	Total	Avg	Avg	Total	Large	Substrate					
	Units	Length	Width	Depth	Area	Boulders	Percent Wetted Area					
		(m)	(m)	(m)	(m ²)	(#>0.5m)	S/O	Snd	Grvl	Cbl	Bldr	Bdrk
CASCADE/BOULDERS	3	29	6.0	0.23	156	0	4	4	7	19	63	3
POOL-ISOLATED	1	29	3.5	2.00	103	0	89	11	0	0	0	0
POOL-LATERAL SCOUR	5	171	13.5	1.32	2,502	0	8	19	22	22	21	8
RAPID/BOULDERS	2	44	12.5	0.45	529	0	0	7	32	14	27	20
RIFFLE	9	225	13.7	0.47	3,137	0	2	6	20	32	29	9
RIFFLE W/ POCKETS	3	88	12.3	0.55	1,110	0	2	6	11	11	53	17
Total:	23	586	11.9	0.70	7,536	0	Avg 7	9	18	23	34	10

HABITAT SUMMARY								
Habitat Group	Number	Total	Avg	Avg	Wetted Area		Large Boulders	
	Units	Length	Width	Depth	(m ²)	Percent	Number	(# / 100m ²)
		(m)	(m)	(m)				
Dammed & BW Pools	1	29	3.5	2.00	103	1.36%	0	0.0
Scour Pools	5	171	13.5	1.32	2,502	33.20%	0	0.0
Glides	0	0			0	0.00%	0	0.0
Riffles	12	313	13.4	0.49	4,247	56.35%	0	0.0
Rapids	2	44	12.5	0.45	529	7.02%	0	0.0
Cascades	3	29	6.0	0.23	156	2.07%	0	0.0
Step/Falls	0	0			0	0.00%	0	0.0
Dry	0	0			0	0.00%	0	0.0
Culverts	0	0			0	0.00%	0	0.0

POOL SUMMARY		
	Total	# / Km
All Pools:	6	11.2
Pools >=1m deep:	6	11.2
Complex pools (LWD pieces>=3):	2	3.7
Pool frequency (channel widths/pool):	6.6	
Residual pool depth (avg):	0.93	

STREAM SUMMARY

N FK EAGLE CREEK POST-TX (L-157)

Number Units	Total Length (m)	Avg Width (m)	Avg Depth (m)	Total Area (m ²)	Substrate Percent Wetted Area						Large Boulders (>0.5m)
					S/O	Snd	Grvl	Cbl	Bldr	Bdrk	
23	586	11.9	0.70	7,536	7	9	18	23	34	10	

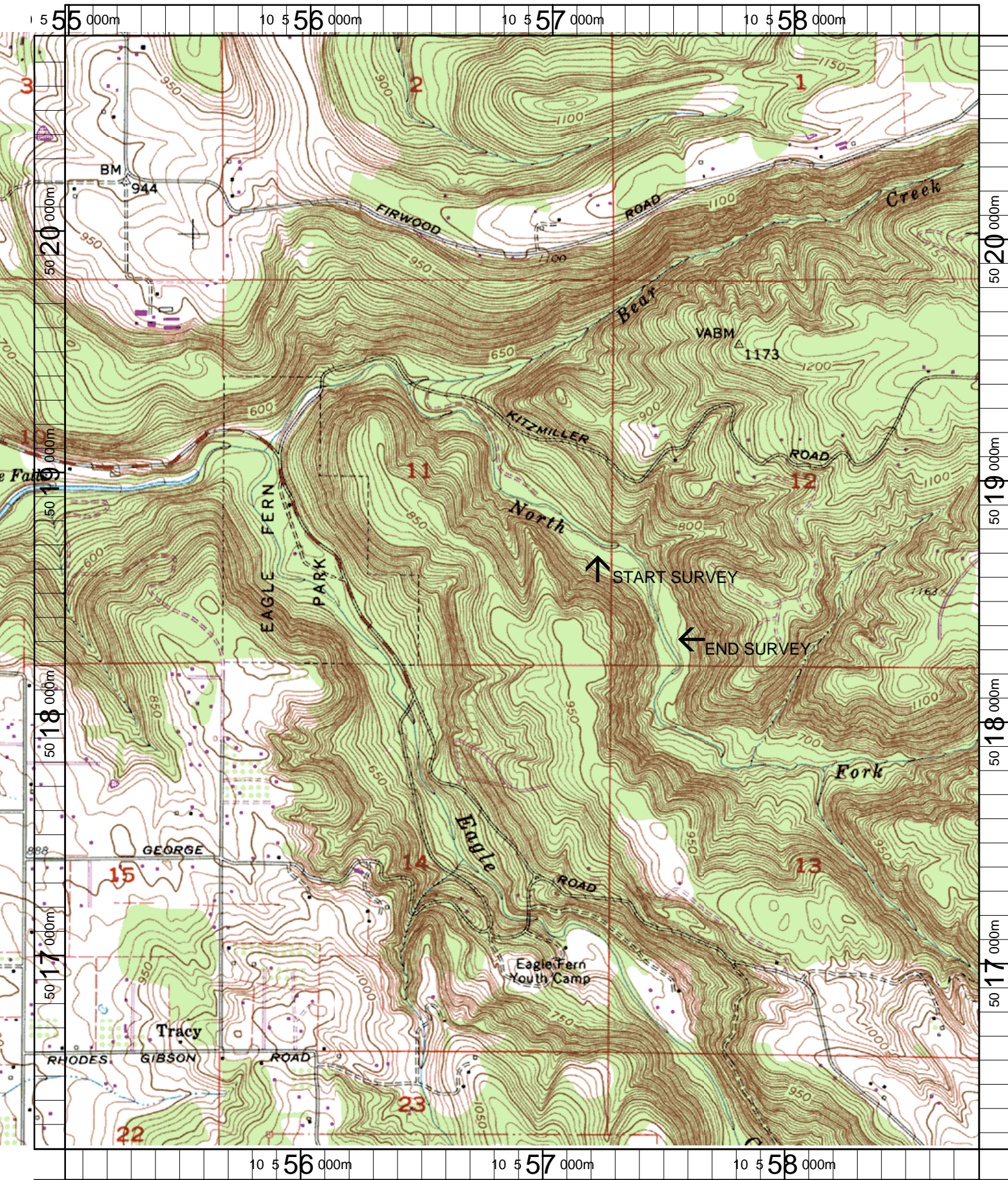
Habitat Group	Wetted Area	
	(m ²)	Percent
Dammed & BW Pools	103	1.36%
Scour Pools	2,502	33.20%
Glides	0	0.00%
Riffles	4,247	56.35%
Rapids	529	7.02%
Cascades	156	2.07%
Step/Falls	0	0.00%
Dry	0	0.00%
Culverts	0	0.00%

Comment Summary

Restoration Monitoring Sites 2003

MONITORING AREA: 7-L SITE ID: 157 N FK EAGLE CREEK POST-TX (L-157)

UNIT#	TYPE	CHAN	DIST. (m)	COMMENTS	NOTE ESTIMATOR	NOTE NUMERATOR
1	LP	00	21.3		T=6.8C/1100	
2	RI	01	50.3	HS		
3	IP	10	50.3	BV	GREEN ALGAE	
5	RI	01	75.1	TJ/		
6	CB	11	75.1		TRIB UNIT	
9	RP	01	163.3	TJ/		
10	CB	11	163.3		TRIB UNIT	
14	LP	00	254.3	DJ, HS		
15	RB	00	272.9		DAM INFLUENCED	
16	LP	00	325.5	BV	FISH CARCASS	
17	RI	00	350.5	/SS		
20	RI	00	458.6	BV		
22	RI	00	508.6	DJ	DJ ON SIDE	
23	RI	00	536.4	SS/	EOS, T=7C/1430	



Name: ESTACADA
 Date: 3/20/2003
 Scale: 1 inch equals 1666 feet

Location: 10 556890 E 5018524 N
 Caption: NORTH FORK EAGLE CREEK RESTORATION SITE -
 CLACKAMAS BASIN