

ODFW AQUATIC INVENTORY PROJECT
OREGON PLAN FOR SALMON & WATERSHEDS
STREAM RESTORATION HABITAT REPORT

STREAM: Papoose Creek (S-275)
BASIN: Euchre Creek
SURVEY TYPE: Post-Tx
DATE: March 22, 2006
SURVEY CREW: Scott Venables, Seth Ring
REPORT PREPARED BY: Paul Jacobsen
BASIN AREA: 1.0 km³
USGS MAPS: Brushy Bald Mountain
ECOREGION: Coast Range Coastal Uplands

GENERAL DESCRIPTION:

The Papoose Creek habitat survey extended 512 meters. The channel was constrained by terraces in a broad valley floor. The average valley width index was 6.4 (range: 4.0-10.0). Land use for the reach was second growth (15-30 cm dbh) and young (3-15 cm dbh) trees. The average unit gradient was 2.9 percent. Riffles (55%) and scour pools (25%) dominated stream habitat. Gravel (40%) and sand (27%) dominated stream substrate. Wood volume was very low at 8.5 m³/100m.

COMMENTS:

There were no potential barriers to upstream fish migration in the surveyed length.

REACH 1

T35S-R14W-S21SE

REACH 1

Valley and Channel Summary

Valley Characteristics (Percent Reach Length)

<u>Narrow Valley Floor</u>		<u>Broad Valley Floor</u>	
Steep V-shape	0%	Constraining Terraces	0%
Moderate V-shape	0%	Multiple Terraces	100%
Open V-shape	0%	Wide Floodplain	0%
Valley Width Index	6.4	VWI Range:	4 - 10

Channel Morphology (Percent Reach Length)

<u>Constrained</u>		<u>Unconstrained</u>	
Hillslope	0%	Single Channel	0%
Bedrock	0%	Multiple Channel	0%
Terrace	100%	Braided Channel	0%
Alt. Terrace/Hill	0%		
Landuse	0%		

Channel Characteristics

<u>Type</u>	<u>Length (m)</u>	<u>Area (m2)</u>	<u>Dry Units</u>
Primary Channel	512	779	0
Secondary Channel	0	0	0
Off-Channel Units	40	43	0

Channel Dimensions (m)

<u>Wetted</u>	<u>Active</u>	<u>Floodprone</u> n = 5	<u>First Terrace</u> n = 5
Width: 1.5	Width: 3.8	7.7 (3.4 - 14.6)	10.5 (4.7 - 17.1)
Depth: 0.25	Height: 0.6	1.2 (1.1 - 1.3)	2.3 (1.6 - 3.3)

W:D ratio: 6.4
 Stream Flow Type: MF
 Average Unit Gradient: 2.9%
 Water temperature (°C): 9.5 - 9.5

Entrenchment (ACW:FPW ratio): 2.1
 Habitat Units/100m (total channel length): 8.3
 Habitat Units/100m (primary channel length): 9.0

Riparian, Bank, and Wood Summary

	<u>Primary</u>	<u>Secondary</u>
Land Use:	ST	YT
Riparian Vegetation:	S	D15

Bank Condition and Shade

<u>Bank Status</u>	<u>Percent Reach Length</u>	<u>Shade (% of 180)</u>
Actively Eroding:		Reach avg:
Undercut Banks:		Range: -

Large Wood Debris

	<u>Total</u>	<u>Total / 100m primary channel</u>
All pieces (>=3m x 0.15m):	92	18.0
Volume (m ³):	44	8.5
Key pieces (>=12m x 0.60m):	0	0.0

OREGON DEPT OF FISH AND WILDLIFE

PAPOOSE CREEK POST-TX (5-SC, 275)

HABITAT INVENTORY

Report Date: 1/24/2007

Survey Date:

3/22/2006

REACH 1		T35S-R14W-S21SE					REACH 1					
HABITAT DETAIL												
Habitat Type	Number Units	Total Length (m)	Avg Width (m)	Avg Depth (m)	Total Area (m ²)	Large Boulders (#>0.5m)	Substrate Percent Wetted Area					
							S/O	Snd	Grvl	Cbl	Bldr	Bdrk
CASCADE/BOULDERS	8	85	1.3	0.19	119	0	6	31	49	7	5	2
POOL-BACKWATER	1	4	3.2	0.30	13	0	100	0	0	0	0	0
POOL-ISOLATED	1	12	1.5	0.40	19	0	100	0	0	0	0	0
POOL-LATERAL SCOUR	10	100	1.7	0.44	178	0	36	27	32	2	1	4
POOL-PLUNGE	3	12	1.9	0.55	24	0	16	28	51	2	0	4
RAPID/BOULDERS	2	17	0.9	0.18	14	0	13	40	40	3	5	0
RIFFLE	18	320	1.4	0.15	451	0	11	28	45	4	1	12
STEP/BEDROCK	1	1	0.9	0.15	0	0	0	0	0	0	0	100
STEP/LOG	2	2	1.8	0.08	3	0	10	40	50	0	0	0
Total:	46	552	1.5	0.25	823	0	Avg: 19	27	40	3	2	8

HABITAT SUMMARY									
Habitat Group	Number Units	Total Length (m)	Avg Width (m)	Avg Depth (m)	Wetted Area		Large Boulders		
					(m ²)	Percent	Number	(# / 100m ²)	
Dammed & BW Pools	2	17	2.4	0.35	32	3.86%	0	0.0	
Scour Pools	13	112	1.8	0.47	203	24.64%	0	0.0	
Glides	0	0			0	0.00%	0	0.0	
Riffles	18	320	1.4	0.15	451	54.84%	0	0.0	
Rapids	2	17	0.9	0.18	14	1.75%	0	0.0	
Cascades	8	85	1.3	0.19	119	14.52%	0	0.0	
Step/Falls	3	2	1.5	0.10	3	0.40%	0	0.0	
Dry	0	0			0	0.00%	0	0.0	
Culverts	0	0			0	0.00%	0	0.0	

POOL SUMMARY			
	Total of all Channel Lengths		Primary Channel Length
	<u>Total</u>	<u># / Km</u>	<u># / Km</u>
All Pools:	15	27.2	29.3
Pools >=1m deep:	0	0.0	0.0
Complex pools (LWD pieces>=3):	4	7.2	7.8
Pool frequency (channel widths/pool):	9.8		
Residual pool depth (avg):	0.34		

Comment Summary

Restoration Monitoring Sites 2006

MONITORING AREA: **5-SC** SITE ID: **275** **PAPOOSE CREEK**

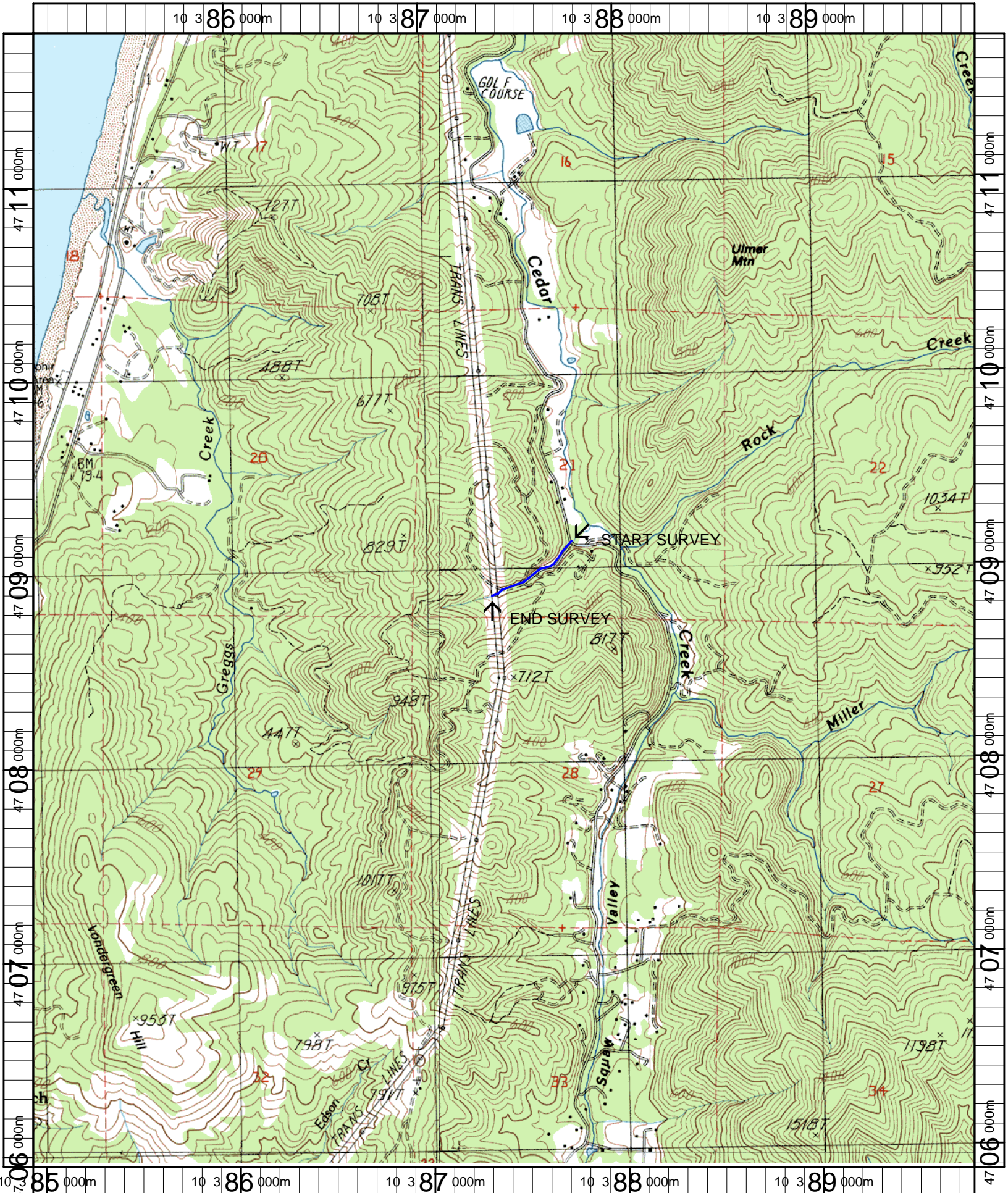
UNIT#	TYPE	CHAN	DIST. (m)	COMMENTS	NOTE ESTIMATOR	NOTE NUMERATOR
1	RI	00	21.9	SS/,/SS	CC 1.8HX1.8WX19.5L BDRK=METAL	
2	LP	00	24.1		T=9.5C @900, HARDPAN	
3	RI	00	35.1		D15-S,CT-CT,RR-ST	
5	SL	00	37.6		H=0.35M	
6	RI	00	46.1		HARDPAN	
7	PP	00	52.6	SS/, DJ	3" FISH, HARDPAN	
8	SR	00	53.1		H=0.55M, HARDPAN	
9	RI	00	60.9		HARDPAN	
10	LP	00	66.5		HARDPAN	
11	CB	00	79.4		HARDPAN	
12	CB	00	103.3	DJ	HARDPAN	
14	CB	00	119.7	/SS		
15	RI	00	134.8		RR-ST,S-D15,US-MT	
16	LP	00	142.8	DJ	HARDPAN	
18	RI	00	192.8		HARDPAN	
19	RI	00	212.4		HARDPAN	
21	LP	01	242.7	TJ/		
22	RB	11	242.7		ACW=0.70M, T=10.0C AT 1050	
24	RI	00	265.1		YT-ST,S-D15,CA-MT	
26	LP	00	290		1" FISH	
31	RI	01	366.1	/TJ		

Comment Summary

Restoration Monitoring Sites 2006

MONITORING AREA: **5-SC** SITE ID: **275** **PAPOOSE CREEK**

UNIT#	TYPE	CHAN	DIST. (m)	COMMENTS	NOTE ESTIMATOR	NOTE NUMERATOR
32	CB	11	366.1		ACW=0.50M, T=10.5C AT 1140	
35	SL	00	379.3		H=0.60M	
37	CB	00	401.1	SS/		
39	RI	01	434.3	TJ,/,SS,WL	RED-LEGGED FROG	
40	RI	11	434.3		ACW=2.20M, T=10.0C AT 1230	
41	CB	11	434.3		CA-CT,YT-ST,S-D30	
45	CB	00	495	DJ		
46	RI	00	511.5		CT-MT,YT-ST,S-D30	



Name: BRUSHY BALD MT (OR)
 Date: 2/15/2007
 Scale: 1 inch equals 2000 feet

Location: 10 0387399 E 4708839 N
 Caption: PAPOOSE CREEK RESTORATION SITE - EUCHRE CREEK BASIN