

**ODFW AQUATIC INVENTORY PROJECT**  
**OREGON PLAN FOR SALMON & WATERSHEDS**  
**STREAM RESTORATION HABITAT REPORT**

STREAM: Rogue River Tributary C (S-240)  
BASIN: Rogue River  
SURVEY TYPE: Pre-Tx  
DATE: February 24, 2004  
SURVEY CREW: Michael Scheu, Jeremiah Bernier  
REPORT PREPARED BY: Paul Jacobsen  
BASIN AREA: 0.5 km<sup>2</sup>  
USGS MAPS: Signal Buttes  
ECOREGION: Coast Range Sitka Spruce

**GENERAL DESCRIPTION:**

The Rogue River Tributary C habitat survey extended 478 meters. The channel was alternately constrained by hillslopes and terraces in a broad valley floor. The average valley width index was 12.9 (range: 2.0-20.0). Land use for the reach was young (3-15 cm dbh) and second growth (15-30 cm dbh) trees. The average unit gradient was 6.9 percent. Cascades (42%) and rapids (32%) dominated stream habitat. Cobble (35%) and gravel (33%) dominated stream substrate. Wood volume was low at 8.0 m<sup>3</sup>/100m.

**COMMENTS:**

There were no potential barriers to upstream fish migration in the surveyed length.

REACH 1

T36S-R14W-S11SW

REACH 1

**Valley and Channel Summary**

Valley Characteristics (Percent Reach Length)

<u>Narrow Valley Floor</u>		<u>Broad Valley Floor</u>	
Steep V-shape	0%	Constraining Terraces	100%
Moderate V-shape	0%	Multiple Terraces	0%
Open V-shape	0%	Wide Floodplain	0%
Valley Width Index	12.9	VWI Range:	2 - 20

Channel Morphology (Percent Reach Length)

<u>Constrained</u>		<u>Unconstrained</u>	
Hillslope	0%	Single Channel	0%
Bedrock	0%	Multiple Channel	0%
Terrace	0%	Braided Channel	0%
Alt. Terrace/Hill	100%		
Landuse	0%		

Channel Characteristics

<u>Type</u>	<u>Length (m)</u>	<u>Area (m2)</u>	<u>Dry Units</u>
Primary	478	1,165	0
Secondary	21	42	1

Channel Dimensions (m)

<u>Wetted</u>	<u>Active</u>	<u>Floodprone</u> n = 5	<u>First Terrace</u> n = 3
Width: 2.4	Width: 4.4	7.0 ( 4.7 - 10 )	10.1 ( 8.7 - 11 )
Depth: 0.28	Height: 0.4	0.8 ( 0.7 - 1 )	2.2 ( 1.2 - 3.3 )

W:D ratio: 11.0  
Stream Flow Type: MF  
Avg. Unit Gradient: 6.9%

Entrenchment (ACW:FPW ratio): 1.6  
Water temp (°C): 9.5 - 9.5  
Habitat Units/100m: 8.2

**Riparian, Bank, and Wood Summary**

	<u>Primary</u>	<u>Secondary</u>
Land Use:	YT	ST
Riparian Vegetation:	M15	S

Bank Condition and Shade

<u>Bank Status</u>	<u>Percent Reach Length</u>	<u>Shade (% of 180)</u>
Actively Eroding:		Reach avg:
Undercut Banks:		Range: -

Large Wood Debris

	<u>Total</u>	<u>Total / 100m</u>
All pieces (>=3m x 0.15m):	43	9.0
Volume (m <sup>3</sup> ):	38	8.0
Key pieces (>=10m x 0.60m):	2	0.4

OREGON DEPARTMENT OF FISH AND WILDLIFE

ROGUE RIVER TRIB C PRE-TX (S-240)

HABITAT INVENTORY

Report Date: 6/16/2004

Survey Date:

2/24/2004

REACH 1

T36S-R14W-S11SW

REACH 1

HABITAT DETAIL

Habitat Type	Number Units	Total Length (m)	Avg Width (m)	Avg Depth (m)	Total Area (m <sup>2</sup> )	Large Boulders (#>0.5m)	Substrate Percent Wetted Area					
							S/O	Snd	Grvl	Cbl	Bldr	Bdrk
CASCADE/BOULDERS	11	207	2.4	0.20	509	0	0	0	8	41	51	0
CULVERT CROSSING	1	28	1.6	0.15	44	0	0	0	50	50	0	0
DRY UNIT	1	11	3.5	0.00	37	0	0	20	20	10	50	0
POOL-LATERAL SCOUR	6	42	2.1	0.38	90	0	0	12	61	22	5	0
POOL-PLUNGE	10	41	2.7	0.50	115	0	0	15	53	20	12	0
RAPID/BOULDERS	9	162	2.4	0.17	391	0	0	0	27	47	26	0
STEP/COBBLE	2	9	2.4	0.20	20	0	0	0	5	60	35	0
STEP/STRUCTURE	1	0	1.6	0.10	1	0	0	0	50	50	0	0
<b>Total:</b>	<b>41</b>	<b>499</b>	<b>2.4</b>	<b>0.28</b>	<b>1,207</b>	<b>0</b>	<b>Avg: 0</b>	<b>6</b>	<b>33</b>	<b>35</b>	<b>26</b>	<b>0</b>

HABITAT SUMMARY

Habitat Group	Number Units	Total Length (m)	Avg Width (m)	Avg Depth (m)	Wetted Area		Large Boulders	
					(m <sup>2</sup> )	Percent	Number	(# / 100m <sup>2</sup> )
Dammed & BW Pools	0	0			0	0.00%	0	0.0
Scour Pools	16	83	2.5	0.46	206	17.03%	0	0.0
Glides	0	0			0	0.00%	0	0.0
Riffles	0	0			0	0.00%	0	0.0
Rapids	9	162	2.4	0.17	391	32.40%	0	0.0
Cascades	11	207	2.4	0.20	509	42.13%	0	0.0
Step/Falls	3	9	2.1	0.17	21	1.72%	0	0.0
Dry	1	11	3.5	0.00	37	3.04%	0	0.0
Culverts	1	28	1.6	0.15	44	3.67%	0	0.0

POOL SUMMARY

	Total	# / Km	
All Pools:	16	32.1	21
Pools >=1m deep:	1	2.0	
Complex pools (LWD pieces>=3):	0	0.0	
Pool frequency (channel widths/pool):	7.1		
Residual pool depth (avg):	0.27		

**STREAM SUMMARY**

**ROGUE RIVER TRIB C PRE-TX (S-240)**

Number Units	Total Length (m)	Avg Width (m)	Avg Depth (m)	Total Area (m <sup>2</sup> )	Substrate						Large Boulders (#>0.5m)
					Percent Wetted Area						
					S/O	Snd	Grvl	Cbl	Bldr	Bdrk	
41	499	2.4	0.28	1,207	0	6	33	35	26	0	

Habitat Group	Wetted Area	
	(m <sup>2</sup> )	Percent
Dammed & BW Pools	0	0.00%
Scour Pools	206	17.03%
Glides	0	0.00%
Riffles	0	0.00%
Rapids	391	32.40%
Cascades	509	42.13%
Step/Falls	21	1.72%
Dry	37	3.04%
Culverts	44	3.67%

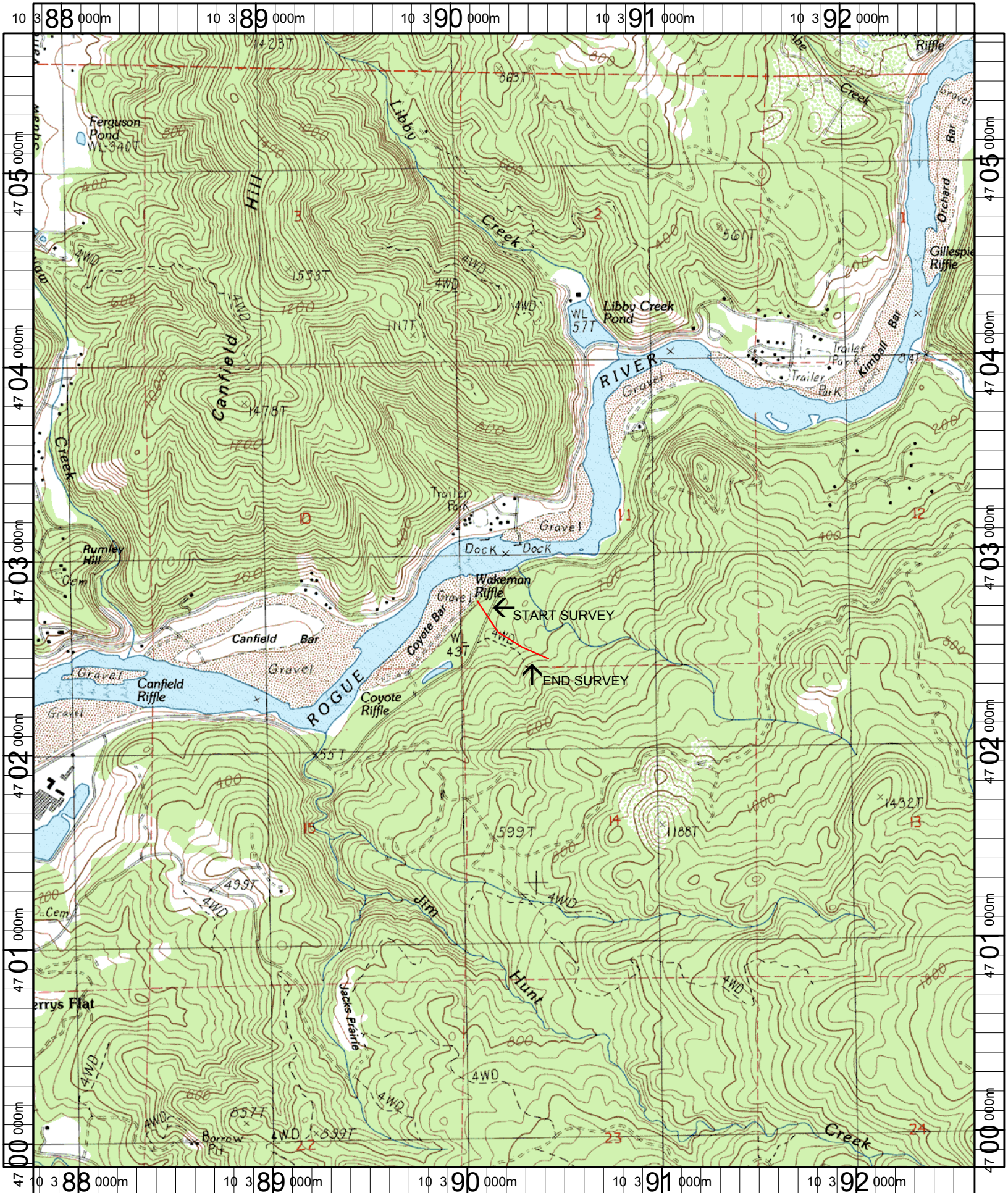
# Comment Summary

## Oregon Plan Monitoring Sites 2002

MONITORING AREA: 5-SC SITE ID: 240 ROGUE RIVER TRIB C PRE-TX (S-240)

UNIT#	TYPE	CHAN	DIST. (m)	COMMENTS	NOTE ESTIMATOR	NOTE NUMERATOR
12	SS	00	127.8		H=0.8M, CORRUGATED	
13	CC	00	155.5	CC	S. ROGUE RD	
18	RB	00	226.2	/LA		
23	LP	00	262.5	LA/		
25	PP	00	271.3	LI/		
26	CB	00	296.3	LI, LA/		
37	CB	00	424.1	LI/		
38	CB	00	449.7	LI/LI		
39	PP	00	452.7	LI/LI		





Name: SIGNAL BUTTES  
 Date: 8/5/2004  
 Scale: 1 inch equals 2000 feet

Location: 10 390231 E 4702764 N  
 Caption: ROGUE RIVER TRIBUTARY C RESTORATION SITE - ROGUE BASIN