

REACH

T20S-R06W-S30SW

REACH

**Valley and Channel Summary**

Valley Characteristics (Percent Reach Length)

<u>Narrow Valley Floor</u>		<u>Broad Valley Floor</u>	
Steep V-shape	0%	Constraining Terraces	100%
Moderate V-shape	0%	Multiple Terraces	0%
Open V-shape	0%	Wide Floodplain	0%
Valley Width Index	5.4	VWI Range:	3.5 - 6.5

Channel Morphology (Percent Reach Length)

<u>Constrained</u>		<u>Unconstrained</u>	
Hillslope	0%	Single Channel	0%
Bedrock	0%	Multiple Channel	0%
Terrace	0%	Braided Channel	0%
Alt. Terrace/Hill	100%		
Landuse	0%		

Channel Characteristics

<u>Type</u>	<u>Length (m)</u>	<u>Area (m2)</u>	<u>Dry Units</u>
Primary	512	1,456	0
Secondary	26	43	0

Channel Dimensions (m)

<u>Wetted</u>		<u>Active</u>		<u>Floodprone</u>	<u>First Terrace</u>
Width	2.8	Width	4.7	6.9	8.4
Depth	0.38	Height	0.4	0.8	1.1
		W:D ratio	11.2	Entrenchment	1.5

Stream Flow Type:	MF	Water temp (C):	5.5 - 5.5
Avg. Unit Gradient:	1.0%	Habitat Units/100m:	12.7

**Riparian, Bank, and Wood Summary**

	<u>Primary</u>	<u>Secondary</u>
Land Use:	YT	ST
Riparian Vegetation:	D15	S

Bank Condition and Shade

<u>Bank Status</u>	<u>Percent Reach Length</u>	<u>Shade (% of 180)</u>
Actively Eroding:		Reach avg:
Undercut Banks:		Range: -

Large Wood Debris

	<u>Total</u>	<u>Total / 100m</u>
All pieces (>=3m x 0.15m):	121	23.6
Volume (m <sup>3</sup> ):	303	59.1
Key pieces (>=10m x 0.60m):	36	7.0

OREGON DEPARTMENT OF FISH AND WILDLIFE

SALMONBERRY CREEK POST-TX (U-99)

HABITAT INVENTORY

Report Date: 5/6/03

Survey Date:

2/25/03

REACH		T20S-R06W-S30SW					REACH					
HABITAT DETAIL												
Habitat Type	Number Units	Total Length (m)	Avg Width (m)	Avg Depth (m)	Total Area (m <sup>2</sup> )	Large Boulders (#>0.5m)	Substrate Percent Wetted Area					
							S/O	Snd	Grvl	Cbl	Bldr	Bdrk
POOL-BACKWATER	4	16	2.1	0.38	35	0	20	60	17	1	1	0
POOL-LATERAL SCOUR	33	316	3.0	0.58	959	0	11	48	40	1	0	0
RIFFLE	18	175	2.3	0.15	408	0	3	15	82	0	0	0
STEP/COBBLE	9	30	3.0	0.11	94	0	2	21	74	3	0	0
STEP/LOG	1	1	2.8	0.20	2	0	11	89	0	0	0	0
<b>Total:</b>	<b>65</b>	<b>538</b>	<b>2.8</b>	<b>0.38</b>	<b>1,499</b>	<b>0</b>	<b>Avg 8</b>	<b>37</b>	<b>54</b>	<b>1</b>	<b>0</b>	<b>0</b>

HABITAT SUMMARY									
Habitat Group	Number Units	Total Length (m)	Avg Width (m)	Avg Depth (m)	Wetted Area		Large Boulders		
					(m <sup>2</sup> )	Percent	Number	(# / 100m <sup>2</sup> )	
Dammed & BW Pools	4	16	2.1	0.38	35	2.32%	0	0.0	
Scour Pools	33	316	3.0	0.58	959	64.02%	0	0.0	
Glides	0	0			0	0.00%	0	0.0	
Riffles	18	175	2.3	0.15	408	27.23%	0	0.0	
Rapids	0	0			0	0.00%	0	0.0	
Cascades	0	0			0	0.00%	0	0.0	
Step/Falls	10	31	3.0	0.12	96	6.43%	0	0.0	
Dry	0	0			0	0.00%	0	0.0	
Culverts	0	0			0	0.00%	0	0.0	

POOL SUMMARY		
	Total	# / Km
All Pools:	37	72.3
Pools >=1m deep:	2	3.9
Complex pools (LWD pieces>=3):	14	27.4
Pool frequency (channel widths/pool):	3.1	
Residual pool depth (avg):	0.45	

**STREAM SUMMARY**

**SALMONBERRY CREEK POST-TX (U-99)**

Number Units	Total Length (m)	Avg Width (m)	Avg Depth (m)	Total Area (m <sup>2</sup> )	Substrate Percent Wetted Area						Large Boulders (>0.5m)
					S/O	Snd	Grvl	Cbl	Bldr	Bdrk	
65	538	2.8	0.38	1,499	8	37	54	1	0	0	

Habitat Group	Wetted Area	
	(m <sup>2</sup> )	Percent
Dammed & BW Pools	35	2.32%
Scour Pools	959	64.02%
Glides	0	0.00%
Riffles	408	27.23%
Rapids	0	0.00%
Cascades	0	0.00%
Step/Falls	96	6.43%
Dry	0	0.00%
Culverts	0	0.00%

# Comment Summary

## Restoration Monitoring Sites 2003

**MONITORING AREA: 4-UMP SITE ID: 99 SALMONBERRY CREEK POST-TX (U-99)**

<u>UNIT#</u>	<u>TYPE</u>	<u>CHAN</u>	<u>DIST. (m)</u>	<u>COMMENTS</u>	<u>NOTE ESTIMATOR</u>	<u>NOTE NUMERATOR</u>
1	LP	00	13.7			PINK/BLUE FLAG, T=5.5C,
2	LP	00	22.5	HS		
3	SL	00	23.3	HS		H=.4M, ORANGE/YELLOW
7	RI	00	50.2	HS		CARCASS
8	LP	00	56.5	HS		PINK/YELLOW/ORANGE F
9	LP	00	61.2	HS		
10	RI	01	76.9			ORANGE FLAGS
12	LP	00	83.9	HS		
13	RI	00	94.9			CARCASS
14	LP	00	108.2			"STRUC SITE #4"-PINK FL
16	LP	00	118.1	HS		ORANGE/YELLOW FLAGS
17	SC	00	120.1	HS		
18	LP	00	137.3			YELLOW/WHITE FLAG
19	RI	01	151.8	TJ/		T=5.5C
20	RI	11	151.8			T=6C, ACW=1.0M
23	RI	00	187			PINK/YELLOW/ORANGE F
24	LP	00	194.8	HS		WECO MARKER, YELLOW
25	LP	00	203.4			CARCASS
27	LP	00	216.7	HS		"WEYCO PT #2" SIGN
29	LP	00	234.7	HS		"WEYCO PT #3" SIGN
30	RI	00	245.4			ORANGE/YELLOW FLAGS

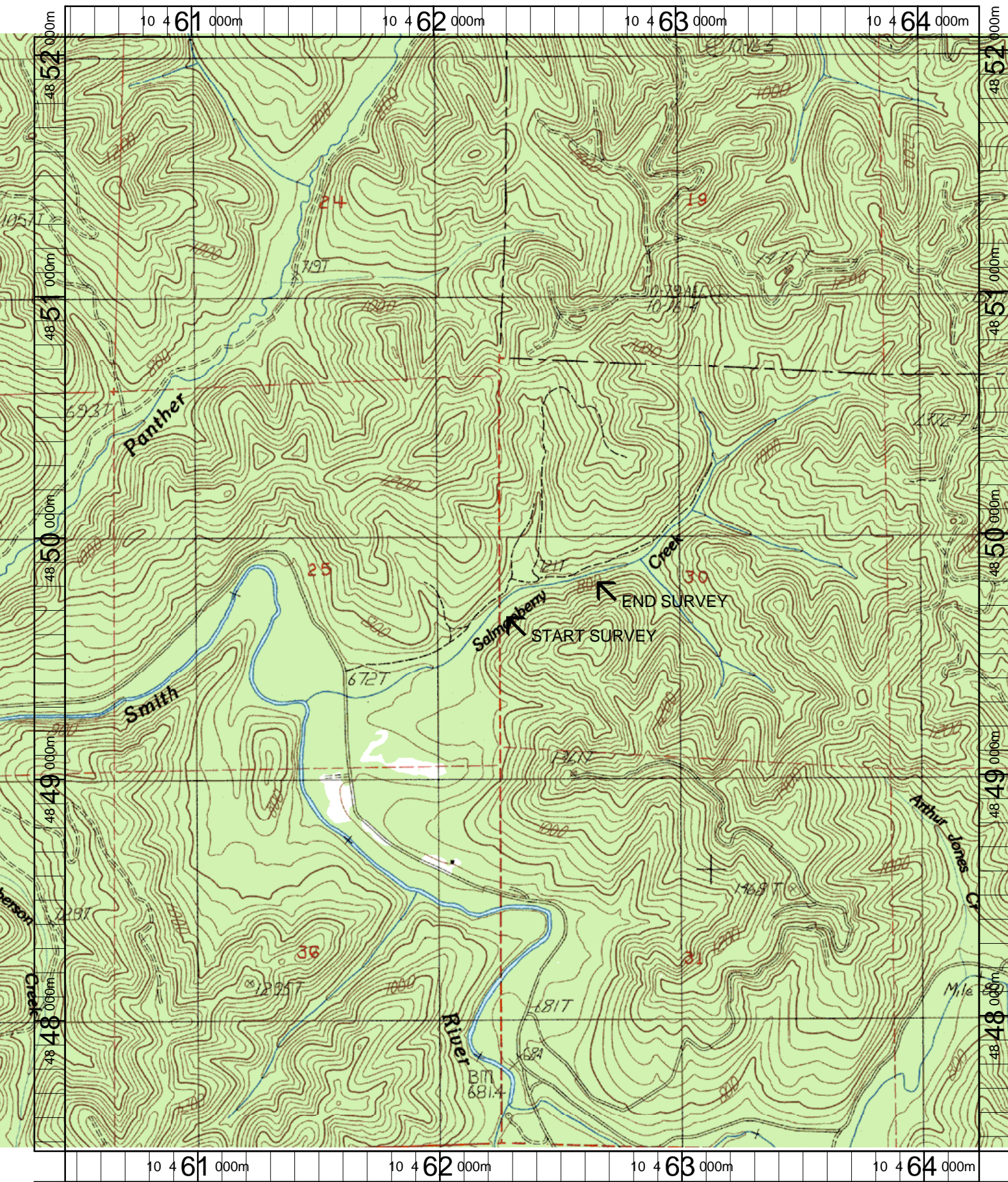
# Comment Summary

## Restoration Monitoring Sites 2003

**MONITORING AREA: 4-UMP SITE ID: 99 SALMONBERRY CREEK POST-TX (U-99)**

<u>UNIT#</u>	<u>TYPE</u>	<u>CHAN</u>	<u>DIST. (m)</u>	<u>COMMENTS</u>	<u>NOTE ESTIMATOR</u>	<u>NOTE NUMERATOR</u>
31	LP	00	256.7	SS/, HS	"STRUCT #8", SNRKL PO	
32	RI	01	263.7	HS	ORANGE/YELLOW FLAGS	
34	LP	00	271.4		SNORKEL POOL #6	
37	LP	00	299.4	SS/, HS	STRUCTURE #9, WEYCO	
42	RI	00	334.8		BLUE/WHITE FLAG	
44	RI	00	352.6		ORANGE/YELLOW FLAG	
46	RI	01	369.6		WEYCO #6 SIGN	
48	LP	00	376.7	HS		
49	RI	00	383.6	HS		
50	LP	00	396	HS	WEYCO #7 SIGN	
51	RI	00	400		CARCASS	
53	RI	00	410.8		YELLOW/ORANGE- BLUE/	
55	SC	00	424.3		ORANGE/YELLOW	
56	LP	00	436.3		SNORKEL SITE #12-PINK/	
57	LP	00	448	HS	WEYCO #8 SIGN	
58	LP	00	458		ORANGE/YELLOW	
62	LP	00	491.3	HS	PINK FLAG	
65	RI	00	511.7		ORANGE/YELLOW	





Name: BEAVER CREEK  
Date: 3/21/2003  
Scale: 1 inch equals 1666 feet

Location: 10 462348 E 4849761 N  
Caption: SALMONBERRY CREEK RESTORATION SITE - SMITH BASIN