

REACH 1

T22S-R7W-S24NW

REACH 1

Valley and Channel Summary

Valley Characteristics (Percent Reach Length)

<u>Narrow Valley Floor</u>		<u>Broad Valley Floor</u>	
Steep V-shape	0	Constraining Terraces	100
Moderate V-shape	0	Multiple Terraces	0
Open V-shape	0	Wide Floodplain	0

Valley Width Index avg: 5.0 range: 5.0-5.0

Channel Morphology (Percent Reach Length)

<u>Constrained</u>		<u>Unconstrained</u>	
Hillslope	0	Single Channel	0
Bedrock	0	Multiple Channel	0
Terrace	0	Braided Channel	0
Alt. Terrace/Hill	100		
Landuse	0		

Channel Characteristics

<u>Type</u>	<u>Length(m)</u>	<u>Area (m2)</u>	<u>Dry Units</u>
Primary	527	5,097	0
Secondary	22	27	0

Channel Dimensions (m)

	<u>Wetted</u>		<u>Active</u>		<u>Floodprone</u>		<u>First Terrace</u>
Width	8.2	Width	11.2		15.4		19.2
Depth	0.47	Height	0.7		1.3		2.4
		W:D ratio	16.6	Entrenchment	1.4		

Stream Flow Type: MF Water Temp: 9.0-9.0°C  
 Avg. Unit Gradient: 0.4% Habitat Units/100m: 3.1

Riparian, Bank, and Wood Summary

	<u>Primary</u>	<u>Secondary</u>
Land Use:	ST	YT
Riparian Vegetation:	M30	S

Bank Condition and Shade

<u>Bank Status</u>	<u>Percent Reach Length</u>	<u>Shade (% of 180)</u>
Actively Eroding	0%	Reach avg: 0%
Undercut Banks	0%	Range: 0- 0

Large Woody Debris

	<u>Total</u>	<u>Total/100m</u>
All pieces (≥3m x 0.15m)	97	18.4
Volume (m <sup>3</sup> )	244	46.2
Key pieces (≥10m x 0.6m)	17	3.2

REACH 1

T22S-R7W-S24NW

REACH 1

HABITAT DETAIL

Habitat Type	Number Units	Total Length (m)	Avg Width (m)	Avg Depth (m)	Total Area (m <sup>2</sup> )	Large Boulders (#>0.5m)	Substrate Percent Wetted Area					
							S/O	Snd	Grvl	Cbbl	Bldr	Bdrk
CASCADE/BOULDERS	1	14	1.1	0.15	16	0	10	20	40	10	15	5
GLIDE	1	48	8.2	0.40	394	0	0	25	10	0	5	60
POOL-BACKWATER	2	8	1.5	0.25	11	0	3	15	10	0	3	70
POOL-LATERAL SCOUR	5	143	9.5	0.80	1,405	0	3	28	13	2	1	53
RIFFLE	7	288	9.7	0.38	2,746	0	1	17	11	5	2	63
RIFFLE W/ POCKETS	1	49	11.3	0.35	551	0	17	17	17	0	0	50
<b>Total:</b>	<b>17</b>	<b>549</b>	<b>8.2</b>	<b>0.47</b>	<b>5,124</b>	<b>0</b>	<b>Avg: 3</b>	<b>21</b>	<b>14</b>	<b>3</b>	<b>3</b>	<b>57</b>

HABITAT SUMMARY

Habitat Group	No. Units	Total Length (m)	Avg Width (m)	Avg Depth (m)	Wetted Area (m <sup>2</sup> )	Percent	Large Boulders Number	Boulders #/100m <sup>2</sup>
Dammed & BW Pools	2	8	1.5	0.25	11	0.21	0	0.0
Scour Pools	5	143	9.5	0.80	1,405	27.43	0	0.0
Glides	1	48	8.2	0.40	394	7.68	0	0.0
Riffles	8	337	9.9	0.38	3,298	64.37	0	0.0
Rapids	0	0	-	-	0	0.00	0	0.0
Cascades	1	14	1.1	0.15	16	0.31	0	0.0
Step/Falls	0	0	-	-	0	0.00	0	0.0
Dry	0	0	-	-	0	0.00	0	0.0

POOL SUMMARY

All Pools	<u>Total</u>	<u>#/Km</u>
	7	12.7
Pools ≥1m deep:	1	1.8
Complex pools (LWD pieces≥3):	5	9.1
Pool Frequency (channel widths/pool):	7.0	
Residual pool depth (avg)	0.44m	

STREAM SUMMARY

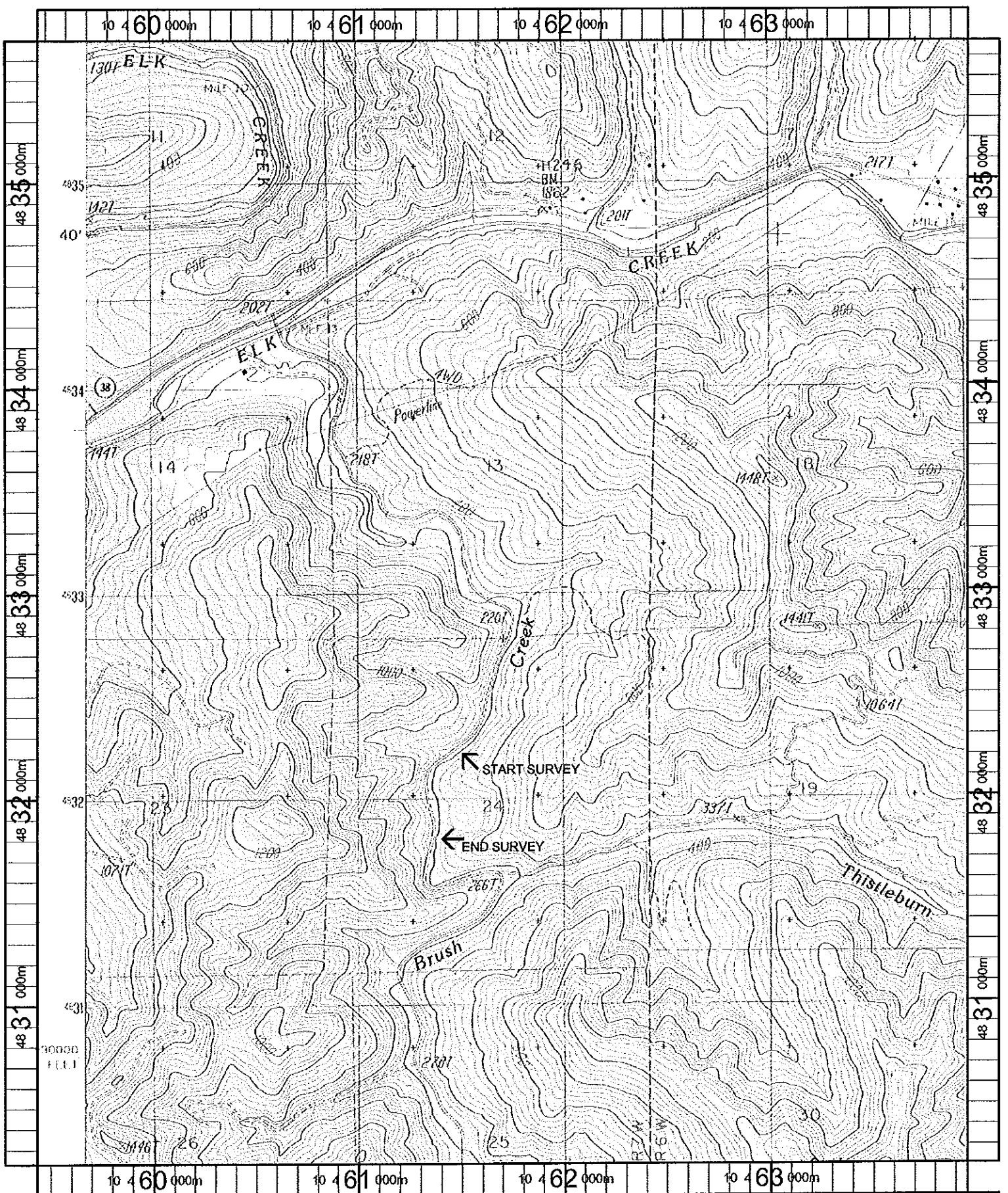
BRUSH CREEK (POST-TX)

Number Units	Total Length (m)	Avg Width (m)	Avg Depth (m)	Total Area (m <sup>2</sup> )	Substrate Percent Wetted Area					Total Large Boulder	
					S/O	Sand	Grvl	Cbbl	Bldr		Bdrk
17	549	8.2	0.47	5,124	3	21	14	3	3	57	0

Wetted Area

Habitat Group	(m <sup>2</sup> )	Percent
Scour Pool	1,405	27.4
Backwater Pools	11	0.2
Glide	394	7.7
Riffle	3,298	64.4
Rapid	0	0.0
Cascade	16	0.3
Step	0	0.0
Dry	0	0.0

---



Name: PUTNAM VALLEY  
 Date: 10/16/100  
 Scale: 1 inch equals 2000 feet

Location: 10 461608 E 4832937 N  
 Caption: BRUSH CREEK RESTORATION SITE - UMPQUA BASIN