

REACH 1

T23S-R7W-S11SE

REACH 1

Valley and Channel Summary

Valley Characteristics (Percent Reach Length)

<u>Narrow Valley Floor</u>		<u>Broad Valley Floor</u>	
Steep V-shape	0	Constraining Terraces	100
Moderate V-shape	0	Multiple Terraces	0
Open V-shape	0	Wide Floodplain	0

Valley Width Index avg: 7.0 range: 6.0-8.0

Channel Morphology (Percent Reach Length)

<u>Constrained</u>		<u>Unconstrained</u>	
Hillslope	0	Single Channel	0
Bedrock	0	Multiple Channel	0
Terrace	0	Braided Channel	0
Alt. Terrace/Hill	100		
Landuse	0		

Channel Characteristics

<u>Type</u>	<u>Length(m)</u>	<u>Area (m2)</u>	<u>Dry Units</u>
Primary	512	2,344	0
Secondary	27	93	0

Channel Dimensions (m)

<u>Wetted</u>		<u>Active</u>	<u>Floodprone</u>	<u>First Terrace</u>
Width	4.6	6.7	8.2	11.2
Depth	0.42	0.4	0.8	1.7
		W:D ratio 16.9	Entrenchment 1.2	

Stream Flow Type: MF Water Temp: 0.0-0.0°C
 Avg. Unit Gradient: 2.5% Habitat Units/100m: 6.5

Riparian, Bank, and Wood Summary

	<u>Primary</u>	<u>Secondary</u>
Land Use:	LT	
Riparian Vegetation:	D30	M15

Bank Condition and Shade

<u>Bank Status</u>	<u>Percent Reach Length</u>	<u>Shade (% of 180)</u>
Actively Eroding	0%	Reach avg: 0%
Undercut Banks	0%	Range: 0- 0

Large Woody Debris

	<u>Total</u>	<u>Total/100m</u>
All pieces (≥3m x 0.15m)	67	13.1
Volume (m ³)	101	19.7
Key pieces (≥10m x 0.6m)	4	0.8

REACH 1 T23S-R7W-S11SE REACH 1

HABITAT DETAIL

Habitat Type	Number Units	Total Length (m)	Avg Width (m)	Avg Depth (m)	Total Area (m ²)	Large Boulders (#>0.5m)	Substrate Percent Wetted Area					
							S/O	Snd	Grvl	Cbbl	Bldr	Bdrk
CASCADE/BEDROCK	1	9	5.7	0.15	49	0	0	0	0	0	0	100
CULVERT CROSSING	1	12	1.6	0.02	19	0	20	80	0	0	0	0
POOL-BACKWATER	1	5	2.8	0.40	14	0	10	20	0	5	5	60
POOL-LATERAL SCOUR	13	184	4.3	0.67	816	0	6	20	31	16	4	22
POOL-PLUNGE	2	14	6.7	1.03	88	0	5	15	30	10	0	40
RAPID/BEDROCK	3	41	5.6	0.17	212	0	2	7	8	2	0	82
RAPID/BOULDERS	8	173	4.9	0.23	837	0	6	15	19	29	15	16
RIFFLE	4	98	3.9	0.25	380	0	4	9	45	39	3	1
STEP/BEDROCK	1	2	7.5	0.04	17	0	0	0	0	0	0	100
STEP/BOULDERS	1	1	3.8	0.15	5	0	0	0	0	0	10	90
Total:	35	539	4.6	0.42	2,437	0	Avg: 5	16	24	18	6	31

HABITAT SUMMARY

Habitat Group	No. Units	Total Length (m)	Avg Width (m)	Avg Depth (m)	Wetted Area (m ²)	Percent	Large Boulders Number	Boulders #/100m ²
Dammed & BW Pools	1	5	2.8	0.40	14	0.57	0	0.0
Scour Pools	15	198	4.7	0.72	904	37.10	0	0.0
Glides	0	0	-	-	0	0.00	0	0.0
Riffles	4	98	3.9	0.25	380	15.61	0	0.0
Rapids	11	214	5.1	0.21	1,049	43.05	0	0.0
Cascades	1	9	5.7	0.15	49	2.01	0	0.0
Step/Falls	2	3	5.7	0.10	21	0.87	0	0.0
Dry	0	0	-	-	0	0.00	0	0.0

POOL SUMMARY

	Total	#/Km
All Pools	16	29.7
Pools ≥1m deep:	1	1.9
Complex pools (LWD pieces ≥3):	7	13.0
Pool Frequency (channel widths/pool):	5.0	
Residual pool depth (avg)	0.47m	

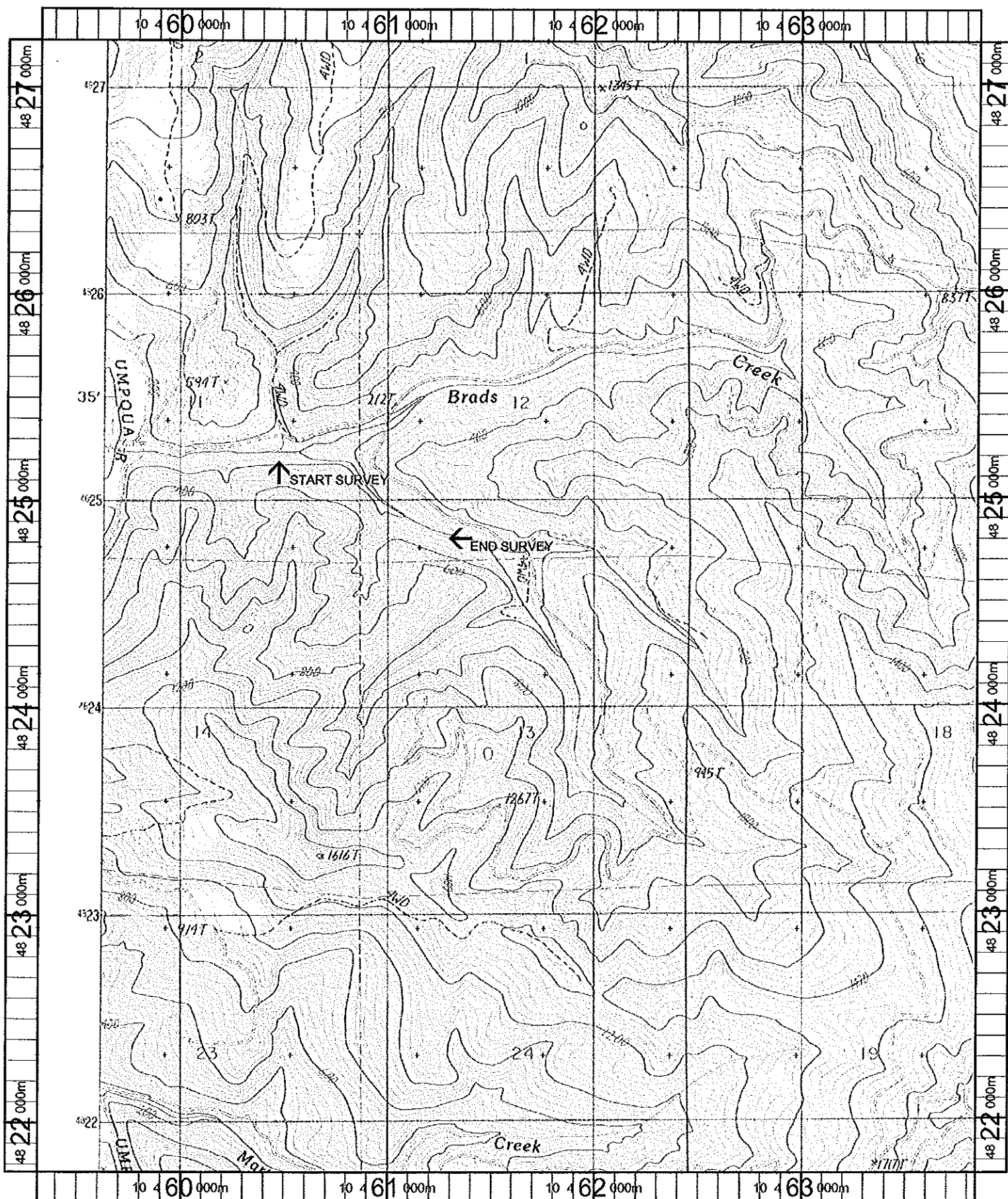
STREAM SUMMARY

BRADS CREEK TRIB (PRE-TX)

Number Units	Total Length (m)	Avg Width (m)	Avg Depth (m)	Total Area (m ²)	Substrate Percent Wetted Area					Total Large Boulder	
					S/O	Sand	Grvl	Cbbl	Bldr		Bdrk
35	539	4.6	0.42	2,437	5	16	24	18	6	31	0

Wetted Area

Habitat Group	(m ²)	Percent
Scour Pool	904	37.1
Backwater Pools	14	0.6
Glide	0	0.0
Riffle	380	15.6
Rapid	1,049	43.1
Cascade	49	2.0
Step	21	0.9
Dry	0	0.0



Name: YELLOW BUTTE
 Date: 10/13/100
 Scale: 1 inch equals 2000 feet

Location: 10 461488 E 4824467 N
 Caption: BRADS CREEK RESTORATION SITE
Umpqua Basin