

**ODFW AQUATIC INVENTORY PROJECT**  
**OREGON PLAN FOR SALMON & WATERSHEDS**  
**STREAM RESTORATION HABITAT REPORT**

STREAM: House Creek (U-268)  
BASIN: Umpqua River  
SURVEY TYPE: Pre-Tx  
DATE: March 17, 2005  
SURVEY CREW: Jennifer Schmitt, Neil Jensen  
REPORT PREPARED BY: Paul Jacobsen  
BASIN AREA: 4.2 km<sup>2</sup>  
USGS MAPS: Elkton  
ECOREGION: Coast Range Sedimentary

**GENERAL DESCRIPTION:**

The House Creek habitat survey extended 1,405 meters. The channel was alternately constrained by hillslopes and terraces in a broad valley floor. The average valley width index was 7.6 (range: 1.2-30.0). Land use for the reach was second growth (15-30 cm dbh) and young (3-15 cm dbh) trees. The average unit gradient was 2.9 percent. Scour pools (41%) and riffles (21%) dominated stream habitat. Gravel (48%) and sand (28%) dominated stream substrate. Wood volume was low at 13.8 m<sup>3</sup>/100m.

**COMMENTS:**

There were no potential barriers to upstream fish migration in the surveyed length.

REACH 1

T22S-R08W-S02NW

REACH 1

**Valley and Channel Summary**

Valley Characteristics (Percent Reach Length)

<u>Narrow Valley Floor</u>		<u>Broad Valley Floor</u>	
Steep V-shape	0%	Constraining Terraces	100%
Moderate V-shape	0%	Multiple Terraces	0%
Open V-shape	0%	Wide Floodplain	0%
Valley Width Index	7.6	VWI Range:	1.2 - 30

Channel Morphology (Percent Reach Length)

<u>Constrained</u>		<u>Unconstrained</u>	
Hillslope	0%	Single Channel	0%
Bedrock	0%	Multiple Channel	0%
Terrace	0%	Braided Channel	0%
Alt. Terrace/Hill	100%		
Landuse	0%		

Channel Characteristics

<u>Type</u>	<u>Length (m)</u>	<u>Area (m2)</u>	<u>Dry Units</u>
Primary Channel	1,405	3,692	0
Secondary Channel	0	0	0
Off-Channel Units	7	11	0

Channel Dimensions (m)

<u>Wetted</u>	<u>Active</u>	<u>Floodprone</u> n = 7	<u>First Terrace</u> n = 5
Width: 2.7	Width: 4.6	7.7 ( 5.2 - 13.6 )	9.7 ( 6.7 - 16 )
Depth: 0.31	Height: 0.4	0.8 ( 0.78 - 0.84 )	1.1 ( 1 - 1.3 )

W:D ratio: 11.5

Entrenchment (ACW:FPW ratio): 1.7

Stream Flow Type: LF

Habitat Units/100m (total channel length): 8.5

Average Unit Gradient: 2.9%

Habitat Units/100m (primary channel length): 8.5

Water temperature (°C): 8.0 - 8.0

**Riparian, Bank, and Wood Summary**

	<u>Primary</u>	<u>Secondary</u>
Land Use:	ST	YT
Riparian Vegetation:	D30	S

Bank Condition and Shade

<u>Bank Status</u>	<u>Percent Reach Length</u>	<u>Shade (% of 180)</u>
Actively Eroding:		Reach avg:
Undercut Banks:		Range: -

Large Wood Debris

	<u>Total</u>	<u>Total / 100m primary channel</u>
All pieces (>=3m x 0.15m):	180	12.8
Volume (m <sup>3</sup> ):	193	13.8
Key pieces (>=12m x 0.60m):	2	0.1

OREGON DEPT OF FISH AND WILDLIFE

HOUSE CREEK PRE-TX (4-UJP, 268)

HABITAT INVENTORY

Report Date: 11/29/2005

Survey Date:

3/17/2005

REACH 1

T22S-R08W-S02NW

REACH 1

HABITAT DETAIL

Habitat Type	Number Units	Total Length (m)	Avg Width (m)	Avg Depth (m)	Total Area (m <sup>2</sup> )	Large Boulders (#>0.5m)	Substrate Percent Wetted Area					
							S/O	Snd	Grvl	Cbl	Bldr	Bdrk
CASCADE/BEDROCK	1	12	2.4	0.20	29	0	16	26	21	11	5	21
CASCADE/BOULDERS	5	109	3.2	0.23	347	0	8	22	21	22	21	6
CULVERT CROSSING	1	15	2.3	0.25	33	0	10	14	14	0	0	62
GLIDE	5	71	2.2	0.17	156	0	9	28	48	2	1	12
POOL-BACKWATER	3	7	1.6	0.32	11	0	21	45	19	10	3	2
POOL-LATERAL SCOUR	43	420	3.4	0.56	1,388	0	18	45	29	2	2	4
POOL-PLUNGE	5	24	3.5	0.68	87	0	20	51	11	3	13	1
POOL-STRAIGHT SCOUR	1	7	4.1	0.55	30	0	15	35	20	0	15	15
RAPID/BEDROCK	2	42	2.0	0.08	86	0	4	10	10	0	3	74
RAPID/BOULDERS	13	251	2.3	0.12	560	0	5	15	62	9	7	3
RIFFLE	21	344	2.2	0.13	730	0	6	14	75	4	1	0
RIFFLE W/ POCKETS	2	30	1.8	0.18	54	0	7	17	76	0	0	0
STEP/BOULDERS	1	4	1.5	0.10	6	0	0	5	53	16	26	0
STEP/COBBLE	16	77	2.3	0.09	186	0	3	8	87	1	0	0
STEP/LOG	1	0	0.3	0.05	0	0	15	80	5	0	0	0
<b>Total:</b>	120	1,412	2.7	0.31	3,703	0	<b>Avg:</b> 11	28	48	4	4	5

HABITAT SUMMARY

Habitat Group	Number Units	Total Length (m)	Avg Width (m)	Avg Depth (m)	Wetted Area		Large Boulders	
					(m <sup>2</sup> )	Percent	Number	(# / 100m <sup>2</sup> )
Dammed & BW Pools	3	7	1.6	0.32	11	0.29%	0	0.0
Scour Pools	49	450	3.4	0.57	1,505	40.64%	0	0.0
Glides	5	71	2.2	0.17	156	4.21%	0	0.0
Riffles	23	374	2.1	0.14	784	21.17%	0	0.0
Rapids	15	293	2.2	0.11	646	17.44%	0	0.0
Cascades	6	121	3.1	0.23	376	10.15%	0	0.0
Step/Falls	18	82	2.2	0.09	192	5.20%	0	0.0
Dry	0	0			0	0.00%	0	0.0
Culverts	1	15	2.3	0.25	33	0.90%	0	0.0

**OREGON DEPT OF FISH AND WILDLIFE****HOUSE CREEK PRE-TX (4-UJP, 268)****HABITAT INVENTORY**

Report Date: 11/29/2005

Survey Date:

3/17/2005

**REACH 1****T22S-R08W-S02NW****REACH 1****POOL SUMMARY**

	<u>Total</u>	Total of all Channel Lengths <u># / Km</u>	Primary Channel Length <u># / Km</u>
All Pools:	52	36.8	37.0
Pools >=1m deep:	2	1.4	1.4
Complex pools (LWD pieces>=3):	9	6.4	6.4
Pool frequency (channel widths/pool):	5.9		
Residual pool depth (avg):	0.45		

# Comment Summary

## Restoration Monitoring Sites 2005

MONITORING AREA: **4-UMP**    SITE ID: **268**    HOUSE CREEK PRE-TX

UNIT#	TYPE	CHAN	DIST. (m)	COMMENTS	NOTE ESTIMATOR	NOTE NUMERATOR
1	CB	00	18.9	HS		PLACED BOULDERS TO FORCE POOLS
2	LP	00	23.9			SMALL STEP BTW POOLS
3	PP	00	30.8			CACT D30S STYT
4	CC	00	45.3	CC, WL		3.3 x 2.1 PARADISE CR. RD
6	LP	00	66.1			SCULPIN
7	RI	00	82.1	WL		REDDS
8	LP	00	93.4			SCULPIN
10	LP	00	112.7			SF (SALMONID FRY)
11	LP	00	120.2	/LA		2.5m x 1m
12	RI	00	137	WL		REDDS RSN
13	LP	00	157.2	WL		REDD SF
14	SC	00	165.3	WL		REDD
15	RI	00	174.8	WL/LA		REDD 2m x 3m
16	LP	00	185.6	WL		SF RSN
18	LP	00	193.4			SF
21	LP	00	205.4			SF
22	SC	00	212.1	WL		REDDS
23	GL	00	239.3	WL		REDDS, SF, TRAIL
24	LP	00	251.1	WL		SF
25	LP	00	256.2			CT, CT D30, S ST, YT, SF
28	RI	00	298.1	WL		REDD

# Comment Summary

## Restoration Monitoring Sites 2005

**MONITORING AREA: 4-UMP    SITE ID: 268    HOUSE CREEK PRE-TX**

<b>UNIT#</b>	<b>TYPE</b>	<b>CHAN</b>	<b>DIST. (m)</b>	<b>COMMENTS</b>	<b>NOTE ESTIMATOR</b>	<b>NOTE NUMERATOR</b>
29	LP	00	309.3	WL, SS LS/	SF, COTTID, REDD	
30	SC	00	314.9	SS/		
31	LP	00	322.9		SF	
32	SC	00	327.3	WL	REDDS	
33	LP	00	338.6		SF	
36	RI	00	364.7	WL	REDDS	
37	LP	00	371.8	WL	RSN	
39	LP	00	397.5	WL	REDDS RSN	
41	LP	00	406.4	WL	RSN	
44	RB	00	437.7	WL	REDDS	
45	LP	00	447.6	WL	SF REDD	
46	RB	00	480.1		AQ INV FLAG R2	
48	CB	00	499.5	/LI	CHMV M30S STLT, 6m x 3m	
50	RI	00	532		SF	
51	RI	00	552	WL	REDDS SF TRAIL	
52	LP	00	561.8		SF	
53	RR	00	577.1	/SS		
54	LP	00	584.1	/SS		
58	RI	00	624.8	WL	REDDS	
59	LP	00	632.6		SF	
61	RB	00	668.7		FLAG - SITE 3, 3 LOGS	

# Comment Summary

## Restoration Monitoring Sites 2005

MONITORING AREA: **4-UMP**    SITE ID: **268**    HOUSE CREEK PRE-TX

UNIT#	TYPE	CHAN	DIST. (m)	COMMENTS	NOTE ESTIMATOR	NOTE NUMERATOR
63	PP	00	690.3		SF	
65	RI	00	711.8	/SS		
66	CB	00	723.6	DJ LI/	7m x 4m	
68	LP	00	738.8	WL LI/	REDD SF 4m x 3m	
70	RI	00	748	WL	CACT D30S YTLT, FLAG: RIP2u91	
72	RI	00	763.8		FLAG - SITE4, 3LOGS	
74	RB	00	789.7	WL	REDDS	
75	LP	00	803.8	WL	REDDS SF	
76	RI	00	833.2	WL/SS	REDDS, FLAG - AQINV R3, U98	
77	LP	00	842.8	LI/	SF 4m x 3m BDRCK = HARDPAN	
78	RI	00	873.4		SF	
79	GL	00	884.4	WL	REDDS	
80	RI	00	904	WL	REDDS SF	
81	LP	00	910.2	WL	REDDS SF	
82	RI	00	918.2	WL	REDDS SF	
85	GL	00	956.7		SF	
86	RP	00	975.8	WL	REDDS	
87	LP	00	982.6	DJ, WL	SF RSN	
89	LP	00	1008.5	WL	CACT D15S STLTL, REDD	
91	LP	00	1017.1	SS/		
92	SC	00	1021.5	/SS		

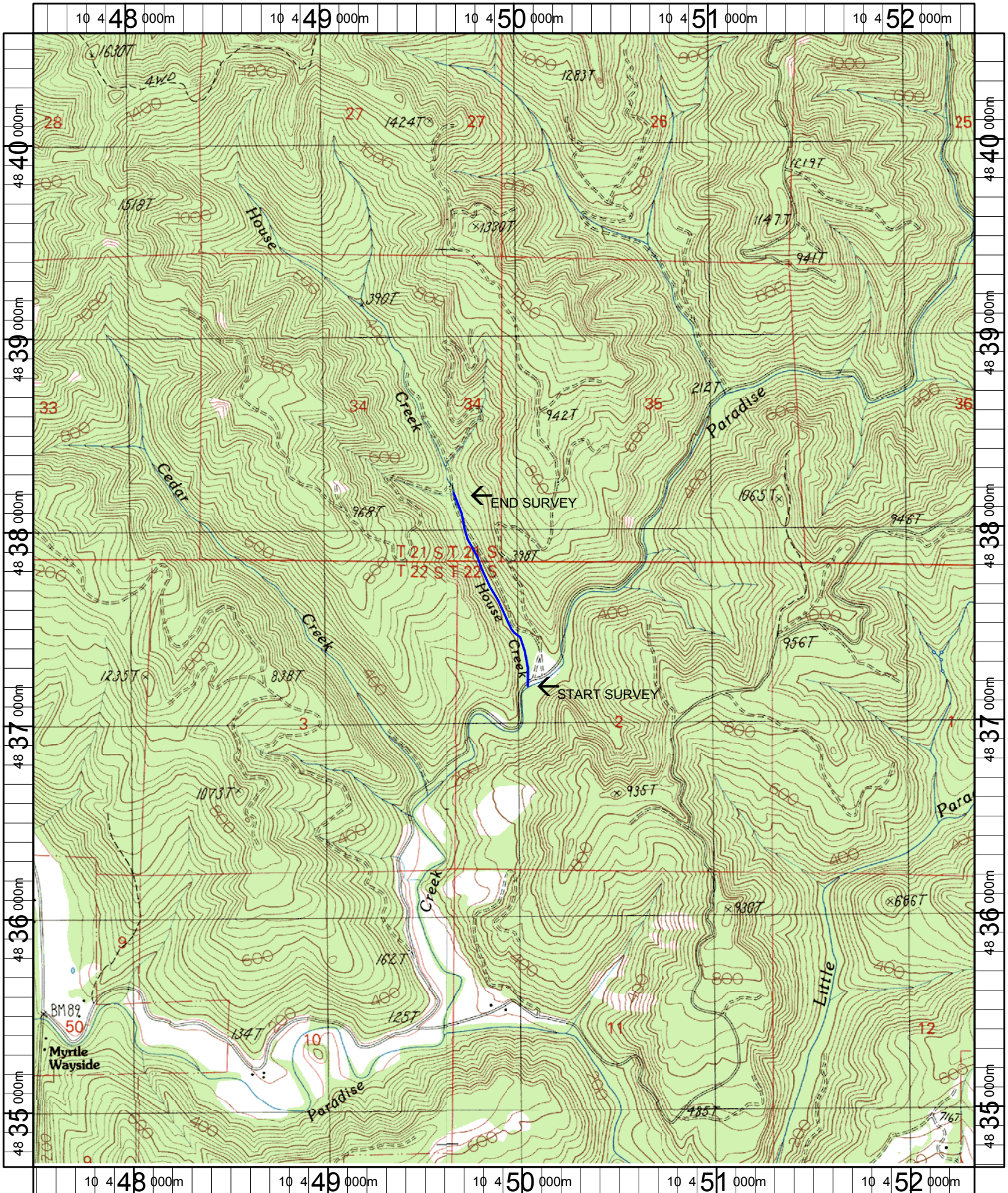
# Comment Summary

## Restoration Monitoring Sites 2005

MONITORING AREA: **4-UMP**    SITE ID: **268**    HOUSE CREEK PRE-TX

UNIT#	TYPE	CHAN	DIST. (m)	COMMENTS	NOTE ESTIMATOR	NOTE NUMERATOR
93	LP	00	1028.5	SS/WL	REDDS BDRCK = HARDPAN SF	
95	LP	00	1067.3		SF	
96	RB	00	1079	WL	TRAIL	
100	LP	00	1110.1		SF	
102	LP	00	1131.8	WL	REDDS SF	
103	LP	00	1139.6	WL/SS	REDDS	
104	LP	00	1153.8		SF	
106	LP	00	1186	WL/SS	REDD SF	
107	RB	00	1228.3	/CE SS	FLAG:SITE6	
110	GL	00	1247		SF	
111	RR	00	1273.4		CHMV D30S YTLT	
112	RI	00	1286.5		SF	
113	RB	00	1316.1		FLAG = SITE 11	
116	BW	10	1356.4	SS/		
120	BW	10	1404.8		CACT D30S STLT	





Name: DEVILS GRAVEYARD  
 Date: 1/27/2005  
 Scale: 1 inch equals 2000 feet

Location: 10 449927 E 4837634 N  
 Caption: HOUSE CREEK RESTORATION SITE - UMPQUA BASIN