

**ODFW AQUATIC INVENTORY PROJECT**  
**OREGON PLAN FOR SALMON & WATERSHEDS**  
**STREAM RESTORATION HABITAT REPORT**

STREAM: North Fork Big Tom Folley Creek (UMP-267)  
BASIN: Umpqua River  
SURVEY TYPE: Post-Tx  
DATE: March 14, 2007  
SURVEY CREW: Jason Hatfield, Ryan Jacobsen  
REPORT PREPARED BY: Paul Jacobsen  
BASIN AREA: 13.8 km<sup>2</sup>  
USGS MAPS: Putman Valley  
ECOREGION: Coast Range Sedimentary

**GENERAL DESCRIPTION:**

The North Fork Big Tom Folley Creek habitat survey extended 3,462 meters. The channel was constrained by hillslopes in a moderate V-shape valley. The average valley width index was 3.6 (range: 1-20). Land use for the reach was second growth timber (15-30 cm dbh) and large timber (30-50 cm dbh) trees. The average unit gradient was 2.1 percent. Rapids (39%), riffles (34%) and scour pools (24%) dominated stream habitat. Gravel (28%) and bedrock (25%) dominated stream substrate. Wood volume was moderate at 23.1 m<sup>3</sup>/100m.

**COMMENTS:**

There were no potential barriers to upstream fish migration in the surveyed length.

The crew noted several habitat structures during the survey.

3 culverts were recorded at the downstream end of the survey reach. 10 debris jams were noted.

3 Steelhead trout, juvenile salmonids, and rough-skinned newts were observed during the survey.

**REACH 1    T21S-R07W-S35SE    REACH 1**

**Valley and Channel Summary**

Valley Characteristics (Percent Reach Length)

<u>Narrow Valley Floor</u>		<u>Broad Valley Floor</u>	
Steep V-shape	0%	Constraining Terraces	0%
Moderate V-shape	100%	Multiple Terraces	0%
Open V-shape	0%	Wide Floodplain	0%
Valley Width Index	3.6	VWI Range:	1 - 20

Channel Morphology (Percent Reach Length)

<u>Constrained</u>		<u>Unconstrained</u>	
Hillslope	100%	Single Channel	0%
Bedrock	0%	Multiple Channel	0%
Terrace	0%	Braided Channel	0%
Alt. Terrace/Hill	0%		
Landuse	0%		

Channel Characteristics

<u>Type</u>	<u>Length (m)</u>	<u>Area (m2)</u>	<u>Dry Units</u>
Primary Channel	3,462	21,462	0
Secondary Channel	0	0	0
Off-Channel Units	84	233	0

Channel Dimensions (m)

<u>Wetted</u>	<u>Active</u>	<u>Floodprone</u> n = 15	<u>First Terrace</u> n = 4
Width: 6.0	Width: 9.2	12.7 ( 9.5 - 16.7 )	18.7 ( 14 - 30.3 )
Depth: 0.40	Height: 0.7	1.4 ( 1.3 - 1.7 )	2.7 ( 2.3 - 3 )

W:D ratio: 13.0    Entrenchment (ACW:FPW ratio): 1.4  
 Stream Flow Type: MF    Habitat Units/100m (total channel length): 4.4  
 Average Unit Gradient: 2.1%    Habitat Units/100m (primary channel length): 4.5  
 Water temperature (°C): 8.0 - 8.0

**Riparian, Bank, and Wood Summary**

	<u>Primary</u>	<u>Secondary</u>
Land Use:	ST	LT
Riparian Vegetation:	D30	S

Bank Condition and Shade

<u>Bank Status</u>	<u>Percent Reach Length</u>	<u>Shade (% of 180)</u>
Actively Eroding:		Reach avg:
Undercut Banks:		Range: -

Large Wood Debris

	<u>Total</u>	<u>Total / 100m primary channel</u>
All pieces (>=3m x 0.15m):	691	20.0
Volume (m <sup>3</sup> ):	801	23.1
Key pieces (>=12m x 0.60m):	17	0.5

OREGON DEPT OF FISH AND WILDLIFE      NF BIG TOM FOLLEY CREEK POST-TX (4-UJP, 267)

HABITAT INVENTORY

Report Date: 4/25/2007

Survey Date:

3/14/2007

REACH 1		T21S-R07W-S35SE					REACH 1					
HABITAT DETAIL												
Habitat Type	Number	Total	Avg	Avg	Total	Large	Substrate					
	Units	Length	Width	Depth	Area		Boulders	Percent Wetted Area				
		(m)	(m)	(m)	(m <sup>2</sup> )	(#>0.5m)	S/O	Snd	Grvl	Cbl	Bldr	Bdrk
CASCADE/BEDROCK	2	48	3.9	0.30	184	0	0	5	5	8	10	73
CASCADE/BOULDERS	5	34	1.7	0.10	66	0	18	12	40	24	6	0
POOL-BACKWATER	10	66	3.3	0.43	213	0	18	52	18	9	2	2
POOL-DAMMED	1	37	4.8	0.65	179	0	30	50	15	0	5	0
POOL-LATERAL SCOUR	57	752	6.9	0.64	5,115	0	6	16	26	16	7	29
RAPID/BEDROCK	19	663	6.9	0.26	4,582	0	1	9	11	11	7	60
RAPID/BOULDERS	20	686	5.5	0.28	3,795	0	0	11	31	34	15	10
RIFFLE	35	1,236	5.8	0.24	7,419	0	1	11	41	25	9	14
STEP/BEDROCK	2	10	3.0	0.06	27	0	0	0	0	0	0	100
STEP/BOULDERS	2	4	7.5	0.23	29	0	0	10	40	10	40	0
STEP/COBBLE	2	7	9.9	0.18	53	0	0	10	25	40	13	13
STEP/LOG	1	3	11.0	0.05	33	0	0	40	40	20	0	0
<b>Total:</b>	156	3,545	6.0	0.40	21,695	0	<b>Avg:</b> 4	15	28	19	8	25

HABITAT SUMMARY									
Habitat Group	Number	Total	Avg	Avg	Wetted Area		Large Boulders		
	Units	Length	Width	Depth	(m <sup>2</sup> )	Percent	Number	(# / 100m <sup>2</sup> )	
		(m)	(m)	(m)					
Dammed & BW Pools	11	103	3.4	0.45	392	1.81%	0	0.0	
Scour Pools	57	752	6.9	0.64	5,115	23.57%	0	0.0	
Glides	0	0			0	0.00%	0	0.0	
Riffles	35	1,236	5.8	0.24	7,419	34.20%	0	0.0	
Rapids	39	1,349	6.2	0.27	8,377	38.61%	0	0.0	
Cascades	7	82	2.4	0.16	251	1.16%	0	0.0	
Step/Falls	7	25	7.4	0.14	142	0.66%	0	0.0	
Dry	0	0			0	0.00%	0	0.0	
Culverts	0	0			0	0.00%	0	0.0	

POOL SUMMARY			
	Total	Total of all Channel Lengths # / Km	Primary Channel Length # / Km
All Pools:	68	19.2	19.6
Pools >=1m deep:	1	0.3	0.3
Complex pools (LWD pieces>=3):	26	7.3	7.5
Pool frequency (channel widths/pool):	5.7		
Residual pool depth (avg):	0.41		

# Comment Summary

## Restoration Monitoring Sites 2007

MONITORING AREA: **4-UMP**    SITE ID: **267**    **NF BIG TOM FOLLEY CREEK POST-T**

UNIT#	TYPE	CHAN	DIST. (m)	COMMENTS	NOTE ESTIMATOR
1	LP	00	11.9	CC	TEMP=8.0
2	SR	00	15.9	CC	
3	LP	00	37.5	CC	
4	RR	01	47.4	/TJ	
5	CB	11	47.4		ACW=2.4, TEMP=8.0
7	RR	00	101.7	HS	CUT LOGS
12	RI	01	220.4	HS	CUT LOGS
17	RR	00	356.9	HS, DJ	HS BACKING WATER BUT NO POOL
18	RR	00	397.1	HS	CUT LOGS ON SIDE OF STREAM
20	RR	00	454.5	HS	PLACED BOULDERS?
21	RI	00	500.7	HS, DJ	CUT LOGS AND BOULDERS
22	LP	00	511.7	WL	JUV SALMONIDS
25	RR	00	599.1	WL	ROUGH NEWT
27	RR	00	626.5	HS	PLACED BOULDERS
31	RI	01	732.2	HS, DJ	CUT LOGS
32	BW	10	732.2	WL	FRY
38	RB	00	845.1	HS	CUT LOGS NOT BLOCKING FLOW
39	LP	00	856.4	HS, DJ	CUT LOGS
40	RI	01	888.6	TJ/	
41	CB	11	888.6		ACW=1.8, TEMP=9.0
66	RR	01	1504.2	HS	LARGE CUT LOGS

# Comment Summary

## Restoration Monitoring Sites 2007

**MONITORING AREA: 4-UMP    SITE ID: 267    NF BIG TOM FOLLEY CREEK POST-T**

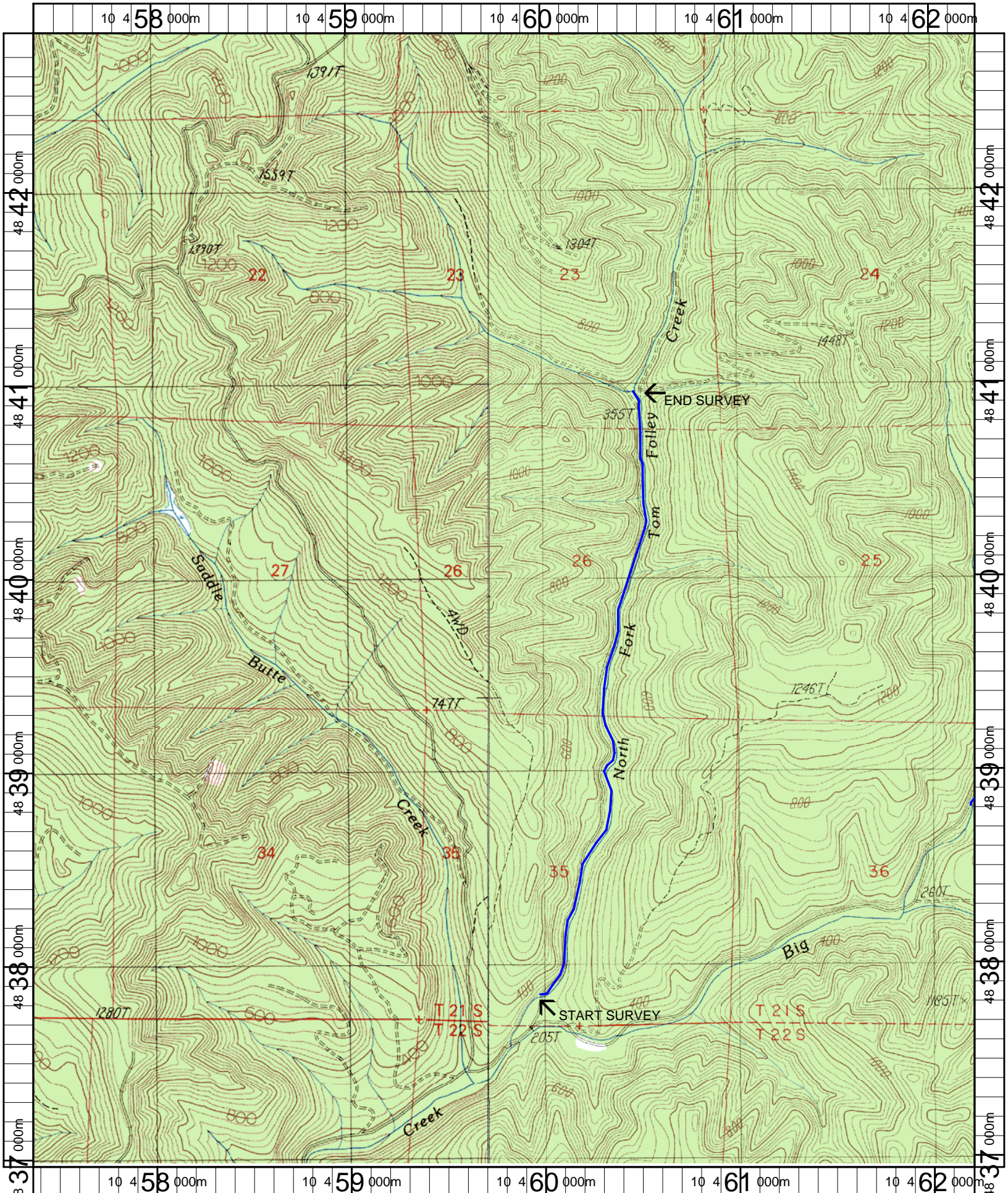
UNIT#	TYPE	CHAN	DIST. (m)	COMMENTS	NOTE ESTIMATOR
68	CR	00	1516.4	HS, DJ	
69	RI	00	1550		WOULD BE A LARGE DP AT FLOOD
72	BW	10	1582.1	WL	FRY
74	RI	00	1628.9	HS	CUT LOGS
75	LP	00	1646.4	HS, DJ, WL	CUT LOGS BOULDERS FRY
77	LP	00	1664.7	HS	BOULDERS
78	SB	00	1668	HS	BOULDERS
82	LP	00	1720	WL	ADULT STEELHEAD
84	LP	00	1767.5	HS	BOULDERS
88	BW	10	1821.5	HS	BOULDERS
91	RB	00	1905.1	DJ	
93	RR	01	1939	TJ/, WL	FRY
94	CB	00	1943		ACW=2.4, TEMP=9.0
95	SL	00	1946	DJ	
97	RB	00	2001	DJ	
98	LP	00	2017.8	WL	FRY
99	RI	01	2055.5	HS	BOULDERS
100	BW	10	2055.5	WL	FRY
101	LP	00	2084.7	HS	BOULDERS
102	RB	00	2110.7	HS	BOULDERS
103	LP	00	2123	/SS	

# Comment Summary

## Restoration Monitoring Sites 2007

MONITORING AREA: **4-UMP**    SITE ID: **267**    **NF BIG TOM FOLLEY CREEK POST-T**

UNIT#	TYPE	CHAN	DIST. (m)	COMMENTS	NOTE ESTIMATOR
104	RI	00	2139.5	WL	FRY
105	LP	00	2152.1	HS	BOULDERS
106	CB	00	2161.8	HS	BOULDERS
108	RB	00	2220.8	/SS	
109	LP	00	2231.3	HS	BOULDERS
114	RI	01	2385.9	SS/	
118	CR	01	2492	/TJ	
119	SR	11	2492		ACW 5 TEMP 9
125	LP	00	2657.4	DJ, WL	NATURAL JAM, STEELHEAD
128	RI	00	2751.6	/SS	
131	RB	00	2860.6	SS/	
132	LP	01	2870.1	TJ/	
133	CB	00	2878.1		ACW=2.4, TEMP=8.5
154	RI	00	3439.6	WL	STEELHEAD, FRY



Name: PUTNAM VALLEY  
 Date: 5/9/2007  
 Scale: 1 inch equals 2000 feet

Location: 10 459800 E 4839881 N  
 Caption: NORTH FORK BIG TOM FOLLEY CREEK RESTORATION SITE -  
 UMPQUA BASIN