

ODFW AQUATIC INVENTORY PROJECT
OREGON PLAN FOR SALMON & WATERSHEDS
STREAM RESTORATION HABITAT REPORT

STREAM: Little Tom Folley Creek Phase 1 (U-266)
BASIN: Umpqua River
SURVEY TYPE: Pre-Tx
DATE: March 21, 2005
SURVEY CREW: Jennifer Schmitt, Neil Jensen
REPORT PREPARED BY: Paul Jacobsen
BASIN AREA: 14.9 km²
USGS MAPS: Elkton
ECOREGION: Coast Range Sedimentary

GENERAL DESCRIPTION:

The Little Tom Folley Creek habitat survey extended 2,422 meters. The channel was constrained by terraces in a broad valley floor. The average valley width index was 5.8 (range: 1.4-9.9). Land use for the reach was timber harvest and young (3-15 cm dbh) trees. The average unit gradient was 1.9 percent. Rapids (26%), riffles (25%) and scour pools (25%) dominated stream habitat. Bedrock (42%) and gravel (21%) dominated stream substrate. Wood volume was low at 13.2 m³/100m.

COMMENTS:

There were no potential barriers to upstream fish migration in the surveyed length.

REACH 1

T22S-R07W-S17NE

REACH 1

Valley and Channel Summary

Valley Characteristics (Percent Reach Length)

<u>Narrow Valley Floor</u>		<u>Broad Valley Floor</u>	
Steep V-shape	0%	Constraining Terraces	100%
Moderate V-shape	0%	Multiple Terraces	0%
Open V-shape	0%	Wide Floodplain	0%
Valley Width Index	5.8	VWI Range:	1.4 - 9.9

Channel Morphology (Percent Reach Length)

<u>Constrained</u>		<u>Unconstrained</u>	
Hillslope	0%	Single Channel	0%
Bedrock	0%	Multiple Channel	0%
Terrace	100%	Braided Channel	0%
Alt. Terrace/Hill	0%		
Landuse	0%		

Channel Characteristics

<u>Type</u>	<u>Length (m)</u>	<u>Area (m2)</u>	<u>Dry Units</u>
Primary Channel	2,422	13,293	0
Secondary Channel	0	0	0
Off-Channel Units	76	88	0

Channel Dimensions (m)

<u>Wetted</u>	<u>Active</u>	<u>Floodprone</u> n = 11	<u>First Terrace</u> n = 10
Width: 5.2	Width: 7.9	11.6 (7.3 - 19.1)	13.3 (7.6 - 22.6)
Depth: 0.44	Height: 0.5	1.1 (0.96 - 1.16)	1.5 (1 - 3.14)

W:D ratio: 14.9 Entrenchment (ACW:FPW ratio): 1.5
 Stream Flow Type: MF Habitat Units/100m (total channel length): 4.4
 Average Unit Gradient: 1.9% Habitat Units/100m (primary channel length): 4.8
 Water temperature (°C): 7.5 - 7.5

Riparian, Bank, and Wood Summary

	<u>Primary</u>	<u>Secondary</u>
Land Use:	TH	YT
Riparian Vegetation:	D30	S

Bank Condition and Shade

<u>Bank Status</u>	<u>Percent Reach Length</u>	<u>Shade (% of 180)</u>
Actively Eroding:		Reach avg:
Undercut Banks:		Range: -

Large Wood Debris

	<u>Total</u>	<u>Total / 100m primary channel</u>
All pieces (>=3m x 0.15m):	290	12.0
Volume (m ³):	319	13.2
Key pieces (>=12m x 0.60m):	13	0.5

OREGON DEPT OF FISH AND WILDLIFE LITTLE TOM FOLLEY PHASE 1 PRE-TX (4-JUMP, 266)

HABITAT INVENTORY

Report Date: 11/29/2005

Survey Date:

3/21/2005

REACH 1

T22S-R07W-S17NE

REACH 1

HABITAT DETAIL

Habitat Type	Number Units	Total Length (m)	Avg Width (m)	Avg Depth (m)	Total Area (m ²)	Large Boulders (#>0.5m)	Substrate					
							Percent Wetted Area					
							S/O	Snd	Grvl	Cbl	Bldr	Bdrk
CASCADE/BEDROCK	11	253	5.1	0.22	1,399	0	4	6	5	2	3	80
CASCADE/BOULDERS	4	44	3.0	0.09	156	0	1	8	35	44	13	0
CULVERT CROSSING	1	16	1.3	0.25	20	0	0	0	0	0	0	100
GLIDE	11	249	5.4	0.35	1,361	0	3	7	6	5	1	77
POOL-BACKWATER	4	17	2.1	0.60	31	0	50	15	0	0	0	35
POOL-DAMMED	2	52	6.4	0.75	339	0	33	33	3	0	0	33
POOL-LATERAL SCOUR	23	443	5.8	0.97	2,571	0	16	34	19	4	1	25
POOL-PLUNGE	2	32	7.4	0.95	252	0	16	26	10	0	0	48
POOL-STRAIGHT SCOUR	4	117	6.6	0.69	753	0	5	11	7	2	3	72
RAPID/BEDROCK	14	497	6.0	0.23	2,941	0	1	3	3	4	3	86
RAPID/BOULDERS	8	169	5.1	0.22	856	0	2	8	37	26	16	11
RIFFLE	22	619	5.0	0.31	3,031	0	5	12	43	16	2	21
RIFFLE W/ POCKETS	3	123	4.3	0.38	552	0	15	18	50	7	2	8
STEP/BEDROCK	1	7	4.5	0.05	32	0	0	0	0	0	0	100
STEP/COBBLE	6	36	4.6	0.19	172	0	0	4	42	48	6	1
STEP/LOG	1	0	2.3	0.06	1	0	55	45	0	0	0	0
Total:	117	2,673	5.2	0.44	14,469	0	Avg: 9	14	21	11	3	42

HABITAT SUMMARY

Habitat Group	Number Units	Total Length (m)	Avg Width (m)	Avg Depth (m)	Wetted Area		Large Boulders	
					(m ²)	Percent	Number	(# / 100m ²)
Dammed & BW Pools	6	69	3.5	0.65	371	2.56%	0	0.0
Scour Pools	29	592	6.0	0.93	3,576	24.72%	0	0.0
Glides	11	249	5.4	0.35	1,361	9.41%	0	0.0
Riffles	25	743	4.9	0.32	3,583	24.77%	0	0.0
Rapids	22	666	5.7	0.22	3,797	26.24%	0	0.0
Cascades	15	296	4.5	0.18	1,556	10.75%	0	0.0
Step/Falls	8	43	4.3	0.16	205	1.42%	0	0.0
Dry	0	0			0	0.00%	0	0.0
Culverts	1	16	1.3	0.25	20	0.14%	0	0.0

REACH 1

T22S-R07W-S17NE

REACH 1

POOL SUMMARY

	<u>Total</u>	Total of all Channel Lengths <u># / Km</u>	Primary Channel Length <u># / Km</u>
All Pools:	35	13.1	14.5
Pools >=1m deep:	12	4.5	5.0
Complex pools (LWD pieces>=3):	11	4.1	4.5
Pool frequency (channel widths/pool):	9.7		
Residual pool depth (avg):	0.65		

Comment Summary

Restoration Monitoring Sites 2005

MONITORING AREA: **4-UMP** SITE ID: **266** LITTLE TOM FOLLEY PHASE 1 PRE-

UNIT#	TYPE	CHAN	DIST. (m)	COMMENTS	NOTE ESTIMATOR	NOTE NUMERATOR
1	PP	00	20.9		CT-CT, D30, S, TH, YT	
2	CC	00	36.4	CC	2.5 x 2.4, RUSTED OUT	
9	LP	00	192.1	LA/		
11	LP	01	257.4	WL, /TJ	REDDS	
12	CB	11	257.4		H = .29, ACW = 1.5	
13	RP	00	303.1	WL, LI/	CT-CT,M30,S,TH,YT,REDDS	
16	LP	00	347.6	/LA, /LI		
17	RI	01	379.1	WL	ELK	
18	BW	10	379.1	/SS		
21	LP	00	412.3	LS/, LA/		
24	LP	00	467.9	SS/ WL /LA	REDDS	
26	LP	00	495.3	WL, RF	REDDS	
28	LP	00	539.7	/LI	CT-CT,D30,S,TH,YT	
31	LP	00	592.8		SMALL STEP	
34	RP	00	685.2	WL	REDDS	
37	RB	00	731.8	WL	REDD	
38	SP	00	746.9		FLAG SITE 1	
40	DP	00	797.1	DJ	CT-CT,D30,S,TH,YT	
41	RI	00	813.5		FLAG SITE 2	
44	SP	01	917.3	TJ/	FLAG SITE 3	
45	CB	11	917.3		H = .32, ACW = 1.65	

Comment Summary

Restoration Monitoring Sites 2005

MONITORING AREA: **4-UMP** SITE ID: **266** LITTLE TOM FOLLEY PHASE 1 PRE-

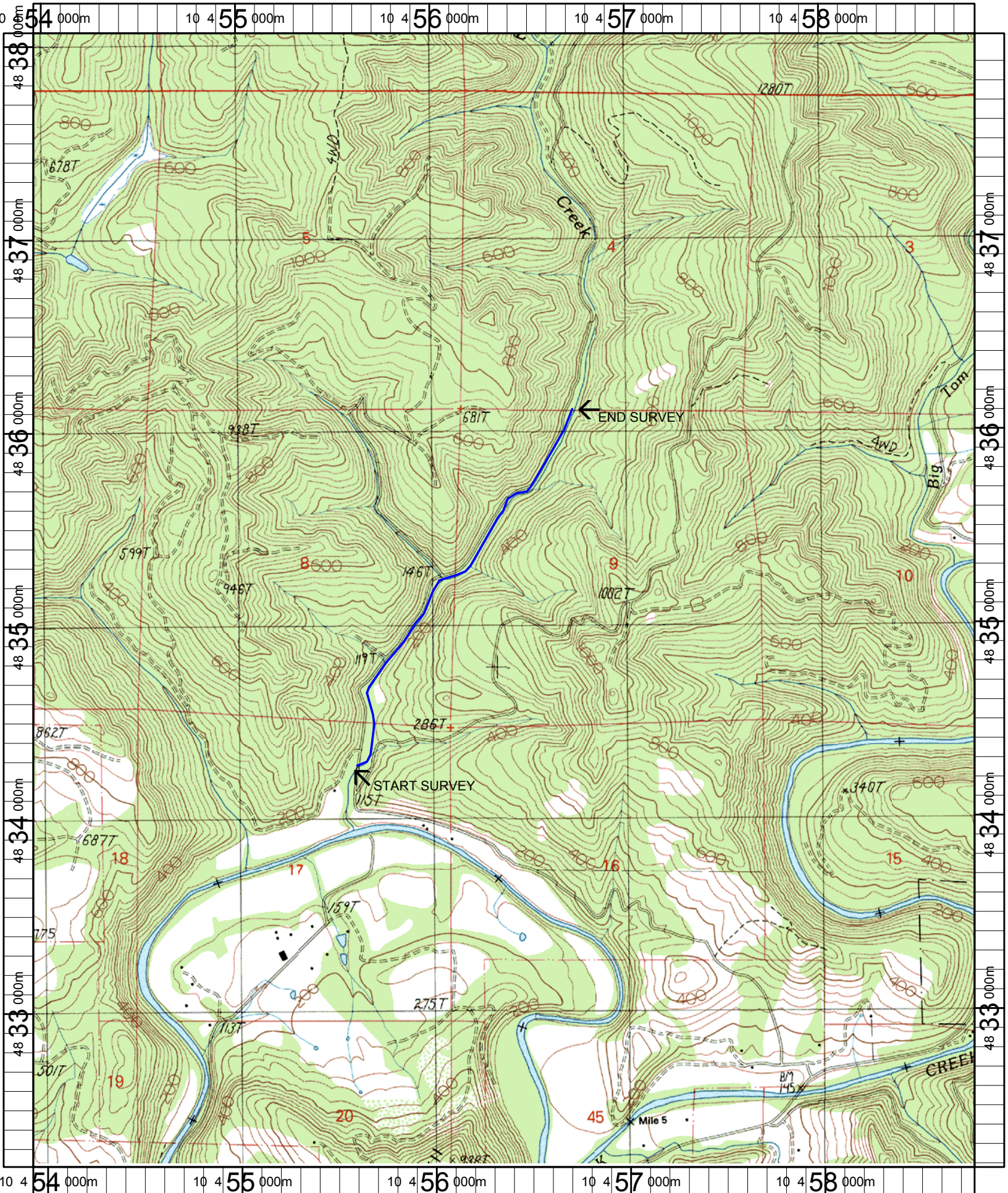
UNIT#	TYPE	CHAN	DIST. (m)	COMMENTS	NOTE ESTIMATOR	NOTE NUMERATOR
46	RR	00	967.3	SS/		
47	RR	00	1017.3	WL	TRAIL, FLAG SITE 5	
48	RR	00	1067.3		CT-CT,M30,S,TH,TH,	
49	RR	00	1108.8		FLAG SITE 6	
50	RR	00	1158.8		FLAG SITE 7 AND 8	
53	RR	00	1259.9	/SS	CH-MV,D30,S,TH,YT,FLAG SITE 11	
55	GL	00	1316.6		FLAG SITE 12	
57	SP	00	1354.5	WL	REDD	
58	CR	00	1364.8	WL	REDD	
62	GL	01	1410.6	WL, TJ/	REDD	
63	CB	11	1410.6	CC	H = .36, ACW = 4.1	
65	LP	00	1441.3	/SS, /SS		
66	RR	00	1471.1		FLAG SITE 14	
67	GL	00	1499.8	/SS, DJ		
69	GL	00	1539.3	/SS	CT-CT,M30, D1,YT,ST BLM FLAG 1	
70	RI	00	1589.3		BLM FLAG 2	
71	RI	01	1639.3	/TJ, /SS	BLM FLAG 4	
72	CR	11	1639.3	/SS	H=.2,ACW=.8,BLM FLAG 6	
76	LP	00	1739.2	CE/, SS/		
77	CR	00	1760.9	DJ		
80	LP	00	1804.5	WL, DJ	CA-CT,C50,D30,MT,ST, REDDS	

Comment Summary

Restoration Monitoring Sites 2005

MONITORING AREA: **4-UMP** SITE ID: **266** LITTLE TOM FOLLEY PHASE 1 PRE-

UNIT#	TYPE	CHAN	DIST. (m)	COMMENTS	NOTE ESTIMATOR	NOTE NUMERATOR
85	RI		1804.5	WL	REDDS	
86	LP		1804.5	/SS		
87	CR		1804.5	/SS		
88	LP		1804.5	DJ		
89	GL	01	1832	TJ/		
90	RB	11	1832		ACW=1.2 ACH=0.2	
93	SC	00	1859		CACT D30S MTST	
95	RB	00	1928		BLM SITE 9	
97	CR	00	1983.7	DJ		
98	SL	00	1984.1		H=0.56m	
100	RI	00	2040.8		BLM SITE 11	
102	CR	01	2069.9	/TJ	BLM SITE 12	
103	CR	11	2069.9		ACW=1.1 ACH=0.34	
105	CR	00	2117.5		BLM SITE 13	
106	RI	00	2152.7		CT, CT C50D15 MTST BLM SITE 14	
107	RR	00	2180.9		BLM SITE 15	
108	RI	00	2202.1		MUCH HIGHER FLOW START	
109	CR	00	2223.2		VISIBILITY 3	
115	RI	01	2393.8		CHMV D15S LTTH	
117	RR	00	2422.1		ENDED EARLY - ACTIVE LOGGING	



Name: ELKTON
 Date: 1/27/2005
 Scale: 1 inch equals 2000 feet

Location: 10 456364 E 4835124 N
 Caption: LITTLE TOM FOLLEY CREEK RESTORATION SITE - UMPQUA BASIN