

ODFW AQUATIC INVENTORY PROJECT
OREGON PLAN FOR SALMON & WATERSHEDS
STREAM RESTORATION HABITAT REPORT

STREAM: Lost Creek (U-246)
BASIN: Umpqua River
SURVEY TYPE: Post-Tx
DATE: March 16, 2005
SURVEY CREW: Jennifer Schmitt, Neil Jensen
REPORT PREPARED BY: Paul Jacobsen
BASIN AREA: 20.7 km²
USGS MAPS: Tyee
ECOREGION: Coast Range Sedimentary

GENERAL DESCRIPTION:

The Lost Creek habitat survey extended 2,384 meters. The channel was constrained by terraces in a broad valley floor. The average valley width index was 7.9 (range: 1.1-20.0). Land use for the reach was rural residential and large (30-50 cm dbh) trees. The average unit gradient was 2.2 percent. Rapids (42%) and scour pools (30%) dominated stream habitat. Bedrock (57%) dominated stream substrate. Wood volume was low at 16.9 m³/100m.

COMMENTS:

There were no potential barriers to upstream fish migration in the surveyed length.

The crew noted several habitat structures during the survey.

OREGON DEPT OF FISH AND WILDLIFE

LOST CREEK POST-TX (4-UJP, 246)

HABITAT INVENTORY

Report Date: 11/29/2005

Survey Date:

3/16/2005

REACH 1		T24S-R07W-S21NE					REACH 1					
HABITAT DETAIL												
Habitat Type	Number Units	Total Length (m)	Avg Width (m)	Avg Depth (m)	Total Area (m ²)	Large Boulders (>0.5m)	Substrate Percent Wetted Area					
							S/O	Snd	Grvl	Cbl	Bldr	Bdrk
CASCADE/BEDROCK	13	277	4.3	0.24	1,204	0	0	3	11	7	6	72
CASCADE/BOULDERS	4	79	4.1	0.16	296	0	0	4	30	44	15	8
GLIDE	4	72	4.6	0.21	317	0	1	4	6	9	0	81
POOL-BACKWATER	2	12	1.9	0.30	21	0	50	10	15	20	0	5
POOL-LATERAL SCOUR	19	284	4.3	0.67	1,243	0	5	17	15	9	6	49
POOL-PLUNGE	1	13	4.0	0.80	53	0	0	3	5	7	0	85
POOL-STRAIGHT SCOUR	19	413	4.8	0.52	2,013	0	4	13	12	5	1	65
POOL-TRENCH	1	22	4.6	1.10	99	0	2	3	10	1	0	84
RAPID/BEDROCK	26	695	4.9	0.14	3,589	0	1	2	9	5	2	81
RAPID/BOULDERS	11	294	4.1	0.14	1,194	0	0	3	44	38	10	6
RIFFLE	14	292	4.1	0.18	1,178	0	0	5	27	12	1	55
STEP/BEDROCK	1	6	5.6	0.39	33	0	0	2	4	2	0	92
STEP/COBBLE	2	6	4.1	0.08	23	0	0	3	40	55	3	0
Total:	117	2,463	4.4	0.33	11,264	0	Avg: 3	7	17	12	4	57

HABITAT SUMMARY								
Habitat Group	Number Units	Total Length (m)	Avg Width (m)	Avg Depth (m)	Wetted Area		Large Boulders	
					(m ²)	Percent	Number	(# / 100m ²)
Dammed & BW Pools	2	12	1.9	0.30	21	0.19%	0	0.0
Scour Pools	40	732	4.6	0.61	3,409	30.26%	0	0.0
Glides	4	72	4.6	0.21	317	2.81%	0	0.0
Riffles	14	292	4.1	0.18	1,178	10.46%	0	0.0
Rapids	37	989	4.6	0.14	4,783	42.46%	0	0.0
Cascades	17	356	4.2	0.22	1,500	13.32%	0	0.0
Step/Falls	3	11	4.6	0.18	56	0.50%	0	0.0
Dry	0	0			0	0.00%	0	0.0
Culverts	0	0			0	0.00%	0	0.0

POOL SUMMARY			
	Total	Total of all Channel Lengths # / Km	Primary Channel Length # / Km
All Pools:	42	17.1	17.6
Pools >=1m deep:	4	1.6	1.7
Complex pools (LWD pieces>=3):	13	5.3	5.5
Pool frequency (channel widths/pool):	6.9		
Residual pool depth (avg):	0.48		

Comment Summary

Restoration Monitoring Sites 2005

MONITORING AREA: **4-UMP** SITE ID: **246** LOST CREEK POST-TX

UNIT#	TYPE	CHAN	DIST. (m)	COMMENTS	NOTE ESTIMATOR	NOTE NUMERATOR
1	RI	00	11.7	WL	REDDS	
2	LP	00	18.9	WL	REDDS	
4	LP	00	58.9	BC WL	TYEE RD.,REDD	
5	RB	00	90	BC WL	TYEE RD., REDD	
6	RI	00	100.8	WL	CHMV D15S RRLT REDDS	
7	SC	00	104.3	/SS		
8	SP	00	131.2	WL	DEER RACCOON	
11	CR	00	216.7	WL	REDDS	
12	GL	00	234.8	SS/		
13	RR	00	285.8	WL	CHMV M30S LTRR, DEER	
14	SP	00	311.2	WL /SS	REDDS, SCULPIN	
15	RR	00	370.7	HS WL	FLAG-HS 1, REDDS LOGS BOULDERS	
16	SP	00	402.3	WL	FLAG-SITE 2, FRY RACCOON	
17	RR	00	427.2	HS /CE	BOULDERS LOGS	
18	LP	00	440	HS	LOGS	
19	SP	00	462.1	WL	3 ADULT STEELHEAD, REDDS	
20	RB	00	475	WL	CTCT M30S LTMT REDDS	
21	SP	00	483.8	WL	REDDS	
22	RR	00	509.1	HS	LOGS	
23	GL	01	520.2	RF TJ/	FLAG-SITE 4	
24	CR	11	520.2		ACW=1.9 ACH=0.23	

Comment Summary

Restoration Monitoring Sites 2005

MONITORING AREA: **4-UMP** SITE ID: **246** LOST CREEK POST-TX

UNIT#	TYPE	CHAN	DIST. (m)	COMMENTS	NOTE ESTIMATOR	NOTE NUMERATOR
25	RR	00	543.2	WL HS /SS	REDDS, LOGS	
26	RR	00	569.7	SS/		
27	TP	00	591.3	SS/		
28	RR	00	634	SS/ HS	LOGS	
29	SP	00	657.2	SS/		
30	CR	00	677.3	SS/		
31	RR	00	710.7	HS /SS	BOULDERS	
32	RI	00	729.7	/SS	CLCT M30S LTMT	
33	RR	00	744.6	/SS, CE		
34	SP	00	754.7		FLAG-SITE 8	
35	RR	00	779.2	HS	LOGS	
36	SP	00	814.5	WL SS/	REDD	
37	RR	00	824.4	WL SS/	REDD	
38	SP	00	855.6	WL SS/	REDD	
39	RR	00	870.4	SS,LA/WL		
40	RI	00	889	SS/ HS WL	LOGS RACCOON	
41	CR	00	917.4	SS/		
42	PP	00	930.6	SS/	CTMT M30G LTMT	
43	SR	00	936.5	SS/		
44	RR	00	958.2	HS SS/	LOGS	
45	RI	00	973.5	SS/SS		

Comment Summary

Restoration Monitoring Sites 2005

MONITORING AREA: **4-UMP** SITE ID: **246** LOST CREEK POST-TX

UNIT#	TYPE	CHAN	DIST. (m)	COMMENTS	NOTE ESTIMATOR	NOTE NUMERATOR
46	CR	00	1000.3	/CE,SS HS	BOULDERS	
47	RI	00	1029.4	/SS WL	TRAIL	
48	RR	00	1037.4	SS/SS		
49	RI	00	1053.3	HS SS/SS	LOGS	
50	SP	00	1084.8	WL SS/	REDD	
51	RB	00	1095.6	WL	TRAIL	
52	LP	00	1114.3	/SS		
53	RB	00	1140.9	/SS		
54	SP	00	1158.3	/SS	CTCT D30D1 MTST	
55	LP	00	1180	WL SS/SS	TRAIL	
56	CB	01	1217	WL SS/SS	TRAIL	
58	LP	10	1217	WL SS/	SALMO FRY REDDS	
60	RR	10	1217	HS	FLAG-SITE 12 LOGS BOULDERS	
62	LP	00	1240.6	WL	REDD	
65	RR	00	1326.7	WL	RACCOON	
66	RR	00	1367		CTCT D03D3 LT	
67	SP	00	1387.5	WL	RACCOON	
68	CB	00	1397.2	/SS		
69	RI	00	1420.6	WL	RACCOON	
70	RB	00	1459.2	/CE, /CE		
71	LP	00	1485.2		END SIGN HAB 274, SALMO FRY	

Comment Summary

Restoration Monitoring Sites 2005

MONITORING AREA: **4-UMP** SITE ID: **246** LOST CREEK POST-TX

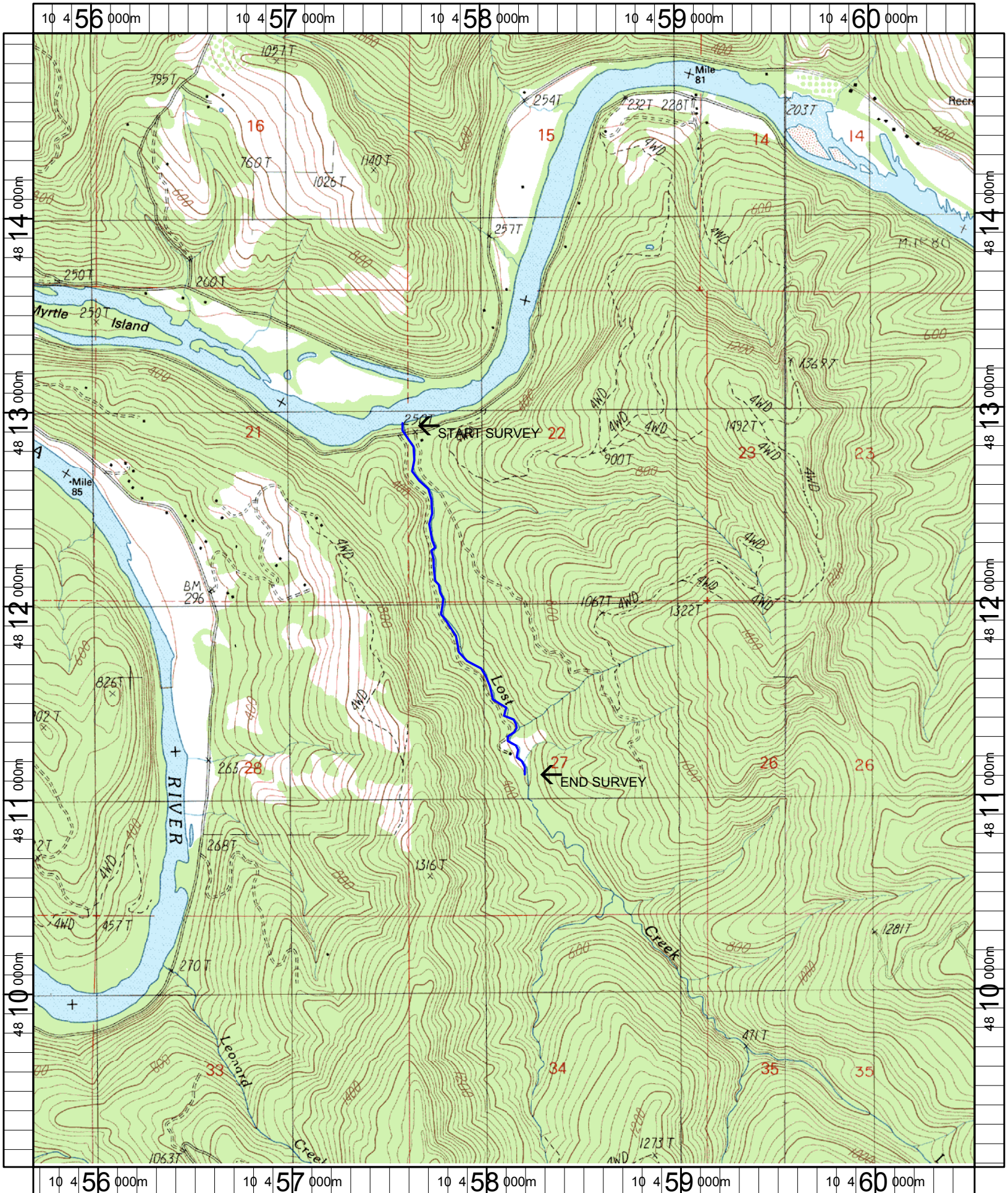
UNIT#	TYPE	CHAN	DIST. (m)	COMMENTS	NOTE ESTIMATOR	NOTE NUMERATOR
72	RB	00	1536.8	/CE		
74	RB	00	1577.9	RF SS/	SPAWN SURVEY END SIGN	
75	SP	00	1596.9	WL	CTMT D30S LTMT	
77	LP	00	1647.5	WL BV	SCAT RACCOON DEER	
79	SP	00	1696.5	BV HS	CUTTINGS LOGS	
80	CR	00	1708.9	HS	LOGS	
81	RI	00	1738	HS WL SS/	LOGS RACCOON	
82	CR	00	1784	/SS /SS BV	SALMO FRY	
83	LP	00	1796.3	HS WL	LOGS RACCOON	
84	CB	00	1819.5	HS	LOGS BOULDER	
85	SP	00	1838.9		CLCT D15S LTRR	
86	CR	01	1864	BV	CUTTINGS	
88	RI	00	1900.5	BV	CUTTINGS	
90	LP	00	1933.8	RF BV HS	CUTTINGS LOGS	
91	CR	00	1948.8	HS	LOGS	
92	RI	00	1970.5	WL	SALMO FRY REDD	
94	LP	00	1990.1	HS	SALMO FRY LOGS	
97	RR	00	2056.7	HS RF SS/	FLAG - SITE 19 LOGS	
98	LP	00	2080.7	BV HS	CLCT D3S RRLT SNORK POOL 14	
99	CB	00	2089.6		FLAG - SITE 20	
100	LP	00	2102.8		SCULPIN	

Comment Summary

Restoration Monitoring Sites 2005

MONITORING AREA: 4-UMP SITE ID: 246 LOST CREEK POST-TX

<u>UNIT#</u>	<u>TYPE</u>	<u>CHAN</u>	<u>DIST. (m)</u>	<u>COMMENTS</u>	<u>NOTE ESTIMATOR</u>	<u>NOTE NUMERATOR</u>
102	LP	00	2116	BV /CE		
108	GL	00	2202	BC	FOOTBRIDGE	
109	RR	00	2246.8	RF		
111	RR	00	2282.1	SS/		
113	RR	00	2310.3		CTCT D3S RRTH	
114	LP	00	2328.9	RF		
116	SP	00	2375.7	BV	CUTTINGS	
117	CR	00	2383.8		CTCT D15S THLT	



Name: TYEE
 Date: 6/13/2005
 Scale: 1 inch equals 2000 feet

Location: 10 458106 E 4812018 N
 Caption: LOST CREEK RESTORATION SITE - UMPQUA BASIN