

ODFW AQUATIC INVENTORY PROJECT
OREGON PLAN FOR SALMON & WATERSHEDS
STREAM RESTORATION HABITAT REPORT

STREAM: Clover Creek (UMP-130)
BASIN: Umpqua River
SURVEY TYPE: Post-Tx
DATE: February 25, 2008
SURVEY CREW: Kyle Brachter, Bobby Gomez
REPORT PREPARED BY: Sharon Tippery
BASIN AREA: 17.2 km²
USGS MAPS: Winchester
ECOREGION: Coast Range Umpqua Valleys

GENERAL DESCRIPTION:

The Clover Creek habitat survey extended 563 meters. The channel was constrained by multiple terraces in a broad valley floor. The average valley width index was 20 (range: 20-20). Land use for the reach was light grazing and agriculture. The average unit gradient was 1.1 percent. Scour pools (69%) and riffles (18%) dominated stream habitat. Gravel (33%) and bedrock (25%) dominated stream substrate. Wood volume was 13.4m³/100m.

COMMENTS:

There were no potential barriers to upstream fish migration in the surveyed length.

The crew noted several habitat structures during the survey.

Gray squirrel, deer tracks, and a Stellars jay were observed during the survey.

**OREGON DEPARTMENT OF FISH AND WILDLIFE
HABITAT INVENTORY**

**CLOVER CREEK
GCG: 4-UMP SITE ID: 130**

Survey Date: 2/25/2008

Report Date: 5/8/2008

T26S-R05W-S26NE

REACH 1

Valley and Channel Summary

Valley Characteristics (Percent Reach Length)

<u>Narrow Valley Floor</u>		<u>Broad Valley Floor</u>	
Steep V-shape	0%	Constraining Terraces	0%
Moderate V-shape	0%	Multiple Terraces	100%
Open V-shape	0%	Wide Floodplain	0%
Valley Width Index	20.0	VWI Range:	20 - 20

Channel Morphology (Percent Reach Length)

<u>Constrained</u>		<u>Unconstrained</u>	
Hillslope	0%	Single Channel	0%
Bedrock	0%	Multiple Channel	0%
Terrace	100%	Braided Channel	0%
Alt. Terrace/Hill	0%		
Landuse	0%		

Channel Characteristics

<u>Type</u>	<u>Length (m)</u>	<u>Area (m2)</u>	<u>Dry Units</u>
Primary	563	2,163	0
Secondary	10	4	0

Channel Dimensions (m)

<u>Wetted</u>	<u>Active</u>	<u>Floodprone</u> n = 5	<u>First Terrace</u> n = 5
Width: 3.5	Width: 4.7	6.6 (4.7 - 8.2)	10.6 (4.7 - 12.8)
Depth: 0.39	Height: 0.4	0.9 (0.8 - 1)	1.9 (1.25 - 2.4)

W:D ratio: 11.1

Stream Flow Type: MF

Average Unit Gradient: 1.1%

Water temperature (°C): 9.0 - 9.0

Entrenchment (ACW:FPW ratio): 1.4

Habitat Units/100m (total channel length): 6.8

Habitat Units/100m (primary channel length): 6.9

Riparian, Bank, and Wood Summary

	<u>Primary</u>	<u>Secondary</u>
Land Use:	LG	AG
Riparian Vegetation:	D15	G

Bank Condition and Shade

<u>Bank Status</u>	<u>Percent Reach Length</u>	<u>Shade (% of 180)</u>
Actively Eroding:		Reach avg:
Undercut Banks:		Range: -

Large Wood Debris

	<u>Total</u>	<u>Total / 100m primary channel</u>
All pieces (>=3m x 0.15m):	36	6.4
Volume (m ³):	75	13.4
Key pieces (>=12m x 0.60m):	0	0.0

OREGON DEPARTMENT OF FISH AND WILDLIFE

CLOVER CREEK

HABITAT INVENTORY

GCG: 4-UMP SITE ID: 130

Survey Date: 2/25/2008

Report Date: 5/8/2008

T26S-R05W-S26NE

REACH 1

HABITAT DETAIL

Habitat Type	Number Units	Total Length (m)	Avg Width (m)	Avg Depth (m)	Total Area (m ²)	Large Boulders (#>0.5m)	Substrate Percent Wetted Area					
							S/O	Snd	Grvl	Cbl	Bldr	Bdrk
POOL-LATERAL SCOUR	18	389	3.7	0.63	1,499	0	6	17	37	11	7	22
RAPID/BEDROCK	2	18	3.0	0.20	59	0	0	0	8	10	8	75
RAPID/BOULDERS	4	47	2.7	0.18	149	0	25	6	16	22	22	9
RIFFLE	11	106	3.2	0.20	400	0	12	8	44	16	8	12
STEP/BEDROCK	3	11	4.4	0.20	51	0	0	0	8	2	3	87
STEP/COBBLE	1	3	3.4	0.15	9	0	0	0	10	75	15	0
Total:	39	573	3.5	0.39	2,167	0	Avg: 9	11	33	14	9	25

HABITAT SUMMARY

Habitat Group	Number Units	Total Length (m)	Avg Width (m)	Avg Depth (m)	Wetted Area		Large Boulders	
					(m ²)	Percent	Number	(# / 100m ²)
Dammed & BW Pools	0	0			0	0.00%	0	0.0
Scour Pools	18	389	3.7	0.63	1,499	69.20%	0	0.0
Glides	0	0			0	0.00%	0	0.0
Riffles	11	106	3.2	0.20	400	18.44%	0	0.0
Rapids	6	65	2.8	0.19	208	9.60%	0	0.0
Cascades	0	0			0	0.00%	0	0.0
Step/Falls	4	14	4.1	0.19	60	2.76%	0	0.0
Dry	0	0			0	0.00%	0	0.0
Culverts	0	0			0	0.00%	0	0.0

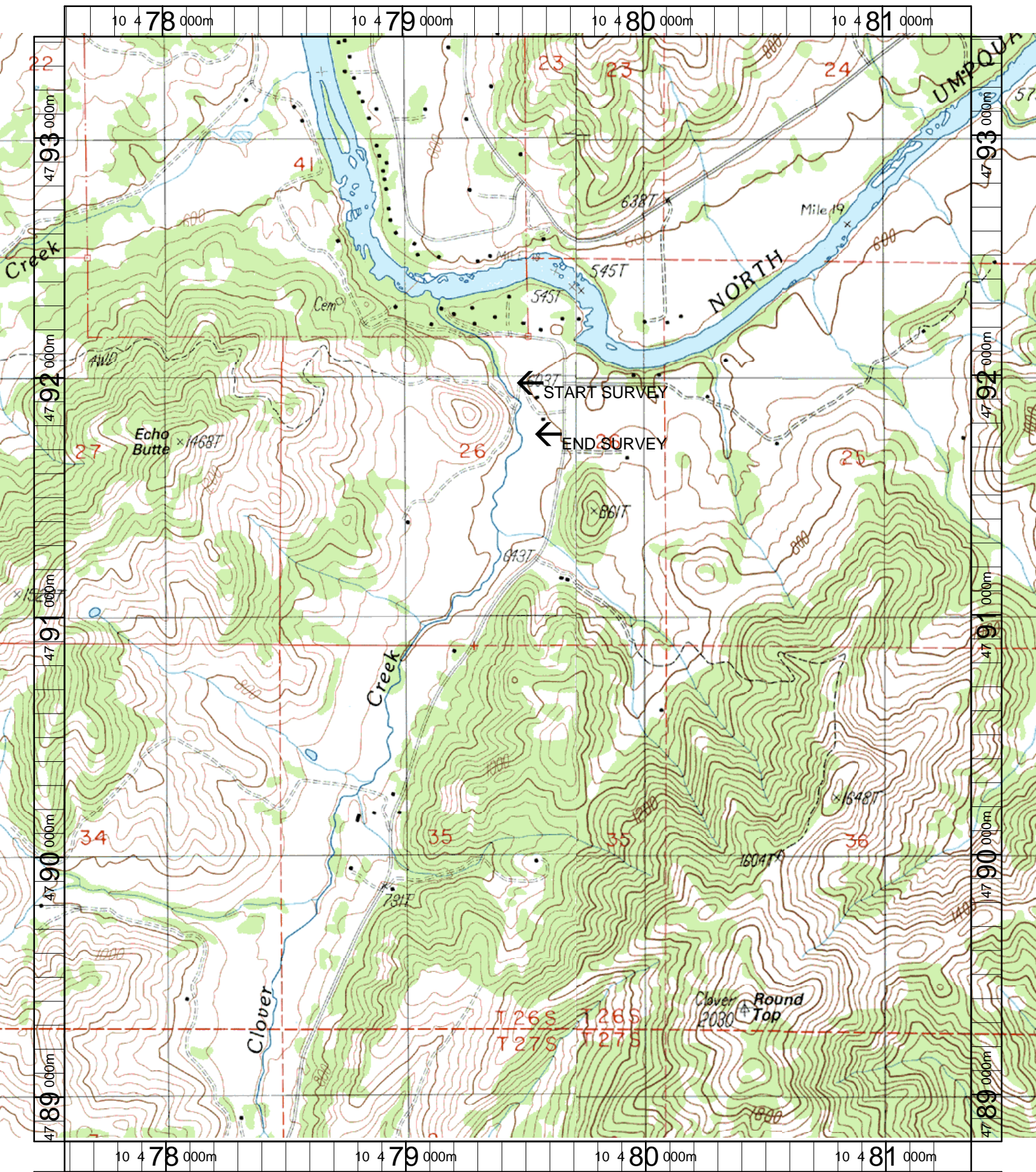
POOL SUMMARY

	Total of all Channel Lengths		Primary Channel Length
	<u>Total</u>	<u># / Km</u>	<u># / Km</u>
All Pools:	18	31.4	32.0
Pools >=1m deep:	1	1.7	1.8
Complex pools (LWD pieces>=3):	6	10.5	10.7
Pool frequency (channel widths/pool):	6.7		
Residual pool depth (avg):	0.42		

COMMENT SUMMARY

MONITORING AREA: 4-UMP SITE ID: 130 STREAM: CLOVER CREEK

UNIT#	TYPE	CHAN	DIST. (m)	COMMENTS	NOTES
1	SR	00	2.3		FORM:CT,MT. VEG:D15,G. USE:LG,AG.
3	LP	00	23.5	HS	GRAY SQUIRREL, CABLED LOGS
5	LP	00	33.9	HS	CABLED LOGS
9	LP	00	73.3	CS/	
10	RI	00	97	CS/CS,BC	
11	LP	00	124.4	HS	CABLED LOGS, STELLARS JAY, DARK-EYED JUNKO
12	SR	00	127.3		CTMT D15G LGAG NORTHERN FLICKER, AMER. ROBIN, ACORN WOODPECKER
13	LP	00	180.3	HS	CABLED LOGS (HS), LOGS (HS)
14	RB	00	192.1		DEER TRACKS
15	LP	00	212.2	HS	LOGS
20	RI	00	272.7		FORM:CT,CT. VEG:D15,G. USE:LG,AG. TEMPERATURE=9C
21	LP	00	309.7	HS	LOGS
24	RB	00	352.6	BC	
27	LP	01	405.5	HS,TJ/	LOGS
28	RI	11	405.5		TEMPERATURE=10C ACW=0.7M
29	RI	00	413.1		FORM:CA,MT. VEG:D15,G. USE:LG,AG. NUTRIA CARCASS.
31	LP	00	459.6	HS	LOGS
32	RI	00	472.3	HS	
33	SR	00	478.3	HS	LOG
37	LP	01	553.3	HS,DJ	LOGS
38	RB	11	553.3		TEMPERATURE=9C ACW=0.4M
39	RI	00	563.3		FORM:CT,CT. VEG:D15,G. USE:LG,AG.



Name: WINCHESTER
 Date: 3/20/2003
 Scale: 1 inch equals 1666 feet

Location: 10 479469 E 4791117 N
 Caption: CLOVER CREEK RESTORATION SITE - NORTH UMPQUA BASIN