

REACH

T26S-R05W-S26NE

REACH

**Valley and Channel Summary**

Valley Characteristics (Percent Reach Length)

<u>Narrow Valley Floor</u>		<u>Broad Valley Floor</u>	
Steep V-shape	0%	Constraining Terraces	0%
Moderate V-shape	0%	Multiple Terraces	100%
Open V-shape	0%	Wide Floodplain	0%
Valley Width Index	7.3	VWI Range:	5 - 15

Channel Morphology (Percent Reach Length)

<u>Constrained</u>		<u>Unconstrained</u>	
Hillslope	0%	Single Channel	0%
Bedrock	0%	Multiple Channel	0%
Terrace	100%	Braided Channel	0%
Alt. Terrace/Hill	0%		
Landuse	0%		

Channel Characteristics

<u>Type</u>	<u>Length (m)</u>	<u>Area (m2)</u>	<u>Dry Units</u>
Primary	539	2,480	0
Secondary	27	111	1

Channel Dimensions (m)

<u>Wetted</u>		<u>Active</u>		<u>Floodprone</u>	<u>First Terrace</u>
Width	4.3	Width	6.4	8.7	11.3
Depth	0.56	Height	0.7	1.3	1.9
		W:D ratio	9.9	Entrenchment	1.4

Stream Flow Type:	MF	Water temp (C):	9.0 - 9.0
Avg. Unit Gradient:	1.1%	Habitat Units/100m:	6.7

**Riparian, Bank, and Wood Summary**

	<u>Primary</u>	<u>Secondary</u>
Land Use:	EX	LG
Riparian Vegetation:	D30	P

Bank Condition and Shade

<u>Bank Status</u>	<u>Percent Reach Length</u>	<u>Shade (% of 180)</u>
Actively Eroding:		Reach avg:
Undercut Banks:		Range: -

Large Wood Debris

	<u>Total</u>	<u>Total / 100m</u>
All pieces (>=3m x 0.15m):	26	4.8
Volume (m <sup>3</sup> ):	77	14.3
Key pieces (>=10m x 0.60m):	15	2.8

OREGON DEPARTMENT OF FISH AND WILDLIFE

CLOVER CREEK POST-TX (U-130)

HABITAT INVENTORY

Report Date: 5/6/03

Survey Date:

2/19/03

REACH		T26S-R05W-S26NE					REACH					
Habitat Type	Number Units	HABITAT DETAIL					Substrate					
		Total Length (m)	Avg Width (m)	Avg Depth (m)	Total Area (m <sup>2</sup> )	Large Boulders (#>0.5m)	Percent Wetted Area					
		S/O	Snd	Grvl	Cbl	Bldr	Bdrk					
POOL-LATERAL SCOUR	20	397	4.6	0.79	1,831	0	22	25	25	4	1	24
POOL-STRAIGHT SCOUR	2	22	2.5	0.45	79	0	40	30	10	0	0	21
PUDDLED UNIT	1	22	5.0	0.10	109	0	80	20	0	0	0	0
RAPID/BOULDERS	1	20	4.0	0.30	80	0	5	5	11	32	42	5
RIFFLE	5	76	4.8	0.28	370	0	7	11	44	4	1	33
STEP/BEDROCK	5	17	4.1	0.27	75	0	2	1	1	2	1	93
STEP/COBBLE	1	11	4.2	0.30	48	0	0	0	6	82	12	0
STEP/LOG	1	0	0.8	0.05	0	0	40	35	25	0	0	0
<b>Total:</b>	<b>36</b>	<b>566</b>	<b>4.3</b>	<b>0.56</b>	<b>2,591</b>	<b>0</b>	<b>Avg 19</b>	<b>19</b>	<b>22</b>	<b>6</b>	<b>2</b>	<b>32</b>

HABITAT SUMMARY								
Habitat Group	Number Units	Total Length (m)	Avg Width (m)	Avg Depth (m)	Wetted Area		Large Boulders	
					(m <sup>2</sup> )	Percent	Number	(# / 100m <sup>2</sup> )
Dammed & BW Pools	0	0			0	0.00%	0	0.0
Scour Pools	22	419	4.4	0.76	1,909	73.70%	0	0.0
Glides	0	0			0	0.00%	0	0.0
Riffles	5	76	4.8	0.28	370	14.28%	0	0.0
Rapids	1	20	4.0	0.30	80	3.07%	0	0.0
Cascades	0	0			0	0.00%	0	0.0
Step/Falls	7	29	3.7	0.24	123	4.74%	0	0.0
Dry	1	22	5.0	0.10	109	4.21%	0	0.0
Culverts	0	0			0	0.00%	0	0.0

POOL SUMMARY		
	<u>Total</u>	<u># / Km</u>
All Pools:	22	40.9
Pools >=1m deep:	6	11.1
Complex pools (LWD pieces>=3):	5	9.3
Pool frequency (channel widths/pool):	4.0	
Residual pool depth (avg):	0.44	

**STREAM SUMMARY**

**CLOVER CREEK POST-TX (U-130)**

Number Units	Total Length (m)	Avg Width (m)	Avg Depth (m)	Total Area (m <sup>2</sup> )	Substrate Percent Wetted Area						Large Boulders (#>0.5m)
					S/O	Snd	Grvl	Cbl	Bldr	Bdrk	
36	566	4.3	0.56	2,591	19	19	22	6	2	32	

Habitat Group	Wetted Area	
	(m <sup>2</sup> )	Percent
Dammed & BW Pools	0	0.00%
Scour Pools	1,909	73.70%
Glides	0	0.00%
Riffles	370	14.28%
Rapids	80	3.07%
Cascades	0	0.00%
Step/Falls	123	4.74%
Dry	109	4.21%
Culverts	0	0.00%

# Comment Summary

## Restoration Monitoring Sites 2003

**MONITORING AREA: 4-UMP SITE ID: 130 CLOVER CREEK POST-TX (U-130)**

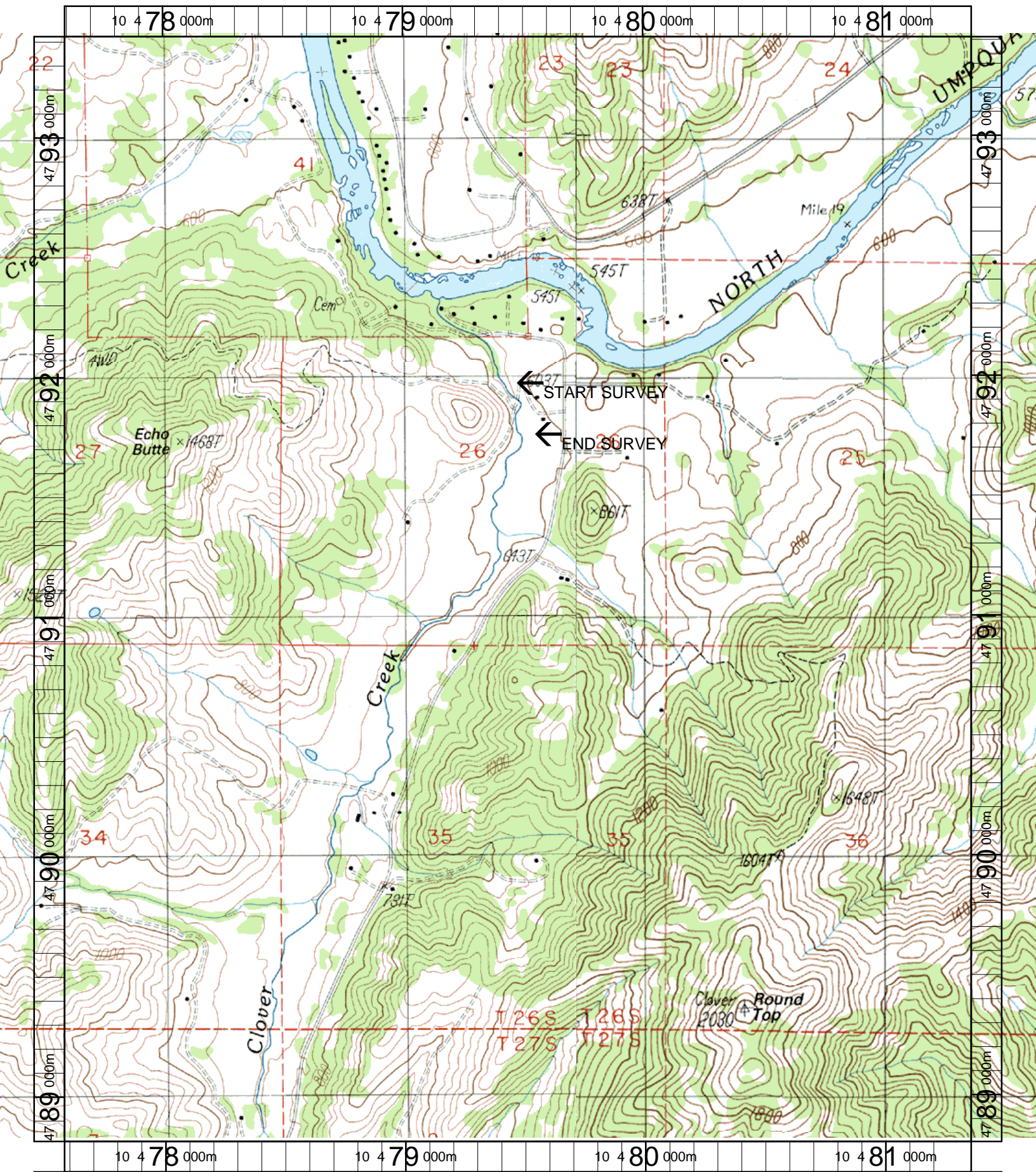
<u>UNIT#</u>	<u>TYPE</u>	<u>CHAN</u>	<u>DIST. (m)</u>	<u>COMMENTS</u>	<u>NOTE ESTIMATOR</u>	<u>NOTE NUMERATOR</u>
1	SR	00	6		T=8C	
2	LP	00	21.3	HS		
3	LP	00	30.8	HS		
4	SR	00	31.5	HS	H=.4M	
7	LP	01	74.1	HS		
9	LP	00	100.1	FC, RF, SS		
10	RI	00	119.8	HS		
11	LP	00	155.8	HS		
12	LP	00	176	HS, WL	DEER	
14	LP	00	206.5	HS		
17	LP	00	248.2		SNKL POOL #3, YLLW FLA	
19	LP	00	287.9	HS	SITE 6, ORANGE DOT FLA	
22	RB	00	331.4	BC, CS/CS	FARM RD	
23	LP	00	350.4		WILLOW PLANTINGS	
24	LP	01	395.8	TJ/, HS		
25	SP	11	395.8	HS	T=10C, TRIB	
26	SL	11	395.8		H=.35M	
27	LP	00	422	HS	T=9C, SNKL SITE #4, SITE	
29	SR	00	440		H=.3M	
30	LP	00	447.5		YELLOW FLAG	
32	LP	00	475.6	FC	#5 SNORKEL POOL	

# Comment Summary

## Restoration Monitoring Sites 2003

MONITORING AREA: 4-UMP SITE ID: 130 CLOVER CREEK POST-TX (U-130)

<u>UNIT#</u>	<u>TYPE</u>	<u>CHAN</u>	<u>DIST. (m)</u>	<u>COMMENTS</u>	<u>NOTE ESTIMATOR</u>	<u>NOTE NUMERATOR</u>
33	RI	00	486.1	2-FC, RF		
35	LP	00	522.9	HS, SS/		
36	LP	00	538.5		END SIGN/ ON	.15 ALDER



Name: WINCHESTER  
 Date: 3/20/2003  
 Scale: 1 inch equals 1666 feet

Location: 10 479469 E 4791117 N  
 Caption: CLOVER CREEK RESTORATION SITE - NORTH UMPQUA BASIN