

REACH

T31S-R06W-S04NE

REACH

Valley and Channel Summary

Valley Characteristics (Percent Reach Length)

Narrow Valley Floor		Broad Valley Floor	
Steep V-shape	0%	Constraining Terraces	100%
Moderate V-shape	0%	Multiple Terraces	0%
Open V-shape	0%	Wide Floodplain	0%

Valley Width Index 5.7 VWI Range: 2 - 11

Channel Morphology (Percent Reach Length)

Constrained		Unconstrained	
Hillslope	0%	Single Channel	0%
Bedrock	0%	Multiple Channel	0%
Terrace	0%	Braided Channel	0%
Alt. Terrace/Hill	100%		
Landuse	0%		

Channel Characteristics

Type	Length (m)	Area (m2)	Dry Units
Primary	528	2,320	0
Secondary	128	495	1

Channel Dimensions (m)

Wetted		Active		Floodprone	First Terrace
Width	4.1	Width	7.5	13.3	18.3
Depth	0.42	Height	0.5	1.0	1.5

W:D ratio 14.8 Entrenchment 1.7

Stream Flow Type: MF Water temp (C): 8.0 - 8.0
Avg. Unit Gradient: 2.2% Habitat Units/100m: 8.9

Riparian, Bank, and Wood Summary

	Primary	Secondary
Land Use:	YT	LG
Riparian Vegetation:	D30	S

Bank Condition and Shade

Bank Status	Percent Reach Length	Shade (% of 180)
Actively Eroding:		Reach avg:
Undercut Banks:		Range: -

Large Wood Debris

	Total	Total / 100m
All pieces (>=3m x 0.15m):	72	13.6
Volume (m ³):	85	16.2
Key pieces (>=10m x 0.60m):	12	2.3

OREGON DEPARTMENT OF FISH AND WILDLIFE

CATCHING CREEK POST-TX (U-127)

HABITAT INVENTORY

Report Date: 5/6/03

Survey Date:

3/17/03

REACH		T31S-R06W-S04NE					REACH					
HABITAT DETAIL												
Habitat Type	Number Units	Total Length (m)	Avg Width (m)	Avg Depth (m)	Total Area (m ²)	Large Boulders (#>0.5m)	Substrate					
							Percent Wetted Area					
							S/O	Snd	Grvl	Cbl	Bldr	Bdrk
DRY UNIT	1	65	5.0	0.00	325	0	9	9	27	45	9	0
POOL-BACKWATER	3	11	1.6	0.33	19	0	32	42	14	12	0	0
POOL-LATERAL SCOUR	13	135	4.4	0.79	611	0	4	15	56	20	5	0
POOL-PLUNGE	1	5	6.0	0.80	29	0	6	44	33	6	6	6
POOL-STRAIGHT SCOUR	1	13	4.0	0.80	53	0	30	15	40	10	5	0
RAPID/BOULDERS	16	265	4.0	0.24	1,097	0	0	5	50	39	6	0
RIFFLE	9	151	4.1	0.27	636	0	1	6	44	46	4	0
STEP/BEDROCK	1	0	3.3	0.01	1	0	50	25	25	0	0	0
STEP/BOULDERS	1	8	4.5	0.15	35	0	0	10	30	30	30	0
STEP/COBBLE	1	2	4.8	0.25	10	0	0	5	25	70	0	0
Total:	47	656	4.1	0.42	2,815	0	Avg 5	12	46	32	5	0

HABITAT SUMMARY								
Habitat Group	Number Units	Total Length (m)	Avg Width (m)	Avg Depth (m)	Wetted Area		Large Boulders	
					(m ²)	Percent	Number	(# / 100m ²)
Dammed & BW Pools	3	11	1.6	0.33	19	0.67%	0	0.0
Scour Pools	15	153	4.5	0.79	693	24.61%	0	0.0
Glides	0	0			0	0.00%	0	0.0
Riffles	9	151	4.1	0.27	636	22.60%	0	0.0
Rapids	16	265	4.0	0.24	1,097	38.96%	0	0.0
Cascades	0	0			0	0.00%	0	0.0
Step/Falls	3	10	4.2	0.14	46	1.62%	0	0.0
Dry	1	65	5.0	0.00	325	11.54%	0	0.0
Culverts	0	0			0	0.00%	0	0.0

POOL SUMMARY		
	<u>Total</u>	<u># / Km</u>
All Pools:	18	34.1
Pools >=1m deep:	4	7.6
Complex pools (LWD pieces>=3):	6	11.4
Pool frequency (channel widths/pool):	4.8	
Residual pool depth (avg):	0.50	

STREAM SUMMARY

CATCHING CREEK POST-TX (U-127)

Number Units	Total Length (m)	Avg Width (m)	Avg Depth (m)	Total Area (m ²)	Substrate Percent Wetted Area						Large Boulders (>0.5m)
					S/O	Snd	Grvl	Cbl	Bldr	Bdrk	
47	656	4.1	0.42	2,815	5	12	46	32	5	0	

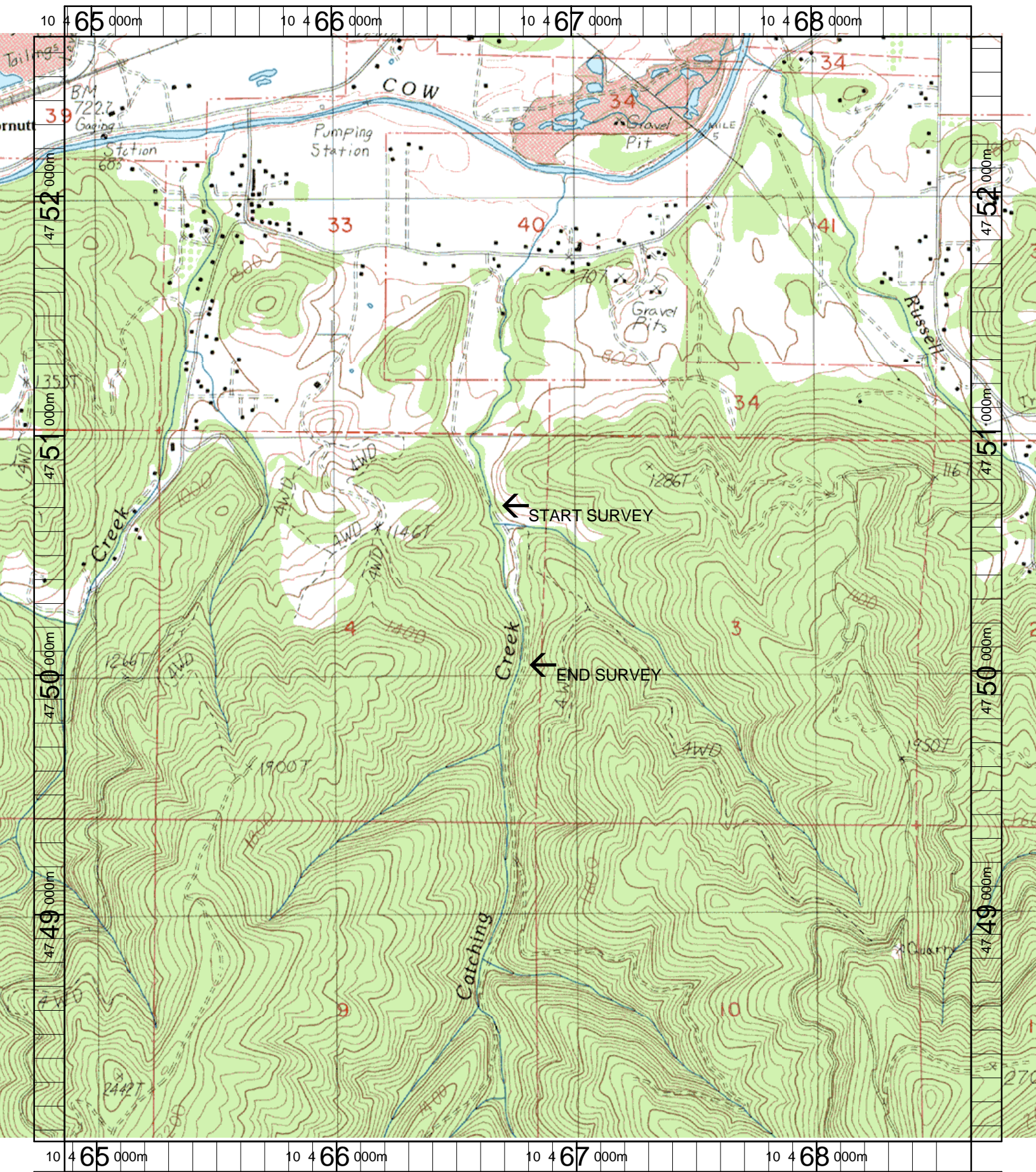
Habitat Group	Wetted Area	
	(m ²)	Percent
Dammed & BW Pools	19	0.67%
Scour Pools	693	24.61%
Glides	0	0.00%
Riffles	636	22.60%
Rapids	1,097	38.96%
Cascades	0	0.00%
Step/Falls	46	1.62%
Dry	325	11.54%
Culverts	0	0.00%

Comment Summary

Restoration Monitoring Sites 2003

MONITORING AREA: 4-UMP SITE ID: 127 CATCHING CREEK POST-TX (U-127)

<u>UNIT#</u>	<u>TYPE</u>	<u>CHAN</u>	<u>DIST. (m)</u>	<u>COMMENTS</u>	<u>NOTE ESTIMATOR</u>	<u>NOTE NUMERATOR</u>
1	RI	00	14		T=8C	
3	LP	00	44.4	HS		
7	LP	00	105.3	HS		
9	RB	01	139.3		PINCH PT	
12	LP	01	180.1	HS		
13	BW	10	180.1		JUV FISH	
16	LP	02	180.1		NEW CHNL	
20	RB	01	228.8	TJ/, BV		
21	RI	11	228.8		T=9C, ACW=2.2	
28	LP	10	278.1	HS		
35	RB	00	398.5	SS/		
40	SB	01	451.5		T=8C	
41	LP	01	458.4	HS		
43	DU	02	465		CREATED BY HS	
45	RB	00	503.1	HS		
46	LP	00	510.6	HS		
47	LP	00	527.9	HS		



Name: NICKEL MT
 Date: 3/21/2003
 Scale: 1 inch equals 1666 feet

Location: 10 466762 E 4750355 N
 Caption: CATCHING CREEK RESTORATION SITE - COW CR/S.
 UMPQUA BASIN