

REACH

T21S-R08W-S04SW

REACH

**Valley and Channel Summary**

Valley Characteristics (Percent Reach Length)

<u>Narrow Valley Floor</u>		<u>Broad Valley Floor</u>	
Steep V-shape	0%	Constraining Terraces	100%
Moderate V-shape	0%	Multiple Terraces	0%
Open V-shape	0%	Wide Floodplain	0%
Valley Width Index	3.0	VWI Range:	2 - 4

Channel Morphology (Percent Reach Length)

<u>Constrained</u>		<u>Unconstrained</u>	
Hillslope	0%	Single Channel	0%
Bedrock	0%	Multiple Channel	0%
Terrace	0%	Braided Channel	0%
Alt. Terrace/Hill	100%		
Landuse	0%		

Channel Characteristics

<u>Type</u>	<u>Length (m)</u>	<u>Area (m2)</u>	<u>Dry Units</u>
Primary	507	4,468	0
Secondary	35	82	0

Channel Dimensions (m)

<u>Wetted</u>		<u>Active</u>		<u>Floodprone</u>	<u>First Terrace</u>
Width	8.1	Width	11.7	14.1	17.5
Depth	0.52	Height	0.8	1.7	3.1
		W:D ratio	14.1	Entrenchment	1.2

Stream Flow Type:	MF	Water temp (C):	8.5 - 8.5
Avg. Unit Gradient:	1.0%	Habitat Units/100m:	6.7

**Riparian, Bank, and Wood Summary**

	<u>Primary</u>	<u>Secondary</u>
Land Use:	ST	YT
Riparian Vegetation:	D30	G

Bank Condition and Shade

<u>Bank Status</u>	<u>Percent Reach Length</u>	<u>Shade (% of 180)</u>
Actively Eroding:		Reach avg:
Undercut Banks:		Range: -

Large Wood Debris

	<u>Total</u>	<u>Total / 100m</u>
All pieces (>=3m x 0.15m):	47	9.3
Volume (m <sup>3</sup> ):	54	10.7
Key pieces (>=10m x 0.60m):	4	0.8

OREGON DEPARTMENT OF FISH AND WILDLIFE

BIG CREEK POST-TX (U-126)

HABITAT INVENTORY

Report Date: 5/6/03

Survey Date:

2/4/03

REACH		T21S-R08W-S04SW						REACH					
Habitat Type	Number Units	HABITAT DETAIL						Substrate					
		Total	Avg	Avg	Total	Large	Percent Wetted Area						
		Length (m)	Width (m)	Depth (m)	Area (m <sup>2</sup> )	Boulders (#>0.5m)	S/O	Snd	Grvl	Cbl	Bldr	Bdrk	
CASCADE/BOULDERS	2	20	0.8	0.06	16	0	3	8	65	15	10	0	
POOL-BACKWATER	2	15	4.3	0.35	66	0	6	59	5	0	24	6	
POOL-DAMMED	1	27	9.5	0.90	252	0	0	15	5	0	2	78	
POOL-LATERAL SCOUR	5	107	8.7	0.87	942	0	0	9	8	0	5	78	
POOL-PLUNGE	2	22	8.8	0.85	198	0	0	3	3	9	36	49	
POOL-STRAIGHT SCOUR	2	28	9.3	1.00	263	0	0	14	12	0	12	62	
RAPID/BEDROCK	4	80	8.9	0.33	714	0	0	2	2	0	13	84	
RAPID/BOULDERS	1	14	9.0	0.30	126	0	0	0	29	29	38	5	
RIFFLE	10	195	8.7	0.42	1,679	0	2	11	16	0	4	66	
RIFFLE W/ POCKETS	1	14	7.5	0.40	103	0	0	5	0	0	1	94	
STEP/BEDROCK	1	6	9.5	0.15	58	0	0	0	0	0	5	95	
STEP/BOULDERS	3	14	9.0	0.57	132	0	3	5	8	0	37	47	
<b>Total:</b>	<b>34</b>	<b>542</b>	<b>8.1</b>	<b>0.52</b>	<b>4,551</b>	<b>0</b>	<b>Avg 1</b>	<b>11</b>	<b>13</b>	<b>2</b>	<b>13</b>	<b>60</b>	

HABITAT SUMMARY								
Habitat Group	Number Units	Total Length (m)	Avg Width (m)	Avg Depth (m)	Wetted Area		Large Boulders	
					(m <sup>2</sup> )	Percent	Number	(# / 100m <sup>2</sup> )
Dammed & BW Pools	3	42	6.0	0.53	318	6.99%	0	0.0
Scour Pools	9	157	8.8	0.89	1,404	30.86%	0	0.0
Glides	0	0			0	0.00%	0	0.0
Riffles	11	209	8.6	0.42	1,782	39.16%	0	0.0
Rapids	5	94	8.9	0.32	840	18.47%	0	0.0
Cascades	2	20	0.8	0.06	16	0.35%	0	0.0
Step/Falls	4	20	9.1	0.46	190	4.18%	0	0.0
Dry	0	0			0	0.00%	0	0.0
Culverts	0	0			0	0.00%	0	0.0

POOL SUMMARY		
	<u>Total</u>	<u># / Km</u>
All Pools:	12	23.7
Pools >=1m deep:	3	5.9
Complex pools (LWD pieces>=3):	2	3.9
Pool frequency (channel widths/pool):	3.8	
Residual pool depth (avg):	0.47	

**STREAM SUMMARY**

**BIG CREEK POST-TX (U-126)**

Number Units	Total Length (m)	Avg Width (m)	Avg Depth (m)	Total Area (m <sup>2</sup> )	Substrate Percent Wetted Area						Large Boulders (#>0.5m)
					S/O	Snd	Grvl	Cbl	Bldr	Bdrk	
34	542	8.1	0.52	4,551	1	11	13	2	13	60	

Habitat Group	Wetted Area	
	(m <sup>2</sup> )	Percent
Dammed & BW Pools	318	6.99%
Scour Pools	1,404	30.86%
Glides	0	0.00%
Riffles	1,782	39.16%
Rapids	840	18.47%
Cascades	16	0.35%
Step/Falls	190	4.18%
Dry	0	0.00%
Culverts	0	0.00%

# Comment Summary

## Restoration Monitoring Sites 2003

**MONITORING AREA: 4-UMP SITE ID: 126 BIG CREEK POST-TX (U-126)**

<u>UNIT#</u>	<u>TYPE</u>	<u>CHAN</u>	<u>DIST. (m)</u>	<u>COMMENTS</u>	<u>NOTE ESTIMATOR</u>	<u>NOTE NUMERATOR</u>
1	RI	00	17		CARCASS, T=7.25C	
2	SB	00	18.2	HS	H=.25	
4	SB	00	50.3	HS	H=.3M, ORANGE FLAG	
5	LP	00	93.6	WL	CF	
6	RI	00	106.6	HS		
8	CB	11	131.6	TJ/	T=8C, ACW=1.5, <1% FLO	
11	CB	11	177.8	/TJ	ACW=1.4, T=9C	
12	RI	00	202.8	HS	CARCASS #15200 8/6/02 S	
13	RI	00	211.8	HS	BC-6	
14	SP	00	220.8	HS	RANDOM BLDR CLUSTER	
16	LP	00	245.3	HS	BC-7 LOG JAM BELOW	
20	SB	00	302.8	HS	SITE #8, AQ INV 32201 RI-	
21	DP	00	329.3	CE/		
22	RP	00	343	HS	T=9.5C	
23	LP	01	357.7	HS	PHOTO	
24	BW	10	357.7	HS		
25	PP	01	364.2		BC-9, LOG/BLDR WEDGE	
28	LP	00	394	/CE, HS		
29	RR	00	412.8	HS		
30	RI	00	437.8		CARCASS	
33	RB	00	491.1	HS		

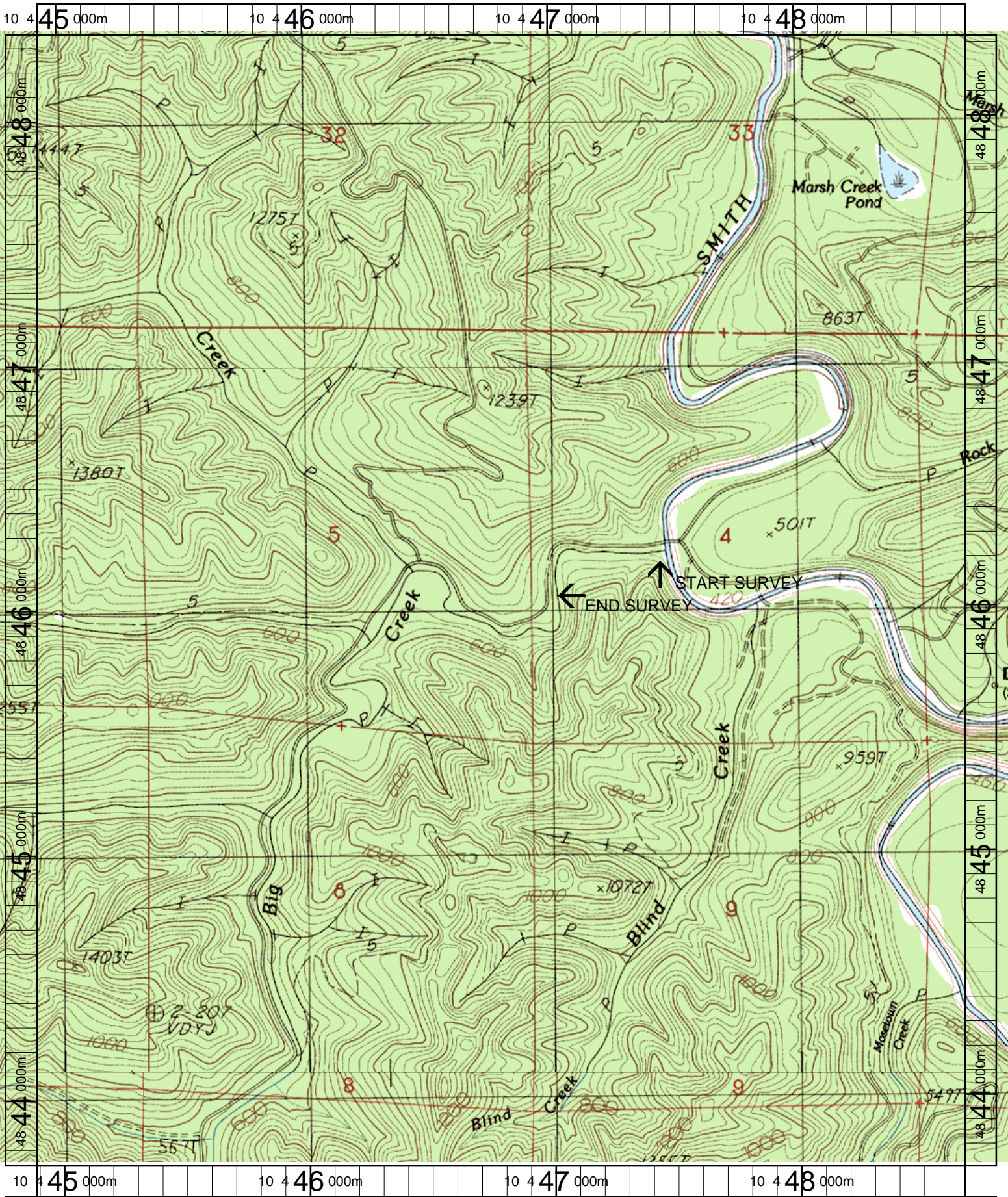
# Comment Summary

## Restoration Monitoring Sites 2003

MONITORING AREA: 4-UMP SITE ID: 126 BIG CREEK POST-TX (U-126)

<u>UNIT#</u>	<u>TYPE</u>	<u>CHAN</u>	<u>DIST. (m)</u>	<u>COMMENTS</u>	<u>NOTE ESTIMATOR</u>	<u>NOTE NUMERATOR</u>
34	PP	00	506.5	HS		





Name: TWIN SISTERS  
 Date: 3/20/2003  
 Scale: 1 inch equals 1666 feet

Location: 10 446789 E 4846036 N  
 Caption: BIG CREEK RESTORATION SITE - SMITH BASIN