

REACH 1

T23S-R10W-7SE

REACH 1

Valley and Channel Summary

Valley Characteristics (Percent Reach Length)

<u>Narrow Valley Floor</u>		<u>Broad Valley Floor</u>	
Steep V-shape	0	Constraining Terraces	0
Moderate V-shape	100	Multiple Terraces	0
Open V-shape	0	Wide Floodplain	0

Valley Width Index avg: 1.5 range: 1.2-2.3

Channel Morphology (Percent Reach Length)

<u>Constrained</u>		<u>Unconstrained</u>	
Hillslope	100	Single Channel	0
Bedrock	0	Multiple Channel	0
Terrace	0	Braided Channel	0
Alt. Terrace/Hill	0		
Landuse	0		

Channel Characteristics

<u>Type</u>	<u>Length(m)</u>	<u>Area (m2)</u>	<u>Dry Units</u>
Primary	503	6,274	0
Secondary	21	28	0

Channel Dimensions (m)

<u>Wetted</u>	<u>Active</u>	<u>Floodprone</u>	<u>First Terrace</u>
Width 11.4	17.9	21.9	24.7
Depth 0.74	Height 0.9	1.8	3.0
	W:D ratio 20.1	Entrenchment 1.2	

Stream Flow Type: MF Water Temp: 6.0-6.0°C  
 Avg. Unit Gradient: 1.4% Habitat Units/100m: 5.0

Riparian, Bank, and Wood Summary

	<u>Primary</u>	<u>Secondary</u>
Land Use:	LT	
Riparian Vegetation:	D30	C50

Bank Condition and Shade

<u>Bank Status</u>	<u>Percent Reach Length</u>	<u>Shade (% of 180)</u>
Actively Eroding	0%	Reach avg: 0%
Undercut Banks	0%	Range: 0- 0

Large Woody Debris

	<u>Total</u>	<u>Total/100m</u>
All pieces (≥3m x 0.15m)	38	7.6
Volume (m <sup>3</sup> )	82	16.4
Key pieces (≥10m x 0.6m)	7	1.4

REACH 1

T23S-R10W-7SE

REACH 1

HABITAT DETAIL

Habitat Type	Number Units	Total Length (m)	Avg Width (m)	Avg Depth (m)	Total Area (m <sup>2</sup> )	Large Boulders (#>0.5m)	Substrate Percent Wetted Area					
							S/O	Snd	Grvl	Cbbl	Bldr	Bdrk
CASCADE/BEDROCK	4	58	6.3	0.33	546	0	13	3	3	0	25	58
CASCADE/BOULDERS	2	56	13.7	0.72	752	0	0	5	15	18	40	23
POOL-BACKWATER	1	8	2.2	0.28	17	0	0	40	40	15	5	0
POOL-DAMMED	1	14	13.1	0.73	186	0	0	15	15	0	0	70
POOL-LATERAL SCOUR	4	123	12.2	1.23	1,465	0	0	15	36	10	6	33
POOL-PLUNGE	2	43	16.3	1.34	704	0	0	5	20	10	18	48
POOL-STRAIGHT SCOUR	3	79	11.0	1.23	928	0	0	10	32	7	12	40
RAPID/BEDROCK	3	69	12.0	0.60	810	0	0	3	15	15	18	48
RIFFLE	2	46	10.5	0.58	481	0	0	5	45	10	5	35
RIFFLE W/ POCKETS	1	20	14.7	0.48	296	0	0	0	70	10	10	10
STEP/BEDROCK	2	7	14.0	0.19	105	0	0	0	0	0	0	100
STEP/LOG	1	1	15.4	0.25	12	0	0	0	100	0	0	0
<b>Total:</b>	<b>26</b>	<b>524</b>	<b>11.4</b>	<b>0.74</b>	<b>6,302</b>	<b>0</b>	<b>Avg: 2</b>	<b>8</b>	<b>26</b>	<b>8</b>	<b>14</b>	<b>43</b>

HABITAT SUMMARY

Habitat Group	No. Units	Total Length (m)	Avg Width (m)	Avg Depth (m)	Wetted Area (m <sup>2</sup> )	Percent	Large Number	Boulders #/100m <sup>2</sup>
Dammed & BW Pools	2	22	7.7	0.51	203	3.22	0	0.0
Scour Pools	9	245	12.7	1.25	3,097	49.14	0	0.0
Glides	0	0	-	-	0	0.00	0	0.0
Riffles	3	66	11.9	0.55	777	12.32	0	0.0
Rapids	3	69	12.0	0.60	810	12.86	0	0.0
Cascades	6	114	8.8	0.46	1,298	20.59	0	0.0
Step/Falls	3	8	14.4	0.21	118	1.86	0	0.0
Dry	0	0	-	-	0	0.00	0	0.0

POOL SUMMARY

All Pools	<u>Total</u>	<u>#/Km</u>
	11	21.0
Pools ≥1m deep:	9	17.2
Complex pools (LWD pieces ≥3):	4	7.6
Pool Frequency (channel widths/pool):	2.7	
Residual pool depth (avg)	0.80m	

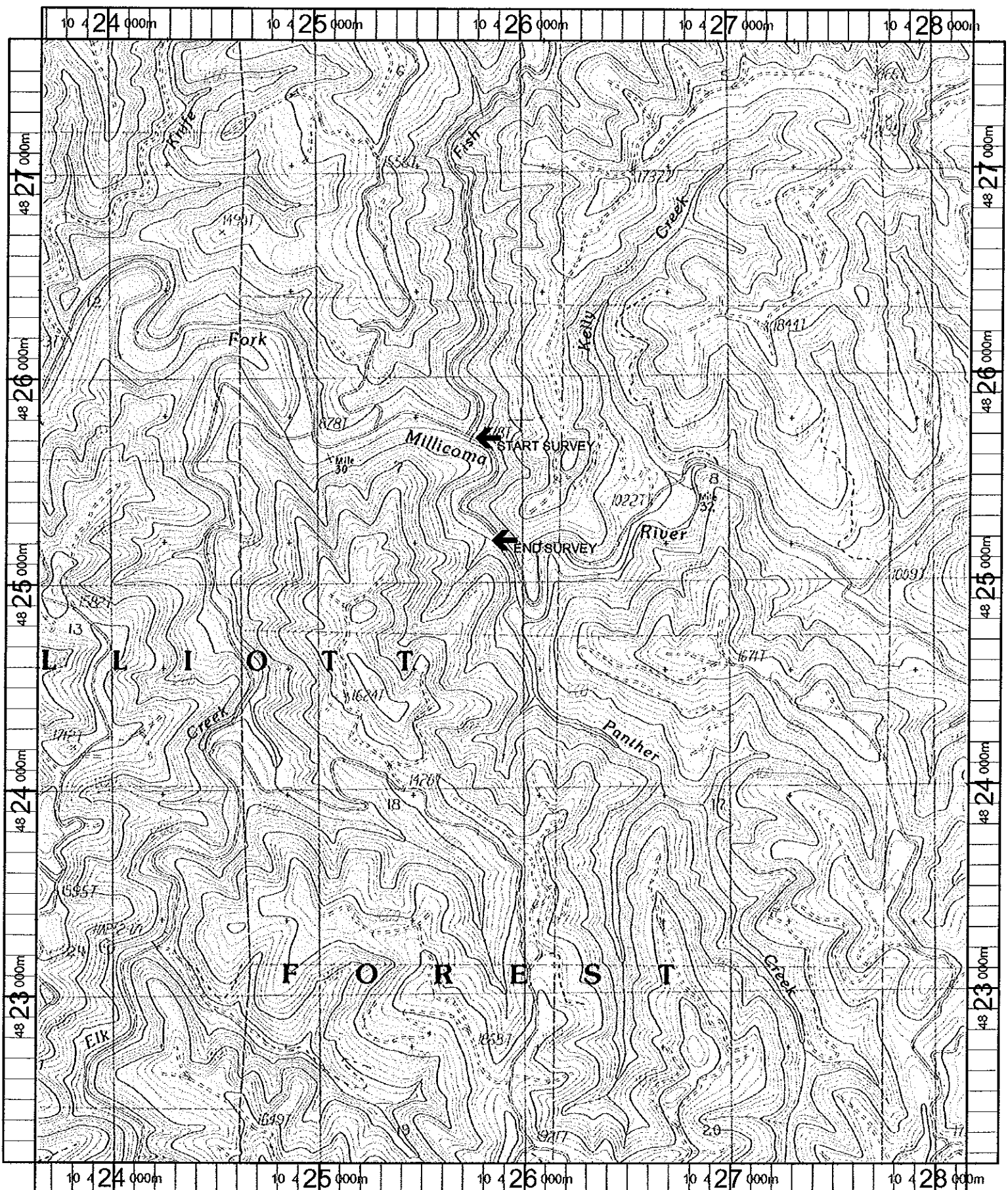
STREAM SUMMARY

WEST FORK MILLICOMA #2 (PRE-TX)

Number Units	Total Length (m)	Avg Width (m)	Avg Depth (m)	Total Area (m <sup>2</sup> )	Substrate Percent Wetted Area						Total Large Boulder
					S/O	Sand	Grvl	Cbbl	Bldr	Bdrk	
26	524	11.4	0.74	6,302	2	8	26	8	14	43	0

Wetted Area

Habitat Group	(m <sup>2</sup> )	Percent
Scour Pool	3,097	49.1
Backwater Pools	203	3.2
Glide	0	0.0
Riffle	777	12.3
Rapid	810	12.9
Cascade	1,298	20.6
Step	118	1.9
Dry	0	0.0



Name: ELK PEAK  
 Date: 10/13/100  
 Scale: 1 inch equals 2000 feet

Location: 10 425812 E 4824888 N  
 Caption: WF MILLICOMA RIVER UPPER #2  
*Millicoma Basin*