

ODFW AQUATIC INVENTORY PROJECT
OREGON PLAN FOR SALMON & WATERSHEDS
STREAM RESTORATION HABITAT REPORT

STREAM: North Fork Coquille River (MS-323)
BASIN: Coquille River
SURVEY TYPE: Pre-Tx
DATE: February 27, 2006
SURVEY CREW: Scott Venables, Seth Ring
REPORT PREPARED BY: Paul Jacobsen
BASIN AREA: km
USGS MAPS: Daniels Creek
ECOREGION: Coast Range Sedimentary

GENERAL DESCRIPTION:

The North Fork Coquille River habitat survey extended 763 meters. The channel was constrained by terraces in a broad valley floor. The average valley width index was 5.2 (range: 2.0-7.5). Land use for the reach was rural residential. The average unit gradient was 0.2 percent. Scour pools (91%) dominated stream habitat. Cobble (24%) and sand (22%) dominated stream substrate. Wood volume was very low at 6.0 m³/100m.

COMMENTS:

There were no potential barriers to upstream fish migration in the surveyed length.

The crew noted several habitat structures during the survey.

REACH 1

T26S-R11W-S28NW

REACH 1

Valley and Channel Summary

Valley Characteristics (Percent Reach Length)

<u>Narrow Valley Floor</u>		<u>Broad Valley Floor</u>	
Steep V-shape	0%	Constraining Terraces	0%
Moderate V-shape	0%	Multiple Terraces	100%
Open V-shape	0%	Wide Floodplain	0%
Valley Width Index	5.2	VWI Range:	2 - 7.5

Channel Morphology (Percent Reach Length)

<u>Constrained</u>		<u>Unconstrained</u>	
Hillslope	0%	Single Channel	0%
Bedrock	0%	Multiple Channel	0%
Terrace	100%	Braided Channel	0%
Alt. Terrace/Hill	0%		
Landuse	0%		

Channel Characteristics

<u>Type</u>	<u>Length (m)</u>	<u>Area (m2)</u>	<u>Dry Units</u>
Primary Channel	763	11,165	0
Secondary Channel	0	0	0
Off-Channel Units	72	204	0

Channel Dimensions (m)

<u>Wetted</u>	<u>Active</u>	<u>Floodprone</u> n = 3	<u>First Terrace</u> n = 3
Width: 10.3	Width: 29.6	39.6 (24.5 - 61.3)	42.9 (28.7 - 63)
Depth: 0.89	Height: 1.0	2.1 (1.8 - 2.3)	2.6 (2.2 - 3)

W:D ratio: 27.9
 Stream Flow Type: MF
 Average Unit Gradient: 0.2%
 Water temperature (°C): 9.0 - 9.0

Entrenchment (ACW:FPW ratio): 1.4
 Habitat Units/100m (total channel length): 2.2
 Habitat Units/100m (primary channel length): 2.4

Riparian, Bank, and Wood Summary

	<u>Primary</u>	<u>Secondary</u>
Land Use:	RR	
Riparian Vegetation:	D30	D15

Bank Condition and Shade

<u>Bank Status</u>	<u>Percent Reach Length</u>	<u>Shade (% of 180)</u>
Actively Eroding:		Reach avg:
Undercut Banks:		Range: -

Large Wood Debris

	<u>Total</u>	<u>Total / 100m primary channel</u>
All pieces (>=3m x 0.15m):	56	7.3
Volume (m ³):	46	6.0
Key pieces (>=12m x 0.60m):	2	0.3

OREGON DEPT OF FISH AND WILDLIFE

NF COQUILLE RIVER PRE-TX (3-MS, 323)

HABITAT INVENTORY

Report Date: 12/6/2006

Survey Date:

2/27/2006

REACH 1		T26S-R11W-S28NW					REACH 1					
HABITAT DETAIL												
Habitat Type	Number Units	Total Length (m)	Avg Width (m)	Avg Depth (m)	Total Area (m ²)	Large Boulders (#>0.5m)	Substrate Percent Wetted Area					
							S/O	Snd	Grvl	Cbl	Bldr	Bdrk
CASCADE/BOULDERS	1	15	1.1	0.05	17	0	0	5	35	60	0	0
POOL-BACKWATER	3	30	3.9	0.70	115	0	50	23	7	3	10	7
POOL-ISOLATED	1	10	1.7	0.40	16	0	52	43	5	0	0	0
POOL-LATERAL SCOUR	9	706	14.5	1.33	10,394	0	7	31	12	17	12	21
RAPID/BOULDERS	1	11	13.3	0.45	142	0	0	0	45	40	15	0
RIFFLE	3	64	9.0	0.32	685	0	0	3	37	57	3	0
Total:	18	836	10.3	0.89	11,369	0	Avg: 15	22	18	24	9	12

HABITAT SUMMARY									
Habitat Group	Number Units	Total Length (m)	Avg Width (m)	Avg Depth (m)	Wetted Area		Large Boulders		
					(m ²)	Percent	Number	(# / 100m ²)	
Dammed & BW Pools	4	40	3.3	0.63	131	1.15%	0	0.0	
Scour Pools	9	706	14.5	1.33	10,394	91.43%	0	0.0	
Glides	0	0			0	0.00%	0	0.0	
Riffles	3	64	9.0	0.32	685	6.02%	0	0.0	
Rapids	1	11	13.3	0.45	142	1.25%	0	0.0	
Cascades	1	15	1.1	0.05	17	0.15%	0	0.0	
Step/Falls	0	0			0	0.00%	0	0.0	
Dry	0	0			0	0.00%	0	0.0	
Culverts	0	0			0	0.00%	0	0.0	

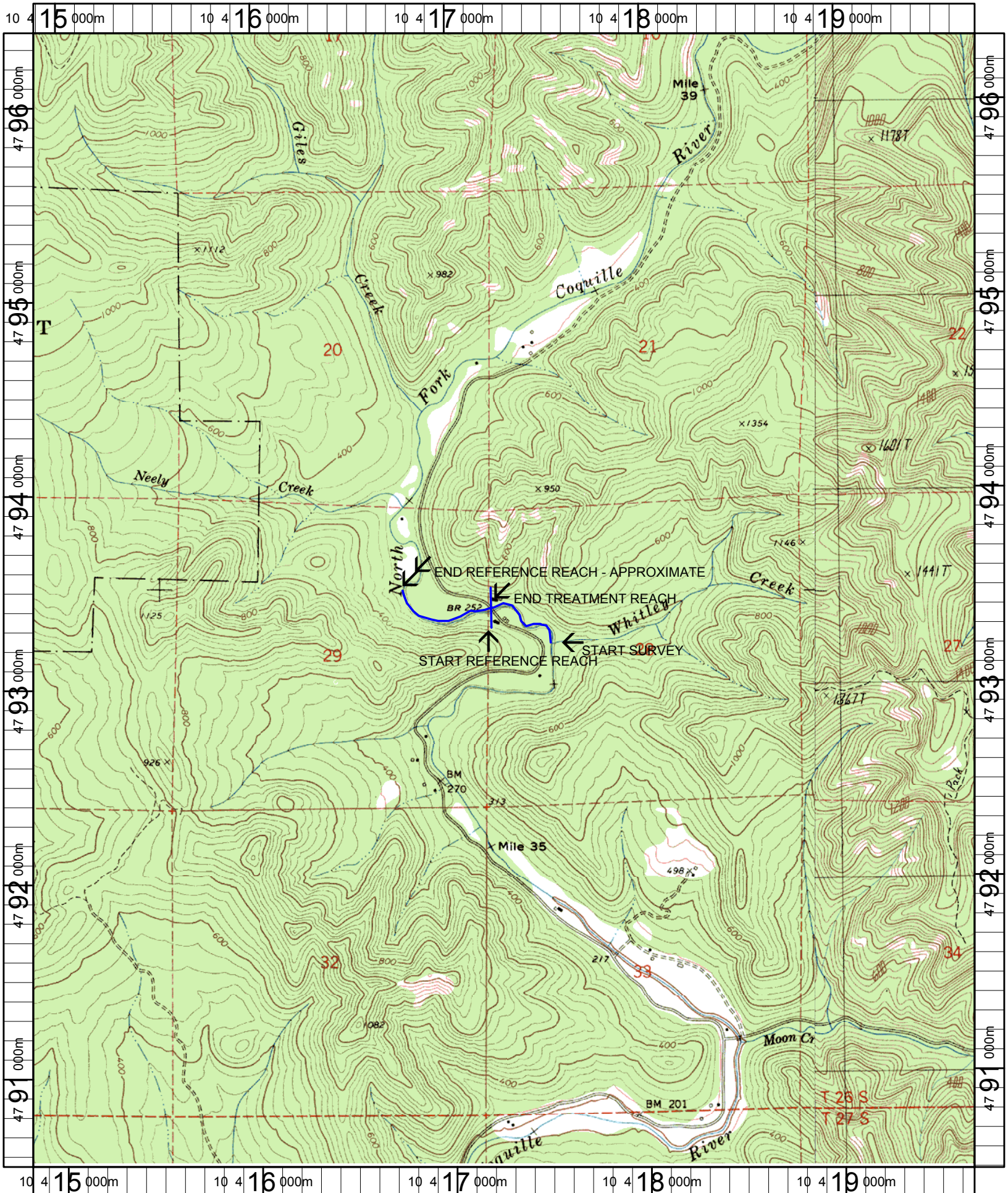
POOL SUMMARY			
	<u>Total</u>	Total of all Channel Lengths	
		<u># / Km</u>	Primary Channel Length <u># / Km</u>
All Pools:	13	15.6	17.0
Pools >=1m deep:	8	9.6	10.5
Complex pools (LWD pieces>=3):	8	9.6	10.5
Pool frequency (channel widths/pool):	2.2		
Residual pool depth (avg):	0.99		

Comment Summary

Restoration Monitoring Sites 2006

MONITORING AREA: **3-MS** SITE ID: **323** **NF COQUILLE RIVER PRE-TX**

UNIT#	TYPE	CHAN	DIST. (m)	COMMENTS	NOTE ESTIMATOR	NOTE NUMERATOR
1	LP	01	35.7	HS, /TJ	T = 9.0 AT 1:30	
2	RI	11	35.7		T = 8.5, ACW = 4.3	
3	RI	00	68.6	HS	2 LOGS	
4	LP	01	251.1	/CS		
7	RB	00	261.8		3 STEELHEAD REDDS	
10	LP	00	468.4	CS/		
11	RI	01	482	SS/		
15	LP	00	667.7		2 STEELHEAD REDDS	
16	LP	01	737.5	/TJ		
17	CB	11	737.5		ACW = 2.6	
18	LP	00	763.2	BC, CS/CS	T = 9.0 AT 3:30	



Name: DANIELS CREEK
 Date: 1/19/2006
 Scale: 1 inch equals 2000 feet

Location: 10 417273 E 4793439 N
 Caption: NF COQUILLE RESTORATION AND REFERENCE SITES - NF
 COQUILLE BASIN