

ODFW AQUATIC INVENTORY PROJECT
OREGON PLAN FOR SALMON & WATERSHEDS
STREAM RESTORATION HABITAT REPORT

STREAM: North Slough Creek Tributary (MS-293)
BASIN: Coos River
SURVEY TYPE: Post-Tx
DATE: February 14, 2005
SURVEY CREW: Jennifer Schmitt, Neil Jensen
REPORT PREPARED BY: Paul Jacobsen
BASIN AREA: 1.2 km²
USGS MAPS: Lakeside
ECOREGION: Coast Range Coastal Lowlands

GENERAL DESCRIPTION:

The North Slough Creek habitat survey extended 505 meters. The channel was constrained by terraces in a broad valley floor. The average valley width index was 5.7 (range: 1.3-11.0). Land use for the reach was second growth (15-30 cm dbh) trees. The average unit gradient was 2.2 percent. Riffles (58%) and scour pools (33%) dominated stream habitat. Gravel (56%) and sand (33%) dominated stream substrate. Wood volume was moderate at 26.2 m³/100m.

COMMENTS:

There were no potential barriers to upstream fish migration in the surveyed length.

The crew noted several habitat structures during the survey.

REACH 1 T24S-R12W-S05SE REACH 1

Valley and Channel Summary

Valley Characteristics (Percent Reach Length)

<u>Narrow Valley Floor</u>		<u>Broad Valley Floor</u>	
Steep V-shape	0%	Constraining Terraces	100%
Moderate V-shape	0%	Multiple Terraces	0%
Open V-shape	0%	Wide Floodplain	0%
Valley Width Index	5.7	VWI Range:	1.3 - 11

Channel Morphology (Percent Reach Length)

<u>Constrained</u>		<u>Unconstrained</u>	
Hillslope	0%	Single Channel	0%
Bedrock	0%	Multiple Channel	0%
Terrace	100%	Braided Channel	0%
Alt. Terrace/Hill	0%		
Landuse	0%		

Channel Characteristics

<u>Type</u>	<u>Length (m)</u>	<u>Area (m²)</u>	<u>Dry Units</u>
Primary Channel	505	945	0
Secondary Channel	0	0	0
Off-Channel Units	17	10	0

Channel Dimensions (m)

<u>Wetted</u>	<u>Active</u>	<u>Floodprone</u>	<i>n = 5</i>	<u>First Terrace</u>	<i>n = 4</i>
Width:	1.9	Width:	2.7	6.1 (3.9 - 13.9)	9.7 (4.8 - 18.3)
Depth:	0.23	Height:	0.4	0.8 (0.76 - 0.8)	1.1 (0.9 - 1.3)

W:D ratio: 6.8 Entrenchment (ACW:FPW ratio): 2.2
Stream Flow Type: HF Habitat Units/100m (total channel length): 8.8
Average Unit Gradient: 2.2% Habitat Units/100m (primary channel length): 9.1
Water temperature (°C): 7.0 - 7.0

Riparian, Bank, and Wood Summary

	<u>Primary</u>	<u>Secondary</u>
Land Use:	ST	
Riparian Vegetation:	D30	S

Bank Condition and Shade

<u>Bank Status</u>	<u>Percent Reach Length</u>	<u>Shade (% of 180)</u>
Actively Eroding:		Reach avg:
Undercut Banks:		Range: -

Large Wood Debris

	<u>Total</u>	<u>Total / 100m primary channel</u>
All pieces (>=3m x 0.15m):	103	20.4
Volume (m ³):	132	26.2
Key pieces (>=12m x 0.60m):	1	0.2

OREGON DEPT OF FISH AND WILDLIFE NORTH SLOUGH CREEK TRIB POST-TX (3-MS, 293)

HABITAT INVENTORY

Report Date: 11/29/2005

Survey Date:

2/14/2005

REACH 1		T24S-R12W-S05SE					REACH 1					
HABITAT DETAIL												
Habitat Type	Number Units	Total Length (m)	Avg Width (m)	Avg Depth (m)	Total Area (m ²)	Large Boulders (#>0.5m)	Substrate Percent Wetted Area					
							S/O	Snd	Grvl	Cbl	Bldr	Bdrk
CASCADE/BEDROCK	1	10	0.6	0.03	6	0	1	15	5	0	0	79
CASCADE/BOULDERS	4	39	1.5	0.11	62	0	2	22	73	3	0	0
POOL-LATERAL SCOUR	15	147	2.1	0.38	305	0	10	61	26	2	0	0
POOL-PLUNGE	2	3	3.3	0.45	11	0	0	10	90	0	0	0
RIFFLE	13	183	1.8	0.16	312	0	1	16	79	3	0	2
RIFFLE W/ POCKETS	5	129	1.9	0.14	238	0	3	26	67	3	0	1
STEP/BEDROCK	1	2	0.9	0.15	2	0	0	0	0	0	0	100
STEP/COBBLE	3	9	2.0	0.07	17	0	0	6	90	4	0	0
STEP/LOG	1	0	2.4	0.03	1	0	0	80	20	0	0	0
STEP/STRUCTURE	1	0	1.2	0.08	0	0	0	60	40	0	0	0
Total:	46	522	1.9	0.23	954	0	Avg: 4	33	56	3	0	4

HABITAT SUMMARY									
Habitat Group	Number Units	Total Length (m)	Avg Width (m)	Avg Depth (m)	Wetted Area		Large Boulders		
					(m ²)	Percent	Number	(# / 100m ²)	
Dammed & BW Pools	0	0			0	0.00%	0	0.0	
Scour Pools	17	150	2.2	0.39	316	33.14%	0	0.0	
Glides	0	0			0	0.00%	0	0.0	
Riffles	18	313	1.8	0.16	550	57.60%	0	0.0	
Rapids	0	0			0	0.00%	0	0.0	
Cascades	5	48	1.3	0.09	68	7.11%	0	0.0	
Step/Falls	6	11	1.8	0.08	21	2.15%	0	0.0	
Dry	0	0			0	0.00%	0	0.0	
Culverts	0	0			0	0.00%	0	0.0	

POOL SUMMARY			
	<u>Total</u>	Total of all Channel Lengths	
		<u># / Km</u>	Primary Channel Length <u># / Km</u>
All Pools:	17	32.6	33.7
Pools >=1m deep:	0	0.0	0.0
Complex pools (LWD pieces>=3):	3	5.7	5.9
Pool frequency (channel widths/pool):	11.5		
Residual pool depth (avg):	0.30		

Comment Summary

Restoration Monitoring Sites 2005

MONITORING AREA: **3-MS** SITE ID: **293** NORTH SLOUGH CREEK TRIB POST-

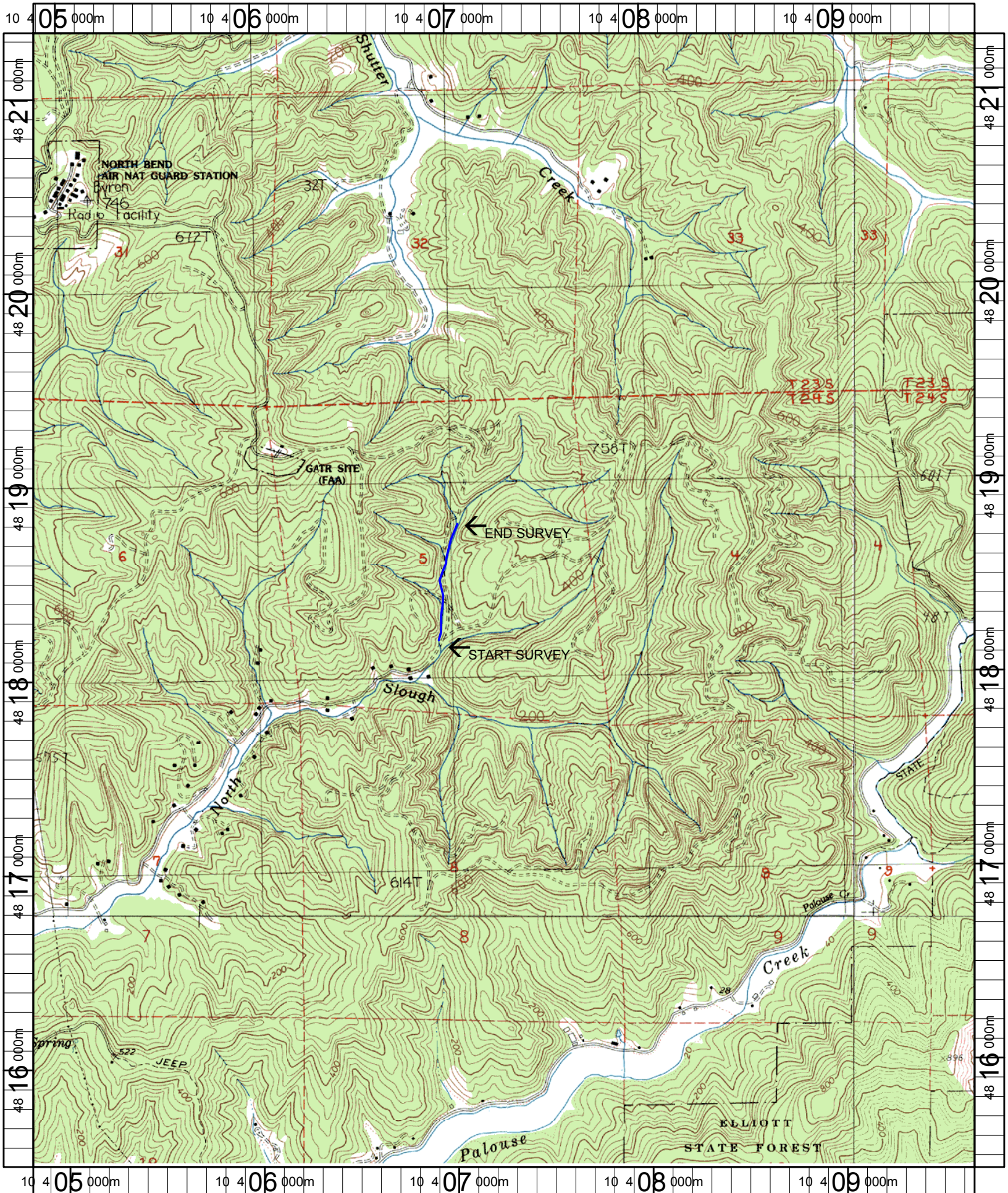
UNIT#	TYPE	CHAN	DIST. (m)	COMMENTS	NOTE ESTIMATOR	NOTE NUMERATOR
8	LP	00	55	DJ, HS		
10	LP	00	83.7	WL	STEELHEAD DEER	
12	RI	00	122	DJ, HS		
13	RP	00	145.9	/SS, DJ,HS		
14	CB	00	157	DJ		
15	RP	00	191.1	SS/		
18	LP	01	207.7	TJ/		
22	PP	00	235.2	HS, WL	STEELHEAD	
23	SS	00	235.4		H = 0.2, 8x8 DAM	
25	RP	00	287.8	HS		
26	RI	00	325.9	/SS, DJ,HS		
28	RI	00	337.2	HS		
29	LP	00	346	HS		
31	PP	00	354.2	/SS		
32	SL	00	354.55		H = 0.45	
33	LP	00	362.55	/SS		
39	LP	00	409.15	DJ, HS		
40	SR	00	411.45		BEDROCK = HARDPAN	
41	LP	00	434.25	DJ		
42	RI	00	448.35	DJ, HS		
44	RI	01	489.05	SS/TJ	3 SEEPS	

Comment Summary

Restoration Monitoring Sites 2005

MONITORING AREA: 3-MS SITE ID: 293 NORTH SLOUGH CREEK TRIB POST-

<u>UNIT#</u>	<u>TYPE</u>	<u>CHAN</u>	<u>DIST. (m)</u>	<u>COMMENTS</u>	<u>NOTE ESTIMATOR</u>	<u>NOTE NUMERATOR</u>
45	CB	11	489.05		ACW=1.0, DRY FARTHER UP TRIB	



Name: LAKESIDE
 Date: 1/6/2005
 Scale: 1 inch equals 2000 feet

Location: 10 407269 E 4818390 N
 Caption: NORTH SLOUGH TRIBUTARY RESTORATION SITE - COOS BASIN