

**ODFW AQUATIC INVENTORY PROJECT**  
**OREGON PLAN FOR SALMON & WATERSHEDS**  
**STREAM RESTORATION HABITAT REPORT**

STREAM: Dement Creek (MS-282)  
BASIN: Coquille River  
SURVEY TYPE: Reference  
DATE: February 15, 2005  
SURVEY CREW: Neil Jensen, Jenni Schmitt  
REPORT PREPARED BY: Paul Jacobsen  
BASIN AREA: 37.3 km<sup>2</sup>  
USGS MAPS: Dement Creek  
ECOREGION: Southern Oregon Coastal Mountains

**GENERAL DESCRIPTION:**

The Dement Creek habitat survey extended 505 meters. The channel was constrained by hillslopes in a moderate V-shaped valley. The average valley width index was 1.7 (range: 1.3-2.1). Land use for the reach was timber harvest and second growth (15-30 cm dbh) trees. The average unit gradient was 1.9 percent. Scour pools (42%) and rapids (34%) dominated stream habitat. Bedrock (27%), cobble (19%) and gravel (19%) dominated stream substrate. Wood volume was low at 6.1 m<sup>3</sup>/100m.

REACH 1

T30S-R13W-S25NW

REACH 1

**Valley and Channel Summary**

Valley Characteristics (Percent Reach Length)

<u>Narrow Valley Floor</u>		<u>Broad Valley Floor</u>	
Steep V-shape	0%	Constraining Terraces	0%
Moderate V-shape	100%	Multiple Terraces	0%
Open V-shape	0%	Wide Floodplain	0%
Valley Width Index	1.7	VWI Range:	1.3 - 2.1

Channel Morphology (Percent Reach Length)

<u>Constrained</u>		<u>Unconstrained</u>	
Hillslope	100%	Single Channel	0%
Bedrock	0%	Multiple Channel	0%
Terrace	0%	Braided Channel	0%
Alt. Terrace/Hill	0%		
Landuse	0%		

Channel Characteristics

<u>Type</u>	<u>Length (m)</u>	<u>Area (m2)</u>	<u>Dry Units</u>
Primary Channel	505	2,215	0
Secondary Channel	0	0	0
Off-Channel Units	16	30	0

Channel Dimensions (m)

<u>Wetted</u>	<u>Active</u>	<u>Floodprone</u> n = 5	<u>First Terrace</u> n = 2
Width: 4.1	Width: 9.1	12.9 ( 9.2 - 14.6 )	15.3 ( 14.9 - 15.6 )
Depth: 0.43	Height: 0.4	0.9 ( 0.8 - 0.96 )	1.2 ( 1.04 - 1.26 )

W:D ratio: 20.8  
 Stream Flow Type: MF  
 Average Unit Gradient: 1.9%  
 Water temperature (°C): 5.0 - 5.0

Entrenchment (ACW:FPW ratio): 1.4  
 Habitat Units/100m (total channel length): 5.2  
 Habitat Units/100m (primary channel length): 5.4

**Riparian, Bank, and Wood Summary**

	<u>Primary</u>	<u>Secondary</u>
Land Use:	TH	ST
Riparian Vegetation:	D30	G

Bank Condition and Shade

<u>Bank Status</u>	<u>Percent Reach Length</u>	<u>Shade (% of 180)</u>
Actively Eroding:		Reach avg:
Undercut Banks:		Range: -

Large Wood Debris

	<u>Total</u>	<u>Total / 100m primary channel</u>
All pieces (>=3m x 0.15m):	57	11.3
Volume (m <sup>3</sup> ):	31	6.1
Key pieces (>=12m x 0.60m):	0	0.0

OREGON DEPT OF FISH AND WILDLIFE

DEMENT CREEK REFERENCE (3-MS, 282)

HABITAT INVENTORY

Report Date: 11/29/2005

Survey Date:

2/15/2005

REACH 1		T30S-R13W-S25NW					REACH 1					
HABITAT DETAIL												
Habitat Type	Number Units	Total Length (m)	Avg Width (m)	Avg Depth (m)	Total Area (m <sup>2</sup> )	Large Boulders (#>0.5m)	Substrate Percent Wetted Area					
							S/O	Snd	Grvl	Cbl	Bldr	Bdrk
CASCADE/BEDROCK	2	58	4.2	0.34	246	0	0	1	3	5	5	85
POOL-LATERAL SCOUR	10	197	4.4	0.77	892	0	9	37	14	2	3	36
POOL-STRAIGHT SCOUR	1	13	4.2	1.00	55	0	1	10	29	1	0	59
RAPID/BEDROCK	1	19	3.0	0.20	58	0	0	0	1	5	15	79
RAPID/BOULDERS	7	157	4.2	0.14	708	0	0	4	21	34	33	8
RIFFLE	3	56	3.5	0.20	199	0	1	6	54	26	10	3
STEP/COBBLE	3	21	4.2	0.12	89	0	0	1	13	54	31	0
<b>Total:</b>	<b>27</b>	<b>521</b>	<b>4.1</b>	<b>0.43</b>	<b>2,245</b>	<b>0</b>	<b>Avg: 3</b>	<b>16</b>	<b>19</b>	<b>19</b>	<b>15</b>	<b>27</b>

HABITAT SUMMARY									
Habitat Group	Number Units	Total Length (m)	Avg Width (m)	Avg Depth (m)	Wetted Area		Large Boulders		
					(m <sup>2</sup> )	Percent	Number	(# / 100m <sup>2</sup> )	
Dammed & BW Pools	0	0			0	0.00%	0	0.0	
Scour Pools	11	210	4.4	0.79	946	42.16%	0	0.0	
Glides	0	0			0	0.00%	0	0.0	
Riffles	3	56	3.5	0.20	199	8.86%	0	0.0	
Rapids	8	176	4.0	0.14	765	34.10%	0	0.0	
Cascades	2	58	4.2	0.34	246	10.94%	0	0.0	
Step/Falls	3	21	4.2	0.12	89	3.94%	0	0.0	
Dry	0	0			0	0.00%	0	0.0	
Culverts	0	0			0	0.00%	0	0.0	

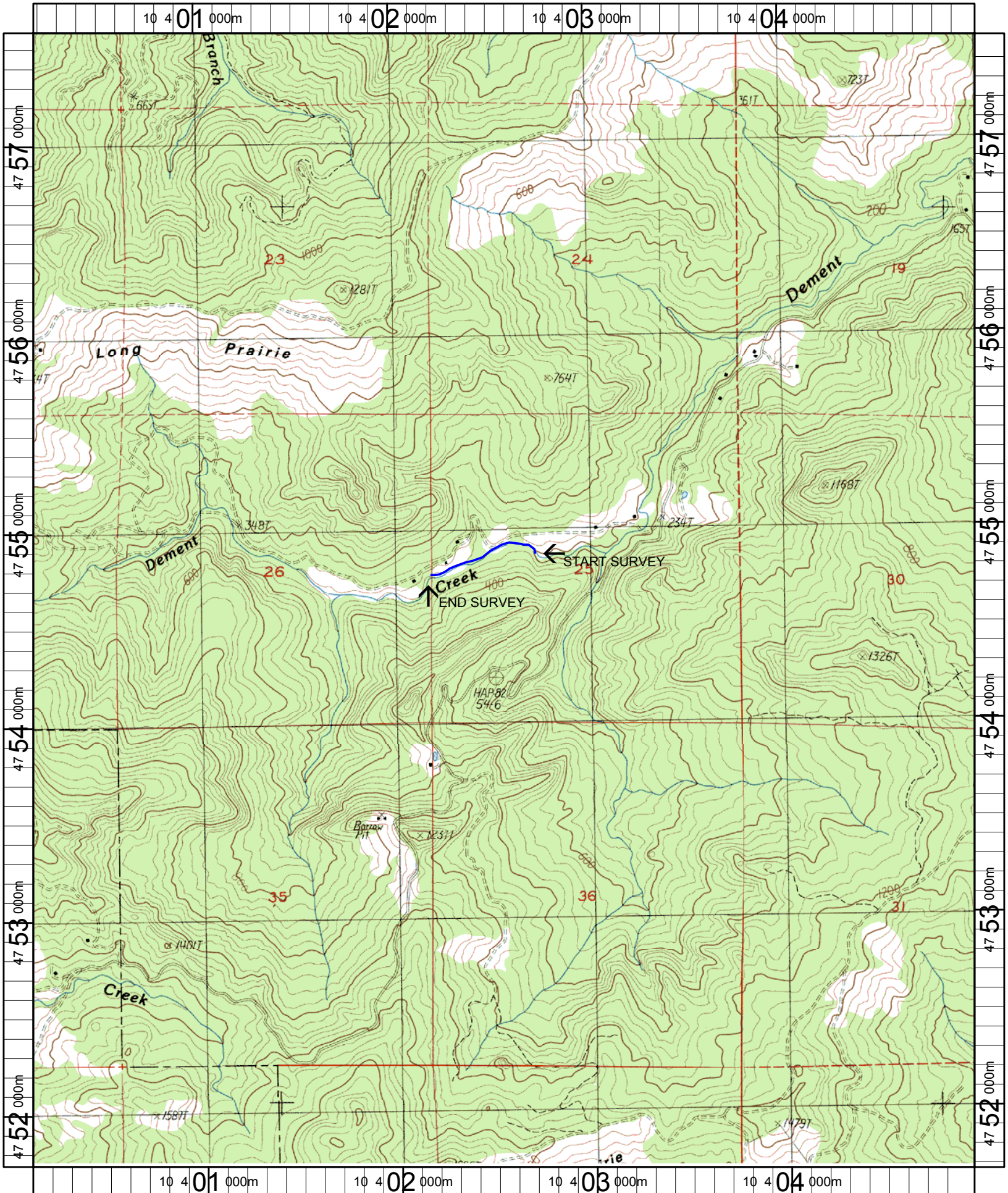
POOL SUMMARY			
	Total	Total of all Channel Lengths # / Km	Primary Channel Length # / Km
All Pools:	11	21.1	21.8
Pools >=1m deep:	2	3.8	4.0
Complex pools (LWD pieces>=3):	4	7.7	7.9
Pool frequency (channel widths/pool):	5.2		
Residual pool depth (avg):	0.57		

# Comment Summary

## Restoration Monitoring Sites 2005

MONITORING AREA: **3-MS**      SITE ID: **282**      **DEMENT CREEK REFERENCE**

UNIT#	TYPE	CHAN	DIST. (m)	COMMENTS	NOTE ESTIMATOR	NOTE NUMERATOR
1	LP	00	22	SS/		
2	SC	00	29.6	SS/		
6	SP	00	116.4	/SS		
8	LP	00	173.9	SS/		
10	LP	00	192.2		SPAWNING SURVEY SIGN	
12	LP	00	242.1	/SS		
17	RI	00	333.6	LI/, SS/		
19	LP	00	368.8		READ AT POOL TAILOUT	
20	LP	00	387.9		1.0 M STEP BETWEEN POOLS	
21	RR	00	407.1	/SS		
23	RB	01	461.5	/TJ		
24	RB	11	461.5	DJ		
26	LP	00	489.1	/SS		



Name: DEMENT CREEK  
Date: 1/6/2005  
Scale: 1 inch equals 2000 feet

Location: 10 402558 E 4754630 N  
Caption: DEMENT CREEK REFERENCE SITE - COQUILLE BASIN