

ODFW AQUATIC INVENTORY PROJECT
OREGON PLAN FOR SALMON & WATERSHEDS
STREAM RESTORATION HABITAT REPORT

STREAM: Fall Creek Tributary B (MS-277)
BASIN: Coos River
SURVEY TYPE: Post-Tx
DATE: February 17, 2005
SURVEY CREW: Jennifer Schmitt, Neil Jensen
REPORT PREPARED BY: Paul Jacobsen
BASIN AREA: 6.9 km²
USGS MAPS: Tioga
ECOREGION: Coast Range Sedimentary

GENERAL DESCRIPTION:

The Fall Creek Tributary B habitat survey extended 1,411 meters. The channel was constrained by terraces in a broad valley floor. The average valley width index was 4.4 (range: 2.1-10.0). Land use for the reach was second growth (15-30 cm dbh) and large (30-50 cm dbh) trees. The average unit gradient was 3.4 percent. Cascades (43%) and scour pools (34%) dominated stream habitat. Gravel (44%) and sand (32%) dominated stream substrate. Wood volume was high at 31.9 m³/100m.

COMMENTS:

There were no potential barriers to upstream fish migration in the surveyed length.

The crew noted several habitat structures during the survey.

REACH 1

T25S-R09W-S20SW

REACH 1

Valley and Channel Summary

Valley Characteristics (Percent Reach Length)

<u>Narrow Valley Floor</u>		<u>Broad Valley Floor</u>	
Steep V-shape	0%	Constraining Terraces	100%
Moderate V-shape	0%	Multiple Terraces	0%
Open V-shape	0%	Wide Floodplain	0%
Valley Width Index	4.4	VWI Range:	2.1 - 10

Channel Morphology (Percent Reach Length)

<u>Constrained</u>		<u>Unconstrained</u>	
Hillslope	0%	Single Channel	0%
Bedrock	0%	Multiple Channel	0%
Terrace	100%	Braided Channel	0%
Alt. Terrace/Hill	0%		
Landuse	0%		

Channel Characteristics

<u>Type</u>	<u>Length (m)</u>	<u>Area (m2)</u>	<u>Dry Units</u>
Primary Channel	1,411	4,156	0
Secondary Channel	0	0	0
Off-Channel Units	45	119	0

Channel Dimensions (m)

<u>Wetted</u>	<u>Active</u>	<u>Floodprone</u> n = 6	<u>First Terrace</u> n = 6
Width: 3.0	Width: 6.8	15.8 (9.1 - 27.4)	18.7 (9.4 - 32.1)
Depth: 0.33	Height: 0.5	1.1 (0.92 - 1.2)	2.6 (1.1 - 7.3)

W:D ratio: 12.6

Entrenchment (ACW:FPW ratio): 2.4

Stream Flow Type: LF

Habitat Units/100m (total channel length): 6.8

Average Unit Gradient: 3.4%

Habitat Units/100m (primary channel length): 7.0

Water temperature (°C): 4.0 - 4.0

Riparian, Bank, and Wood Summary

	<u>Primary</u>	<u>Secondary</u>
Land Use:	ST	LT
Riparian Vegetation:	C30	G

Bank Condition and Shade

<u>Bank Status</u>	<u>Percent Reach Length</u>	<u>Shade (% of 180)</u>
Actively Eroding:		Reach avg:
Undercut Banks:		Range: -

Large Wood Debris

	<u>Total</u>	<u>Total / 100m primary channel</u>
All pieces (>=3m x 0.15m):	662	46.9
Volume (m ³):	450	31.9
Key pieces (>=12m x 0.60m):	8	0.6

OREGON DEPT OF FISH AND WILDLIFE

FALL CR TRIBUTARY B POST-TX (3-MS, 277)

HABITAT INVENTORY

Report Date: 11/29/2005

Survey Date:

2/17/2005

REACH 1

T25S-R09W-S20SW

REACH 1

HABITAT DETAIL

Habitat Type	Number Units	Total Length (m)	Avg Width (m)	Avg Depth (m)	Total Area (m ²)	Large Boulders (#>0.5m)	Substrate Percent Wetted Area					
							S/O	Snd	Grvl	Cbl	Bldr	Bdrk
							CASCADE/BEDROCK	4	86	2.7	0.16	239
CASCADE/BOULDERS	28	637	2.5	0.16	1,583	0	4	18	54	16	7	1
CULVERT CROSSING	1	13	1.2	0.20	16	0	0	11	89	0	0	0
POOL-BACKWATER	3	9	2.1	0.37	19	0	17	73	9	2	0	0
POOL-LATERAL SCOUR	30	335	3.9	0.61	1,314	0	11	54	30	2	2	2
POOL-PLUNGE	7	35	3.5	0.66	123	0	9	46	26	3	10	6
POOL-STRAIGHT SCOUR	1	8	3.6	0.40	29	0	9	27	9	5	5	45
RAPID/BEDROCK	1	16	2.5	0.20	41	0	0	5	5	5	10	76
RAPID/BOULDERS	4	83	2.9	0.11	254	0	2	6	70	16	6	0
RIFFLE	1	16	2.7	0.15	44	0	2	10	83	5	0	0
RIFFLE W/ POCKETS	7	187	2.6	0.17	533	0	4	32	62	0	0	2
STEP/BEDROCK	1	4	6.2	0.01	24	0	0	0	0	0	0	100
STEP/BOULDERS	1	2	3.2	0.05	6	0	0	5	70	15	10	0
STEP/COBBLE	3	19	2.4	0.12	44	0	2	10	84	3	0	0
STEP/LOG	6	4	2.2	0.11	7	0	1	19	67	13	0	0
STEP/STRUCTURE	1	1	1.0	0.15	1	0	0	10	50	0	40	0
Total:	99	1,455	3.0	0.33	4,275	0	Avg: 6	32	44	8	4	6

HABITAT SUMMARY

Habitat Group	Number Units	Total Length (m)	Avg Width (m)	Avg Depth (m)	Wetted Area		Large Boulders	
					(m ²)	Percent	Number	(# / 100m ²)
Dammed & BW Pools	3	9	2.1	0.37	19	0.44%	0	0.0
Scour Pools	38	378	3.8	0.62	1,465	34.27%	0	0.0
Glides	0	0			0	0.00%	0	0.0
Riffles	8	204	2.6	0.17	577	13.50%	0	0.0
Rapids	5	99	2.8	0.13	294	6.88%	0	0.0
Cascades	32	723	2.6	0.16	1,822	42.62%	0	0.0
Step/Falls	12	30	2.5	0.10	83	1.93%	0	0.0
Dry	0	0			0	0.00%	0	0.0
Culverts	1	13	1.2	0.20	16	0.37%	0	0.0

REACH 1

T25S-R09W-S20SW

REACH 1

POOL SUMMARY

	<u>Total</u>	Total of all Channel Lengths <u># / Km</u>	Primary Channel Length <u># / Km</u>
All Pools:	41	28.2	29.1
Pools >=1m deep:	1	0.7	0.7
Complex pools (LWD pieces>=3):	22	15.1	15.6
Pool frequency (channel widths/pool):	5.2		
Residual pool depth (avg):	0.48		

Comment Summary

Restoration Monitoring Sites 2005

MONITORING AREA: **3-MS** SITE ID: **277** **FALL CR TRIBUTARY B POST-TX**

UNIT#	TYPE	CHAN	DIST. (m)	COMMENTS	NOTE ESTIMATOR	NOTE NUMERATOR
3	LP	00	35	HS	CT, CT D30, G, ST, PLACED WOOD	
4	LP	00	56.1		SMALL RIF BTW POOLS	
6	PP	00	63.3	HS	PLACED LOGS	
7	CB	00	90.3	HS	PLACED LOGS	
9	LP	00	112.3		SMALL RIF BTW POOLS	
10	LP	00	127.2	BC	PIECES OF OLD CULVERT IN POOL	
15	CB	00	269.6	WL	ELK TRACKS	
16	LP	00	277.1	HS	PLACED LOGS	
17	CB	00	297.1	HS	BEDROCK=HARDPAN	
19	LP	00	326.2	HS DJ WL	CH, MV D30, G, ST SALMONID FRY	
21	LP	00	374.8	HS DJ	PLACED WOOD	
22	SR	00	378.7		H=0.8m	
23	CR	01	405	/TJ		
24	RB	11	405		ACH=0.44m ACW=3.7	
25	CB	00	423.1		BEDROCK IS HARDPAN	
27	SS	00	427.65		H=0.4m	
28	CC	00	440.95	CC	2.2 x 2.2 METAL CULVERT	
31	CB	00	485.95	WL HS	ELK TRACKS	
32	CB	00	506.45	HS		
33	LP	00	514.45	HS		
36	SL	00	541		H=0.2m	

Comment Summary

Restoration Monitoring Sites 2005

MONITORING AREA: **3-MS** SITE ID: **277** FALL CR TRIBUTARY B POST-TX

UNIT#	TYPE	CHAN	DIST. (m)	COMMENTS	NOTE ESTIMATOR	NOTE NUMERATOR
37	CB	01	572.2	HS		
39	LP	00	586.2	WL	REDD AT PTC	
41	LP	00	605.4	WL	STEELHEAD SMOLT	
42	CB	00	628.4	WL	ELK TRACKS	
43	LP	00	634.4	DJ		
44	RB	00	665	WL	TRAIL	
45	LP	00	674.5		CT, CT D15, D30 ST	
46	RP	00	686	WL	STEELHEAD SMOLT	
48	LP	00	728.5	/SS WL	ELK TRACKS	
49	CB	00	765.6	/SS		
50	LP	00	777.2	DJ/LA		
52	LP	00	797.9	LS/DJ		
53	CB	00	845.5	WL LS/	DEER TRACKS	
54	LP	00	855	WL	TRAIL	
56	LP	00	865.9	WL/LS DJ	STEELHEAD SMOLT	
57	RP	00	879.5	/SS WL		
59	RP	00	907.8	SS/	BEDROCK IS HARDPAN	
60	CB	00	926.9		CA, CT D30, D15 ST	
61	LP	00	938.4	WL	CUTTHROAT TROUT	
63	LP	00	955.7	/LA	2m x 1m	
64	CB	00	968.6	WL	REDD, SCULPIN	

Comment Summary

Restoration Monitoring Sites 2005

MONITORING AREA: **3-MS** SITE ID: **277** **FALL CR TRIBUTARY B POST-TX**

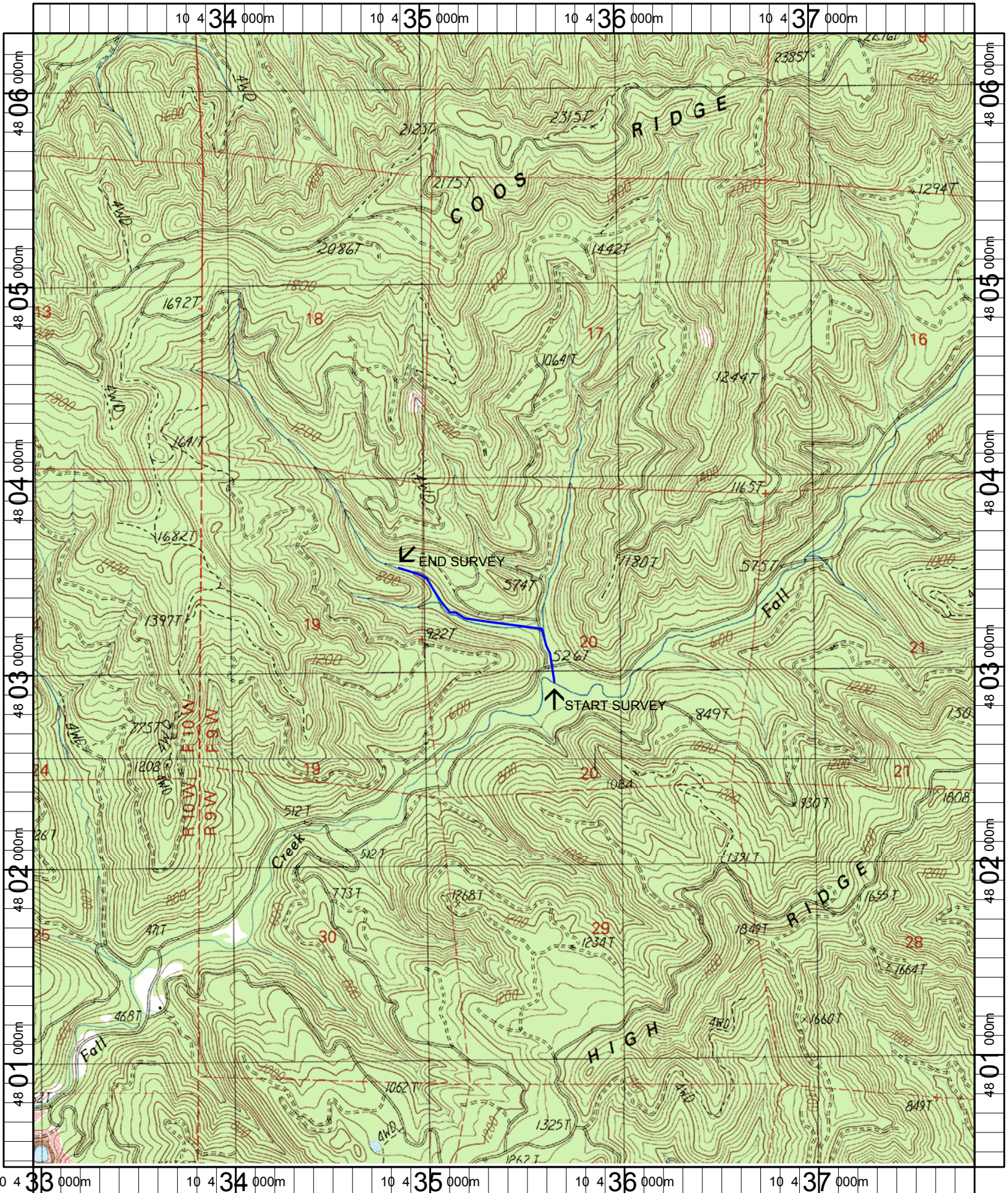
UNIT#	TYPE	CHAN	DIST. (m)	COMMENTS	NOTE ESTIMATOR	NOTE NUMERATOR
65	LP	00	978.1	WL/SS	REDD	
66	RB	01	991.5	LS/		
69	CR	00	1033	SS/		
71	PP	00	1052.8		1m SB BTW POOLS	
72	SL	00	1053.05		H=0.35m	
74	LP	00	1069.75	/SS		
75	SB	00	1071.75	/SS		
76	PP	00	1077.55	/SS		
77	SL	00	1079		H=0.95m	
78	CB	00	1115.6	WL	REDD	
79	CB	01	1126.4	WL, TJ/	REDD	
80	CB	11	1126.4	DJ WL	ACH=0.3m ACW=4.1 DEER TRACKS	
83	BW	10	1155.7		ALGAL BLOOMS	
85	CB	00	1174.5		CA, CT D15, G ST, LT	
88	PP	00	1216.6	/SS		
89	SL	00	1217.8		H=1.05	
91	CB	00	1269.2	DJ/LI	15m x 15m	
93	CB	00	1326.2	HSDJ LA/SS	15m x 15m	
94	LP	00	1333.2	LA/	4m x 2m	
96	PP	00	1352	LS/HS		
97	SL	00	1352.6		H=0.85m	

Comment Summary

Restoration Monitoring Sites 2005

MONITORING AREA: 3-MS SITE ID: 277 FALL CR TRIBUTARY B POST-TX

<u>UNIT#</u>	<u>TYPE</u>	<u>CHAN</u>	<u>DIST. (m)</u>	<u>COMMENTS</u>	<u>NOTE ESTIMATOR</u>	<u>NOTE NUMERATOR</u>
99	CB	00	1410.5	HS	CH, MV C30, G ST, LT	



Name: IVERS PEAK
 Date: 1/6/2005
 Scale: 1 inch equals 2000 feet

Location: 10 435407 E 4803367 N
 Caption: FALL CREEK TRIBUTARY B RESTORATION SITE - COOS BASIN