

ODFW AQUATIC INVENTORY PROJECT
OREGON PLAN FOR SALMON & WATERSHEDS
STREAM RESTORATION HABITAT REPORT

STREAM: Fall Creek Tributary A (MS-276)
BASIN: Coos River
SURVEY TYPE: Post-Tx
DATE: February 22, 2005
SURVEY CREW: Jennifer Schmitt, Neil Jensen
REPORT PREPARED BY: Paul Jacobsen
BASIN AREA: 6.9 km²
USGS MAPS: Tioga
ECOREGION: Coast Range Sedimentary

GENERAL DESCRIPTION:

The Fall Creek Tributary A habitat survey extended 1,319 meters. The channel was constrained by terraces in a broad valley floor. The average valley width index was 4.2 (range: 2.1-7.0). Land use for the reach was second growth (15-30 cm dbh) and large (50-90 cm dbh) trees. The average unit gradient was 5.3 percent. Cascades (49%) and scour pools (21%) dominated stream habitat. Gravel (65%) dominated stream substrate. Wood volume was moderate at 25.2 m³/100m.

COMMENTS:

There were no potential barriers to upstream fish migration in the surveyed length.

The crew noted several habitat structures during the survey.

REACH 1

T25S-R10W-S25SE

REACH 1

Valley and Channel Summary

Valley Characteristics (Percent Reach Length)

<u>Narrow Valley Floor</u>		<u>Broad Valley Floor</u>	
Steep V-shape	0%	Constraining Terraces	100%
Moderate V-shape	0%	Multiple Terraces	0%
Open V-shape	0%	Wide Floodplain	0%
Valley Width Index	4.2	VWI Range:	2.1 - 7

Channel Morphology (Percent Reach Length)

<u>Constrained</u>		<u>Unconstrained</u>	
Hillslope	0%	Single Channel	0%
Bedrock	0%	Multiple Channel	0%
Terrace	100%	Braided Channel	0%
Alt. Terrace/Hill	0%		
Landuse	0%		

Channel Characteristics

<u>Type</u>	<u>Length (m)</u>	<u>Area (m2)</u>	<u>Dry Units</u>
Primary Channel	1,319	2,821	0
Secondary Channel	0	0	0
Off-Channel Units	34	84	0

Channel Dimensions (m)

<u>Wetted</u>	<u>Active</u>	<u>Floodprone</u> n = 7	<u>First Terrace</u> n = 4
Width: 2.2	Width: 4.8	9.3 (5.2 - 19.2)	9.5 (6.4 - 16.1)
Depth: 0.25	Height: 0.5	1.0 (0.9 - 1.1)	2.0 (1.4 - 2.8)

W:D ratio: 9.7
 Stream Flow Type: LF
 Average Unit Gradient: 5.3%
 Water temperature (°C): 6.0 - 6.0

Entrenchment (ACW:FPW ratio): 1.9
 Habitat Units/100m (total channel length): 6.2
 Habitat Units/100m (primary channel length): 6.4

Riparian, Bank, and Wood Summary

	<u>Primary</u>	<u>Secondary</u>
Land Use:	ST	LT
Riparian Vegetation:	D15	D30

Bank Condition and Shade

<u>Bank Status</u>	<u>Percent Reach Length</u>	<u>Shade (% of 180)</u>
Actively Eroding:		Reach avg:
Undercut Banks:		Range: -

Large Wood Debris

	<u>Total</u>	<u>Total / 100m primary channel</u>
All pieces (>=3m x 0.15m):	238	18.0
Volume (m ³):	333	25.2
Key pieces (>=12m x 0.60m):	16	1.2

OREGON DEPT OF FISH AND WILDLIFE FALL CREEK TRIBUTARY A POST-TX (3-MS, 276)

HABITAT INVENTORY Report Date: 11/29/2005 Survey Date: 2/22/2005

REACH 1		T25S-R10W-S25SE					REACH 1					
HABITAT DETAIL												
Habitat Type	Number Units	Total Length (m)	Avg Width (m)	Avg Depth (m)	Total Area (m ²)	Large Boulders (#>0.5m)	Substrate Percent Wetted Area					
							S/O	Snd	Grvl	Cbl	Bldr	Bdrk
CASCADE/BOULDERS	28	781	1.8	0.12	1,413	0	3	2	69	15	9	1
CULVERT CROSSING	1	22	0.9	0.10	19	0	0	0	5	0	0	95
POOL-BACKWATER	3	8	1.3	0.33	10	0	24	65	10	0	0	2
POOL-DAMMED	1	6	4.2	0.40	26	0	5	5	84	5	0	0
POOL-LATERAL SCOUR	18	180	2.6	0.42	518	0	8	13	69	4	1	6
POOL-PLUNGE	7	29	3.0	0.79	85	0	12	8	69	3	4	4
POOL-STRAIGHT SCOUR	1	8	1.7	0.30	13	0	11	0	53	5	0	32
RAPID/BEDROCK	3	49	1.9	0.17	131	0	2	0	28	7	0	64
RAPID/BOULDERS	8	148	3.5	0.11	385	0	2	2	78	13	4	1
RIFFLE	5	94	2.1	0.11	200	0	7	12	69	8	1	3
RIFFLE W/ POCKETS	1	18	4.8	0.20	86	0	5	11	68	11	0	5
STEP/BEDROCK	2	1	0.6	0.05	0	0	0	0	3	0	10	88
STEP/COBBLE	3	7	1.8	0.09	15	0	0	7	85	9	0	0
STEP/LOG	3	4	0.7	0.07	2	0	0	0	87	7	7	0
Total:	84	1,353	2.2	0.25	2,905	0	Avg: 6	8	65	9	5	8

HABITAT SUMMARY									
Habitat Group	Number Units	Total Length (m)	Avg Width (m)	Avg Depth (m)	Wetted Area		Large Boulders		
					(m ²)	Percent	Number	(# / 100m ²)	
Dammed & BW Pools	4	14	2.0	0.35	36	1.24%	0	0.0	
Scour Pools	26	216	2.7	0.51	616	21.21%	0	0.0	
Glides	0	0			0	0.00%	0	0.0	
Riffles	6	112	2.6	0.13	286	9.85%	0	0.0	
Rapids	11	196	3.1	0.12	517	17.78%	0	0.0	
Cascades	28	781	1.8	0.12	1,413	48.64%	0	0.0	
Step/Falls	8	11	1.1	0.07	18	0.63%	0	0.0	
Dry	0	0			0	0.00%	0	0.0	
Culverts	1	22	0.9	0.10	19	0.65%	0	0.0	

POOL SUMMARY			
	Total	Total of all Channel Lengths # / Km	Primary Channel Length # / Km
All Pools:	30	22.2	22.7
Pools >=1m deep:	1	0.7	0.8
Complex pools (LWD pieces>=3):	7	5.2	5.3
Pool frequency (channel widths/pool):	9.4		
Residual pool depth (avg):	0.38		

Comment Summary

Restoration Monitoring Sites 2005

MONITORING AREA: **3-MS** SITE ID: **276** FALL CREEK TRIBUTARY A POST-TX

UNIT#	TYPE	CHAN	DIST. (m)	COMMENTS	NOTE ESTIMATOR	NOTE NUMERATOR
8	SC	00	104.6	SS/		
9	LP	00	128	SS/		
10	RB	00	140.4	SS/SS		
11	LP	00	152.5	HS	PLACED WOOD	
16	RP	00	211	SS/, HS	PLACED WOOD	
17	LP	00	220	SS/		
19	LP	01	239.3	/TJ		
20	CB	11	239.3		CC UPSTREAM, NO STEP	
23	SR	00	249.5	HS	PLACED WOOD, H = 0.3	
24	CB	00	265.1	WL, HS	SCULPIN, PLACED ROCKS	
25	CC	00	287.3	CC	2.4 x 1.75, FISH LADDERS	
26	RB	00	323.1	HS	PUSHED IN LOGS	
27	LP	00	329	HS	PUSHED IN LOGS	
28	CB	01	350.7	HS, WL, LA/	PUSHED IN LOGS, ELK TRACKS	
29	BW	10	350.7	HS	PUSHED IN LOGS	
30	LP	00	358.2	HS, LA/	PUSHED IN LOGS	
31	CB	00	369.8	HS, /LA	PUSHED IN TREES	
32	LP	00	375.5	HS	PUSHED IN TREES	
33	RB	00	420.8	HS	PUSHED IN TREES	
35	BW	10	438.9	SS/		
36	RB	00	457.3	SS/		

Comment Summary

Restoration Monitoring Sites 2005

MONITORING AREA: **3-MS** SITE ID: **276** FALL CREEK TRIBUTARY A POST-TX

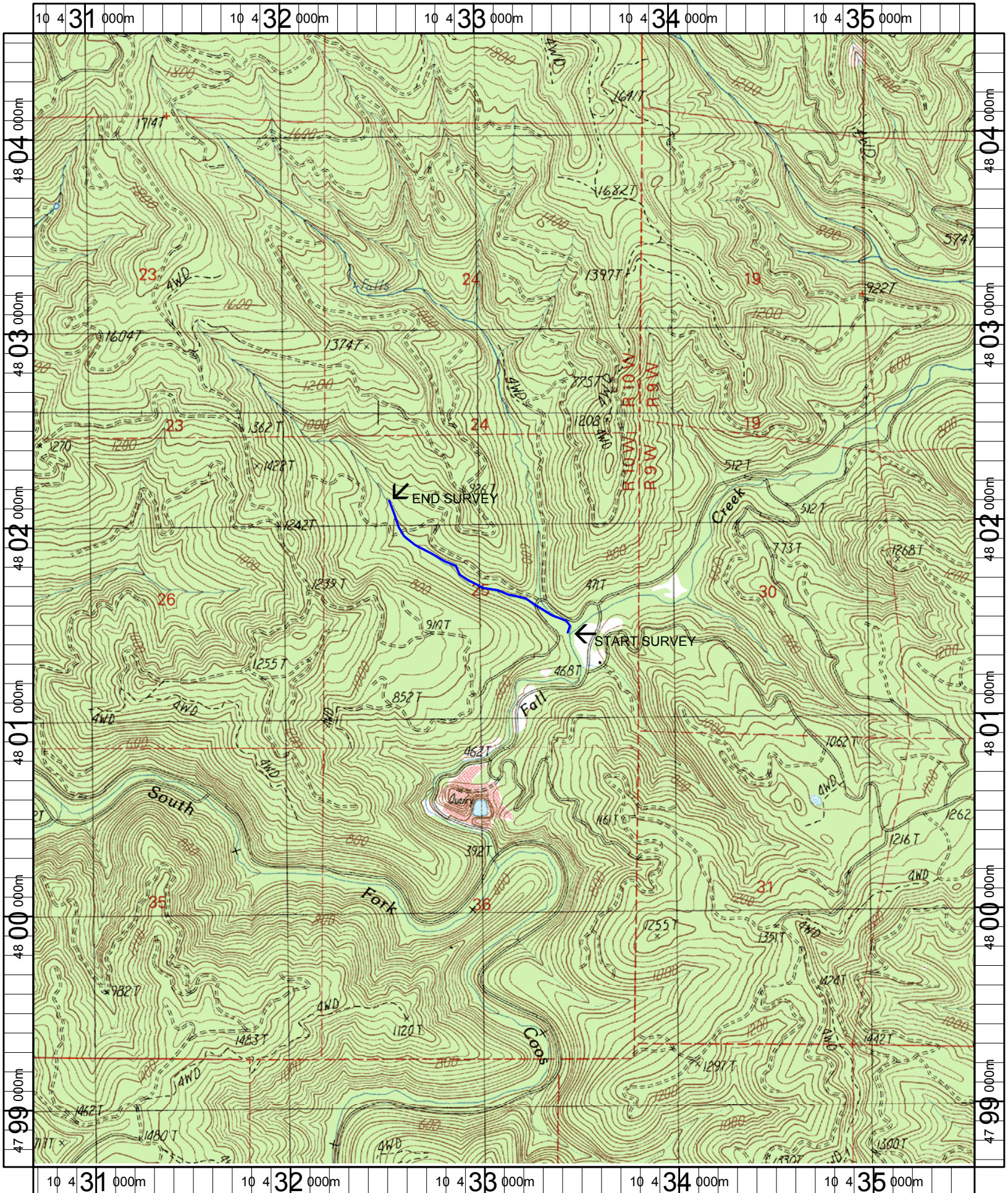
UNIT#	TYPE	CHAN	DIST. (m)	COMMENTS	NOTE ESTIMATOR	NOTE NUMERATOR
38	CB	00	478.8	LI/		
39	LP	00	486.5	HS	PUSHED IN TREES	
43	CB	00	585.3	HS, /LA	PUSHED IN TREES	
44	RI	00	608.4		REDD	
46	CB	00	656.9	LS/		
47	LP	00	663.2	WL	REDD	
48	CB	00	709.2	WL	REDD	
49	DP	00	715.3	HS, DJ	PLACED WOOD	
50	CB	00	745.8	WL, HS, DJ	SS/, REDD	
51	RI	00	766.3	WL	STEELHEAD SMOLT	
53	CB	00	782.9	SS/		
56	LP	00	829.3	WL	STEELHEAD SMOLT	
57	CB	00	853.3	SS/		
58	SP	00	861.1	WL	WILDLIFE TRAIL	
62	SR	00	962.95		H=0.45m	
63	CB	00	1012.95	WL/SS	REDD	
64	CB	00	1035.75	SS/	CT, CT D15, D30 ST, LT	
66	SL	00	1041.45		H=0.95	
68	BW	10	1053.85	WL	REDD	
69	PP	00	1058.95	SS/		
70	SL	00	1060.25		H=0.5m	

Comment Summary

Restoration Monitoring Sites 2005

MONITORING AREA: **3-MS** SITE ID: **276** FALL CREEK TRIBUTARY A POST-TX

<u>UNIT#</u>	<u>TYPE</u>	<u>CHAN</u>	<u>DIST. (m)</u>	<u>COMMENTS</u>	<u>NOTE ESTIMATOR</u>	<u>NOTE NUMERATOR</u>
71	CB	01	1091.35	SS,TJ/		
72	CB	11	1091.35		ACH=0.3, ACW=2.8	
74	PP	00	1151.05	WL	REDD	
75	SL	00	1151.25		H=0.35m	
76	CB	00	1190.95	SS/		
77	CB	00	1201.25	BV RF		
78	SC	00	1201.55	BV	H=0.45m	
79	RI	00	1213.85	WL BV	ELK TRACKS	
82	CB	00	1286.55		US, WF D30, D15 ST, LT	
84	CB	00	1319.15	WL/SS	REDD, CH, MV D15, G ST	



Name: TIOGA
 Date: 1/6/2005
 Scale: 1 inch equals 2000 feet

Location: 10 433126 E 4801608 N
 Caption: FALL CREEK TRIBUTARY A RESTORATION SITE - COOS BASIN