

ODFW AQUATIC INVENTORY PROJECT
OREGON PLAN FOR SALMON & WATERSHEDS
STREAM RESTORATION HABITAT REPORT

STREAM: Seelander Creek (MS-217)
BASIN: Coos Bay
SURVEY TYPE: Post-Tx
DATE: February 3, 2004
SURVEY CREW: Michael Scheu, Jeremiah Bernier
REPORT PREPARED BY: Paul Jacobsen
BASIN AREA: 5.0 km²
USGS MAPS: Coos Bay
ECOREGION: Coast Range Sitka Spruce

GENERAL DESCRIPTION:

The Seelander Creek habitat survey extended 496 meters. The channel was constrained by terraces in a broad valley floor. The average valley width index was 12.4 (range: 5.0-20.0). Land use for the reach was timber harvest and second growth (15-30 cm dbh) trees. The average unit gradient was 1.0 percent. Riffles (46%) and scour pools (38%) dominated stream habitat. Gravel (43%) and sand (43%) dominated stream substrate. Wood volume was low at 16.1 m³/100m.

COMMENTS:

There were no potential barriers to upstream fish migration in the surveyed length.

The crew noted several habitat structures during the survey.

REACH 1

T26S-R12W-S28SW

REACH 1

Valley and Channel Summary

Valley Characteristics (Percent Reach Length)

Narrow Valley Floor		Broad Valley Floor	
Steep V-shape	0%	Constraining Terraces	100%
Moderate V-shape	0%	Multiple Terraces	0%
Open V-shape	0%	Wide Floodplain	0%
Valley Width Index	12.4	VWI Range:	5 - 20

Channel Morphology (Percent Reach Length)

Constrained		Unconstrained	
Hillslope	0%	Single Channel	0%
Bedrock	0%	Multiple Channel	0%
Terrace	100%	Braided Channel	0%
Alt. Terrace/Hill	0%		
Landuse	0%		

Channel Characteristics

Type	Length (m)	Area (m2)	Dry Units
Primary	496	1,393	0
Secondary	10	8	0

Channel Dimensions (m)

Wetted	Active	Floodprone n = 5	First Terrace n = 5
Width: 3.3	Width: 4.3	8.6 (4.8 - 13.7)	12.4 (6.2 - 22.7)
Depth: 0.40	Height: 0.5	1.0 (0.9 - 1)	1.7 (1.1 - 2.8)

W:D ratio: 8.9 Entrenchment (ACW:FPW ratio): 1.9
Stream Flow Type: MF Habitat Units/100m (total channel length): 9.3
Average Unit Gradient: 1.0% Habitat Units/100m (primary channel length): 9.5
Water temperature (°C): 9.0 - 9.0

Riparian, Bank, and Wood Summary

	Primary	Secondary
Land Use:	TH	ST
Riparian Vegetation:	D15	S

Bank Condition and Shade

Bank Status	Percent Reach Length	Shade (% of 180)
Actively Eroding:		Reach avg:
Undercut Banks:		Range: -

Large Wood Debris

	Total	Total / 100m primary channel
All pieces (>=3m x 0.15m):	88	17.8
Volume (m ³):	80	16.1
Key pieces (>=12m x 0.60m):	1	0.2

OREGON DEPARTMENT OF FISH AND WILDLIFE

SEELANDER CREEK POST-TX (MS-217)

HABITAT INVENTORY

Report Date: 6/16/2004

Survey Date:

2/3/2004

REACH 1

T26S-R12W-S28SW

REACH 1

HABITAT DETAIL

Habitat Type	Number Units	Total Length (m)	Avg Width (m)	Avg Depth (m)	Total Area (m ²)	Large Boulders (#>0.5m)	Substrate Percent Wetted Area					
							S/O	Snd	Grvl	Cbl	Bldr	Bdrk
POOL-BACKWATER	1	3	1.1	0.30	3	0	50	50	0	0	0	0
POOL-BEAVER DAM	1	51	3.0	0.90	153	0	40	60	0	0	0	0
POOL-DAMMED	1	15	2.8	0.75	41	0	30	60	10	0	0	0
POOL-LATERAL SCOUR	21	179	2.9	0.55	503	0	13	47	40	0	0	0
POOL-PLUNGE	2	8	4.2	0.70	31	0	15	54	32	0	0	0
RAPID/BOULDERS	1	7	0.8	0.05	6	0	30	70	0	0	0	0
RIFFLE	16	237	2.8	0.20	639	0	7	30	63	0	0	0
STEP/BEAVER DAM	2	2	4.0	0.15	9	0	35	50	15	0	0	0
STEP/COBBLE	1	4	2.3	0.15	9	0	0	20	80	0	0	0
STEP/LOG	1	0	23.0	0.15	9	0	20	70	10	0	0	0
Total:	47	505	3.3	0.40	1,402	0	Avg: 14	43	43	0	0	0

HABITAT SUMMARY

Habitat Group	Number Units	Total Length (m)	Avg Width (m)	Avg Depth (m)	Wetted Area		Large Boulders	
					(m ²)	Percent	Number	(# / 100m ²)
Dammed & BW Pools	3	68	2.3	0.65	196	14.01%	0	0.0
Scour Pools	23	187	3.0	0.57	534	38.08%	0	0.0
Glides	0	0			0	0.00%	0	0.0
Riffles	16	237	2.8	0.20	639	45.58%	0	0.0
Rapids	1	7	0.8	0.05	6	0.40%	0	0.0
Cascades	0	0			0	0.00%	0	0.0
Step/Falls	4	7	8.3	0.15	27	1.93%	0	0.0
Dry	0	0			0	0.00%	0	0.0
Culverts	0	0			0	0.00%	0	0.0

POOL SUMMARY

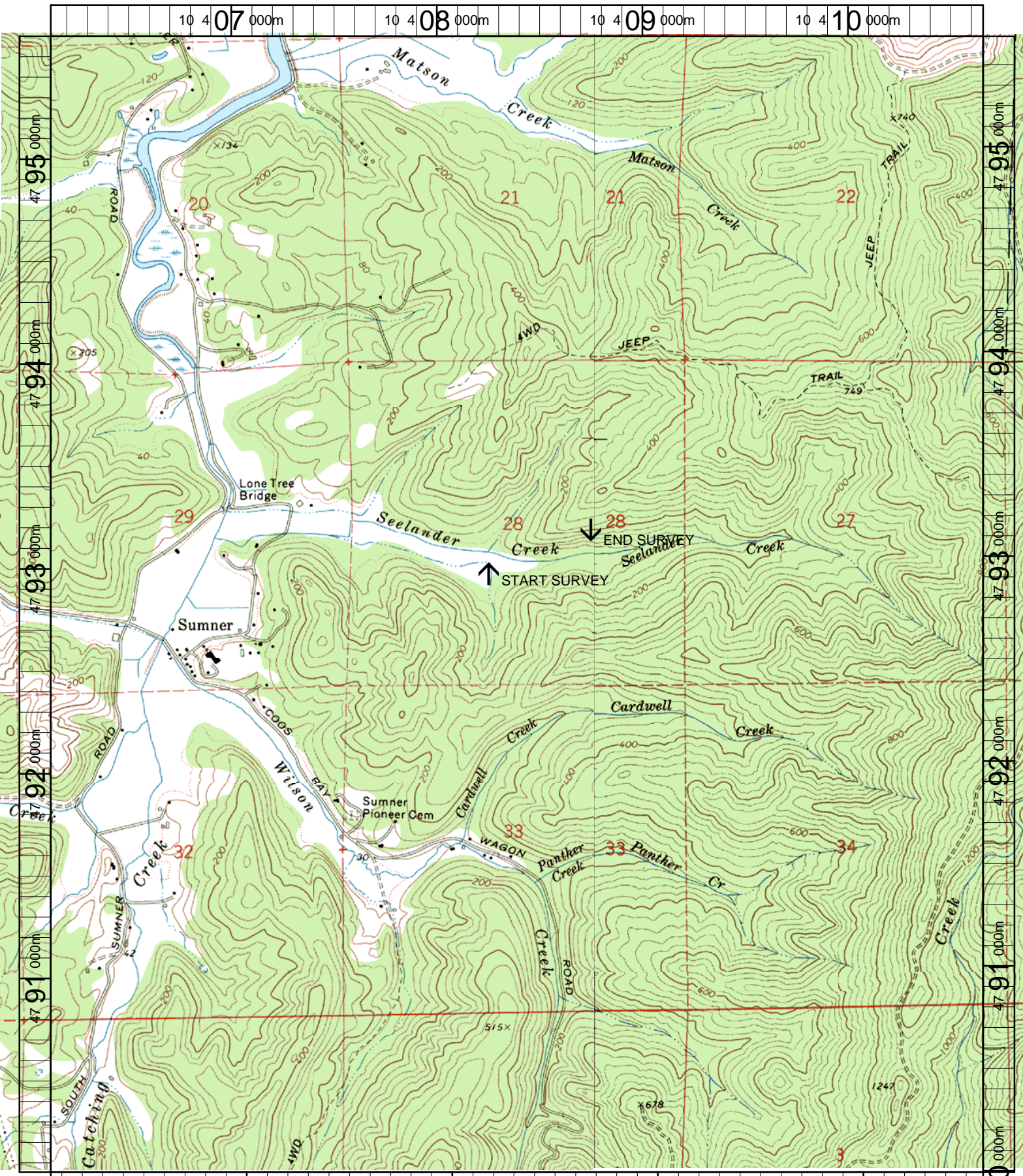
	Total of all Channel Lengths		Primary Channel Length
	Total	# / Km	# / Km
All Pools:	26	51.5	52.5
Pools >=1m deep:	0	0.0	0.0
Complex pools (LWD pieces>=3):	9	17.8	18.2
Pool frequency (channel widths/pool):	4.5		
Residual pool depth (avg):	0.39		

Comment Summary

Oregon Plan Monitoring Sites 2002

MONITORING AREA: **3-MS** SITE ID: **217** SEELANDER CREEK POST-TX (MS-2)

UNIT#	TYPE	CHAN	DIST. (m)	COMMENTS	NOTE ESTIMATOR	NOTE NUMERATOR
1	LP	00	4.2		T=9C	
6	SL	00	43		H=0.7M	
7	DP	01	57.5	HS		
15	SD	00	109.2	BD	H=0.2M	
17	LP	00	146.3		BEAVER HOLE	
21	SD	00	174.3	BD	H=0.9M	
22	BP	00	225.3	BV		
30	RI	00	301.3	HS		
32	RB	11	314.3		T=9C; ACW=1.2	
37	LP	00	391.1	HS		
43	LP	00	437.8	HS		
46	LP	00	487	HS		



Name: COOS BAY
 Date: 12/17/2003
 Scale: 1 inch equals 2000 feet

Location: 10 408347 E 4792801 N
 Caption: SEELANDER CREEK RESTORATION SITE - COOS BAY BASIN