

REACH

T26S-R11W-S21NE

REACH

Valley and Channel Summary

Valley Characteristics (Percent Reach Length)

Narrow Valley Floor		Broad Valley Floor	
Steep V-shape	0%	Constraining Terraces	100%
Moderate V-shape	0%	Multiple Terraces	0%
Open V-shape	0%	Wide Floodplain	0%
Valley Width Index	17.2	VWI Range:	11 - 26

Channel Morphology (Percent Reach Length)

Constrained		Unconstrained	
Hillslope	0%	Single Channel	0%
Bedrock	0%	Multiple Channel	0%
Terrace	100%	Braided Channel	0%
Alt. Terrace/Hill	0%		
Landuse	0%		

Channel Characteristics

Type	Length (m)	Area (m2)	Dry Units
Primary	505	1,166	0
Secondary	27	11	0

Channel Dimensions (m)

Wetted		Active		Floodprone	First Terrace
Width	2.0	Width	3.2	3.5	6.4
Depth	0.24	Height	0.2	0.5	1.6
		W:D ratio	15.2	Entrenchment	1.1

Stream Flow Type:	MF	Water temp (C):	8.5 - 8.5
Avg. Unit Gradient:	6.7%	Habitat Units/100m:	8.7

Riparian, Bank, and Wood Summary

	<u>Primary</u>	<u>Secondary</u>
Land Use:	ST	TH
Riparian Vegetation:	C15	S

Bank Condition and Shade

Bank Status	Percent Reach Length	Shade (% of 180)
Actively Eroding:		Reach avg:
Undercut Banks:		Range: -

Large Wood Debris

	Total	Total / 100m
All pieces (>=3m x 0.15m):	144	28.5
Volume (m ³):	113	22.4
Key pieces (>=10m x 0.60m):	1	0.2

OREGON DEPARTMENT OF FISH AND WILDLIFE

WAPITI CREEK PRE-TX (MS-208)

HABITAT INVENTORY

Report Date: 5/6/03

Survey Date:

3/17/03

REACH		T26S-R11W-S21NE					REACH						
Habitat Type	Number Units	HABITAT DETAIL					Substrate						
		Total	Avg	Avg	Total	Large	Percent Wetted Area						
		Length (m)	Width (m)	Depth (m)	Area (m ²)	Boulders (#>0.5m)	S/O	Snd	Grvl	Cbl	Bldr	Bdrk	
CASCADE/BOULDERS	2	26	1.8	0.25	46	0	2	9	22	34	33	0	
CULVERT CROSSING	2	21	1.0	0.15	23	0	3	60	20	13	5	0	
POOL-BACKWATER	1	6	0.4	0.20	2	0	10	60	20	10	0	0	
POOL-LATERAL SCOUR	1	5	3.8	0.30	17	0	5	20	45	25	5	0	
POOL-PLUNGE	6	38	2.7	0.73	109	0	0	13	19	29	35	4	
RAPID/BOULDERS	15	269	2.0	0.18	549	0	3	16	28	31	22	0	
RIFFLE	7	149	2.6	0.14	400	0	5	20	31	34	10	1	
STEP/BOULDERS	6	7	1.6	0.13	14	0	0	10	23	38	29	0	
STEP/COBBLE	2	5	2.0	0.10	10	0	0	13	35	30	23	0	
STEP/LOG	2	5	0.8	0.18	7	0	0	10	39	39	12	0	
Total:	44	532	2.0	0.24	1,178	0	Avg	2	18	27	31	21	1

HABITAT SUMMARY								
Habitat Group	Number Units	Total Length (m)	Avg Width (m)	Avg Depth (m)	Wetted Area		Large Boulders	
					(m ²)	Percent	Number	(# / 100m ²)
Dammed & BW Pools	1	6	0.4	0.20	2	0.20%	0	0.0
Scour Pools	7	43	2.8	0.67	126	10.72%	0	0.0
Glides	0	0			0	0.00%	0	0.0
Riffles	7	149	2.6	0.14	400	33.94%	0	0.0
Rapids	15	269	2.0	0.18	549	46.61%	0	0.0
Cascades	2	26	1.8	0.25	46	3.87%	0	0.0
Step/Falls	10	18	1.5	0.14	32	2.69%	0	0.0
Dry	0	0			0	0.00%	0	0.0
Culverts	2	21	1.0	0.15	23	1.97%	0	0.0

POOL SUMMARY		
	<u>Total</u>	<u># / Km</u>
All Pools:	8	15.8
Pools >=1m deep:	1	2.0
Complex pools (LWD pieces>=3):	0	0.0
Pool frequency (channel widths/pool):	20.5	
Residual pool depth (avg):	0.48	

STREAM SUMMARY

WAPITI CREEK PRE-TX (MS-208)

Number Units	Total Length (m)	Avg Width (m)	Avg Depth (m)	Total Area (m ²)	Substrate Percent Wetted Area						Large Boulders (>0.5m)
					S/O	Snd	Grvl	Cbl	Bldr	Bdrk	
44	532	2.0	0.24	1,178	2	18	27	31	21	1	

Habitat Group	Wetted Area	
	(m ²)	Percent
Dammed & BW Pools	2	0.20%
Scour Pools	126	10.72%
Glides	0	0.00%
Riffles	400	33.94%
Rapids	549	46.61%
Cascades	46	3.87%
Step/Falls	32	2.69%
Dry	0	0.00%
Culverts	23	1.97%

Comment Summary

Restoration Monitoring Sites 2003

MONITORING AREA: 3-MS SITE ID: 208 WAPITI CREEK PRE-TX (MS-208)

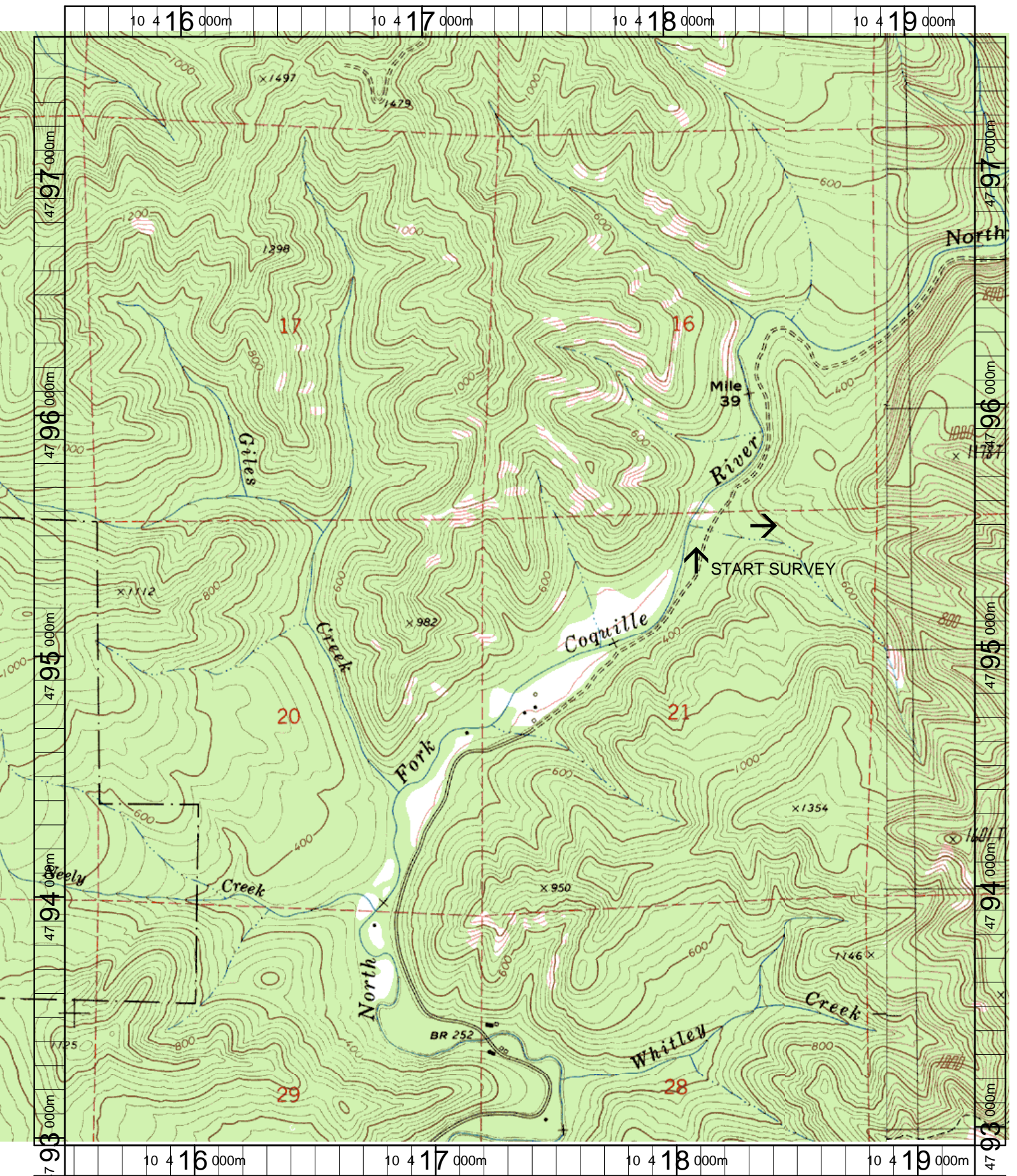
UNIT#	TYPE	CHAN	DIST. (m)	COMMENTS	NOTE ESTIMATOR	NOTE NUMERATOR
1	RI	00	10.4		T=8.5C	
2	PP	00	12.2	HS		
3	SC	00	17.15		LONG SET OF STEPS OV	
5	RI	00	58.65		SITE #2	
7	RI	00	76.05		SITE #3	
8	LP	00	80.55		POOL BY CULVERT	
9	CC	00	93.25		D=1.53	
10	RB	00	118.25	/SS	DISTURBED BY CC PLAC	
11	RB	00	139.55		GPS=0418201/4795497	
12	RB	00	152.05		SITE #4	
15	RB	00	166.75	/SS		
17	SB	00	175.65		2 STEPS W/NO POOLS	
23	RB	00	233.95		GPS=0418286/4795528	
26	RB	00	312.25		SITE #6	
28	SB	00	335.95	/SS		
29	RI	01	364.95	TJ/	T=9.5C	
30	SB	11	364.95		GPS=0418381/4795479	
34	CB	00	392.75	/TH	LAND USE CHANGE TO T	
38	RB	02	425.65		CHNL DISAPPEARS UNDE	
39	SB	00	425.95	PN		
41	SL	00	455.45	PN		

Comment Summary

Restoration Monitoring Sites 2003

MONITORING AREA: 3-MS SITE ID: 208 WAPITI CREEK PRE-TX (MS-208)

<u>UNIT#</u>	<u>TYPE</u>	<u>CHAN</u>	<u>DIST. (m)</u>	<u>COMMENTS</u>	<u>NOTE ESTIMATOR</u>	<u>NOTE NUMERATOR</u>
42	RI	00	482.75		GPS=0418457/4795418	
43	CC	00	491.05		DIAM=.5, .65M DROP	
44	RB	00	505.05		GPS=0418498/4795422	



Name: DANIELS CREEK
 Date: 6/11/2003
 Scale: 1 inch equals 1666 feet

Location: 10 417373 E 4795251 N
 Caption: WAPITI CREEK RESTORATION SITE - NORTH FORK
 COQUILLE BASIN