

ODFW AQUATIC INVENTORY PROJECT
OREGON PLAN FOR SALMON & WATERSHEDS
STREAM RESTORATION HABITAT REPORT

STREAM: Sixes River Unnamed Tributary (MS-192)
BASIN: Sixes River
SURVEY TYPE: Pre-Tx
DATE: March 14, 2005
SURVEY CREW: Jennifer Schmitt, Neil Jensen
REPORT PREPARED BY: Paul Jacobsen
BASIN AREA: 3.2 km²
USGS MAPS: Barklow Mountain
ECOREGION: Coast Range California Extension

GENERAL DESCRIPTION:

The Sixes River Tributary habitat survey extended 713 meters. The channel was constrained by terraces in a broad valley floor. The average valley width index was 11.5 (range: 4.9-25.0). Land use for the reach was timber harvest and second growth (15-30 cm dbh) trees. The average unit gradient was 3.2 percent. Rapids (62%) dominated stream habitat. Gravel (63%) dominated stream substrate. Wood volume was very low at 7.0 m³/100m.

COMMENTS:

There were no potential barriers to upstream fish migration in the surveyed length.

OREGON DEPT OF FISH AND WILDLIFE UNNAMED SIXES RIVER TRIB PRE-TX (3-MS, 192)

HABITAT INVENTORY

Report Date: 11/29/2005

Survey Date:

3/14/2005

REACH 1		T32S-R13W-S10SW					REACH 1					
HABITAT DETAIL												
Habitat Type	Number Units	Total Length (m)	Avg Width (m)	Avg Depth (m)	Total Area (m ²)	Large Boulders (#>0.5m)	Substrate Percent Wetted Area					
							S/O	Snd	Grvl	Cbl	Bldr	Bdrk
CASCADE/BOULDERS	4	44	2.3	0.06	101	0	2	5	74	16	2	0
POOL-LATERAL SCOUR	17	138	2.4	0.52	336	0	8	22	58	6	1	6
POOL-PLUNGE	1	5	4.2	0.75	22	0	11	32	53	0	0	5
RAPID/BOULDERS	22	427	2.7	0.09	1,148	0	2	7	64	23	4	0
RIFFLE	6	72	2.2	0.16	159	0	3	14	69	11	2	1
RIFFLE W/ POCKETS	1	21	2.1	0.20	43	0	5	10	40	40	5	0
STEP/COBBLE	3	15	2.6	0.10	42	0	0	5	55	34	5	0
STEP/LOG	1	0	2.7	0.01	1	0	0	0	80	20	0	0
Total:	55	721	2.6	0.24	1,851	0	Avg: 4	12	63	16	3	2

HABITAT SUMMARY									
Habitat Group	Number Units	Total Length (m)	Avg Width (m)	Avg Depth (m)	Wetted Area		Large Boulders		
					(m ²)	Percent	Number	(# / 100m ²)	
Dammed & BW Pools	0	0			0	0.00%	0	0.0	
Scour Pools	18	143	2.5	0.54	358	19.33%	0	0.0	
Glides	0	0			0	0.00%	0	0.0	
Riffles	7	93	2.2	0.16	202	10.93%	0	0.0	
Rapids	22	427	2.7	0.09	1,148	62.03%	0	0.0	
Cascades	4	44	2.3	0.06	101	5.43%	0	0.0	
Step/Falls	4	15	2.6	0.08	42	2.28%	0	0.0	
Dry	0	0			0	0.00%	0	0.0	
Culverts	0	0			0	0.00%	0	0.0	

POOL SUMMARY			
	<u>Total</u>	Total of all Channel Lengths	Primary Channel Length
		<u># / Km</u>	<u># / Km</u>
All Pools:	18	25.0	25.3
Pools >=1m deep:	0	0.0	0.0
Complex pools (LWD pieces>=3):	6	8.3	8.4
Pool frequency (channel widths/pool):	7.3		
Residual pool depth (avg):	0.41		

Comment Summary

Restoration Monitoring Sites 2005

MONITORING AREA: **3-MS** SITE ID: **192** UNNAMED SIXES RIVER TRIB PRE-T

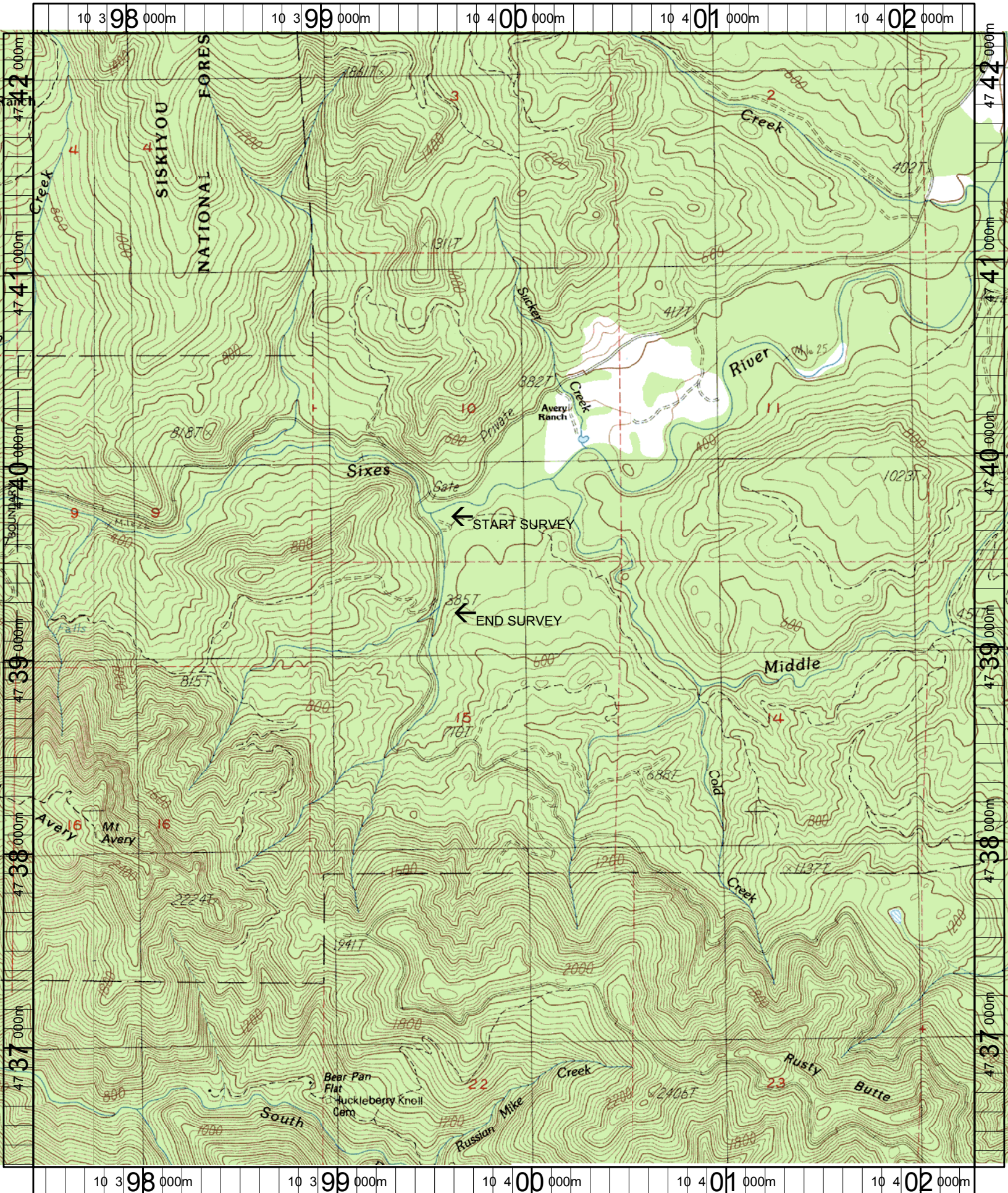
UNIT#	TYPE	CHAN	DIST. (m)	COMMENTS	NOTE ESTIMATOR	NOTE NUMERATOR
2	RI	00	22.9	WL	REDD	
5	RB	00	77.1		CTCT M30G THST	
7	RB	00	106.7	/LA	1m x 1m	
8	LP	00	116.8	WL	REDDS WILDLIFE TRAIL	
10	LP	01	144.4	TJ/	CTCT D30S THST	
11	CB	11	144.4	/SS	ACW=1.5m ACH=0.25m	
13	LP	00	156.9		SALMO FRY	
21	RI	00	247.4	WL	REDDS, FROG	
22	RB	00	270.8		CTCT D15S THST	
25	LP	00	297	WL/SS	REDD	
26	RB	00	313.8	WL LI/	TRAIL, FROG, 4m x 3m	
27	LP	00	325.2	SS/WL	DEER TRACKS	
28	RB	00	353.1	SS/LI	9m x 4m	
29	LP	00	360.7	WL		
31	LP	00	373.1	WL	REDD	
32	RB	00	382	LA/	1m x 1m	
33	LP	00	390.5	WL	REDD	
34	RB	00	407	WL/SS	RSN	
35	LP	00	413.3	WL DJ	REDDS	
36	CB	00	428.1	SS/		
38	RB	00	466.8	SS/		

Comment Summary

Restoration Monitoring Sites 2005

MONITORING AREA: **3-MS** SITE ID: **192** UNNAMED SIXES RIVER TRIB PRE-T

UNIT#	TYPE	CHAN	DIST. (m)	COMMENTS	NOTE ESTIMATOR	NOTE NUMERATOR
42	SL	00	497.4		H=0.15m	
44	RI	00	521.4	WL	CTCT D15S THST	REDD
46	RB	00	567.3	LS/SS	6m x 3m	
47	LP	00	572.6	/SS		
50	RB	00	614.4		SALMO FRY	
51	RB	00	626.4	WL	RSN	
52	RP	00	647	WL	TRAIL, RSN	
53	RB	00	670.4	/CE		
55	RI	00	712.5		CTCT D15S THST	



Name: BARKLOW MT
 Date: 6/14/2004
 Scale: 1 inch equals 2000 feet

Location: 10 399895 E 4739280 N
 Caption: SIXES RIVER UNNAMED TRIBUTARY RESTORATION SITE -
 SIXES BASIN