

REACH

T25S-R11W-S08NE

REACH

Valley and Channel Summary

Valley Characteristics (Percent Reach Length)

<u>Narrow Valley Floor</u>		<u>Broad Valley Floor</u>	
Steep V-shape	0%	Constraining Terraces	100%
Moderate V-shape	0%	Multiple Terraces	0%
Open V-shape	0%	Wide Floodplain	0%
Valley Width Index 10.1		VWI Range: 3 - 20	

Channel Morphology (Percent Reach Length)

<u>Constrained</u>		<u>Unconstrained</u>	
Hillslope	0%	Single Channel	0%
Bedrock	0%	Multiple Channel	0%
Terrace	0%	Braided Channel	0%
Alt. Terrace/Hill	100%		
Landuse	0%		

Channel Characteristics

<u>Type</u>	<u>Length (m)</u>	<u>Area (m2)</u>	<u>Dry Units</u>
Primary	713	4,105	0
Secondary	38	59	0

Channel Dimensions (m)

<u>Wetted</u>		<u>Active</u>		<u>Floodprone</u>	<u>First Terrace</u>
Width	5.5	Width	6.9	8.6	14.3
Depth	0.54	Height	0.6	1.2	2.5
W:D ratio		12.4	Entrenchment		1.2

Stream Flow Type:	MF	Water temp (C):	9.5 - 9.5
Avg. Unit Gradient:	1.3%	Habitat Units/100m:	7.3

Riparian, Bank, and Wood Summary

	<u>Primary</u>	<u>Secondary</u>
Land Use:	TH	YT
Riparian Vegetation:	D15	S

Bank Condition and Shade

<u>Bank Status</u>	<u>Percent Reach Length</u>	<u>Shade (% of 180)</u>
Actively Eroding:		Reach avg:
Undercut Banks:		Range: -

Large Wood Debris

	<u>Total</u>	<u>Total / 100m</u>
All pieces ($\geq 3m \times 0.15m$):	132	18.5
Volume (m ³):	335	47.0
Key pieces ($\geq 10m \times 0.60m$):	39	5.5

OREGON DEPARTMENT OF FISH AND WILDLIFE

WOODRUFF CREEKPOST-TX (MS-169)

HABITAT INVENTORY

Report Date: 5/6/03

Survey Date:

1/28/03

REACH		T25S-R11W-S08NE					REACH						
Habitat Type	Number Units	HABITAT DETAIL					Substrate						
		Total	Avg	Avg	Total	Large	Percent Wetted Area						
		Length (m)	Width (m)	Depth (m)	Area (m ²)	Boulders (#>0.5m)	S/O	Snd	Grvl	Cbl	Bldr	Bdrk	
CULVERT CROSSING	1	33	2.4	0.40	78	0	5	5	10	14	67	0	
GLIDE	3	53	8.1	0.37	435	0	37	48	8	3	3	0	
POOL-BACKWATER	4	20	2.2	0.24	38	0	56	22	18	2	0	1	
POOL-DAMMED	1	13	12.6	0.60	169	0	32	63	5	0	0	0	
POOL-LATERAL SCOUR	14	212	6.2	0.96	1,322	0	15	45	30	5	3	1	
POOL-PLUNGE	1	6	7.8	0.82	47	0	10	45	45	0	0	0	
POOL-STRAIGHT SCOUR	1	20	4.8	1.10	97	0	6	24	18	18	12	24	
RIFFLE	25	392	5.0	0.36	1,965	0	6	36	39	11	6	2	
STEP/LOG	2	2	7.8	0.32	12	0	15	58	28	0	0	0	
Total:	52	750	5.5	0.54	4,164	0	Avg 15	39	31	8	5	2	

HABITAT SUMMARY								
Habitat Group	Number Units	Total Length (m)	Avg Width (m)	Avg Depth (m)	Wetted Area		Large Boulders	
					(m ²)	Percent	Number	(# / 100m ²)
Dammed & BW Pools	5	34	4.3	0.31	207	4.97%	0	0.0
Scour Pools	16	238	6.2	0.96	1,467	35.22%	0	0.0
Glides	3	53	8.1	0.37	435	10.46%	0	0.0
Riffles	25	392	5.0	0.36	1,965	47.19%	0	0.0
Rapids	0	0			0	0.00%	0	0.0
Cascades	0	0			0	0.00%	0	0.0
Step/Falls	2	2	7.8	0.32	12	0.28%	0	0.0
Dry	0	0			0	0.00%	0	0.0
Culverts	1	33	2.4	0.40	78	1.88%	0	0.0

POOL SUMMARY		
	<u>Total</u>	<u># / Km</u>
All Pools:	21	29.5
Pools >=1m deep:	7	9.8
Complex pools (LWD pieces>=3):	13	18.2
Pool frequency (channel widths/pool):	5.2	
Residual pool depth (avg):	0.58	

STREAM SUMMARY

WOODRUFF CREEKPOST-TX (MS-169)

Number Units	Total Length (m)	Avg Width (m)	Avg Depth (m)	Total Area (m ²)	Substrate Percent Wetted Area						Large Boulders (>0.5m)
					S/O	Snd	Grvl	Cbl	Bldr	Bdrk	
52	750	5.5	0.54	4,164	15	39	31	8	5	2	

Habitat Group	Wetted Area	
	(m ²)	Percent
Dammed & BW Pools	207	4.97%
Scour Pools	1,467	35.22%
Glides	435	10.46%
Riffles	1,965	47.19%
Rapids	0	0.00%
Cascades	0	0.00%
Step/Falls	12	0.28%
Dry	0	0.00%
Culverts	78	1.88%

Comment Summary

Restoration Monitoring Sites 2003

MONITORING AREA: 3-MS SITE ID: 169 WOODRUFF CREEKPOST-TX (MS-169)

<u>UNIT#</u>	<u>TYPE</u>	<u>CHAN</u>	<u>DIST. (m)</u>	<u>COMMENTS</u>	<u>NOTE ESTIMATOR</u>	<u>NOTE NUMERATOR</u>
1	RI	00	23.5	BV	POCKET POOL, /WATER	
2	RI	00	40.3	BV, WL	GAME TRAIL, LOGGING C	
3	RI	00	55.7	BV, SS, CE	GAME TRAILS	
6	CC	00	96.2	CC	3.65*3.65M	
7	RI	00	117.9	/LI	HARDPAN, CABLE	
8	RI	00	135.9	BV	HARDPAN, GAME TRAILS	
9	SP	00	156.2	BV	FAILED IRRIG. BRIDGE	
10	RI	00	165.5	BV	GAME TRAILS	
12	RI	00	189.67	BV	DEER TRACKS, GAME TR	
13	BW	00	193.02	/SS, BV	DEER+RACCOON TRACK	
14	LP	00	215.12	BV	STEEL PIPE, CABLE, GA	
15	PP	00	221.12	BV, SS/		
16	BW	00	229.92	WL, /SS	JUV, FED BY SEEP	
17	RI	01	244.42	BV		
18	LP	01	252.87	BV, HS	DJ ASSOC W/HS	
19	RI	02	252.87	BV		
20	LP	00	264.57	DJ	CABLE	
21	RI	00	277.07	HS, SS/	CWA HABITAT SURVEY	
22	LP	00	293.57	HS	10/10/00 FLAG-START RC	
23	LP	00	309.67	HS		
24	RI	00	328.97	BV	CABLE, GAME TRAIL	

Comment Summary

Restoration Monitoring Sites 2003

MONITORING AREA: 3-MS SITE ID: 169 WOODRUFF CREEKPOST-TX (MS-169)

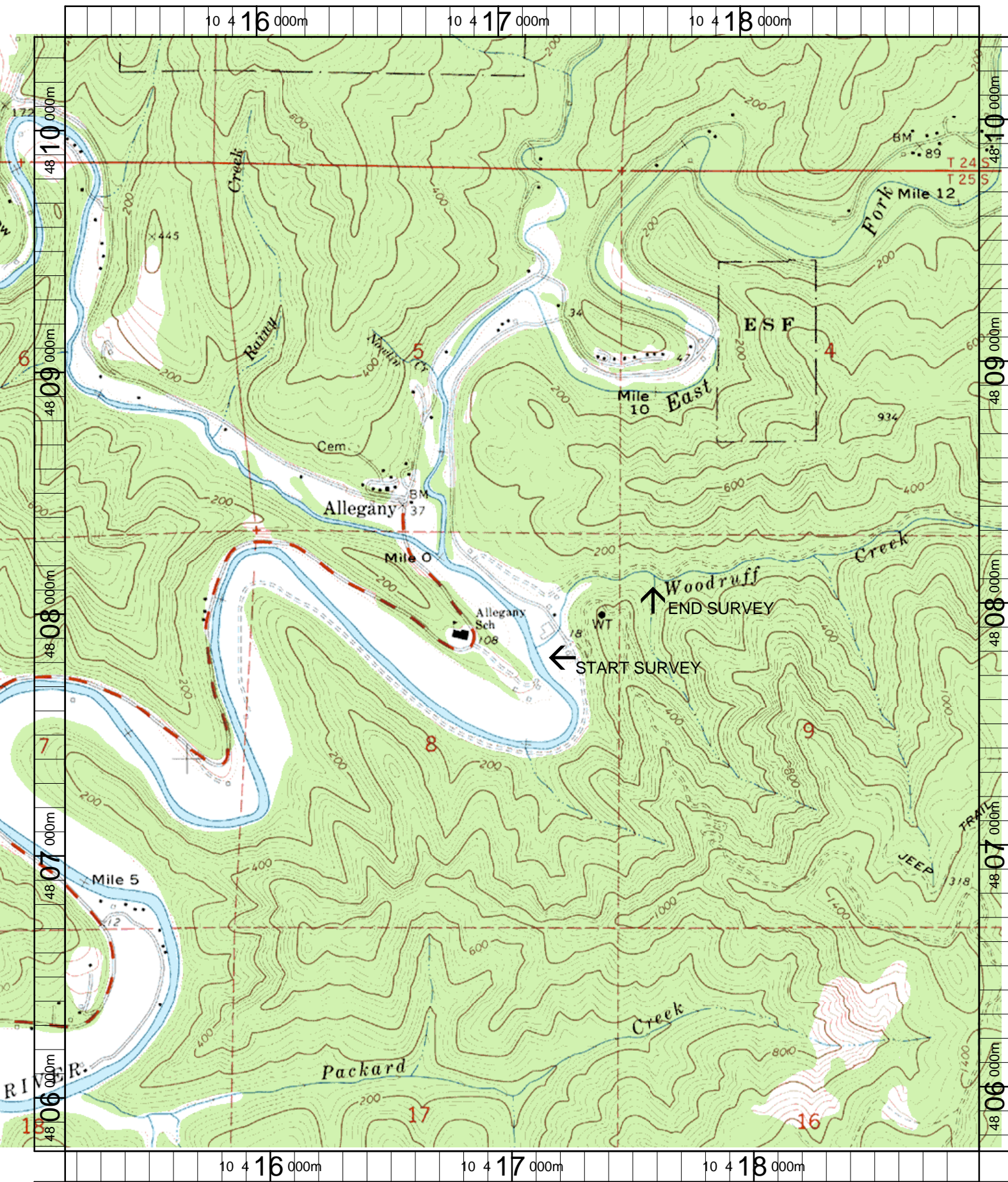
UNIT#	TYPE	CHAN	DIST. (m)	COMMENTS	NOTE ESTIMATOR	NOTE NUMERATOR
25	LP	00	347.57			DEER+RACCOON TRACK
26	RI	00	367.27	SS/, CE/		
27	RI	00	382.77			ODFW HAB SITE #1426 S
28	LP	00	404.47	HS		
29	LP	00	423.57	HS, BV		LOGGING CABLE
30	SL	00	424.17	BV		
31	LP	00	448.77	HS, BV		STRUCTURE 2A
32	RI	00	464.27	BV, HS		CWA/ODFW '97 FLAGGIN
33	LP	00	475.67	HS, DJ		HS#5 RED FLAG
35	DP	00	490.07	HS, /SS		SM FISH, CABLE
36	GL	00	511.57	CE/, /SS		
37	GL	00	529.57	HS		
38	GL	00	542.67	HS, SS/		HS AT START
39	LP	01	556.57	HS		
40	RI	02	556.57	SS/, HS		
41	RI	00	569.87	WL		SM ANIMAL TRACKS
42	LP	00	580.87	HS, WL		RACCOON TRACKS
43	RI	00	593.47	HS		
44	LP	00	601.37	HS		
45	RI	00	615.47	HS		RED FLAG SITE #2
46	RI	00	630.17	HS		

Comment Summary

Restoration Monitoring Sites 2003

MONITORING AREA: 3-MS SITE ID: 169 WOODRUFF CREEKPOST-TX (MS-169)

<u>UNIT#</u>	<u>TYPE</u>	<u>CHAN</u>	<u>DIST. (m)</u>	<u>COMMENTS</u>	<u>NOTE ESTIMATOR</u>	<u>NOTE NUMERATOR</u>
48	RI	00	666.77		STEEL PIPE	
49	LP	00	675.27	HS		
50	RI	01	695.67	HS	RED FLAG SITE #1	
51	RI	11	695.67	HS		
52	RI	00	712.67	NO TERR.		



Name: ALLEGANY
 Date: 3/21/2003
 Scale: 1 inch equals 1666 feet

Location: 10 417065 E 4808064 N
 Caption: WOODRUFF CREEK RESTORATION SITE - MILLICOMA BASIN