

OREGON DEPARTMENT OF FISH AND WILDLIFE

KING CREEK LOWER POST-TX (MS-166)

HABITAT INVENTORY

Report Date: 5/6/03

Survey Date:

2/12/03

REACH		T29S-R11W-S20NE						REACH					
Habitat Type	Number Units	HABITAT DETAIL					Substrate						
		Total	Avg	Avg	Total	Large	Percent Wetted Area						
		Length (m)	Width (m)	Depth (m)	Area (m ²)	Boulders (#>0.5m)	S/O	Snd	Grvl	Cbl	Bldr	Bdrk	
POOL-BACKWATER	1	9	2.7	0.45	25	0	22	50	28	0	0	0	
POOL-ISOLATED	1	2	0.8	0.20	2	0	70	25	5	0	0	0	
POOL-LATERAL SCOUR	20	179	3.5	0.50	628	0	20	39	28	12	2	0	
POOL-PLUNGE	1	8	4.1	0.60	34	0	11	47	26	16	0	0	
RAPID/BOULDERS	1	4	1.6	0.18	6	0	5	35	45	10	5	0	
RIFFLE	15	137	3.0	0.14	405	0	7	42	38	13	1	0	
RIFFLE W/ POCKETS	2	36	3.1	0.20	110	0	5	35	33	23	5	0	
STEP/LOG	2	0	4.2	0.04	1	0	15	37	34	13	0	0	
Total:	43	375	3.2	0.32	1,210	0	Avg 15	40	32	12	1	0	

HABITAT SUMMARY									
Habitat Group	Number Units	Total Length (m)	Avg Width (m)	Avg Depth (m)	Wetted Area		Large Boulders		
					(m ²)	Percent	Number	(# / 100m ²)	
Dammed & BW Pools	2	11	1.8	0.33	26	2.16%	0	0.0	
Scour Pools	21	188	3.5	0.50	662	54.68%	0	0.0	
Glides	0	0			0	0.00%	0	0.0	
Riffles	17	172	3.0	0.15	515	42.54%	0	0.0	
Rapids	1	4	1.6	0.18	6	0.50%	0	0.0	
Cascades	0	0			0	0.00%	0	0.0	
Step/Falls	2	0	4.2	0.04	1	0.11%	0	0.0	
Dry	0	0			0	0.00%	0	0.0	
Culverts	0	0			0	0.00%	0	0.0	

POOL SUMMARY		
	<u>Total</u>	<u># / Km</u>
All Pools:	23	66.3
Pools >=1m deep:	0	0.0
Complex pools (LWD pieces>=3):	5	14.4
Pool frequency (channel widths/pool):	2.7	
Residual pool depth (avg):	0.36	

STREAM SUMMARY

KING CREEK LOWER POST-TX (MS-166)

Number Units	Total Length (m)	Avg Width (m)	Avg Depth (m)	Total Area (m ²)	Substrate Percent Wetted Area						Large Boulders (#>0.5m)
					S/O	Snd	Grvl	Cbl	Bldr	Bdrk	
43	375	3.2	0.32	1,210	15	40	32	12	1	0	

Habitat Group	Wetted Area	
	(m ²)	Percent
Dammed & BW Pools	26	2.16%
Scour Pools	662	54.68%
Glides	0	0.00%
Riffles	515	42.54%
Rapids	6	0.50%
Cascades	0	0.00%
Step/Falls	1	0.11%
Dry	0	0.00%
Culverts	0	0.00%

Comment Summary

Restoration Monitoring Sites 2003

MONITORING AREA: 3-MS SITE ID: 166 KING CREEK LOWER POST-TX (MS-166)

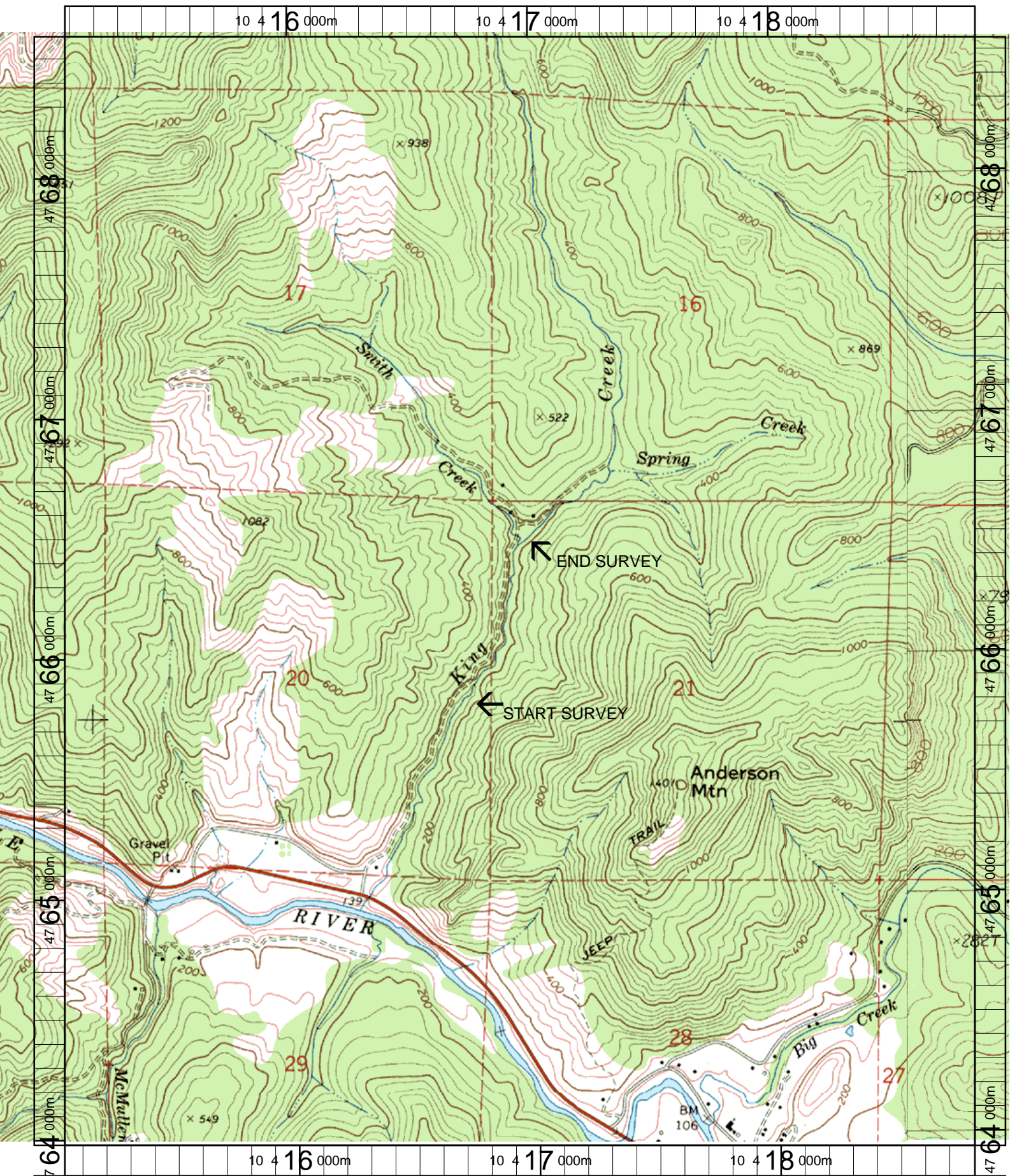
<u>UNIT#</u>	<u>TYPE</u>	<u>CHAN</u>	<u>DIST. (m)</u>	<u>COMMENTS</u>	<u>NOTE ESTIMATOR</u>	<u>NOTE NUMERATOR</u>
2	SL	00	5.7	HS	LOG	
5	LP	00	16.2	LA/WL	OTTER TRACKS	
6	RI	00	40.9	LA/, SS/		
7	RI	00	54	/SS	ORANGE FLAG-"K,C-2,0+1	
8	LP	00	77.5	BV, SS/	HARDPAN, BLACKBERRIE	
9	RI	00	81.8	/SS, BV	BLACKBERRIES, HARDPA	
10	LP	00	98.4	BV, /SS	ORANG FLAG-"KC-3"	
11	LP	00	106.3	BV	BLACKBERRIES	
12	BW	10	106.3	BV	BLACKBERRIES	
13	RI	00	119.9	BV	BLACKBERRIES	
14	LP	00	127.5	BV	BLACKBERRIES	
15	LP	00	131.3		BLACKBERRIES	
16	RB	00	135.1		BLACKBERRIES	
17	LP	00	139.3		BLACKBERRIES	
20	RP	00	177.8		FEW BLACKBERRIES	
22	SL	00	186.3		FEW BLACKBERRIES	
24	RI	00	198.9	WL	ELK TRAIL, BLACKBERRI	
29	LP	00	241.2		HARDPAN	
32	LP	00	270.8	BV		
34	RI	00	287.5	/SS		
35	LP	00	298.2	WL	RSN	

Comment Summary

Restoration Monitoring Sites 2003

MONITORING AREA: 3-MS SITE ID: 166 KING CREEK LOWER POST-TX (MS-166)

<u>UNIT#</u>	<u>TYPE</u>	<u>CHAN</u>	<u>DIST. (m)</u>	<u>COMMENTS</u>	<u>NOTE ESTIMATOR</u>	<u>NOTE NUMERATOR</u>
37	LP	00	325	WL	RACCOON TRACKS	
41	LP	01	345.4	TJ/		
43	RI	11	346.8	FC		



Name: BRIDGE
 Date: 3/20/2003
 Scale: 1 inch equals 1666 feet

Location: 10 416938 E 4766267 N
 Caption: KING CREEK (LOWER) RESTORATION SITE - MF
 COQUILLE BASIN