

REACH

T23S-R11W-S01SE

REACH

Valley and Channel Summary

Valley Characteristics (Percent Reach Length)

<u>Narrow Valley Floor</u>		<u>Broad Valley Floor</u>	
Steep V-shape	0%	Constraining Terraces	0%
Moderate V-shape	100%	Multiple Terraces	0%
Open V-shape	0%	Wide Floodplain	0%
Valley Width Index	2.5	VWI Range:	1.1 - 5.3

Channel Morphology (Percent Reach Length)

<u>Constrained</u>		<u>Unconstrained</u>	
Hillslope	100%	Single Channel	0%
Bedrock	0%	Multiple Channel	0%
Terrace	0%	Braided Channel	0%
Alt. Terrace/Hill	0%		
Landuse	0%		

Channel Characteristics

<u>Type</u>	<u>Length (m)</u>	<u>Area (m2)</u>	<u>Dry Units</u>
Primary	612	3,455	0
Secondary	24	50	0

Channel Dimensions (m)

<u>Wetted</u>		<u>Active</u>		<u>Floodprone</u>	<u>First Terrace</u>
Width	5.2	Width	8.8	12.3	15.1
Depth	0.42	Height	0.5	1.0	1.7
		W:D ratio	17.3	Entrenchment	1.4

Stream Flow Type: MF Water temp (C): 9.0 - 9.0
 Avg. Unit Gradient: 2.5% Habitat Units/100m: 9.0

Riparian, Bank, and Wood Summary

	<u>Primary</u>	<u>Secondary</u>
Land Use:	ST	TH
Riparian Vegetation:	D15	S

Bank Condition and Shade

<u>Bank Status</u>	<u>Percent Reach Length</u>	<u>Shade (% of 180)</u>
Actively Eroding:		Reach avg:
Undercut Banks:		Range: -

Large Wood Debris

	<u>Total</u>	<u>Total / 100m</u>
All pieces (>=3m x 0.15m):	157	25.7
Volume (m ³):	230	37.6
Key pieces (>=10m x 0.60m):	12	2.0

OREGON DEPARTMENT OF FISH AND WILDLIFE

KNIFE CREEK UPPER POST-TX (MS-164)

HABITAT INVENTORY

Report Date: 5/6/03

Survey Date:

2/18/03

REACH		T23S-R11W-S01SE						REACH					
HABITAT DETAIL													
Habitat Type	Number	Total	Avg	Avg	Total	Large	Substrate						
							Units	Length	Width	Depth	Area	Boulders	Percent Wetted Area
		(m)	(m)	(m)	(m ²)	(>0.5m)	S/O	Snd	Grvl	Cbl	Bldr	Bdrk	
POOL-BACKWATER	1	6	2.3	0.30	13	0	70	30	0	0	0	0	
POOL-DAMMED	4	58	7.9	0.77	469	0	6	56	13	14	5	6	
POOL-LATERAL SCOUR	15	160	5.1	0.69	808	0	2	24	24	26	7	17	
POOL-PLUNGE	1	4	4.4	0.70	15	0	0	0	10	30	60	0	
POOL-STRAIGHT SCOUR	2	17	4.7	0.63	77	0	0	13	13	33	28	15	
RAPID/BEDROCK	5	104	5.7	0.28	608	0	0	8	8	6	4	74	
RAPID/BOULDERS	2	25	5.3	0.31	126	0	0	10	25	38	28	0	
RIFFLE	14	210	4.8	0.24	1,038	0	3	18	33	35	6	5	
RIFFLE W/ POCKETS	2	31	7.0	0.27	220	0	0	23	28	38	10	0	
STEP/BEDROCK	1	9	6.9	0.20	61	0	0	0	0	0	0	100	
STEP/BOULDERS	4	10	3.7	0.21	56	0	1	15	31	40	13	0	
STEP/COBBLE	1	2	3.5	0.07	7	0	5	84	5	5	0	0	
STEP/LOG	3	1	5.1	0.19	7	0	7	55	19	16	3	0	
Total:	55	636	5.2	0.42	3,505	0	Avg	4	24	23	26	15	

HABITAT SUMMARY								
Habitat Group	Number	Total	Avg	Avg	Wetted Area		Large Boulders	
					Units	Length	Width	Depth
		(m)	(m)	(m)				
Dammed & BW Pools	5	64	6.8	0.67	482	13.74%	0	0.0
Scour Pools	18	180	5.0	0.69	901	25.70%	0	0.0
Glides	0	0			0	0.00%	0	0.0
Riffles	16	241	5.1	0.25	1,257	35.87%	0	0.0
Rapids	7	129	5.6	0.29	734	20.94%	0	0.0
Cascades	0	0			0	0.00%	0	0.0
Step/Falls	9	22	4.5	0.18	131	3.75%	0	0.0
Dry	0	0			0	0.00%	0	0.0
Culverts	0	0			0	0.00%	0	0.0

POOL SUMMARY		
	Total	# / Km
All Pools:	23	37.6
Pools >=1m deep:	2	3.3
Complex pools (LWD pieces>=3):	12	19.6
Pool frequency (channel widths/pool):	3.1	
Residual pool depth (avg):	0.43	

STREAM SUMMARY

KNIFE CREEK UPPER POST-TX (MS-164)

Number Units	Total Length (m)	Avg Width (m)	Avg Depth (m)	Total Area (m ²)	Substrate Percent Wetted Area						Large Boulders (#>0.5m)
					S/O	Snd	Grvl	Cbl	Bldr	Bdrk	
55	636	5.2	0.42	3,505	4	24	23	26	9	15	

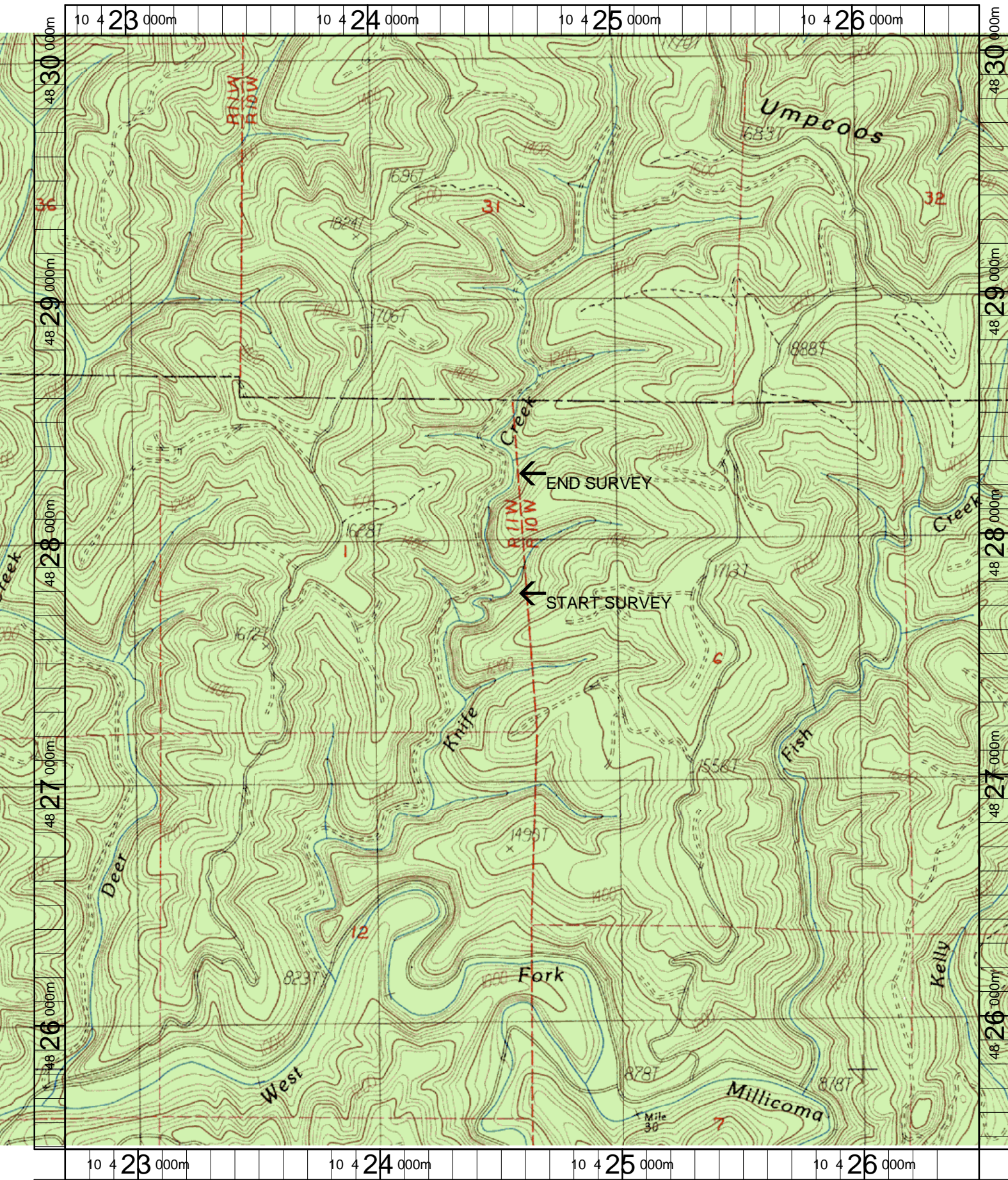
Habitat Group	Wetted Area	
	(m ²)	Percent
Dammed & BW Pools	482	13.74%
Scour Pools	901	25.70%
Glides	0	0.00%
Riffles	1,257	35.87%
Rapids	734	20.94%
Cascades	0	0.00%
Step/Falls	131	3.75%
Dry	0	0.00%
Culverts	0	0.00%

Comment Summary

Restoration Monitoring Sites 2003

MONITORING AREA: 3-MS SITE ID: 164 KNIFE CREEK UPPER POST-TX (MS-164)

UNIT#	TYPE	CHAN	DIST. (m)	COMMENTS	NOTE ESTIMATOR	NOTE NUMERATOR
1	SR	00	8.9		T=9C, H=1.4	
2	RR	00	18.3	SS/		
5	LP	00	65	SS/		
6	RI	00	87.9	HS	ORANGE FLAG P4	
11	DP	00	139.7		DJ FORMING POOL	
13	SL	00	148.4		H=0.3	
16	RI	00	203.1	SS/, /SS		
20	SB	00	257.3		H=0.4	
24	RB	00	289.4		SIGN=P2	
25	DP	01	299	DJ		
32	RI	00	364.5	DJ		
34	SL	01	374.3		H=0.32	
35	SB	11	374.3	TJ/	H=1.1	
41	RI	00	468.7		CUT TIMBER RT	
43	LP	00	494.5		SIGN=#33	
44	LP	00	502.2	/SS		
47	SL	01	524.1		H=0.7	
50	SC	02	524.1		P1=SIGN, H=0.4	
51	DP	00	551.1	DJ		
55	LP	00	611.8	/TJ		



Name: ELK PEAK
 Date: 3/20/2003
 Scale: 1 inch equals 1666 feet

Location: 10 424607 E 4827778 N
 Caption: KINFE CREEK UPPER RESTORATION SITE - MILLICOMA BASIN