

REACH

T22S-R10W-S25NE

REACH

Valley and Channel Summary

Valley Characteristics (Percent Reach Length)

<u>Narrow Valley Floor</u>		<u>Broad Valley Floor</u>	
Steep V-shape	0%	Constraining Terraces	100%
Moderate V-shape	0%	Multiple Terraces	0%
Open V-shape	0%	Wide Floodplain	0%
Valley Width Index	5.2	VWI Range:	2 - 10

Channel Morphology (Percent Reach Length)

<u>Constrained</u>		<u>Unconstrained</u>	
Hillslope	0%	Single Channel	0%
Bedrock	0%	Multiple Channel	0%
Terrace	0%	Braided Channel	0%
Alt. Terrace/Hill	100%		
Landuse	0%		

Channel Characteristics

<u>Type</u>	<u>Length (m)</u>	<u>Area (m2)</u>	<u>Dry Units</u>
Primary	538	2,801	0
Secondary	23	41	0

Channel Dimensions (m)

<u>Wetted</u>		<u>Active</u>		<u>Floodprone</u>	<u>First Terrace</u>
Width	4.6	Width	7.2	13.4	13.4
Depth	0.45	Height	0.6	1.2	2.1
		W:D ratio	12.9	Entrenchment	1.9
Stream Flow Type:	MF	Water temp (C):	7.5	-	7.5
Avg. Unit Gradient:	3.1%	Habitat Units/100m:	10.6		

Riparian, Bank, and Wood Summary

	<u>Primary</u>	<u>Secondary</u>
Land Use:	ST	
Riparian Vegetation:	M30	G

Bank Condition and Shade

<u>Bank Status</u>	<u>Percent Reach Length</u>	<u>Shade (% of 180)</u>
Actively Eroding:		Reach avg:
Undercut Banks:		Range: -

Large Wood Debris

	<u>Total</u>	<u>Total / 100m</u>
All pieces (>=3m x 0.15m):	179	33.2
Volume (m ³):	219	40.7
Key pieces (>=10m x 0.60m):	3	0.6

OREGON DEPARTMENT OF FISH AND WILDLIFE

FALL CREEK TRIB A PRE-TX (MS-162)

HABITAT INVENTORY

Report Date: 5/6/03

Survey Date:

1/29/03

REACH		T22S-R10W-S25NE					REACH					
Habitat Type	Number Units	HABITAT DETAIL					Substrate					
		Total	Avg	Avg	Total	Large	Percent Wetted Area					
		Length (m)	Width (m)	Depth (m)	Area (m ²)	Boulders (#>0.5m)	S/O	Snd	Grvl	Cbl	Bldr	Bdrk
CASCADE/BOULDERS	1	3	6.6	0.20	20	0	0	13	9	9	70	0
CULVERT CROSSING	1	21	3.5	0.22	72	0	0	5	0	11	84	0
POOL-ISOLATED	1	7	0.6	0.12	4	0	95	0	0	5	0	0
POOL-LATERAL SCOUR	6	60	5.3	0.97	340	0	22	53	20	3	2	0
POOL-PLUNGE	7	37	4.4	0.81	176	0	19	31	15	7	18	11
POOL-STRAIGHT SCOUR	1	6	4.1	0.70	26	0	10	45	35	10	0	0
RAPID/BEDROCK	2	33	5.2	0.18	162	0	0	5	5	5	5	81
RAPID/BOULDERS	2	11	2.8	0.39	31	0	3	3	16	34	44	0
RIFFLE	24	376	4.9	0.36	1,971	0	8	37	32	14	6	3
STEP/BEDROCK	1	0	3.1	0.02	0	0	0	0	0	0	0	100
STEP/BOULDERS	1	0	2.2	0.30	1	0	0	5	15	15	65	0
STEP/LOG	10	8	4.7	0.30	39	0	18	43	14	15	6	3
Total:	57	562	4.6	0.45	2,842	0	Avg 13	34	22	12	11	8

HABITAT SUMMARY								
Habitat Group	Number Units	Total Length (m)	Avg Width (m)	Avg Depth (m)	Wetted Area		Large Boulders	
					(m ²)	Percent	Number	(# / 100m ²)
Dammed & BW Pools	1	7	0.6	0.12	4	0.14%	0	0.0
Scour Pools	14	103	4.8	0.87	541	19.03%	0	0.0
Glides	0	0			0	0.00%	0	0.0
Riffles	24	376	4.9	0.36	1,971	69.37%	0	0.0
Rapids	4	44	4.0	0.28	193	6.78%	0	0.0
Cascades	1	3	6.6	0.20	20	0.72%	0	0.0
Step/Falls	12	9	4.4	0.28	40	1.42%	0	0.0
Dry	0	0			0	0.00%	0	0.0
Culverts	1	21	3.5	0.22	72	2.52%	0	0.0

POOL SUMMARY

	<u>Total</u>	<u># / Km</u>
All Pools:	15	27.9
Pools >=1m deep:	4	7.4
Complex pools (LWD pieces>=3):	5	9.3
Pool frequency (channel widths/pool):	5.2	
Residual pool depth (avg):	0.52	

STREAM SUMMARY

FALL CREEK TRIB A PRE-TX (MS-162)

Number Units	Total Length (m)	Avg Width (m)	Avg Depth (m)	Total Area (m ²)	Substrate Percent Wetted Area						Large Boulders (>0.5m)
					S/O	Snd	Grvl	Cbl	Bldr	Bdrk	
57	562	4.6	0.45	2,842	13	34	22	12	11	8	

Habitat Group	Wetted Area	
	(m ²)	Percent
Dammed & BW Pools	4	0.14%
Scour Pools	541	19.03%
Glides	0	0.00%
Riffles	1,971	69.37%
Rapids	193	6.78%
Cascades	20	0.72%
Step/Falls	40	1.42%
Dry	0	0.00%
Culverts	72	2.52%

Comment Summary

Restoration Monitoring Sites 2003

MONITORING AREA: 3-MS SITE ID: 162 FALL CREEK TRIB A PRE-TX (MS-162)

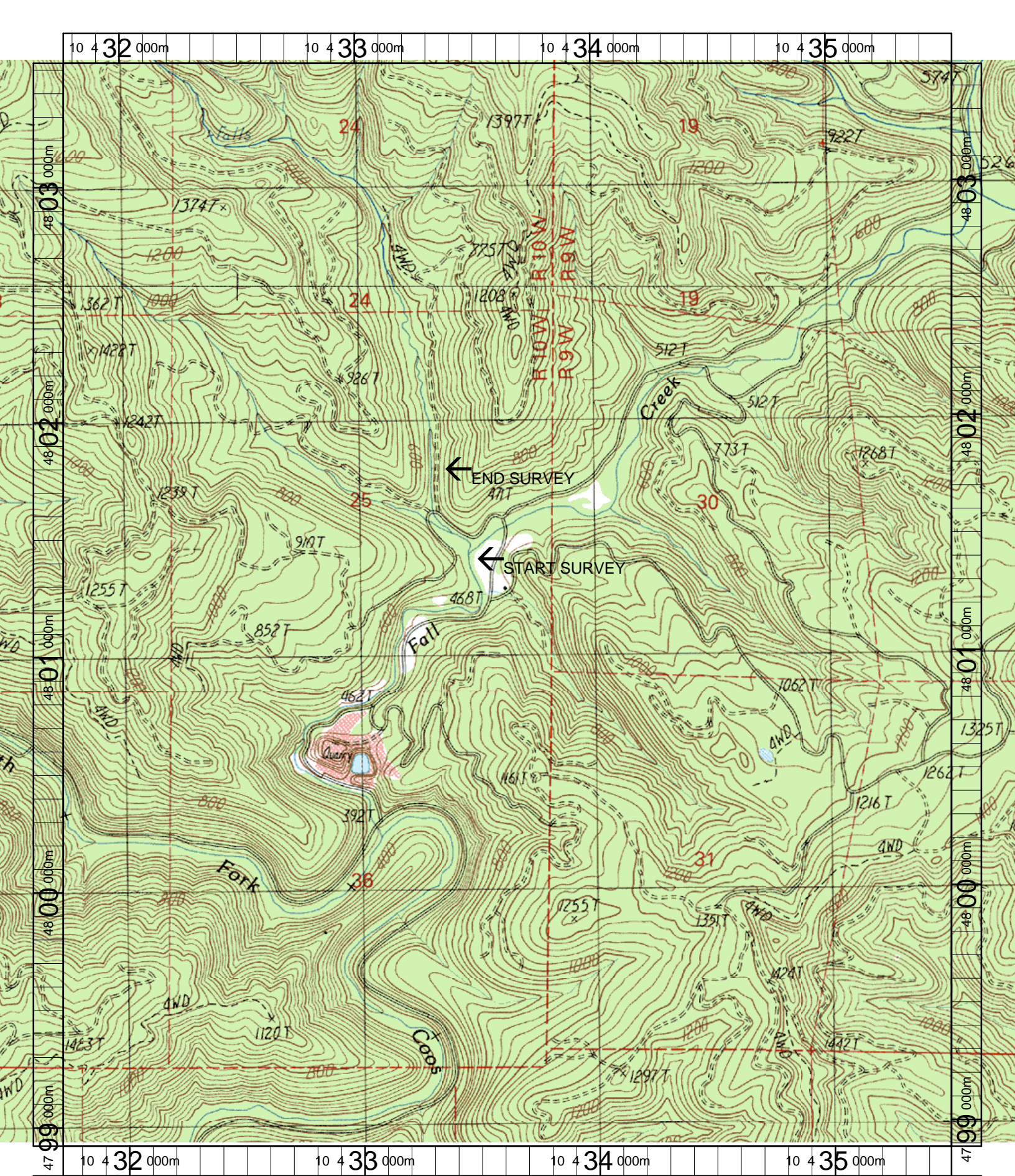
<u>UNIT#</u>	<u>TYPE</u>	<u>CHAN</u>	<u>DIST. (m)</u>	<u>COMMENTS</u>	<u>NOTE ESTIMATOR</u>	<u>NOTE NUMERATOR</u>
1	PP	00	7		CWA TRIB 28 SEG #1200	
2	SR	00	7.1		AIP 1/29/02 UNNAMED	
3	RR	00	33.4		TRIB LEFT A 223M	
4	RR	00	39.9		U2=BORDERLINE STEP?	
5	RI	00	64.5		DJ AT END	
6	PP	00	73.4	DJ		
7	SL	00	74.1	DJ		
9	RI	00	119.1	SS/		
10	LP	00	127.1	WL	STHD	
12	RI	00	164.8		GRV TO TOP *3.6M	
13	RI	00	180.7	WL	ELK TRACKS	
14	RI	00	189.7	SS/	CBL+SAND	
15	RI	00	211.4	SS/, WL	CABLE, ELK TRACKS	
17	RI	00	242.6	SS/		
18	PP	11	242.6		CABLE, STEEL ROD, FLA	
19	CC	00	263.1	CC	1.1M CULVERT, NO DROP	
21	RI	00	285.6		STEEL PIPE, OLD SIGN	
22	RI	00	299.2		OLD RUBBER HOSE	
23	SL	00	300.2		H=.22M	
33	IP	10	377.8	/SS	FORMED BY SEEP	
35	RI	02	383.5	/LS, DJ		

Comment Summary

Restoration Monitoring Sites 2003

MONITORING AREA: 3-MS SITE ID: 162 FALL CREEK TRIB A PRE-TX (MS-162)

<u>UNIT#</u>	<u>TYPE</u>	<u>CHAN</u>	<u>DIST. (m)</u>	<u>COMMENTS</u>	<u>NOTE ESTIMATOR</u>	<u>NOTE NUMERATOR</u>
38	RI	01	395.9	DJ		
42	RI	01	409.1	DJ, /SS,CE	/POOL HABITAT	
43	SL	00	410.1	DJ		
44	RI	00	420.6	DJ		
45	RI	00	443.7	SS/	NO TERRACES	
48	RI	00	465.1	WL	ELK TRACKS	
50	LP	00	484.7	SS/, WL	HARDPAN, ELK TRACKS	
52	LP	00	500.5	SS/, WL	ELK TRACKS	
54	SL	00	520.6	DJ		
55	LP	00	532.1	DJ		



Name: TIOGA
 Date: 3/20/2003
 Scale: 1 inch equals 1666 feet

Location: 10 433623 E 4801212 N
 Caption: FALL CREEK TRIBUTARY A RESTORATION SITE - COOS
 BASIN