

REACH

T23S-R11W-S01SE

REACH

Valley and Channel Summary

Valley Characteristics (Percent Reach Length)

<u>Narrow Valley Floor</u>		<u>Broad Valley Floor</u>	
Steep V-shape	0%	Constraining Terraces	100%
Moderate V-shape	0%	Multiple Terraces	0%
Open V-shape	0%	Wide Floodplain	0%
Valley Width Index	3.4	VWI Range:	1.6 - 5.2

Channel Morphology (Percent Reach Length)

<u>Constrained</u>		<u>Unconstrained</u>	
Hillslope	0%	Single Channel	0%
Bedrock	0%	Multiple Channel	0%
Terrace	0%	Braided Channel	0%
Alt. Terrace/Hill	100%		
Landuse	0%		

Channel Characteristics

<u>Type</u>	<u>Length (m)</u>	<u>Area (m2)</u>	<u>Dry Units</u>
Primary	529	2,905	0
Secondary	16	28	0

Channel Dimensions (m)

<u>Wetted</u>		<u>Active</u>		<u>Floodprone</u>	<u>First Terrace</u>
Width	5.1	Width	10.7	16.7	14.1
Depth	0.39	Height	0.7	1.3	2.1
		W:D ratio	16.9	Entrenchment	1.5

Stream Flow Type:	MF	Water temp (C):	7.0 - 7.0
Avg. Unit Gradient:	3.1%	Habitat Units/100m:	8.3

Riparian, Bank, and Wood Summary

	<u>Primary</u>	<u>Secondary</u>
Land Use:	LT	TH
Riparian Vegetation:	D15	C30

Bank Condition and Shade

<u>Bank Status</u>	<u>Percent Reach Length</u>	<u>Shade (% of 180)</u>
Actively Eroding:		Reach avg:
Undercut Banks:		Range: -

Large Wood Debris

	<u>Total</u>	<u>Total / 100m</u>
All pieces (>=3m x 0.15m):	34	6.4
Volume (m ³):	88	16.7
Key pieces (>=10m x 0.60m):	6	1.1

OREGON DEPARTMENT OF FISH AND WILDLIFE

KNIFE CREEK LOWER POST-TX (MS-161)

HABITAT INVENTORY

Report Date: 5/6/03

Survey Date:

2/18/03

REACH		T23S-R11W-S01SE					REACH					
Habitat Type	Number Units	HABITAT DETAIL					Substrate					
		Total	Avg	Avg	Total	Large	Percent Wetted Area					
		Length (m)	Width (m)	Depth (m)	Area (m ²)	Boulders (#>0.5m)	S/O	Snd	Grvl	Cbl	Bldr	Bdrk
CASCADE/BEDROCK	2	36	4.7	0.38	179	0	0	0	2	2	3	92
POOL-DAMMED	1	8	6.3	0.80	47	0	10	30	30	5	5	20
POOL-ISOLATED	1	1	0.4	0.50	0	0	30	70	0	0	0	0
POOL-LATERAL SCOUR	9	88	4.9	0.66	491	0	5	24	22	16	7	25
RAPID/BEDROCK	11	175	4.7	0.32	911	0	1	11	11	13	7	56
RAPID/BOULDERS	5	76	6.3	0.31	453	0	1	13	24	35	21	6
RIFFLE	12	145	5.1	0.30	753	0	1	15	21	24	12	26
RIFFLE W/ POCKETS	2	16	5.9	0.34	93	0	0	12	26	33	15	14
STEP/BEDROCK	1	1	5.3	0.01	5	0	0	0	0	0	0	100
Total:	44	545	5.1	0.39	2,933	0	Avg 3	16	18	19	10	35

HABITAT SUMMARY									
Habitat Group	Number Units	Total Length (m)	Avg Width (m)	Avg Depth (m)	Wetted Area		Large Boulders		
					(m ²)	Percent	Number	(# / 100m ²)	
Dammed & BW Pools	2	8	3.4	0.65	48	1.62%	0	0.0	
Scour Pools	9	88	4.9	0.66	491	16.76%	0	0.0	
Glides	0	0			0	0.00%	0	0.0	
Riffles	14	161	5.2	0.30	846	28.84%	0	0.0	
Rapids	16	250	5.2	0.32	1,363	46.49%	0	0.0	
Cascades	2	36	4.7	0.38	179	6.11%	0	0.0	
Step/Falls	1	1	5.3	0.01	5	0.18%	0	0.0	
Dry	0	0			0	0.00%	0	0.0	
Culverts	0	0			0	0.00%	0	0.0	

POOL SUMMARY		
	<u>Total</u>	<u># / Km</u>
All Pools:	11	20.8
Pools >=1m deep:	1	1.9
Complex pools (LWD pieces>=3):	1	1.9
Pool frequency (channel widths/pool):	4.6	
Residual pool depth (avg):	0.40	

STREAM SUMMARY

KNIFE CREEK LOWER POST-TX (MS-161)

Number Units	Total Length (m)	Avg Width (m)	Avg Depth (m)	Total Area (m ²)	Substrate Percent Wetted Area						Large Boulders (>0.5m)
					S/O	Snd	Grvl	Cbl	Bldr	Bdrk	
44	545	5.1	0.39	2,933	3	16	18	19	10	35	

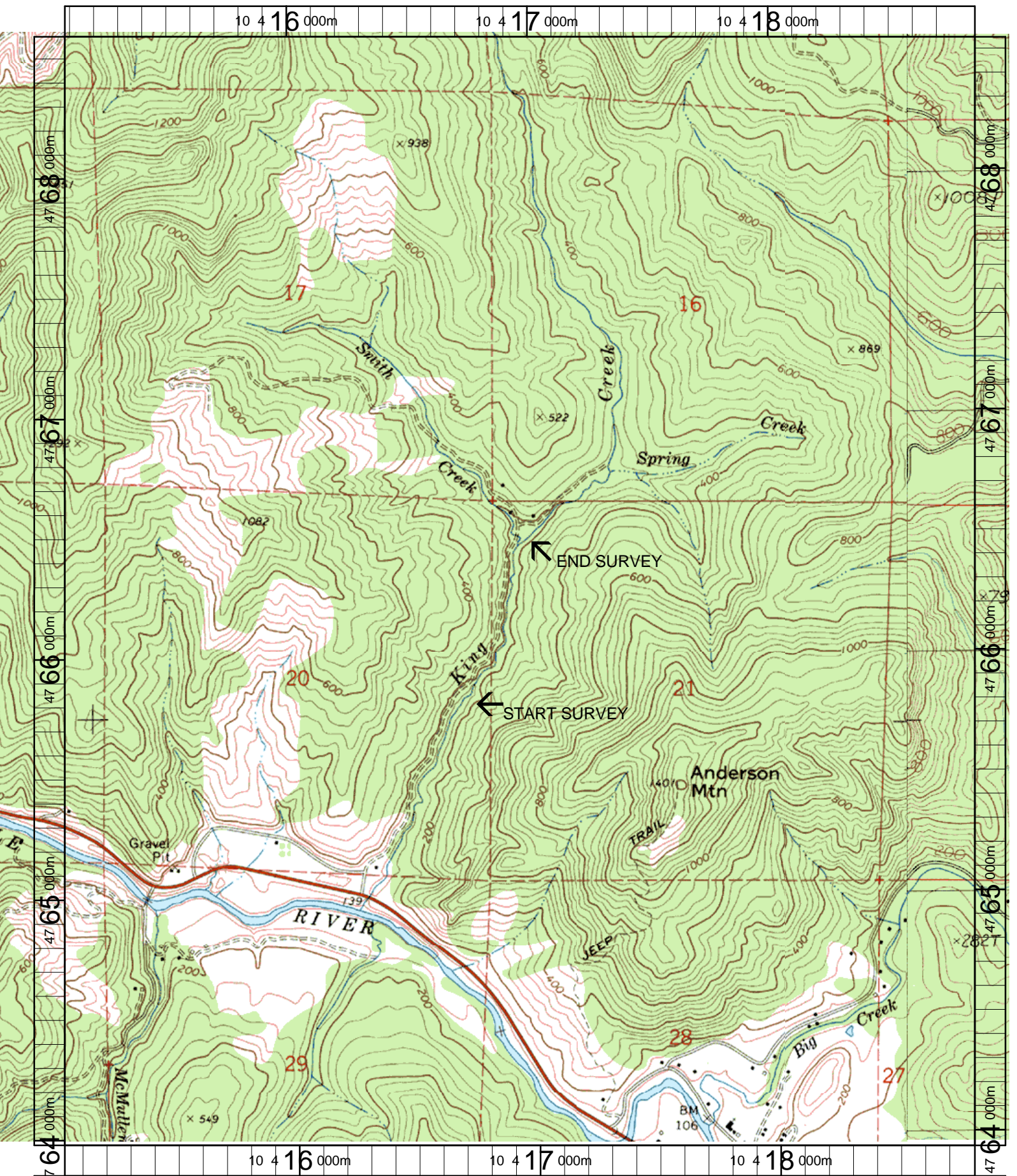
Habitat Group	Wetted Area	
	(m ²)	Percent
Dammed & BW Pools	48	1.62%
Scour Pools	491	16.76%
Glides	0	0.00%
Riffles	846	28.84%
Rapids	1,363	46.49%
Cascades	179	6.11%
Step/Falls	5	0.18%
Dry	0	0.00%
Culverts	0	0.00%

Comment Summary

Restoration Monitoring Sites 2003

MONITORING AREA: 3-MS SITE ID: 161 KNIFE CREEK LOWER POST-TX (MS-161)

UNIT#	TYPE	CHAN	DIST. (m)	COMMENTS	NOTE ESTIMATOR	NOTE NUMERATOR
1	RI	00	5.4		T=8C	
4	RB	00	46.8	/SS, SS/		
5	RI	00	64.2	SS/, /SS	50M SIGN	
7	SR	00	76.6	SS/, /SS		
8	RI	00	86.2		OVER BEDROCK	
10	RR	00	117.8	SS/, /SS		
11	RI	00	131.5	SS/, /SS		
12	RB	00	155.5	/SS, /WL	ELK	
14	RR	00	170	/WL	ELK	
17	RR	00	205	/SS, /SS		
18	CR	00	230	/SS, SS/	200M FLAG	
19	RR	00	236		SPAWNING SIGN/	
25	RI	01	323.6	/SS, /SS		
26	IP	10	323.6		300M SIGN	
34	DP	00	373.9		LOG JAM-HUGE LOG	
36	RB	00	408.9		.5M DROP IN WATER	
39	RI	00	467.8		SIGN #37	



Name: BRIDGE
 Date: 3/20/2003
 Scale: 1 inch equals 1666 feet

Location: 10 416938 E 4766267 N
 Caption: KING CREEK (LOWER) RESTORATION SITE - MF
 COQUILLE BASIN