



OREGON DEPARTMENT OF FISH AND WILDLIFE

BEAR CREEK POST-TX (MS-125)

HABITAT INVENTORY

Report Date: 5/6/03

Survey Date:

3/3/03

REACH		T29S-R14W-S12SE						REACH					
HABITAT DETAIL													
Habitat Type	Number Units	Total Length (m)	Avg Width (m)	Avg Depth (m)	Total Area (m <sup>2</sup> )	Large Boulders (#>0.5m)	Substrate Percent Wetted Area						
							S/O	Snd	Grvl	Cbl	Bldr	Bdrk	
CASCADE/BOULDERS	1	6	0.5	0.03	3	0	0	15	40	40	5	0	
POOL-BACKWATER	6	40	2.4	0.48	88	0	70	18	11	1	0	0	
POOL-ISOLATED	4	24	1.5	0.22	38	0	54	26	19	1	0	0	
POOL-LATERAL SCOUR	26	549	5.8	1.02	3,159	0	40	36	21	2	0	1	
RIFFLE	21	409	4.2	0.22	1,818	0	8	44	43	4	0	0	
<b>Total:</b>	<b>58</b>	<b>1,028</b>	<b>4.5</b>	<b>0.60</b>	<b>5,105</b>	<b>0</b>	<b>Avg 32</b>	<b>36</b>	<b>28</b>	<b>4</b>	<b>0</b>	<b>0</b>	

HABITAT SUMMARY									
Habitat Group	Number Units	Total Length (m)	Avg Width (m)	Avg Depth (m)	Wetted Area		Large Boulders		
					(m <sup>2</sup> )	Percent	Number	(# / 100m <sup>2</sup> )	
Dammed & BW Pools	10	64	2.0	0.37	125	2.46%	0	0.0	
Scour Pools	26	549	5.8	1.02	3,159	61.88%	0	0.0	
Glides	0	0			0	0.00%	0	0.0	
Riffles	21	409	4.2	0.22	1,818	35.61%	0	0.0	
Rapids	0	0			0	0.00%	0	0.0	
Cascades	1	6	0.5	0.03	3	0.05%	0	0.0	
Step/Falls	0	0			0	0.00%	0	0.0	
Dry	0	0			0	0.00%	0	0.0	
Culverts	0	0			0	0.00%	0	0.0	

POOL SUMMARY		
	Total	# / Km
All Pools:	36	38.1
Pools >=1m deep:	14	14.8
Complex pools (LWD pieces>=3):	19	20.1
Pool frequency (channel widths/pool):	3.3	
Residual pool depth (avg):	0.72	

**STREAM SUMMARY**

**BEAR CREEK POST-TX (MS-125)**

Number Units	Total Length (m)	Avg Width (m)	Avg Depth (m)	Total Area (m <sup>2</sup> )	Substrate Percent Wetted Area						Large Boulders (>0.5m)
					S/O	Snd	Grvl	Cbl	Bldr	Bdrk	
58	1,028	4.5	0.60	5,105	32	36	28	4	0	0	

Habitat Group	Wetted Area	
	(m <sup>2</sup> )	Percent
Dammed & BW Pools	125	2.46%
Scour Pools	3,159	61.88%
Glides	0	0.00%
Riffles	1,818	35.61%
Rapids	0	0.00%
Cascades	3	0.05%
Step/Falls	0	0.00%
Dry	0	0.00%
Culverts	0	0.00%

# Comment Summary

## Restoration Monitoring Sites 2003

**MONITORING AREA: 3-MS    SITE ID: 125    BEAR CREEK POST-TX (MS-125)**

<u>UNIT#</u>	<u>TYPE</u>	<u>CHAN</u>	<u>DIST. (m)</u>	<u>COMMENTS</u>	<u>NOTE ESTIMATOR</u>	<u>NOTE NUMERATOR</u>
1	LP	00	20.9	WL, DJ		RACCOON TRACKS
3	LP	00	57	WL		DEER TRACKS
5	LP	00	102.2	WL		RACCOON TRACKS
7	LP	00	118.7	WL		DEER TRACKS, FLAG-OD
8	LP	00	145.4	WL		DEER TRACKS
9	RI	00	176			1-REDD
10	LP	00	199.3	WL		DEER TRACKS, GAME TR
11	RI	00	224.1	HS		YELLOW FLAGGING-R3
12	LP	00	267.9			YELLOW FLAGGING E1
14	BW	10	267.9	WL		DEER TRACKS
15	RI	00	274.1	/SS		
16	IP	10	274.1			ORANGE FLAGGING BEF
17	LP	00	286.4	HS		
18	LP	00	315.3	WL		DEER, RACCOON TRACK
20	LP	00	340.3	HS, LI		
21	RI	00	354.5	BV, HS, DJ		PINK FLAG P6
22	LP	00	362.7	/TJ, HS		T=8.2C
23	CB	11	362.7			T=8C, CB OVER CBL
26	IP	10	378	WL		RACCOON TRACKS
27	LP	00	390.1			DJ
28	RI	00	413.5	SS, HS		YELLOW FLAG-E2, PINK F

# Comment Summary

## Restoration Monitoring Sites 2003

**MONITORING AREA: 3-MS    SITE ID: 125    BEAR CREEK POST-TX (MS-125)**

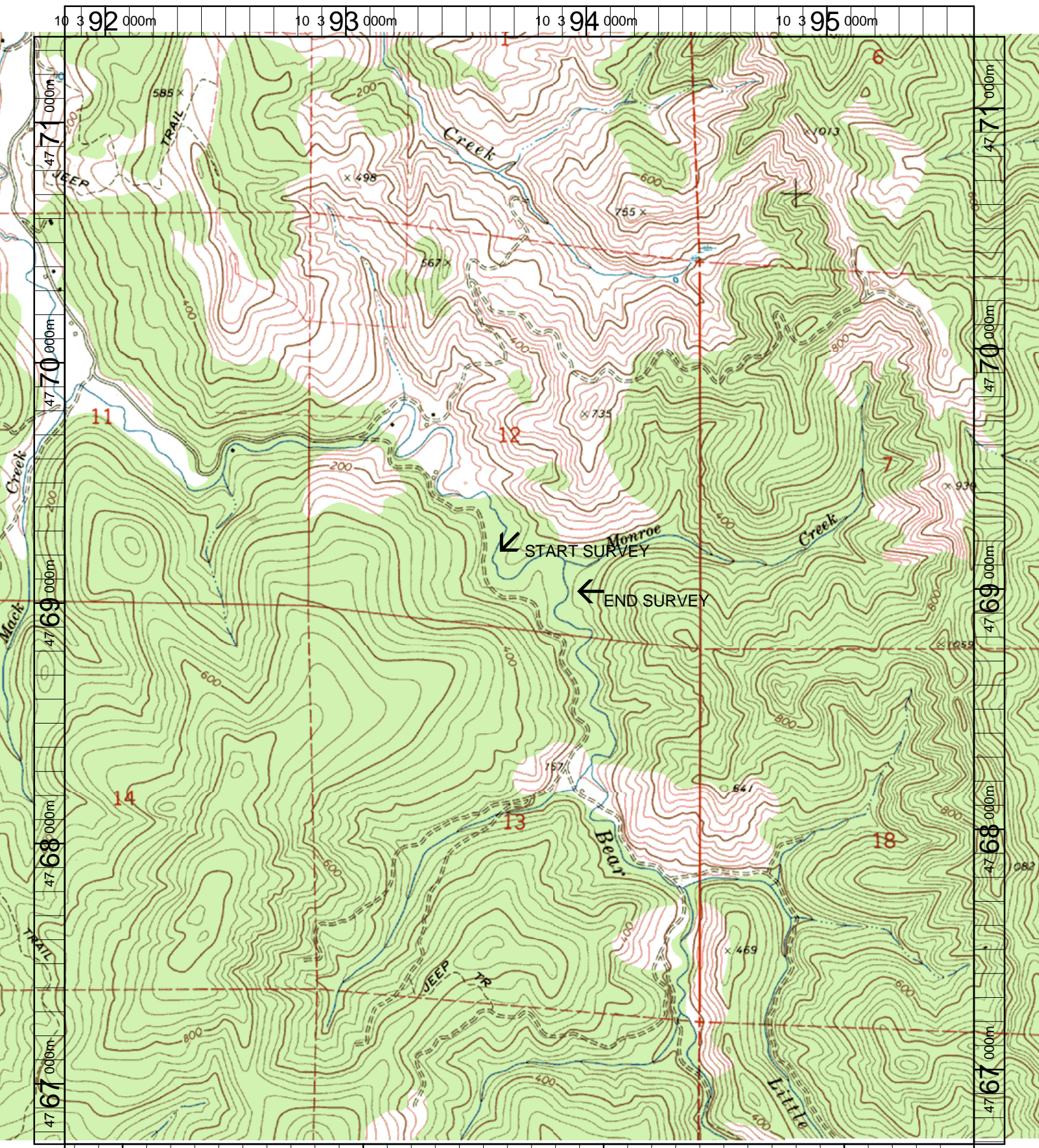
<u>UNIT#</u>	<u>TYPE</u>	<u>CHAN</u>	<u>DIST. (m)</u>	<u>COMMENTS</u>	<u>NOTE ESTIMATOR</u>	<u>NOTE NUMERATOR</u>
29	LP	00	440.9	WL	DEER, RACCOON TRACK	
30	RI	00	449.5	/SS		
31	LP	00	479.1	LS		
32	BW	10	479.1	/SS	ORANGE/BLUE FLAG-P8	
33	RI	00	523.3	WL, /SS/	DEER, RACCOON TRACK	
34	LP	00	548.1	WL, BV	DEER TRACKS, YLLW FLA	
35	RI	00	566.4		PINK FLAG P8+P9	
36	LP	00	588.1	HS	BLUE/PINK FLAG-P9	
37	RI	00	599.8	WL, SS/	TRAIL XING	
38	LP	00	616.9	BV, HS, WL	RACCOON TRACKS	
39	RI	00	629.1	HS	FLAGGING-P10, R4	
40	LP	00	641.7	WL	RACCOON TRACKS	
41	RI	00	675.9	WL	CT, TRAIL XING	
42	BW	10	675.9		FLAG-BEA-0427-10, P-11	
43	IP	10	675.9		YELLOW ROCK E5	
44	LP	00	692.4	WL	PINK P11, RACCOON TRA	
45	RI	00	722.6		P12, E6	
46	LP	00	728.9	HS		
48	LP	00	771.3	HS		
49	BW	10	771.3	WL	RACCOON TRACKS	
50	LP	00	795.8	HS, DJ	ORANGE FLAG, U49 BEC	

# Comment Summary

## Restoration Monitoring Sites 2003

**MONITORING AREA: 3-MS    SITE ID: 125    BEAR CREEK POST-TX (MS-125)**

<b>UNIT#</b>	<b>TYPE</b>	<b>CHAN</b>	<b>DIST. (m)</b>	<b>COMMENTS</b>	<b>NOTE ESTIMATOR</b>	<b>NOTE NUMERATOR</b>
51	LP	00	805.6	HS	U49=P14	
52	RI	00	844.6	TJ/	U50=P14	
53	RI	11	844.6		T=9C, U53	
54	IP	10	844.6		5% BRK=HARDPAN	
55	LP	00	864.7	WL	RACCOON TRACKS, MON	
56	RI	00	889.9		U52=BEFSU-15	
57	LP	00	911.9		U52=BEC-2, 3 TREES	
58	LP	00	944.2	WL, HS, BV	U56=CABLE XING (OLD F	



Name: BILL PEAK  
 Date: 3/20/2003  
 Scale: 1 inch equals 1666 feet

Location: 10 393681 E 4769027 N  
 Caption: BEAR CREEK RESTORATION SITE- COQUILLE BASIN