

REACH

T20S-R07W-S04SW

REACH

Valley and Channel Summary

Valley Characteristics (Percent Reach Length)

<u>Narrow Valley Floor</u>		<u>Broad Valley Floor</u>	
Steep V-shape	0%	Constraining Terraces	0%
Moderate V-shape	0%	Multiple Terraces	100%
Open V-shape	0%	Wide Floodplain	0%
Valley Width Index	5.0	VWI Range:	4 - 6

Channel Morphology (Percent Reach Length)

<u>Constrained</u>		<u>Unconstrained</u>	
Hillslope	0%	Single Channel	0%
Bedrock	0%	Multiple Channel	0%
Terrace	0%	Braided Channel	0%
Alt. Terrace/Hill	100%		
Landuse	0%		

Channel Characteristics

<u>Type</u>	<u>Length (m)</u>	<u>Area (m2)</u>	<u>Dry Units</u>
Primary	528	2,607	0
Secondary	68	162	1

Channel Dimensions (m)

<u>Wetted</u>		<u>Active</u>		<u>Floodprone</u>	<u>First Terrace</u>
Width	4.6	Width	8.1	13.6	15.7
Depth	0.40	Height	0.5	0.9	1.5
		W:D ratio	17.5	Entrenchment	1.7

Stream Flow Type: MF Water temp (C): 7.5 - 7.5
 Avg. Unit Gradient: 1.3% Habitat Units/100m: 6.8

Riparian, Bank, and Wood Summary

	<u>Primary</u>	<u>Secondary</u>
Land Use:	ST	
Riparian Vegetation:	D15	S

Bank Condition and Shade

<u>Bank Status</u>	<u>Percent Reach Length</u>	<u>Shade (% of 180)</u>
Actively Eroding:		Reach avg:
Undercut Banks:		Range: -

Large Wood Debris

	<u>Total</u>	<u>Total / 100m</u>
All pieces (>=3m x 0.15m):	89	16.8
Volume (m ³):	126	23.9
Key pieces (>=10m x 0.60m):	8	1.5

OREGON DEPARTMENT OF FISH AND WILDLIFE

OXBOW CREEK POST-TX (MC-53)

HABITAT INVENTORY

Report Date: 5/6/03

Survey Date:

2/3/03

REACH		T20S-R07W-S04SW					REACH					
HABITAT DETAIL												
Habitat Type	Number Units	Total Length (m)	Avg Width (m)	Avg Depth (m)	Total Area (m ²)	Large Boulders (#>0.5m)	Substrate Percent Wetted Area					
							S/O	Snd	Grvl	Cbl	Bldr	Bdrk
POOL-ISOLATED	1	7	1.3	0.30	9	0	68	32	0	0	0	0
POOL-LATERAL SCOUR	16	232	5.0	0.62	1,214	0	6	18	28	6	0	41
PUDDLED UNIT	1	61	2.5	0.15	153	0	11	22	44	0	0	22
RAPID/BEDROCK	3	66	5.3	0.22	356	0	0	5	4	2	0	90
RIFFLE	12	222	4.2	0.26	987	0	3	7	56	18	3	12
STEP/COBBLE	1	6	6.0	0.20	36	0	5	5	90	0	0	0
STEP/STRUCTURE	2	3	4.5	0.15	14	0	8	40	31	0	0	21
Total:	36	596	4.6	0.40	2,768	0	Avg 7	15	37	9	1	32

HABITAT SUMMARY								
Habitat Group	Number Units	Total Length (m)	Avg Width (m)	Avg Depth (m)	Wetted Area		Large Boulders	
					(m ²)	Percent	Number	(# / 100m ²)
Dammed & BW Pools	1	7	1.3	0.30	9	0.33%	0	0.0
Scour Pools	16	232	5.0	0.62	1,214	43.84%	0	0.0
Glides	0	0			0	0.00%	0	0.0
Riffles	12	222	4.2	0.26	987	35.67%	0	0.0
Rapids	3	66	5.3	0.22	356	12.87%	0	0.0
Cascades	0	0			0	0.00%	0	0.0
Step/Falls	3	9	5.0	0.17	50	1.79%	0	0.0
Dry	1	61	2.5	0.15	153	5.51%	0	0.0
Culverts	0	0			0	0.00%	0	0.0

POOL SUMMARY		
	<u>Total</u>	<u># / Km</u>
All Pools:	17	32.2
Pools >=1m deep:	0	0.0
Complex pools (LWD pieces>=3):	6	11.4
Pool frequency (channel widths/pool):	4.3	
Residual pool depth (avg):	0.34	

STREAM SUMMARY

OXBOW CREEK POST-TX (MC-53)

Number Units	Total Length (m)	Avg Width (m)	Avg Depth (m)	Total Area (m ²)	Substrate Percent Wetted Area						Large Boulders (>0.5m)
					S/O	Snd	Grvl	Cbl	Bldr	Bdrk	
36	596	4.6	0.40	2,768	7	15	37	9	1	32	

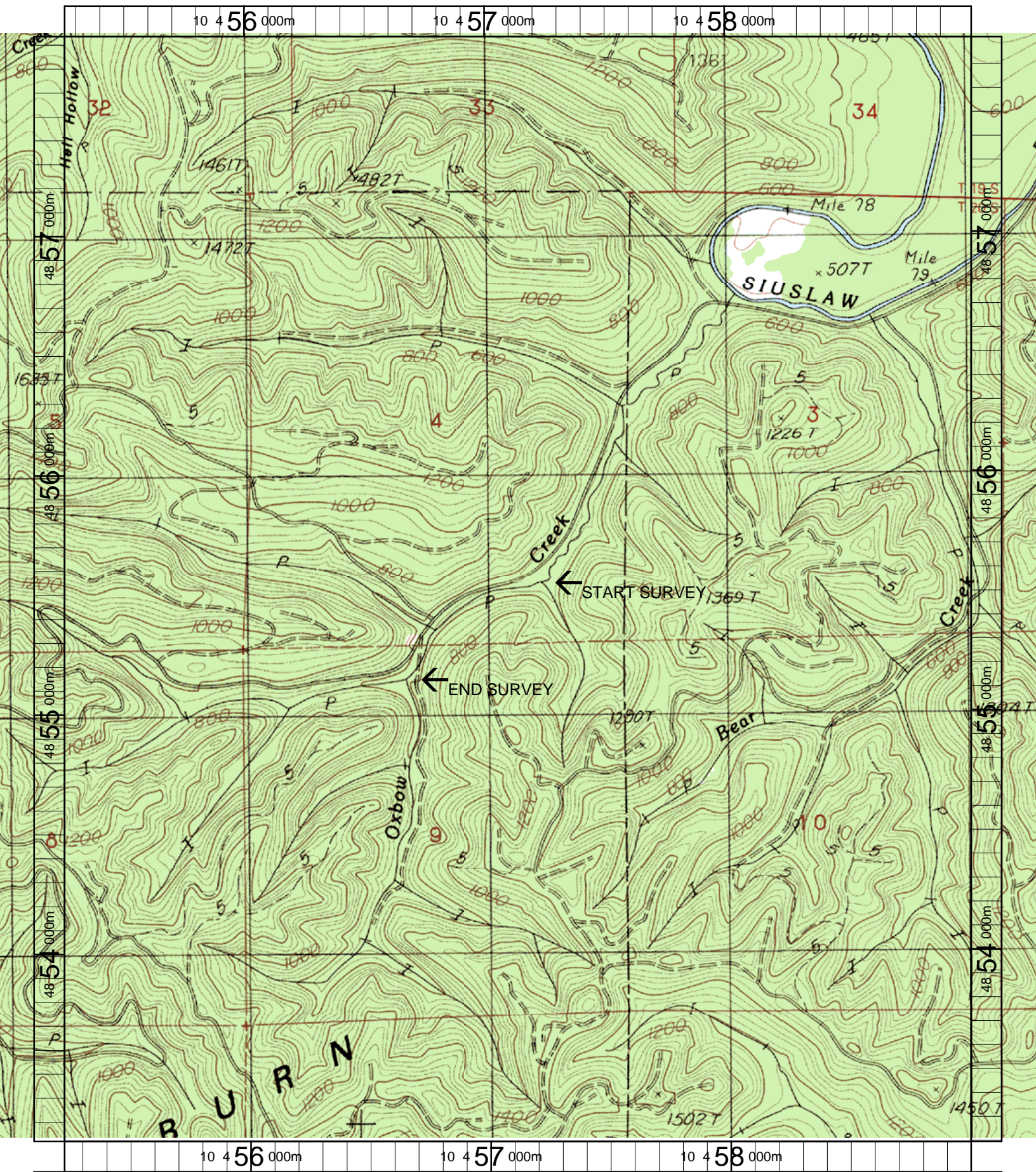
Habitat Group	Wetted Area	
	(m ²)	Percent
Dammed & BW Pools	9	0.33%
Scour Pools	1,214	43.84%
Glides	0	0.00%
Riffles	987	35.67%
Rapids	356	12.87%
Cascades	0	0.00%
Step/Falls	50	1.79%
Dry	153	5.51%
Culverts	0	0.00%

Comment Summary

Restoration Monitoring Sites 2003

MONITORING AREA: 2-MC SITE ID: 53 OXBOW CREEK POST-TX (MC-53)

<u>UNIT#</u>	<u>TYPE</u>	<u>CHAN</u>	<u>DIST. (m)</u>	<u>COMMENTS</u>	<u>NOTE ESTIMATOR</u>	<u>NOTE NUMERATOR</u>
1	RI	00	10.2		T=7.5C	
2	LP	00	23.2	HS	2 CARCASS, LOG PLACE	
3	RI	01	31.2		CARCASS	
9	RI	01	88.6	HS	LOG PLACEMENT	
10	PD	02	88.6		ACW=5.0, OLD MAIN CHN	
23	RR	00	316.4		CARCASS	
24	LP	00	331.4		RACCOON TRACKS	
28	SS	00	402.9	HS	H=0.4M, LOG PLACEMEN	
29	LP	00	431.9		.2 GRV DEPOSIT-NEW	
30	RI	00	451.9	HS	LOG PLACEMENT	
33	LP	00	496.4	HS	SITE #14-LOGS	
34	SS	00	496.9		H=0.3M	
35	RI	00	518.9		CARCASS	
36	LP	00	528.4		EOS SIGN ALDER/, T=8C	



Name: GUNTER
 Date: 3/20/2003
 Scale: 1 inch equals 1666 feet

Location: 10 457121 E 4855519 N
 Caption: OXBOW CREEK RESTORATION SITE - SIUSLAW BASIN