

ODFW AQUATIC INVENTORY PROJECT
OREGON PLAN FOR SALMON & WATERSHEDS
STREAM RESTORATION HABITAT REPORT

STREAM: Steer Creek Reach 2 (MC-354)
BASIN: Siletz River
SURVEY TYPE: Post-Tx
DATE: January 25, 2007
SURVEY CREW: Matthew Strickland, Sharon Tippery
REPORT PREPARED BY: Paul Jacobsen
BASIN AREA: 9.9 km²
USGS MAPS: Nortons
ECOREGION: Coast Range Sedimentary

GENERAL DESCRIPTION:

The Steer Creek Reach 2 habitat survey extended 1,414 meters. The channel was alternately constrained by hillslope and terrace in a broad valley floor. The average valley width index was 4.3 (range: 2.5-6). Land use for the reach was timber harvest and young timber (3-15 cm dbh). The average unit gradient was 1.0 percent. Scour pools (56%) and riffles (37%) dominated stream habitat. Gravel (36%), sand (24%) and cobble (18%) dominated stream substrate. Wood volume was moderate at 26.6 m³/100m.

COMMENTS:

There were no potential barriers to upstream fish migration in the surveyed length.

The crew noted several habitat structures during the survey.

The Steer Creek Road culvert (5.0m diameter) was recorded at 190 meters into the survey reach. 2 debris jams were noted.

Beaver activity was noted throughout the survey. Coho salmon fry, Ruffed Grouse, deer trails, and Cutthroat trout were observed during the survey.

REACH 1

T10S-R08W-S03SW

REACH 1

Valley and Channel Summary

Valley Characteristics (Percent Reach Length)

<u>Narrow Valley Floor</u>		<u>Broad Valley Floor</u>	
Steep V-shape	0%	Constraining Terraces	100%
Moderate V-shape	0%	Multiple Terraces	0%
Open V-shape	0%	Wide Floodplain	0%
Valley Width Index	4.3	VWI Range:	2.5 - 6

Channel Morphology (Percent Reach Length)

<u>Constrained</u>		<u>Unconstrained</u>	
Hillslope	0%	Single Channel	0%
Bedrock	0%	Multiple Channel	0%
Terrace	0%	Braided Channel	0%
Alt. Terrace/Hill	100%		
Landuse	0%		

Channel Characteristics

<u>Type</u>	<u>Length (m)</u>	<u>Area (m2)</u>	<u>Dry Units</u>
Primary Channel	1,414	8,494	0
Secondary Channel	0	0	0
Off-Channel Units	84	119	0

Channel Dimensions (m)

<u>Wetted</u>	<u>Active</u>	<u>Floodprone</u> n = 7	<u>First Terrace</u> n = 7
Width: 5.4	Width: 8.6	13.6 (9.4 - 24.6)	18.2 (11 - 28.8)
Depth: 0.45	Height: 0.6	1.1 (1 - 1.4)	1.5 (1.2 - 2.1)

W:D ratio: 15.1
 Stream Flow Type: MF
 Average Unit Gradient: 1.0%
 Water temperature (°C): 6.0 - 6.0

Entrenchment (ACW:FPW ratio): 1.6
 Habitat Units/100m (total channel length): 6.2
 Habitat Units/100m (primary channel length): 6.6

Riparian, Bank, and Wood Summary

	<u>Primary</u>	<u>Secondary</u>
Land Use:	TH	YT
Riparian Vegetation:	D15	S

Bank Condition and Shade

<u>Bank Status</u>	<u>Percent Reach Length</u>	<u>Shade (% of 180)</u>
Actively Eroding:		Reach avg:
Undercut Banks:		Range: -

Large Wood Debris

	<u>Total</u>	<u>Total / 100m primary channel</u>
All pieces (>=3m x 0.15m):	118	8.3
Volume (m ³):	376	26.6
Key pieces (>=12m x 0.60m):	31	2.2

OREGON DEPT OF FISH AND WILDLIFE

STEER CREEK REACH 2 POST-TX (2-MC, 354)

HABITAT INVENTORY

Report Date: 4/25/2007

Survey Date:

1/25/2007

REACH 1		T10S-R08W-S03SW					REACH 1					
HABITAT DETAIL												
Habitat Type	Number Units	Total Length (m)	Avg Width (m)	Avg Depth (m)	Total Area (m ²)	Large Boulders (#>0.5m)	Substrate Percent Wetted Area					
							S/O	Snd	Grvl	Cbl	Bldr	Bdrk
CASCADE/BEDROCK	1	5	1.5	0.10	8	0	0	15	15	0	0	70
CASCADE/BOULDERS	1	9	0.4	0.05	3	0	10	60	25	5	0	0
CULVERT CROSSING	1	20	5.0	1.00	100	0	5	29	29	10	0	29
GLIDE	1	19	4.0	0.40	77	0	10	15	30	15	0	30
POOL-BACKWATER	4	20	2.2	0.36	46	0	20	60	13	8	0	0
POOL-ISOLATED	1	3	1.8	0.25	5	0	15	15	40	30	0	0
POOL-LATERAL SCOUR	43	742	6.7	0.68	4,864	0	9	30	25	11	1	24
RAPID/BOULDERS	1	12	6.0	0.20	69	0	0	0	50	30	20	0
RIFFLE	28	621	4.9	0.24	3,222	0	2	16	48	25	2	7
STEP/BEDROCK	1	2	4.2	0.25	10	0	0	5	15	20	0	60
STEP/COBBLE	11	46	4.5	0.20	209	0	1	6	61	30	2	0
Total:	93	1,499	5.4	0.45	8,613	0	Avg: 6	24	36	18	2	15

HABITAT SUMMARY									
Habitat Group	Number Units	Total Length (m)	Avg Width (m)	Avg Depth (m)	Wetted Area		Large Boulders		
					(m ²)	Percent	Number	(# / 100m ²)	
Dammed & BW Pools	5	23	2.1	0.34	51	0.59%	0	0.0	
Scour Pools	43	742	6.7	0.68	4,864	56.47%	0	0.0	
Glides	1	19	4.0	0.40	77	0.89%	0	0.0	
Riffles	28	621	4.9	0.24	3,222	37.41%	0	0.0	
Rapids	1	12	6.0	0.20	69	0.80%	0	0.0	
Cascades	2	14	1.0	0.08	12	0.13%	0	0.0	
Step/Falls	12	49	4.5	0.20	219	2.54%	0	0.0	
Dry	0	0			0	0.00%	0	0.0	
Culverts	1	20	5.0	1.00	100	1.16%	0	0.0	

POOL SUMMARY			
	<u>Total</u>	Total of all Channel Lengths <u># / Km</u>	Primary Channel Length <u># / Km</u>
All Pools:	48	32.0	33.9
Pools >=1m deep:	3	2.0	2.1
Complex pools (LWD pieces>=3):	16	10.7	11.3
Pool frequency (channel widths/pool):	3.6		
Residual pool depth (avg):	0.45		

Comment Summary

Restoration Monitoring Sites 2007

MONITORING AREA: **2-MC** SITE ID: **354** **STEER CREEK REACH 2 POST-TX**

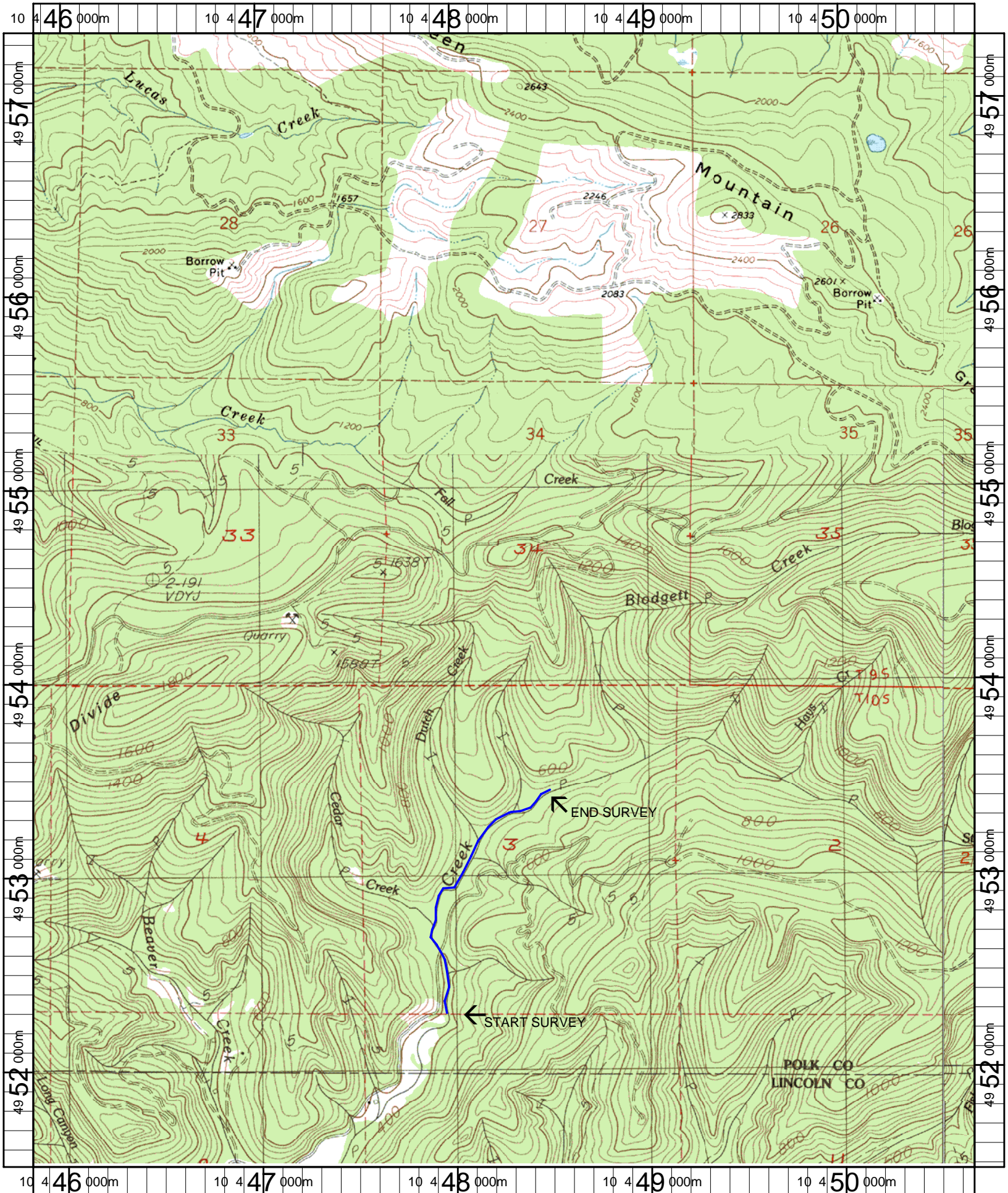
UNIT#	TYPE	CHAN	DIST. (m)	COMMENTS	NOTE ESTIMATOR
1	RI	01	11.8	/TJ	T=6.5
2	RI	11	11.8		ACW=1.4, T=7.5
3	LP	00	38.3		REACH PHOTO
4	RI	00	57.8	DJ, HS	
5	LP	00	77.3	HS	
11	LP	00	170		COHO FRY LOTS
12	CC	00	190	CC	METAL, OPEN BOTTOM, DIA=5.0
13	LP	00	203.3	BV, CS/CS	LP EXTENDS THRU CC, RIPRAP
16	LP	00	244.3	BV	
20	LP	00	269.5	HS, SS/	
24	SC	00	316.9	WL	GROUSE
27	LP	00	355.4	HS	
29	LP	01	368.6	WL, TJ/	RUFFED GROUSE
30	RI	11	368.6		T=6.5, ACW=3.5, CEDAR CREEK
32	RI	00	395.1	/SS	
34	RI	01	431.1	HS	
39	LP	00	491.1	BV	
41	LP	00	520.1	HS	
46	RI	00	635.1	HS, BV	
47	LP	00	654.3	HS	
51	RI	01	724	/TJ	

Comment Summary

Restoration Monitoring Sites 2007

MONITORING AREA: **2-MC** SITE ID: **354** **STEER CREEK REACH 2 POST-TX**

UNIT#	TYPE	CHAN	DIST. (m)	COMMENTS	NOTE ESTIMATOR
52	RI	11	724		ACW=1.2, T=8.0
53	LP	00	735	HS	
58	RI	00	781.3		CLEARCUT BOTH BANKS
59	LP	00	816.9	HS	
66	LP	01	913.9	/TJ, HS	
67	CB	11	913.9		ACW=0.80, T=7.5
69	LP	00	953.1	HS	
73	LP	00	1052.5	WL	CUTTHROAT, SCAT
74	LP	00	1067.5	HS	COHO FRY
75	RI	01	1087.5	HS	
77	LP	00	1111.5	DJ	
78	RI	00	1132.5	BV	
79	LP	01	1155.3	TJ/, HS	
80	CR	11	1155.3		DUTCH CREEK, ACW=3.0, T=7
82	RI	00	1247	/SS	
84	RI	00	1283.5	WL	DEER TRAIL
87	LP	01	1341.9	TJ/	
88	RI	11	1341.9		ACW=2.8, T=7.5
91	LP	01	1362.9	HS	
93	RI	00	1414.1		END SIGN .50M HARDWOOD RIGHT



Name: NORTONS
 Date: 5/9/2007
 Scale: 1 inch equals 2000 feet

Location: 10 448260 E 4954419 N
 Caption: STEER CREEK REACH 2 RESTORATION SITE - SILETZ BASIN