

ODFW AQUATIC INVENTORY PROJECT
OREGON PLAN FOR SALMON & WATERSHEDS
STREAM RESTORATION HABITAT REPORT

STREAM: Steer Creek Reach 1 (MC-349)
BASIN: Siletz River
SURVEY TYPE: Post-Tx
DATE: January 22, 2007
SURVEY CREW: Matthew Strickland, Sharon Tippery
REPORT PREPARED BY: Paul Jacobsen
BASIN AREA: 19.9 km²
USGS MAPS: Nortons
ECOREGION: Coast Range Sedimentary

GENERAL DESCRIPTION:

The Steer Creek Reach 1 habitat survey extended 1,906 meters. The channel was constrained by terraces in a broad valley floor. The average valley width index was 5.7 (range: 3-12). Land use for the reach was second growth timber (15-30 cm dbh) and agriculture. The average unit gradient was 0.4 percent. Scour pools (72%) and riffles (24%) dominated stream habitat. Gravel (52%), bedrock (17%) and sand (16%) dominated stream substrate. Wood volume was moderate at 21.2 m³/100m.

COMMENTS:

There were no potential barriers to upstream fish migration in the surveyed length.

The crew noted several habitat structures during the survey.

Beaver activity was noted throughout the survey. Rough-skinned newts were observed during the survey.

REACH 1

T10S-R08W-S09SW

REACH 1

Valley and Channel Summary

Valley Characteristics (Percent Reach Length)

<u>Narrow Valley Floor</u>		<u>Broad Valley Floor</u>	
Steep V-shape	0%	Constraining Terraces	100%
Moderate V-shape	0%	Multiple Terraces	0%
Open V-shape	0%	Wide Floodplain	0%
Valley Width Index	5.7	VWI Range:	3 - 12

Channel Morphology (Percent Reach Length)

<u>Constrained</u>		<u>Unconstrained</u>	
Hillslope	0%	Single Channel	0%
Bedrock	0%	Multiple Channel	0%
Terrace	100%	Braided Channel	0%
Alt. Terrace/Hill	0%		
Landuse	0%		

Channel Characteristics

<u>Type</u>	<u>Length (m)</u>	<u>Area (m2)</u>	<u>Dry Units</u>
Primary Channel	1,906	14,615	0
Secondary Channel	37	208	0
Off-Channel Units	93	192	0

Channel Dimensions (m)

<u>Wetted</u>	<u>Active</u>	<u>Floodprone</u> n = 5	<u>First Terrace</u> n = 5
Width: 6.8	Width: 9.4	18.8 (9.8 - 41)	22.1 (10.8 - 45.7)
Depth: 0.60	Height: 0.5	1.0 (0.8 - 1.3)	1.7 (1.2 - 2)

W:D ratio: 18.7
 Stream Flow Type: MF
 Average Unit Gradient: 0.4%
 Water temperature (°C): 6.0 - 6.0

Entrenchment (ACW:FPW ratio): 1.9
 Habitat Units/100m (total channel length): 4.1
 Habitat Units/100m (primary channel length): 4.4

Riparian, Bank, and Wood Summary

	<u>Primary</u>	<u>Secondary</u>
Land Use:	ST	AG
Riparian Vegetation:	D15	S

Bank Condition and Shade

<u>Bank Status</u>	<u>Percent Reach Length</u>	<u>Shade (% of 180)</u>
Actively Eroding:		Reach avg:
Undercut Banks:		Range: -

Large Wood Debris

	<u>Total</u>	<u>Total / 100m primary channel</u>
All pieces (>=3m x 0.15m):	219	11.5
Volume (m ³):	405	21.2
Key pieces (>=12m x 0.60m):	40	2.1

HABITAT INVENTORY

Report Date: 4/25/2007

Survey Date:

1/22/2007

REACH 1		T10S-R08W-S09SW					REACH 1					
HABITAT DETAIL												
Habitat Type	Number Units	Total Length (m)	Avg Width (m)	Avg Depth (m)	Total Area (m ²)	Large Boulders (#>0.5m)	Substrate Percent Wetted Area					
							S/O	Snd	Grvl	Cbl	Bldr	Bdrk
POOL-BACKWATER	2	25	3.6	0.55	68	0	39	36	19	0	0	6
POOL-LATERAL SCOUR	42	1,362	7.7	0.91	10,820	0	7	19	43	8	1	21
POOL-PLUNGE	1	8	5.5	0.95	46	0	0	21	68	5	0	5
RIFFLE	24	529	5.5	0.26	3,337	0	5	12	65	8	1	9
RIFFLE W/ POCKETS	1	45	6.4	0.45	287	0	0	5	15	10	0	70
STEP/BEDROCK	2	12	4.0	0.25	74	0	0	5	5	3	0	88
STEP/COBBLE	10	50	6.9	0.23	343	0	4	10	68	15	2	1
STEP/LOG	2	6	6.4	0.13	40	0	3	13	68	16	0	0
Total:	84	2,036	6.8	0.60	15,014	0	Avg: 6	16	52	9	1	17

HABITAT SUMMARY									
Habitat Group	Number Units	Total Length (m)	Avg Width (m)	Avg Depth (m)	Wetted Area		Large Boulders		
					(m ²)	Percent	Number	(# / 100m ²)	
Dammed & BW Pools	2	25	3.6	0.55	68	0.45%	0	0.0	
Scour Pools	43	1,370	7.7	0.92	10,865	72.37%	0	0.0	
Glides	0	0			0	0.00%	0	0.0	
Riffles	25	574	5.6	0.27	3,624	24.14%	0	0.0	
Rapids	0	0			0	0.00%	0	0.0	
Cascades	0	0			0	0.00%	0	0.0	
Step/Falls	14	68	6.4	0.21	457	3.05%	0	0.0	
Dry	0	0			0	0.00%	0	0.0	
Culverts	0	0			0	0.00%	0	0.0	

POOL SUMMARY			
	<u>Total</u>	Total of all Channel Lengths	
		<u># / Km</u>	Primary Channel Length <u># / Km</u>
All Pools:	45	22.1	23.6
Pools >=1m deep:	10	4.9	5.2
Complex pools (LWD pieces>=3):	19	9.3	10.0
Pool frequency (channel widths/pool):	4.8		
Residual pool depth (avg):	0.66		

Comment Summary

Restoration Monitoring Sites 2007

MONITORING AREA: **2-MC** SITE ID: **349** STEER CREEK REACH 1 POST-TX

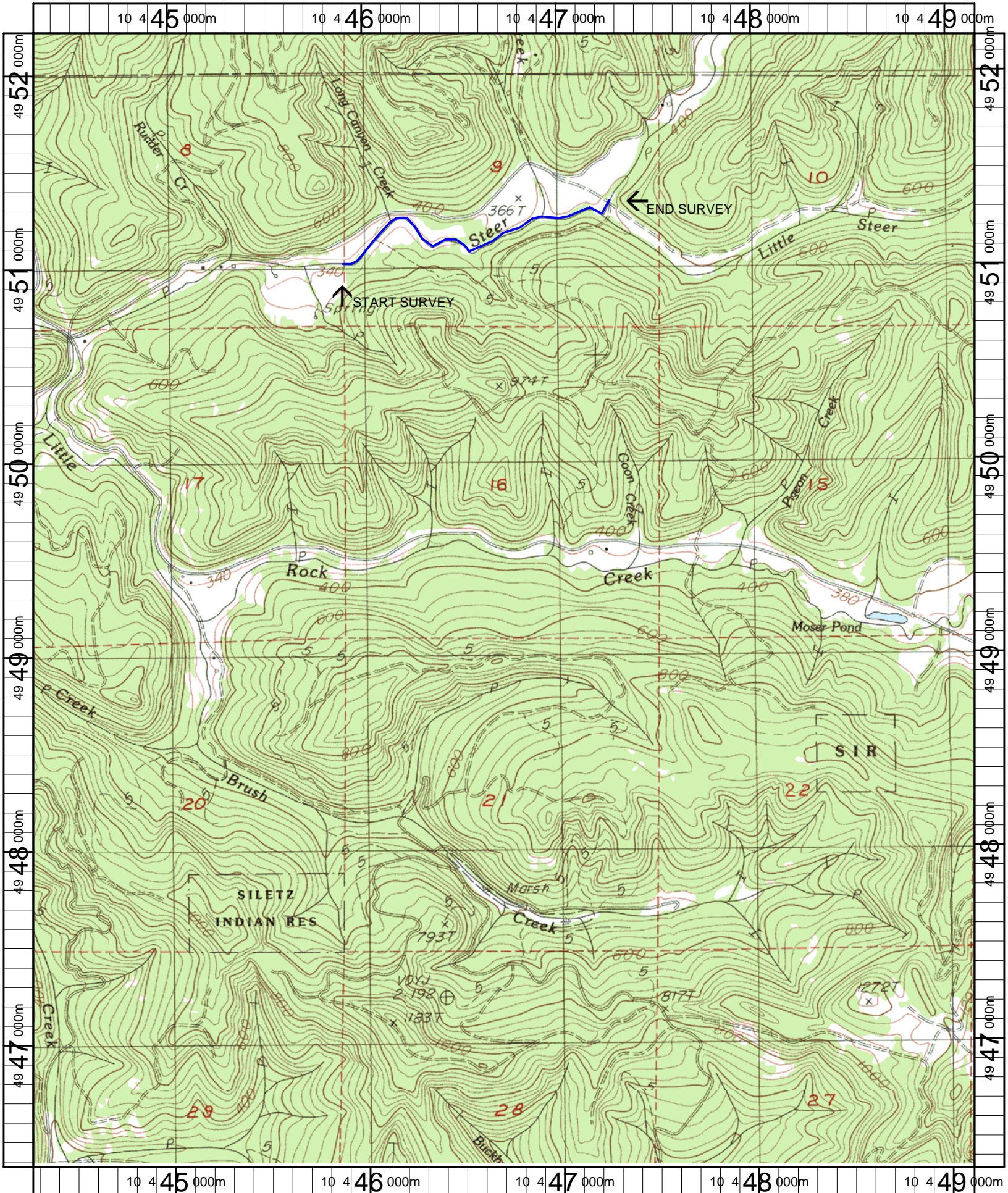
UNIT#	TYPE	CHAN	DIST. (m)	COMMENTS	NOTE ESTIMATOR
5	LP	00	98.8	FC	
8	LP	00	158.1	HS	
10	LP	00	225.5	/SS, SS/	
14	LP	00	278.6	/SS	
19	LP	00	399.7	/SS, HS	
21	LP	00	463.6	BD	
22	SC	01	466.4	TJ/	
23	RI	11	466.4		ACW=1.8, 7.0 DEGREES C
24	LP	01	524.9	TJ/	ROUGH SKIN NEWT PRESENT
26	RI	11	524.9		ACW=2.1, 7.0 DEGREES C
27	LP	00	540.4	HS	
34	LP	00	760.5	HS, /SS	
43	SC	01	1044.7	/TJ	
44	RI	11	1044.7		ACW=1.6, 7.0 DEGREES C
45	LP	01	1063.9	HS	
47	LP	01	1084.4	HS	
49	LP	02	1088.6	DJ	EROSION, SAWDUST/MANURE PILE
56	LP	00	1221.2	HS	
58	LP	00	1255.8	HS	
60	RI	00	1328.9	BV	
63	LP	00	1425.3	HS, BV	

Comment Summary

Restoration Monitoring Sites 2007

MONITORING AREA: **2-MC** SITE ID: **349** STEER CREEK REACH 1 POST-TX

UNIT#	TYPE	CHAN	DIST. (m)	COMMENTS	NOTE ESTIMATOR
65	LP	00	1458.8	HS	
66	RI	01	1505.4	HS, TJ/	
67	RI	11	1505.4		ACW=4.0, 8.0 DEGREES C
69	RI	00	1559	/SS	
70	LP	00	1577.9	/SS	
73	LP	00	1646.4	HS, BV	
76	LP	00	1742.2	HS	
77	RP	00	1787	/SS, HS	
78	LP	00	1798.5	HS	
80	RI	11	1814		ACW=4.0, 7.0 DEGREES C
81	LP	01	1844.1	HS	



Name: NORTONS
 Date: 5/9/2007
 Scale: 1 inch equals 2000 feet

Location: 10 446709 E 4949280 N
 Caption: STEER CREEK REACH 1 RESTORATION SITE - SILETZ BASIN