

ODFW AQUATIC INVENTORY PROJECT
OREGON PLAN FOR SALMON & WATERSHEDS
STREAM RESTORATION HABITAT REPORT

STREAM: Long Prairie Creek (MC-335)
BASIN: Siletz River
SURVEY TYPE: Post-Tx
DATE: January 17, 2007
SURVEY CREW: Andy Lanier, Laurel Moulton
REPORT PREPARED BY: Paul Jacobsen
BASIN AREA: 16.8 km²
USGS MAPS: Eddyville
ECOREGION: Coast Range Sedimentary

GENERAL DESCRIPTION:

The Long Prairie Creek habitat survey extended 507 meters. The channel was constrained by multiple terraces in a broad valley floor. The average valley width index was 8.1 (range: 2.5-20). Land use for the reach was second growth timber (15-30 cm dbh). The average unit gradient was 0.4 percent. Scour pools (84%) and riffles (10%) dominated stream habitat. Gravel (46%) and bedrock (24%) dominated stream substrate. Wood volume was low at 16.8 m³/100m.

COMMENTS:

There were no potential barriers to upstream fish migration in the surveyed length.

The crew noted several habitat structures during the survey.

Beaver activity was noted throughout the survey. 3 adult salmon carcasses and 1 live adult salmon were observed during the survey.

REACH 1

T10S-R09W-S08SW

REACH 1

Valley and Channel Summary

Valley Characteristics (Percent Reach Length)

<u>Narrow Valley Floor</u>		<u>Broad Valley Floor</u>	
Steep V-shape	0%	Constraining Terraces	0%
Moderate V-shape	0%	Multiple Terraces	100%
Open V-shape	0%	Wide Floodplain	0%
Valley Width Index	8.1	VWI Range:	2.5 - 20

Channel Morphology (Percent Reach Length)

<u>Constrained</u>		<u>Unconstrained</u>	
Hillslope	0%	Single Channel	0%
Bedrock	0%	Multiple Channel	0%
Terrace	100%	Braided Channel	0%
Alt. Terrace/Hill	0%		
Landuse	0%		

Channel Characteristics

<u>Type</u>	<u>Length (m)</u>	<u>Area (m2)</u>	<u>Dry Units</u>
Primary Channel	507	3,553	0
Secondary Channel	15	75	0
Off-Channel Units	19	15	0

Channel Dimensions (m)

<u>Wetted</u>	<u>Active</u>	<u>Floodprone</u> n = 5	<u>First Terrace</u> n = 5
Width: 6.0	Width: 8.6	10.8 (9.1 - 14.5)	12.2 (10.4 - 16.5)
Depth: 0.67	Height: 0.5	1.0 (0.9 - 1)	1.4 (1.1 - 1.7)

W:D ratio: 18.0
 Stream Flow Type: MF
 Average Unit Gradient: 0.4%
 Water temperature (°C): 5.0 - 5.0

Entrenchment (ACW:FPW ratio): 1.3
 Habitat Units/100m (total channel length): 5.4
 Habitat Units/100m (primary channel length): 5.7

Riparian, Bank, and Wood Summary

	<u>Primary</u>	<u>Secondary</u>
Land Use:	ST	
Riparian Vegetation:	D30	G

Bank Condition and Shade

<u>Bank Status</u>	<u>Percent Reach Length</u>	<u>Shade (% of 180)</u>
Actively Eroding:		Reach avg:
Undercut Banks:		Range: -

Large Wood Debris

	<u>Total</u>	<u>Total / 100m primary channel</u>
All pieces (>=3m x 0.15m):	57	11.2
Volume (m ³):	85	16.8
Key pieces (>=12m x 0.60m):	10	2.0

OREGON DEPT OF FISH AND WILDLIFE

LONG PRAIRIE CREEK POST-TX (2-MC, 335)

HABITAT INVENTORY

Report Date: 4/25/2007

Survey Date:

1/17/2007

REACH 1		T10S-R09W-S08SW					REACH 1					
HABITAT DETAIL												
Habitat Type	Number Units	Total Length (m)	Avg Width (m)	Avg Depth (m)	Total Area (m ²)	Large Boulders (#>0.5m)	Substrate Percent Wetted Area					
							S/O	Snd	Grvl	Cbl	Bldr	Bdrk
POOL-BACKWATER	1	4	1.5	0.80	6	0	60	40	0	0	0	0
POOL-DAMMED	1	20	5.0	1.50	100	0	5	25	70	0	0	0
POOL-LATERAL SCOUR	16	430	7.0	0.89	3,055	0	7	21	40	6	1	25
POOL-PLUNGE	1	5	4.5	0.95	23	0	0	45	50	0	0	5
RIFFLE	5	66	4.4	0.17	364	0	3	8	69	2	1	17
STEP/BEDROCK	2	9	5.3	0.20	44	0	2	0	7	0	0	90
STEP/COBBLE	1	7	7.0	0.30	46	0	0	0	85	5	0	10
STEP/LOG	2	1	5.8	0.15	6	0	5	29	57	0	0	10
Total:	29	541	6.0	0.67	3,643	0	Avg: 7	19	46	4	1	24

HABITAT SUMMARY									
Habitat Group	Number Units	Total Length (m)	Avg Width (m)	Avg Depth (m)	Wetted Area		Large Boulders		
					(m ²)	Percent	Number	(# / 100m ²)	
Dammed & BW Pools	2	24	3.3	1.15	106	2.91%	0	0.0	
Scour Pools	17	435	6.8	0.90	3,077	84.47%	0	0.0	
Glides	0	0			0	0.00%	0	0.0	
Riffles	5	66	4.4	0.17	364	10.00%	0	0.0	
Rapids	0	0			0	0.00%	0	0.0	
Cascades	0	0			0	0.00%	0	0.0	
Step/Falls	5	16	5.8	0.20	96	2.62%	0	0.0	
Dry	0	0			0	0.00%	0	0.0	
Culverts	0	0			0	0.00%	0	0.0	

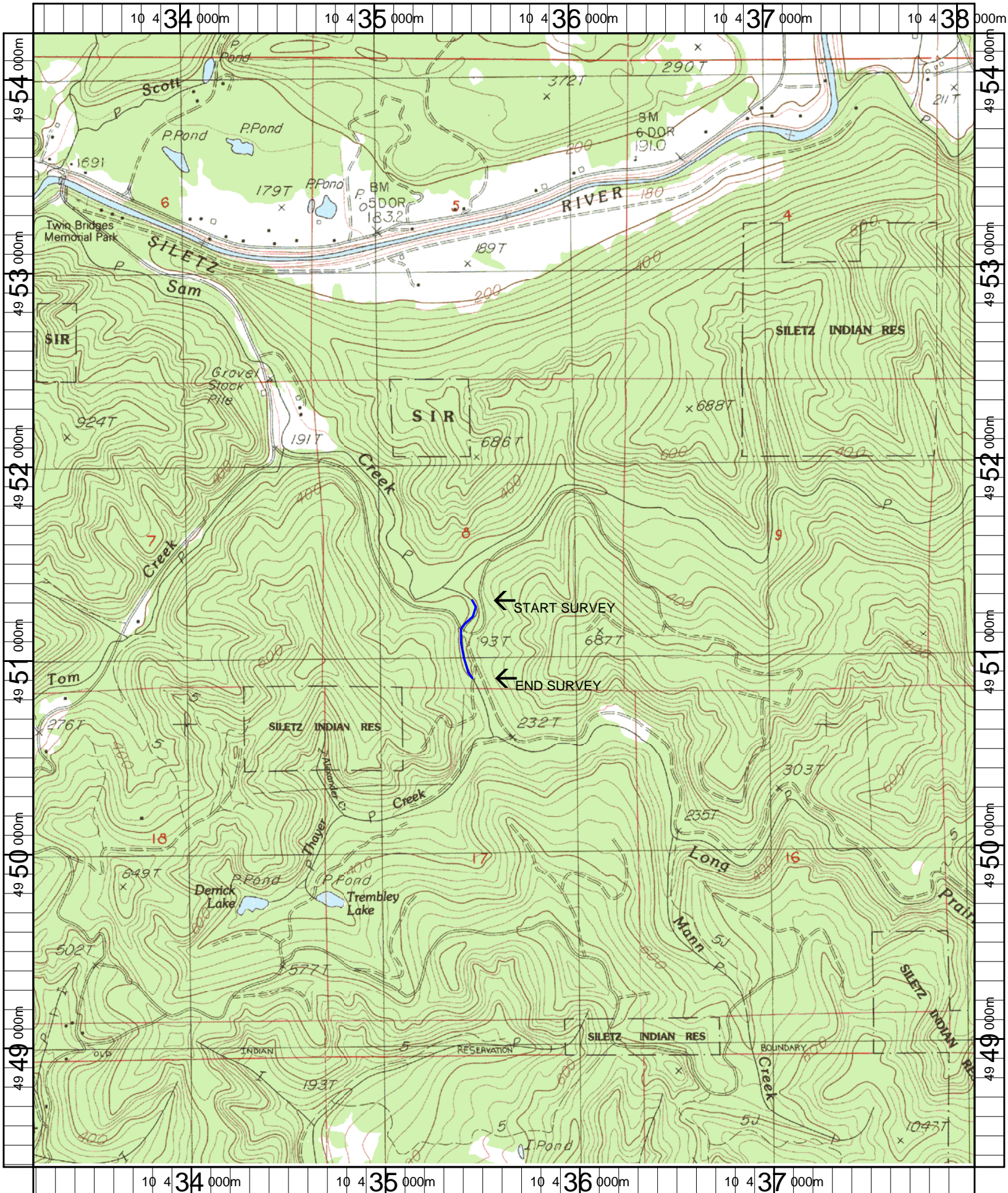
POOL SUMMARY			
	<u>Total</u>	Total of all Channel Lengths	Primary Channel Length
		<u># / Km</u>	<u># / Km</u>
All Pools:	19	35.1	37.5
Pools >=1m deep:	6	11.1	11.8
Complex pools (LWD pieces>=3):	6	11.1	11.8
Pool frequency (channel widths/pool):	3.3		
Residual pool depth (avg):	0.69		

Comment Summary

Restoration Monitoring Sites 2007

MONITORING AREA: **2-MC** SITE ID: **335** LONG PRAIRIE CREEK POST-TX

UNIT#	TYPE	CHAN	DIST. (m)	COMMENTS	NOTE ESTIMATOR
1	LP	00	12	BV	
4	LP	00	48	SS/	
6	LP	00	75.5	HS, BV	
8	LP	00	117.5	BV	
9	RI	01	138	HS,TJ/	
10	RI	11	138		T=7.0, ACW=1.0
11	LP	00	156	HS	
15	LP	01	217	BC, CS/CS	
20	DP	00	242.5		ADULT COHO CARCASS
22	LP	00	275.5	BV, SS/,HS	ADULT SALMON CARCASS
23	LP	00	317	BV	
24	LP	00	355	/SS	LIVE ADULT SALMON
25	LP	00	395	HS, BV	
28	LP	01	507	BB, CS/TJ	DEAD ADULT SALMON
29	RI	11	507		T=5.5,ACW=1.0, FLOW=2



Name: EDDYVILLE
 Date: 5/9/2007
 Scale: 1 inch equals 2000 feet

Location: 10 435638 E 4951290 N
 Caption: LONG PRAIRIE CREEK #335 RESTORATION SITE - SILETZ BASIN