

ODFW AQUATIC INVENTORY PROJECT
OREGON PLAN FOR SALMON & WATERSHEDS
STREAM RESTORATION HABITAT REPORT

STREAM: Long Prairie Creek (MC-335)
BASIN: Siletz River
SURVEY TYPE: Pre-Tx
DATE: February 21, 2006
SURVEY CREW: Scott Venables, Seth Ring
REPORT PREPARED BY: Paul Jacobsen
BASIN AREA: 13.4 km³
USGS MAPS: Eddyville
ECOREGION: Coast Range Sedimentary

GENERAL DESCRIPTION:

The Long Prairie Creek habitat survey extended 536 meters. The channel was constrained by terraces in a broad valley floor. The average valley width index was 9.2 (range: 5.0-15.0). Land use for the reach was young (3-15 cm dbh) and second growth (15-30 cm dbh) trees. The average unit gradient was 0.2 percent. Scour pools (69%) and riffles (19%) dominated stream habitat. Gravel (34%), sand (22%) and bedrock (21%) dominated stream substrate. Wood volume was very low at 2.3 m³/100m.

COMMENTS:

There were no potential barriers to upstream fish migration in the surveyed length.

REACH 1

T10S-R09W-S08SE

REACH 1

Valley and Channel Summary

Valley Characteristics (Percent Reach Length)

<u>Narrow Valley Floor</u>		<u>Broad Valley Floor</u>	
Steep V-shape	0%	Constraining Terraces	0%
Moderate V-shape	0%	Multiple Terraces	100%
Open V-shape	0%	Wide Floodplain	0%
Valley Width Index	9.2	VWI Range:	5 - 15

Channel Morphology (Percent Reach Length)

<u>Constrained</u>		<u>Unconstrained</u>	
Hillslope	0%	Single Channel	0%
Bedrock	0%	Multiple Channel	0%
Terrace	100%	Braided Channel	0%
Alt. Terrace/Hill	0%		
Landuse	0%		

Channel Characteristics

<u>Type</u>	<u>Length (m)</u>	<u>Area (m2)</u>	<u>Dry Units</u>
Primary Channel	536	3,618	0
Secondary Channel	0	0	0
Off-Channel Units	25	18	1

Channel Dimensions (m)

<u>Wetted</u>	<u>Active</u>	<u>Floodprone</u> n = 5	<u>First Terrace</u> n = 5
Width: 6.2	Width: 9.2	22.3 (10.5 - 49.8)	27.5 (13.3 - 51.8)
Depth: 0.58	Height: 0.7	1.3 (1.3 - 1.4)	1.8 (1.6 - 2.1)

W:D ratio: 13.8

Entrenchment (ACW:FPW ratio): 2.3

Stream Flow Type: MF

Habitat Units/100m (total channel length): 3.7

Average Unit Gradient: 0.2%

Habitat Units/100m (primary channel length): 3.9

Water temperature (°C): 5.5 - 5.5

Riparian, Bank, and Wood Summary

	<u>Primary</u>	<u>Secondary</u>
Land Use:	YT	ST
Riparian Vegetation:	D30	S

Bank Condition and Shade

<u>Bank Status</u>	<u>Percent Reach Length</u>	<u>Shade (% of 180)</u>
Actively Eroding:		Reach avg:
Undercut Banks:		Range: -

Large Wood Debris

	<u>Total</u>	<u>Total / 100m primary channel</u>
All pieces (>=3m x 0.15m):	45	8.4
Volume (m ³):	12	2.3
Key pieces (>=12m x 0.60m):	0	0.0

HABITAT INVENTORY

Report Date: 12/6/2006

Survey Date:

2/21/2006

REACH 1		T10S-R09W-S08SE					REACH 1					
HABITAT DETAIL												
Habitat Type	Number Units	Total Length (m)	Avg Width (m)	Avg Depth (m)	Total Area (m ²)	Large Boulders (#>0.5m)	Substrate Percent Wetted Area					
							S/O	Snd	Grvl	Cbl	Bldr	Bdrk
DRY CHANNEL	1	15	0.9	0.00	13	0	0	30	70	0	0	0
POOL-BEAVER DAM	1	64	6.8	1.00	436	0	60	15	15	5	5	0
POOL-LATERAL SCOUR	12	373	6.9	0.80	2,506	0	12	29	23	10	3	24
RIFFLE	7	109	5.8	0.21	681	0	3	11	51	11	2	22
Total:	21	561	6.2	0.58	3,636	0	Avg: 11	22	34	9	3	21

HABITAT SUMMARY									
Habitat Group	Number Units	Total Length (m)	Avg Width (m)	Avg Depth (m)	Wetted Area		Large Boulders		
					(m ²)	Percent	Number	(# / 100m ²)	
Dammed & BW Pools	1	64	6.8	1.00	436	11.99%	0	0.0	
Scour Pools	12	373	6.9	0.80	2,506	68.92%	0	0.0	
Glides	0	0			0	0.00%	0	0.0	
Riffles	7	109	5.8	0.21	681	18.72%	0	0.0	
Rapids	0	0			0	0.00%	0	0.0	
Cascades	0	0			0	0.00%	0	0.0	
Step/Falls	0	0			0	0.00%	0	0.0	
Dry	1	15	0.9	0.00	13	0.37%	0	0.0	
Culverts	0	0			0	0.00%	0	0.0	

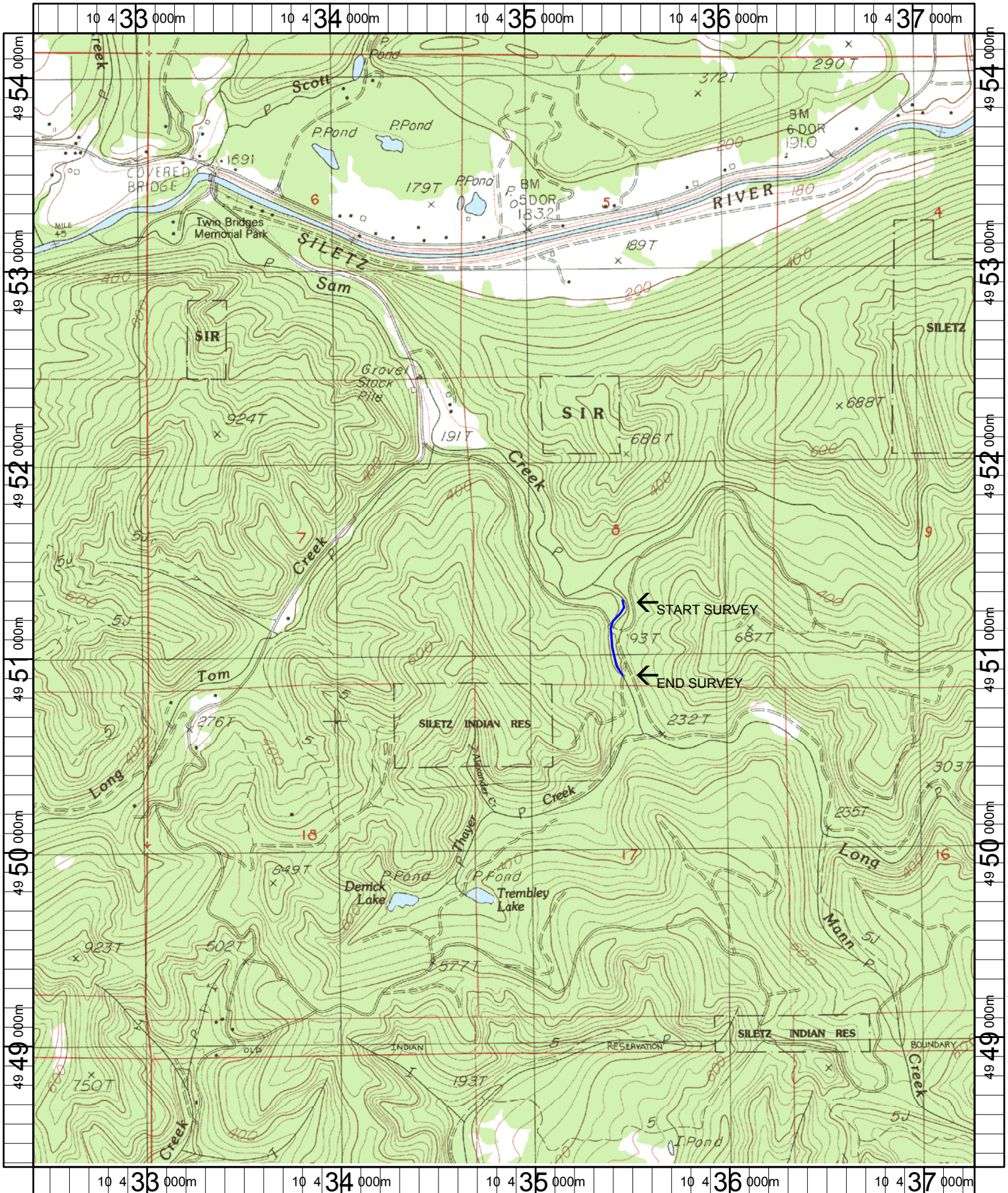
POOL SUMMARY			
	<u>Total</u>	Total of all Channel Lengths	
		<u># / Km</u>	Primary Channel Length <u># / Km</u>
All Pools:	13	23.2	24.2
Pools >=1m deep:	4	7.1	7.5
Complex pools (LWD pieces>=3):	6	10.7	11.2
Pool frequency (channel widths/pool):	4.7		
Residual pool depth (avg):	0.64		

Comment Summary

Restoration Monitoring Sites 2006

MONITORING AREA: **2-MC** SITE ID: **335** **LONG PRAIRIE CREEK PRE-TX**

UNIT#	TYPE	CHAN	DIST. (m)	COMMENTS	NOTE ESTIMATOR	NOTE NUMERATOR
1	LP	00	16.3		CT-MT, D30, S, ST	
2	LP	00	35.7		T = 5.5 C AT 1400	
3	LP	00	56.3		U 2 = ADULT SALMONID	
7	RI	01	140.8	TJ/	CT-MT, D15, S, YT, ST	
8	RI	11	140.8		ACW = 1.1 M, T = 7 C	
9	DC	12	140.8		ACW = .9 M	
11	BP	00	246.7	BV		
12	RI	00	265.3	SS/	US-MT, D30, YT, ST	
15	RI	00	340.6	/SS		
16	LP	00	389.1		US-MT, D30, S, YT, ST	
17	RI	00	397.9		U 17 = 3 STHD REDDS	
21	LP	00	536.1	/SS	CT-MT, D30, YT	



Name: EDDYVILLE
 Date: 1/19/2006
 Scale: 1 inch equals 2000 feet

Location: 10 434866 E 4951280 N
 Caption: LONG PRAIRIE CREEK (#335) RESTORATION SITE - SILETZ BASIN