

**ODFW AQUATIC INVENTORY PROJECT
OREGON PLAN FOR SALMON & WATERSHEDS
STREAM RESTORATION HABITAT REPORT**

STREAM: Wildcat Creek (MC-306)
BASIN: Siuslaw River
SURVEY TYPE: Pre-Tx
DATE: February 22, 2005
SURVEY CREW: Brian Bangs, Sheila Davis
REPORT PREPARED BY: Paul Jacobsen
BASIN AREA: 9.6 km² (above survey start)
USGS MAPS: High Point
ECOREGION: Mid-Coastal Sedimentary

GENERAL DESCRIPTION:

The Wildcat Creek habitat survey extended 2,143 meters. The channel was alternately constrained by hillslopes and terraces in a broad valley floor. The average valley width index was 8.1 (range: 3.5-20.0). Land use for the reach was second growth (15-30 cm dbh) and large (30-50 cm dbh) trees. The average unit gradient was 1.0 percent. Scour pools (57%) and riffles (32%) dominated stream habitat. Sand (48%) and silt/organics (25%) dominated stream substrate. Wood volume was moderate at 21.7 m³/100m.

COMMENTS:

There was one potential barrier to upstream fish migration in the surveyed length. This was a step and culvert in units 82 & 83, 1,038 m into the survey.

The crew noted several debris jams and beaver activity during the survey.

REACH 1

T18S-R06W-S13SE

REACH 1

Valley and Channel Summary

Valley Characteristics (Percent Reach Length)

<u>Narrow Valley Floor</u>		<u>Broad Valley Floor</u>	
Steep V-shape	0%	Constraining Terraces	0%
Moderate V-shape	0%	Multiple Terraces	100%
Open V-shape	0%	Wide Floodplain	0%
Valley Width Index	8.1	VWI Range:	3.5 - 20

Channel Morphology (Percent Reach Length)

<u>Constrained</u>		<u>Unconstrained</u>	
Hillslope	0%	Single Channel	0%
Bedrock	0%	Multiple Channel	0%
Terrace	0%	Braided Channel	0%
Alt. Terrace/Hill	100%		
Landuse	0%		

Channel Characteristics

<u>Type</u>	<u>Length (m)</u>	<u>Area (m2)</u>	<u>Dry Units</u>
Primary Channel	2,143	7,243	0
Secondary Channel	108	142	2
Off-Channel Units	194	212	0

Channel Dimensions (m)

<u>Wetted</u>	<u>Active</u>	<u>Floodprone</u> n = 8	<u>First Terrace</u> n = 8
Width: 2.8	Width: 4.8	9.5 (5.1 - 24.9)	10.1 (6.2 - 24.9)
Depth: 0.36	Height: 0.5	1.1 (0.7 - 1.5)	1.3 (0.95 - 1.65)

W:D ratio: 9.8
 Stream Flow Type: LF
 Average Unit Gradient: 1.0%
 Water temperature (°C): 4.5 - 4.5

Entrenchment (ACW:FPW ratio): 2.1
 Habitat Units/100m (total channel length): 7.4
 Habitat Units/100m (primary channel length): 8.4

Riparian, Bank, and Wood Summary

	<u>Primary</u>	<u>Secondary</u>
Land Use:	ST	LT
Riparian Vegetation:	D30	S

Bank Condition and Shade

<u>Bank Status</u>	<u>Percent Reach Length</u>	<u>Shade (% of 180)</u>
Actively Eroding:		Reach avg:
Undercut Banks:		Range: -

Large Wood Debris

	<u>Total</u>	<u>Total / 100m primary channel</u>
All pieces (>=3m x 0.15m):	567	26.5
Volume (m ³):	466	21.7
Key pieces (>=12m x 0.60m):	13	0.6

OREGON DEPT OF FISH AND WILDLIFE

WILDCAT CREEK PRE-TX (2-MC, 306)

HABITAT INVENTORY

Report Date: 11/29/2005

Survey Date:

2/22/2005

REACH 1		T18S-R06W-S13SE					REACH 1					
HABITAT DETAIL												
Habitat Type	Number Units	Total Length (m)	Avg Width (m)	Avg Depth (m)	Total Area (m ²)	Large Boulders (#>0.5m)	Substrate Percent Wetted Area					
							S/O	Snd	Grvl	Cbl	Bldr	Bdrk
CULVERT CROSSING	1	14	1.0	0.15	14	0	5	25	40	30	0	0
GLIDE	8	152	3.3	0.22	503	0	19	44	18	3	1	14
POOL-BACKWATER	24	83	1.1	0.13	98	0	52	39	7	1	0	2
POOL-DAMMED	2	22	5.0	0.68	129	0	30	45	20	5	0	0
POOL-LATERAL SCOUR	72	1,077	3.8	0.64	4,353	0	25	54	16	3	0	2
PUDDLED UNIT	2	49	0.9	0.08	49	0	48	48	3	3	0	0
RIFFLE	68	1,031	2.3	0.17	2,407	0	15	48	29	4	1	3
RIFFLE W/ POCKETS	1	15	2.8	0.35	43	0	15	55	30	0	0	0
STEP/LOG	1	0	1.1	0.05	0	0	60	15	15	10	0	0
STEP/STRUCTURE	2	1	1.1	0.13	1	0	5	15	15	15	0	50
Total:	181	2,444	2.8	0.36	7,597	0	Avg: 25	48	20	3	0	3

HABITAT SUMMARY									
Habitat Group	Number Units	Total Length (m)	Avg Width (m)	Avg Depth (m)	Wetted Area		Large Boulders		
					(m ²)	Percent	Number	(# / 100m ²)	
Dammed & BW Pools	26	105	1.4	0.17	227	2.99%	0	0.0	
Scour Pools	72	1,077	3.8	0.64	4,353	57.30%	0	0.0	
Glides	8	152	3.3	0.22	503	6.62%	0	0.0	
Riffles	69	1,046	2.3	0.17	2,450	32.25%	0	0.0	
Rapids	0	0			0	0.00%	0	0.0	
Cascades	0	0			0	0.00%	0	0.0	
Step/Falls	3	1	1.1	0.10	1	0.01%	0	0.0	
Dry	2	49	0.9	0.08	49	0.65%	0	0.0	
Culverts	1	14	1.0	0.15	14	0.18%	0	0.0	

POOL SUMMARY			
	<u>Total</u>	Total of all Channel Lengths	
		<u># / Km</u>	Primary Channel Length <u># / Km</u>
All Pools:	98	40.1	45.7
Pools >=1m deep:	2	0.8	0.9
Complex pools (LWD pieces>=3):	47	19.2	21.9
Pool frequency (channel widths/pool):	5.2		
Residual pool depth (avg):	0.43		

Comment Summary

Restoration Monitoring Sites 2005

MONITORING AREA: **2-MC** SITE ID: **306** WILDCAT CREEK PRE-TX

UNIT#	TYPE	CHAN	DIST. (m)	COMMENTS	NOTE ESTIMATOR	NOTE NUMERATOR
1	LP	00	19.8	DJ	CT CT D30 D15 LT ST	
2	RI	00	33.3	DJ		
4	RI	00	61	DJ		
5	LP	00	80.2	BV		
6	LP	00	106.7	SS/		
7	RI	00	119.1	SS/, LA		
8	LP	01	147.9	TJ, SS/TJ	DJ, LA	
9	RI	11	147.9		TRIB RIGHT	
10	RI	11	147.9		TRIB LEFT	
11	GL	00	167	BV		
12	RI	00	176	LA, DJ		
13	GL	01	197.4	/TJ		
15	RI	01	207.2	DJ		
17	LP	00	219	LA		
18	LP	00	229.4	BV, DJ		
19	LP	00	251.6	DJ		
20	RI	00	260.2	EA, DJ	MIDCHNL ERTHFL, LASTWINTER	
22	LP	00	305.2	BV	CA CT D30 D15 TH ST	
23	RI	00	321.8	BV		
30	RI	01	363.6	DJ		
31	LP	01	371.2	BV, DJ		

Comment Summary

Restoration Monitoring Sites 2005

MONITORING AREA: **2-MC** SITE ID: **306** WILDCAT CREEK PRE-TX

UNIT#	TYPE	CHAN	DIST. (m)	COMMENTS	NOTE ESTIMATOR	NOTE NUMERATOR
32	LP	00	384.5	BV, DJ		
33	RI	00	397.3	BV		
34	LP	00	421.8	DJ		
35	RI	00	443.7	DJ,SS, BV		
40	RI	00	517.3	DJ		
41	LP	00	525.4	DJ		
43	LP	00	554.1		JUVIES, OLD BR CROSSING	
46	RI	01	611.5		CA CT D30 SA YT ST	
49	LP	00	654.4	BV	JUVENILES	
51	GL	01	688.1	/TJ		
55	LP	11	688.1	BV	JUVIES, RSNEWTS, EGG MASSES	
58	LP	00	748.3	DJ		
59	LP	00	766.7	BV		
60	RI	01	772.8	DJ		
63	LP	00	816.8	BV /SS		
64	LP	00	830	DJ		
66	LP	00	852.4	/SS		
67	LP	00	862.7	BV		
71	LP	00	934.6		CT MT D30 S YT ST	
79	LP	02	1004.8		JUVENILES	
82	SS	00	1038.1	PA	H=0.3, CUL H=2.3,W=2.3	

Comment Summary

Restoration Monitoring Sites 2005

MONITORING AREA: **2-MC** SITE ID: **306** WILDCAT CREEK PRE-TX

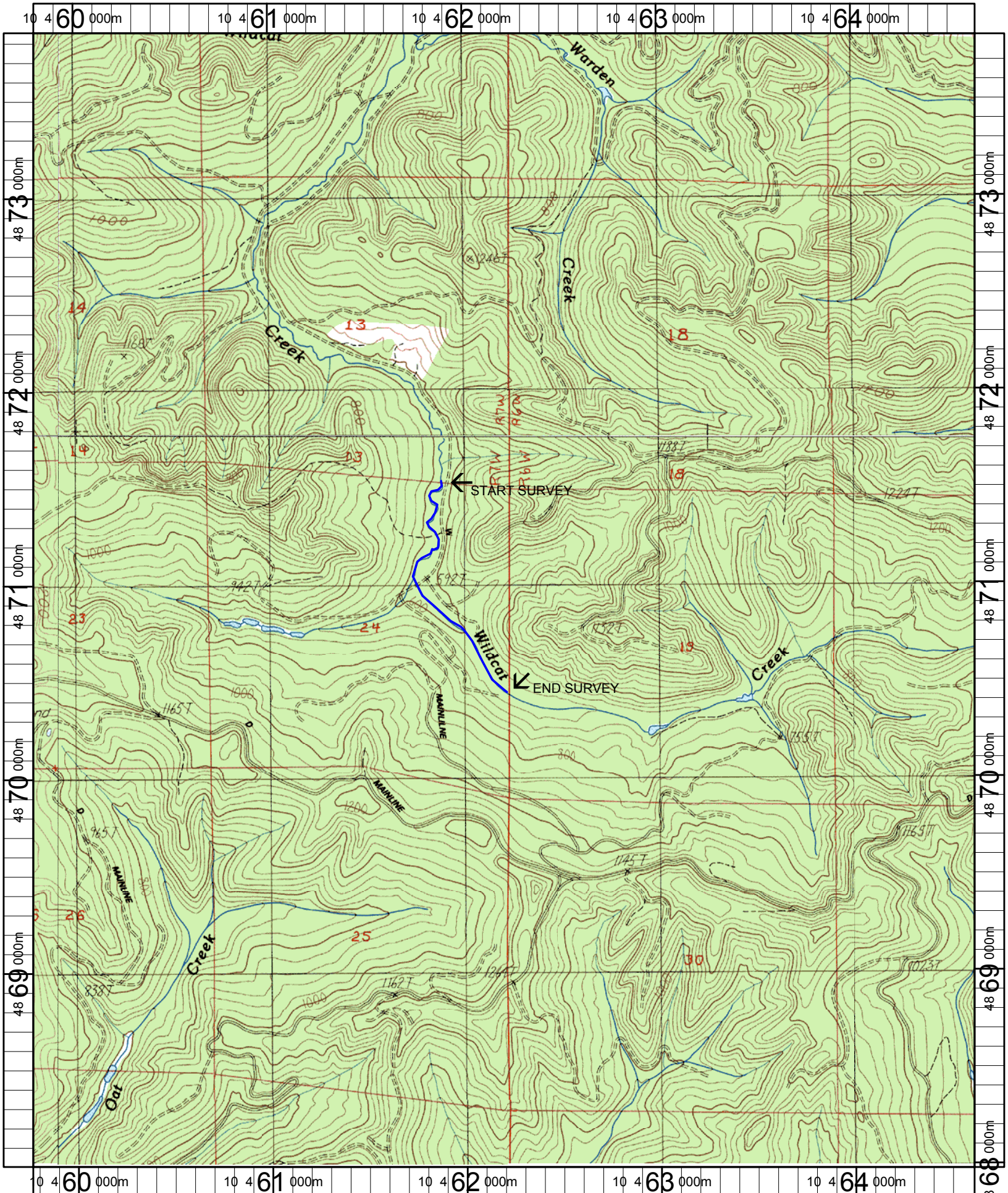
UNIT#	TYPE	CHAN	DIST. (m)	COMMENTS	NOTE ESTIMATOR	NOTE NUMERATOR
83	CC	00	1051.8	CC	GPS AT CE, PHOTO 46, 49	
84	SS	00	1052.15		H=0.3	
85	LP	01	1060.85		ADULT TROUT	
86	RI	11	1060.85		MAP SHOWS DIFF. TRIB ENTRY	
97	DP	00	1202.65	DJ	US MT S M30 LT ST	
106	RI	01	1309.75	DJ	SCULPIN	
121	LP	00	1441.25	DJ		
122	RI	00	1453.65	BV, DJ		
124	LP	00	1484.95	DJ	JUVENILES	
126	LP	00	1507.05		CT MT M30 S LT ST	
127	LP	01	1518.55	DJ		
130	LP	00	1548.75		JUVENILES	
136	LP	00	1612.35	DJ		
145	RI	00	1712.55	DJ		
148	RI	00	1741.25	DJ		
149	LP	00	1767.15	DJ		
150	SL	00	1767.35		H=0.3	
151	DP	00	1782.65	DJ		
152	RI	00	1790.45		CA MT D3 S ST LT	
153	LP	00	1799.35	DJ		
157	GL	00	1888.25	DJ		

Comment Summary

Restoration Monitoring Sites 2005

MONITORING AREA: 2-MC SITE ID: 306 WILDCAT CREEK PRE-TX

<u>UNIT#</u>	<u>TYPE</u>	<u>CHAN</u>	<u>DIST. (m)</u>	<u>COMMENTS</u>	<u>NOTE ESTIMATOR</u>	<u>NOTE NUMERATOR</u>
158	RI	01	1928.25	/TJ		
163	RI	01	1969.05	BV, DJ		
165	BW	10	1969.05	BV		
173	RI	01	2102.45		JUVENILE	
175	RI	01	2125.05	/TJ		
179	RI	00	2142.55	DJ		
181	BW	10	2142.55		CA MT M50 S MT LT	



Name: HIGH POINT
 Date: 1/21/2005
 Scale: 1 inch equals 2000 feet

Location: 10 462203 E 4870916 N
 Caption: WILDCAT CREEK RESTORATION SITE - SIUSLAW BASIN