

REACH 1

T23S-R10W-11SE

REACH 1

Valley and Channel Summary

Valley Characteristics (Percent Reach Length)

<u>Narrow Valley Floor</u>		<u>Broad Valley Floor</u>	
Steep V-shape	0	Constraining Terraces	100
Moderate V-shape	0	Multiple Terraces	0
Open V-shape	0	Wide Floodplain	0

Valley Width Index avg: 3.1 range: 2.2-4.0

Channel Morphology (Percent Reach Length)

<u>Constrained</u>		<u>Unconstrained</u>	
Hillslope	0	Single Channel	0
Bedrock	0	Multiple Channel	0
Terrace	0	Braided Channel	0
Alt. Terrace/Hill	100		
Landuse	0		

Channel Characteristics

<u>Type</u>	<u>Length(m)</u>	<u>Area (m2)</u>	<u>Dry Units</u>
Primary	549	5,104	0
Secondary	56	244	0

Channel Dimensions (m)

<u>Wetted</u>		<u>Active</u>		<u>Floodprone</u>	<u>First Terrace</u>
Width	8.4	Width	13.7	14.8	15.5
Depth	0.57	Height	0.8	1.6	2.2
		W:D ratio	16.8	Entrenchment	1.1

Stream Flow Type: MF Water Temp: 8.0-8.0°C  
 Avg. Unit Gradient: 0.9% Habitat Units/100m: 4.6

Riparian, Bank, and Wood Summary

	<u>Primary</u>	<u>Secondary</u>
Land Use:	ST	LT
Riparian Vegetation:	D15	S

Bank Condition and Shade

<u>Bank Status</u>	<u>Percent Reach Length</u>	<u>Shade (% of 180)</u>
Actively Eroding	0%	Reach avg: 0%
Undercut Banks	0%	Range: 0- 0

Large Woody Debris

	<u>Total</u>	<u>Total/100m</u>
All pieces ( $\geq 3m \times 0.15m$ )	89	16.2
Volume (m <sup>3</sup> )	125	22.7
Key pieces ( $\geq 10m \times 0.6m$ )	3	0.5

REACH 1 T23S-R10W-11SE REACH 1

HABITAT DETAIL

Habitat Type	Number Units	Total Length (m)	Avg Width (m)	Avg Depth (m)	Total Area (m <sup>2</sup> )	Large Boulders (>0.5m)	Substrate Percent Wetted Area					
							S/O	Snd	Grvl	Cbbl	Bldr	Bdrk
CASCADE/BEDROCK	2	50	9.6	0.43	491	0	0	23	3	0	20	55
CASCADE/BOULDERS	2	27	4.4	0.28	69	0	20	0	40	10	25	5
GLIDE	2	96	9.1	0.55	909	0	2	37	17	3	7	34
POOL-BACKWATER	4	36	4.8	0.53	226	0	35	50	15	0	0	0
POOL-DAMMED	1	18	18.0	1.04	324	0	10	70	10	0	5	5
POOL-LATERAL SCOUR	2	48	7.5	0.90	353	0	0	50	25	0	10	15
POOL-STRAIGHT SCOUR	3	46	11.1	0.90	546	0	5	40	37	0	2	17
POOL-TRENCH	1	34	5.8	0.79	199	0	0	5	25	0	0	70
RIFFLE	9	223	9.1	0.44	2,028	0	3	22	62	2	2	9
RIFFLE W/ POCKETS	1	26	7.2	0.63	187	0	0	45	5	0	10	40
STEP/STRUCTURE	1	2	8.2	0.40	16	0	0	20	0	0	0	80
<b>Total:</b>	<b>28</b>	<b>605</b>	<b>8.4</b>	<b>0.57</b>	<b>5,348</b>	<b>0</b>	<b>Avg: 8</b>	<b>31</b>	<b>33</b>	<b>2</b>	<b>6</b>	<b>19</b>

HABITAT SUMMARY

Habitat Group	No. Units	Total Length (m)	Avg Width (m)	Avg Depth (m)	Wetted Area (m <sup>2</sup> )	Percent	Large Boulders Number	#/100m <sup>2</sup>
Dammed & BW Pools	5	54	7.5	0.63	550	10.28	0	0.0
Scour Pools	6	128	9.0	0.88	1,098	20.53	0	0.0
Glides	2	96	9.1	0.55	909	17.00	0	0.0
Riffles	10	249	8.9	0.46	2,214	41.40	0	0.0
Rapids	0	0	-	-	0	0.00	0	0.0
Cascades	4	76	7.0	0.35	561	10.48	0	0.0
Step/Falls	1	2	8.2	0.40	16	0.31	0	0.0
Dry	0	0	-	-	0	0.00	0	0.0

POOL SUMMARY

All Pools	<u>Total</u> 11	<u>#/Km</u> 18.2
Pools ≥1m deep:	2	3.3
Complex pools (LWD pieces ≥3):	2	3.3
Pool Frequency (channel widths/pool):	4.0	
Residual pool depth (avg)	0.57m	

STREAM SUMMARY

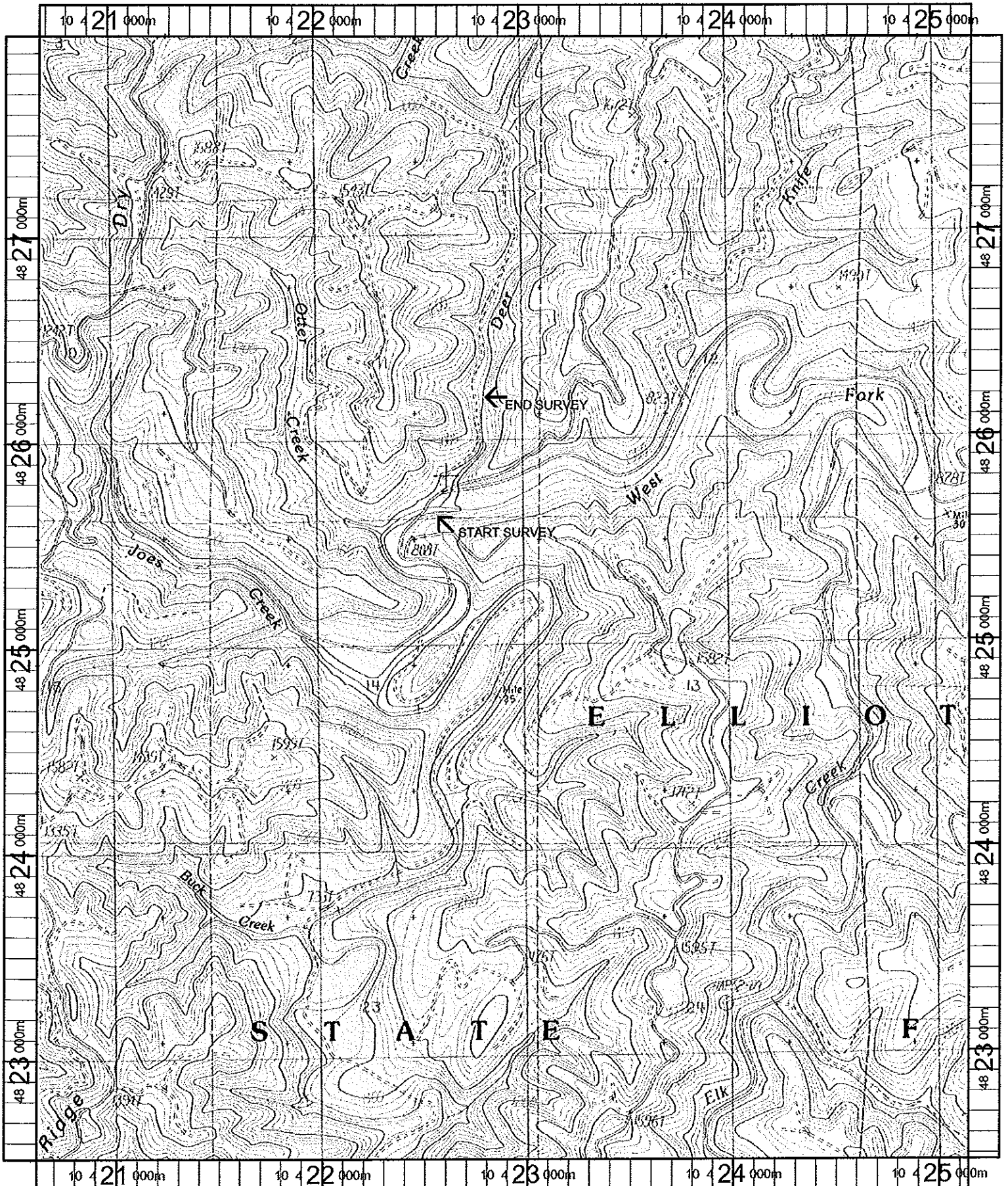
DEER CREEK (PRE-TX)

Number Units	Total Length (m)	Avg Width (m)	Avg Depth (m)	Total Area (m <sup>2</sup> )	Substrate Percent Wetted Area						Total Large Boulder
					S/O	Sand	Grvl	Cbbl	Bldr	Bdrk	
28	605	8.4	0.57	5,348	8	31	33	2	6	19	0

Wetted Area

Habitat Group	(m <sup>2</sup> )	Percent
Scour Pool	1,098	20.5
Backwater Pools	550	10.3
Glide	909	17.0
Riffle	2,214	41.4
Rapid	0	0.0
Cascade	561	10.5
Step	16	0.3
Dry	0	0.0

---



Name: ELK PEAK  
 Date: 10/13/100  
 Scale: 1 Inch equals 2000 feet

Location: 10 422805 E 4825211 N  
 Caption: DEER CREEK RESTORATION SITE  
*Millicoma basin*