

**ODFW AQUATIC INVENTORY PROJECT**  
**OREGON PLAN FOR SALMON & WATERSHEDS**  
**STREAM RESTORATION HABITAT REPORT**

STREAM: Haight Creek (MC-224)  
BASIN: Siuslaw River  
SURVEY TYPE: Post-Tx  
DATE: March 27, 2006  
SURVEY CREW: Brian Cannon, Jon Nott, Brian Bangs  
REPORT PREPARED BY: Paul Jacobsen  
BASIN AREA: 8.5 km<sup>3</sup>  
USGS MAPS: Beaver Creek  
ECOREGION: Coast Range Sedimentary

**GENERAL DESCRIPTION:**

The Haight Creek habitat survey extended 2,249 meters. The channel was alternately constrained by hillslopes and terraces in a broad valley floor. The average valley width index was 6.5 (range: 2.0-10.0). Land use for the reach was second growth (15-30 cm dbh) and large (30-50 cm dbh) trees. The average unit gradient was 0.9 percent. Scour pools (49%) and riffles (40%) dominated stream habitat. Gravel (31%) and bedrock (28%) dominated stream substrate. Wood volume was moderate at 23.0 m<sup>3</sup>/100m.

**COMMENTS:**

There were no potential barriers to upstream fish migration in the surveyed length.

The crew noted several habitat structures during the survey.

REACH 1

T19S-R07W-S35SE

REACH 1

**Valley and Channel Summary**

Valley Characteristics (Percent Reach Length)

<u>Narrow Valley Floor</u>		<u>Broad Valley Floor</u>	
Steep V-shape	0%	Constraining Terraces	100%
Moderate V-shape	0%	Multiple Terraces	0%
Open V-shape	0%	Wide Floodplain	0%
Valley Width Index	6.5	VWI Range:	2 - 10

Channel Morphology (Percent Reach Length)

<u>Constrained</u>		<u>Unconstrained</u>	
Hillslope	0%	Single Channel	0%
Bedrock	0%	Multiple Channel	0%
Terrace	0%	Braided Channel	0%
Alt. Terrace/Hill	100%		
Landuse	0%		

Channel Characteristics

<u>Type</u>	<u>Length (m)</u>	<u>Area (m2)</u>	<u>Dry Units</u>
Primary Channel	2,249	9,718	0
Secondary Channel	78	153	1
Off-Channel Units	89	280	0

Channel Dimensions (m)

<u>Wetted</u>	<u>Active</u>	<u>Floodprone</u> n = 9	<u>First Terrace</u> n = 8
Width: 4.0	Width: 6.8	13.9 ( 8.4 - 35 )	13.3 ( 9 - 24 )
Depth: 0.41	Height: 0.6	1.1 ( 1 - 1.3 )	1.4 ( 1.2 - 1.5 )

W:D ratio: 12.1

Entrenchment (ACW:FPW ratio): 2.0

Stream Flow Type: MF

Habitat Units/100m (total channel length): 5.6

Average Unit Gradient: 0.9%

Habitat Units/100m (primary channel length): 6.0

Water temperature (°C): 9.0 - 9.0

**Riparian, Bank, and Wood Summary**

	<u>Primary</u>	<u>Secondary</u>
Land Use:	ST	LT
Riparian Vegetation:	D30	S

Bank Condition and Shade

<u>Bank Status</u>	<u>Percent Reach Length</u>	<u>Shade (% of 180)</u>
Actively Eroding:		Reach avg: 0%
Undercut Banks:		Range: 0 - 0

Large Wood Debris

	<u>Total</u>	<u>Total / 100m primary channel</u>
All pieces (>=3m x 0.15m):	341	15.2
Volume (m <sup>3</sup> ):	518	23.0
Key pieces (>=12m x 0.60m):	38	1.7

OREGON DEPT OF FISH AND WILDLIFE

HAIGHT CREEK POST-TX (2-MC, 224)

HABITAT INVENTORY

Report Date: 12/6/2006

Survey Date:

3/27/2005

REACH 1		T19S-R07W-S35SE					REACH 1					
HABITAT DETAIL												
Habitat Type	Number Units	Total Length (m)	Avg Width (m)	Avg Depth (m)	Total Area (m <sup>2</sup> )	Large Boulders (#>0.5m)	Substrate Percent Wetted Area					
							S/O	Snd	Grvl	Cbl	Bldr	Bdrk
CASCADE/BOULDERS	6	38	0.8	0.06	33	0	13	25	38	20	3	0
CULVERT CROSSING	1	14	2.9	0.40	40	0	10	30	50	0	0	10
GLIDE	2	39	4.5	0.25	173	0	3	17	30	10	0	40
POOL-BACKWATER	1	2	1.3	0.15	3	0	30	35	30	5	0	0
POOL-DAMMED	1	13	4.2	0.80	55	0	5	20	15	0	0	60
POOL-ISOLATED	2	39	4.0	0.45	221	0	60	40	0	0	0	0
POOL-LATERAL SCOUR	58	1,073	4.4	0.66	4,842	0	5	21	25	7	0	42
POOL-PLUNGE	3	32	5.0	0.68	157	0	4	20	15	10	1	50
PUDDLED UNIT	1	13	1.2	0.25	16	0	10	30	50	10	0	0
RAPID/BEDROCK	1	10	2.3	0.02	23	0	0	5	5	0	0	90
RAPID/BOULDERS	7	101	3.8	0.21	378	0	3	13	31	25	3	24
RIFFLE	38	964	3.9	0.22	3,880	0	4	15	41	19	1	19
RIFFLE W/ POCKETS	2	45	4.9	0.23	202	0	5	23	43	3	0	28
STEP/COBBLE	7	30	4.0	0.17	116	0	4	14	45	35	2	0
STEP/LOG	6	3	4.5	0.18	11	0	25	55	20	0	0	0
<b>Total:</b>	<b>136</b>	<b>2,415</b>	<b>4.0</b>	<b>0.41</b>	<b>10,151</b>	<b>0</b>	<b>Avg: 7</b>	<b>21</b>	<b>31</b>	<b>13</b>	<b>1</b>	<b>28</b>

HABITAT SUMMARY									
Habitat Group	Number Units	Total Length (m)	Avg Width (m)	Avg Depth (m)	Wetted Area		Large Boulders		
					(m <sup>2</sup> )	Percent	Number	(# / 100m <sup>2</sup> )	
Dammed & BW Pools	4	54	3.4	0.46	279	2.74%	0	0.0	
Scour Pools	61	1,106	4.4	0.66	5,000	49.25%	0	0.0	
Glides	2	39	4.5	0.25	173	1.70%	0	0.0	
Riffles	40	1,009	3.9	0.22	4,082	40.22%	0	0.0	
Rapids	8	111	3.6	0.18	401	3.95%	0	0.0	
Cascades	6	38	0.8	0.06	33	0.33%	0	0.0	
Step/Falls	13	33	4.2	0.18	127	1.26%	0	0.0	
Dry	1	13	1.2	0.25	16	0.15%	0	0.0	
Culverts	1	14	2.9	0.40	40	0.39%	0	0.0	

POOL SUMMARY			
	Total	Total of all Channel Lengths # / Km	Primary Channel Length # / Km
All Pools:	65	26.9	28.9
Pools >=1m deep:	5	2.1	2.2
Complex pools (LWD pieces>=3):	28	11.6	12.5
Pool frequency (channel widths/pool):	5.5		
Residual pool depth (avg):	0.47		

# Comment Summary

## Restoration Monitoring Sites 2006

MONITORING AREA: **2-MC**      SITE ID: **224**      HAIGHT CREEK POST-TX

UNIT#	TYPE	CHAN	DIST. (m)	COMMENTS	NOTE ESTIMATOR	NOTE NUMERATOR
1	LP	00	17	HS	CT-MT, D30, S, ST, LT	
2	CC	00	30.7	CC	CULV WIDTH IS 3 M	
4	LP	01	74.8	DJ, HS		
9	RB	01	144.2	HS	SITE 3	
10	LP	01	165.2	CE/		
11	LP	02	165.2	BV		
14	LP	00	198.2		COHO FRY	
16	LP	00	237	HS	SITE 4	
18	LP	00	279.5		T = 9 C	
20	LP	00	326.5		CT-CT, D30, S, ST, LT	
21	RI	01	344.1	/TJ		
22	CB	11	344.1		ACW IS 1.3 M, T IS 7.5 C	
26	LP	00	409.7	HS	SITE 5	
27	RB	00	419.9		OLD BD AT TOP OF UNIT	
28	LP	00	453.9		FRY	
32	LP	00	542.9	/SS		
33	RI	00	578.9	HS	SITE 6	
34	LP	00	599.3	HS	SITE 7, CT-CT, D30, D3, ST	
35	LP	00	614.3		OR PLAN SURVEY START	
38	RI	00	710.6	/LI		
40	LP	00	751.1	SS/ LI/ HS	1 LOG	

# Comment Summary

## Restoration Monitoring Sites 2006

MONITORING AREA: **2-MC**      SITE ID: **224**      HAIGHT CREEK POST-TX

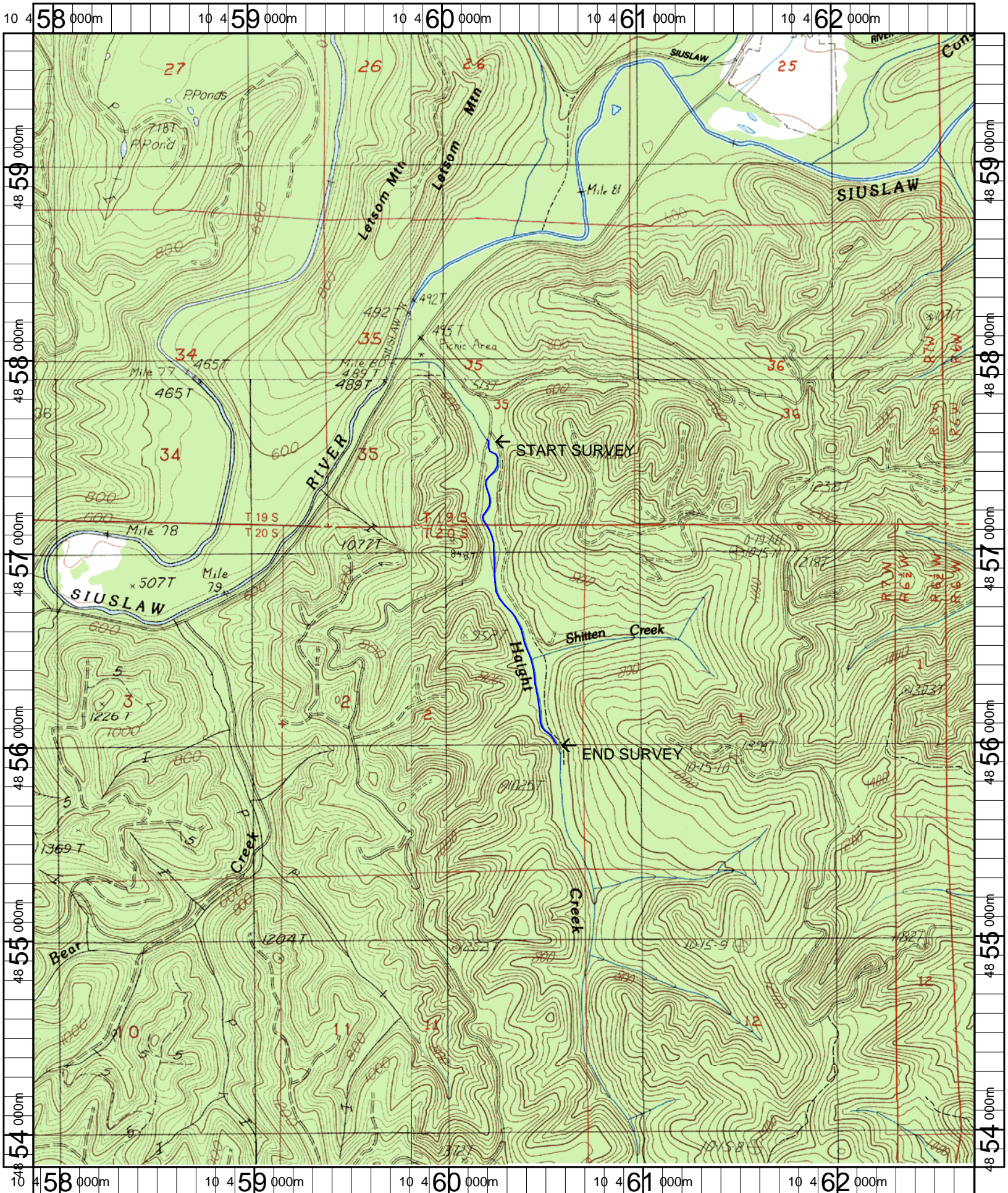
UNIT#	TYPE	CHAN	DIST. (m)	COMMENTS	NOTE ESTIMATOR	NOTE NUMERATOR
42	RI	00	785.9	HS		SITE 8 - 3 LOGS
46	SL	00	851.7			H = 0.3 M
53	LP	02	942			COHO FRY
56	LP	01	1008	HS		SITE 9 - 6 LOGS
57	RI	01	1032	HS		SITE 10 - 4 LOGS
58	LP	02	1032			COHO FRY
60	LP	01	1049	/TJ		
61	CB	11	1049			ACW IS 2 M, T IS 9 C AT 0900
62	LP	00	1062			US-MT, D30, D3, ST
68	LP	01	1156.4	TJ/		
69	CB	11	1156.4			ACW IS 1.2 M
73	LP	00	1269.6			CT-CT, D3, S, ST, LT
76	LP	00	1327.1			COHO FRY
77	RI	00	1379.1	SS/		
86	LP	01	1508.2	HS, TJ		SITE 11 - 4 LOGS
89	LP	00	1528.2			CA-CT, D30, S, ST
92	SL	00	1559.8			H IS .4 M
93	LP	01	1596	/SS, HS		SITE 12
95	LP	00	1609.2	HS		
98	RI	00	1658	HS		SITE 13 - 4 LOGS THRU U 100
99	SL	00	1658.3			H IS .3 M

# Comment Summary

## Restoration Monitoring Sites 2006

MONITORING AREA: **2-MC**      SITE ID: **224**      HAIGHT CREEK POST-TX

UNIT#	TYPE	CHAN	DIST. (m)	COMMENTS	NOTE ESTIMATOR	NOTE NUMERATOR
100	RP	01	1672.3	TJ/		
101	RR	11	1672.3		SHITTEN CR	
102	SL	00	1672.7		H IS .7 M	
105	LP	00	1705.7	HS	1 LOG	
106	LP	00	1719.8	HS	1 LOG	
108	LP	00	1792		CA-CT, D30, S, ST	
109	RI	00	1808.1	HS	SITE 13 - 2 LOGS	
113	LP	00	1884.6		COHO AND CHINOOK FRY	
114	LP	01	1899.1	HS, /TJ		
115	CB	11	1899.1	HS	T IS 9 C AT 1400, ACW IS 2.1 M	
122	SL	00	1975.2		H IS .45 M	
127	LP	00	2045.3		CA-CT, D30, S, ST	
133	SL	00	2146.8		H IS .2 M	
134	RI	00	2196.8	SS/		
135	RI	01	2248.8	TJ/	CA-CT, D30, S, ST	
136	CB	11	2248.8		ACW IS .8 M	



Name: BEAVER CREEK (OR)  
 Date: 2/13/2007  
 Scale: 1 inch equals 2000 feet

Location: 10 0460301 E 4856749 N  
 Caption: HAIGHT CREEK RESTORATION SITE - SIUSLAW BASIN