

**ODFW AQUATIC INVENTORY PROJECT**  
**OREGON PLAN FOR SALMON & WATERSHEDS**  
**STREAM RESTORATION HABITAT REPORT**

STREAM: Haight Creek (MC-224)  
BASIN: Siuslaw River  
SURVEY TYPE: Pre-Tx  
DATE: March 15, 2005  
SURVEY CREW: Brian Bangs, Sheila Davis  
REPORT PREPARED BY: Paul Jacobsen  
BASIN AREA: 8.5 km<sup>2</sup>  
USGS MAPS: Beaver Creek  
ECOREGION: Coast Range Sedimentary

**GENERAL DESCRIPTION:**

The Haight Creek habitat survey extended 2,341 meters. The channel was constrained by terraces in a broad valley floor. The average valley width index was 8.1 (range: 1.2-15.0). Land use for the reach was large (30-50 cm dbh) and second growth (15-30 cm dbh) trees. The average unit gradient was 1.2 percent. Scour pools (55%) and riffles (26%) dominated stream habitat. Gravel (30%), sand (24%) and bedrock (20%) dominated stream substrate. Wood volume was low at 13.5 m<sup>3</sup>/100m.

**COMMENTS:**

There were no potential barriers to upstream fish migration in the surveyed length.

REACH 1

T19S-R07W-S35SW

REACH 1

**Valley and Channel Summary**

Valley Characteristics (Percent Reach Length)

<u>Narrow Valley Floor</u>		<u>Broad Valley Floor</u>	
Steep V-shape	0%	Constraining Terraces	0%
Moderate V-shape	0%	Multiple Terraces	100%
Open V-shape	0%	Wide Floodplain	0%
Valley Width Index	8.1	VWI Range:	1.2 - 15

Channel Morphology (Percent Reach Length)

<u>Constrained</u>		<u>Unconstrained</u>	
Hillslope	0%	Single Channel	0%
Bedrock	0%	Multiple Channel	0%
Terrace	100%	Braided Channel	0%
Alt. Terrace/Hill	0%		
Landuse	0%		

Channel Characteristics

<u>Type</u>	<u>Length (m)</u>	<u>Area (m2)</u>	<u>Dry Units</u>
Primary Channel	2,341	7,848	0
Secondary Channel	146	374	5
Off-Channel Units	185	466	0

Channel Dimensions (m)

<u>Wetted</u>	<u>Active</u>	<u>Floodprone</u> n = 11	<u>First Terrace</u> n = 10
Width: 2.8	Width: 5.5	7.7 ( 5.6 - 9.2 )	9.3 ( 7.4 - 12 )
Depth: 0.27	Height: 0.3	0.7 ( 0.6 - 0.8 )	1.1 ( 0.75 - 1.5 )

W:D ratio: 16.8  
 Stream Flow Type: LF  
 Average Unit Gradient: 1.2%  
 Water temperature (°C): 6.0 - 6.0

Entrenchment (ACW:FPW ratio): 1.5  
 Habitat Units/100m (total channel length): 8.3  
 Habitat Units/100m (primary channel length): 9.5

**Riparian, Bank, and Wood Summary**

	<u>Primary</u>	<u>Secondary</u>
Land Use:	LT	ST
Riparian Vegetation:	D15	S

Bank Condition and Shade

<u>Bank Status</u>	<u>Percent Reach Length</u>	<u>Shade (% of 180)</u>
Actively Eroding:		Reach avg:
Undercut Banks:		Range: -

Large Wood Debris

	<u>Total</u>	<u>Total / 100m primary channel</u>
All pieces (>=3m x 0.15m):	404	17.3
Volume (m <sup>3</sup> ):	316	13.5
Key pieces (>=12m x 0.60m):	5	0.2

OREGON DEPT OF FISH AND WILDLIFE

HAIGHT CREEK PRE-TX (2-MC, 224)

HABITAT INVENTORY

Report Date: 11/29/2005

Survey Date:

3/15/2005

REACH 1		T19S-R07W-S35SW					REACH 1					
HABITAT DETAIL												
Habitat Type	Number Units	Total Length (m)	Avg Width (m)	Avg Depth (m)	Total Area (m <sup>2</sup> )	Large Boulders (#>0.5m)	Substrate Percent Wetted Area					
							S/O	Snd	Grvl	Cbl	Bldr	Bdrk
DRY CHANNEL	3	54	2.9	0.00	156	0	53	43	4	0	0	0
GLIDE	11	168	2.9	0.16	523	0	6	16	14	7	3	53
POOL-ALCOVE	1	56	4.8	0.05	269	0	60	30	10	0	0	0
POOL-BACKWATER	22	74	1.4	0.13	108	0	19	41	18	7	2	12
POOL-DAMMED	1	43	4.8	0.60	204	0	39	49	1	1	5	5
POOL-ISOLATED	3	11	2.1	0.13	23	0	31	19	8	4	0	38
POOL-LATERAL SCOUR	89	1,237	3.6	0.50	4,782	0	12	33	21	7	4	23
PUDDLED UNIT	2	44	1.8	0.13	78	0	10	13	43	13	10	13
RAPID/BEDROCK	2	33	2.7	0.08	86	0	1	7	13	5	2	71
RAPID/BOULDERS	8	98	2.1	0.11	221	0	1	9	49	19	9	13
RIFFLE	77	843	2.5	0.09	2,202	0	4	10	47	18	6	14
RIFFLE W/ POCKETS	1	10	2.5	0.20	24	0	10	25	40	15	10	0
STEP/COBBLE	1	3	2.8	0.05	9	0	0	5	20	50	25	0
STEP/LOG	2	1	0.7	0.05	1	0	10	48	43	0	0	0
<b>Total:</b>	<b>223</b>	<b>2,672</b>	<b>2.8</b>	<b>0.27</b>	<b>8,688</b>	<b>0</b>	<b>Avg: 10</b>	<b>24</b>	<b>30</b>	<b>11</b>	<b>5</b>	<b>20</b>

HABITAT SUMMARY									
Habitat Group	Number Units	Total Length (m)	Avg Width (m)	Avg Depth (m)	Wetted Area		Large Boulders		
					(m <sup>2</sup> )	Percent	Number	(# / 100m <sup>2</sup> )	
Dammed & BW Pools	27	183	1.7	0.15	604	6.96%	0	0.0	
Scour Pools	89	1,237	3.6	0.50	4,782	55.05%	0	0.0	
Glides	11	168	2.9	0.16	523	6.02%	0	0.0	
Riffles	78	852	2.5	0.10	2,226	25.63%	0	0.0	
Rapids	10	130	2.2	0.10	307	3.53%	0	0.0	
Cascades	0	0			0	0.00%	0	0.0	
Step/Falls	3	5	1.4	0.05	10	0.11%	0	0.0	
Dry	5	98	2.5	0.05	235	2.70%	0	0.0	
Culverts	0	0			0	0.00%	0	0.0	

POOL SUMMARY			
	Total	Total of all Channel Lengths # / Km	Primary Channel Length # / Km
All Pools:	116	43.4	49.5
Pools >=1m deep:	2	0.7	0.9
Complex pools (LWD pieces>=3):	35	13.1	14.9
Pool frequency (channel widths/pool):	4.2		
Residual pool depth (avg):	0.41		

# Comment Summary

## Restoration Monitoring Sites 2005

MONITORING AREA: **2-MC**      SITE ID: **224**      HAIGHT CREEK PRE-TX

UNIT#	TYPE	CHAN	DIST. (m)	COMMENTS	NOTE ESTIMATOR	NOTE NUMERATOR
1	RI	00	3.2		CT MT D15 S LT ST	
2	LP	00	38.8	CC	FRY, CULVERT H=2.1, W=3.0	
3	RI	00	42.5		WETTED W=2.8, L=2.2	
6	LP	00	79.5	DJ	OLD CABLE IN DJ, POS. OLD BRG	
10	LP	00	134.9		SCULPIN	
13	LP	00	164.5	DJ		
15	LP	00	199.8		FRY	
17	LP	00	233.5	DJ		
18	LP	00	248.5	DJ		
19	RI	01	253.6		CT MT M30 S LT ST	
21	LP	00	270.4	DJ, BV	FRY	
23	LP	00	296.3	BV		
24	RI	00	318.5	DJ		
25	RI	01	345.6	/TJ		
27	RI	00	355.5	DJ		
28	LP	00	367.8		FRY	
30	GL	00	403.9	BV		
31	LP	00	418.3	BV, DJ		
32	RI	01	433.5	DJ		
33	BW	10	433.5	BV		
34	BW	10	433.5	DJ		

# Comment Summary

## Restoration Monitoring Sites 2005

MONITORING AREA: **2-MC**      SITE ID: **224**      HAIGHT CREEK PRE-TX

UNIT#	TYPE	CHAN	DIST. (m)	COMMENTS	NOTE ESTIMATOR	NOTE NUMERATOR
35	LP	00	454.3	BV	FRY	
37	LP	01	473.4	BV, DJ		
38	IP	10	473.4		FRY, SALAMANDERS	
42	LP	00	511.6	WL	RACOON	
43	RI	01	539.6	DJ	CT MT S D15 LT ST	
49	RI	00	601.9	DJ		
51	LP	00	625		ADULT FISH	
52	RI	00	629.4		START SIGNS: RRNG, SNKL, OR PL	
53	LP	00	646.3		FRY	
55	BW	10	664.5		FRY	
56	LP	00	681.7	DJ, BV	FRY	
58	LP	00	707.2	BV, DJ	JUV. TROUT, FRY	
59	GL	00	731.1	DJ		
61	LP	00	768.1	BV, DJ		
62	RI	00	773.7		CT MT D3 S ST LT	
63	LP	00	789.4	DJ, BV		
65	LP	00	818.8		FRY	
67	LP	00	846.2	BV	FRY	
68	RI	01	860.7	DJ		
70	LP	00	893.1	BV	FRY, SCULPIN	
71	SL	00	893.7	DJ	H=0.35	

# Comment Summary

## Restoration Monitoring Sites 2005

MONITORING AREA: **2-MC**      SITE ID: **224**      HAIGHT CREEK PRE-TX

UNIT#	TYPE	CHAN	DIST. (m)	COMMENTS	NOTE ESTIMATOR	NOTE NUMERATOR
73	RI	00	931.6			FISH
74	LP	00	948.9	DJ		FRY, JUV. TROUT 5 INCH
75	LP	00	962			SCULPIN
77	LP	01	983.5	DJ		FRY
82	LP	00	1020.2			SALAMANDERS
86	LP	01	1042.8	DJ		01 FOR 02 CHANNEL STARTS HERE,
87	RI	01	1048.6			NOT IN UNIT 83
88	LP	01	1057.6			TROUT FRY
92	PD	02	1076.5	DJ		
98	RI	00	1138.5	DJ		
99	GL	00	1159			FRY, SALAMANDER
100	LP	00	1167.9	DJ		
101	RI	01	1177.2	DJ		
103	LP	00	1196.6	DJ, BV		SALAMANDER
105	LP	00	1229.6	DJ, BV		
108	RI	00	1246.7			CA MT D3 S LT ST
109	LP	00	1264.8	DJ, BV		
111	LP	00	1291.7	DJ, BV		
112	RI	00	1298.4	DJ		
113	LP	00	1301.8	DJ		
114	LP	00	1325.5	BV, DJ		

# Comment Summary

## Restoration Monitoring Sites 2005

MONITORING AREA: **2-MC**      SITE ID: **224**      HAIGHT CREEK PRE-TX

UNIT#	TYPE	CHAN	DIST. (m)	COMMENTS	NOTE ESTIMATOR	NOTE NUMERATOR
115	GL	00	1339.8	DJ		
116	RI	00	1343.6	BV, DJ	BV DAM AT END OF UNIT, NO STEP	
117	DP	00	1386.2		AMPHIBIAN EGGS	
118	GL	00	1408.9	DJ, BV /SS	JUV. FISH	
120	LP	00	1435.5	DJ		
121	RI	00	1449.5	DJ		
124	RI	00	1476.9	DJ		
126	RI	00	1492.8		CT MT M30 D15 ST LT	
128	RI	01	1504.5	DJ		
134	AL	10	1550.5	DJ	SALAMANDERS, UNIT IS PD MOST	
135	RI	01	1559.6		OF THE WAY (LOW H2O)	
137	LP	00	1576.1		FRY	
141	LP	00	1615.7	DJ	SCULPIN	
142	RI	00	1622.4	DJ		
146	LP	00	1652.4	DJ		
149	LP	00	1689.4	DJ		
150	RI	01	1714.7	DJ, TJ/	SHITTEN CREEK	
152	LP	11	1714.7	CE	W=0.95, H=0.95	
153	RI	01	1726.5	DJ	54	
157	RI	01	1745.7	DJ	CT MT D15 D3 ST LT	
161	LP	02	1758.8		AMPHIB EGGS (TWO TYPES)	

# Comment Summary

## Restoration Monitoring Sites 2005

MONITORING AREA: **2-MC**      SITE ID: **224**      HAIGHT CREEK PRE-TX

UNIT#	TYPE	CHAN	DIST. (m)	COMMENTS	NOTE ESTIMATOR	NOTE NUMERATOR
165	IP	10	1758.8	/SS		
169	LP	00	1783.9	DJ		
170	RI	00	1792.1	DJ		
171	LP	00	1796	DJ		
173	RI	00	1837	DJ		
174	LP	00	1857.1	DJ	FRY, 5 IN TROUT	
175	RI	00	1866.4	BV, DJ		
176	LP	00	1882.7	BV, DJ		
182	LP	01	1962.2	/TJ		
185	GL	00	1976.9	DJ		
187	BW	10	1991.7		CT MT D3 D15 LT ST	
191	GL	00	2020.1		FRY	
193	LP	00	2038.4	DJ		
194	SL	00	2039.1		H=0.4	
199	LP	00	2081.8	DJ		
200	LP	00	2091.2	DJ		
202	LP	00	2106.7	DJ	FRY	
203	LP	00	2117.6		LOTS OF FRY	
206	LP	01	2166.4		FRY	
207	LP	01	2176.1	DJ		
209	LP	00	2187.4	DJ		

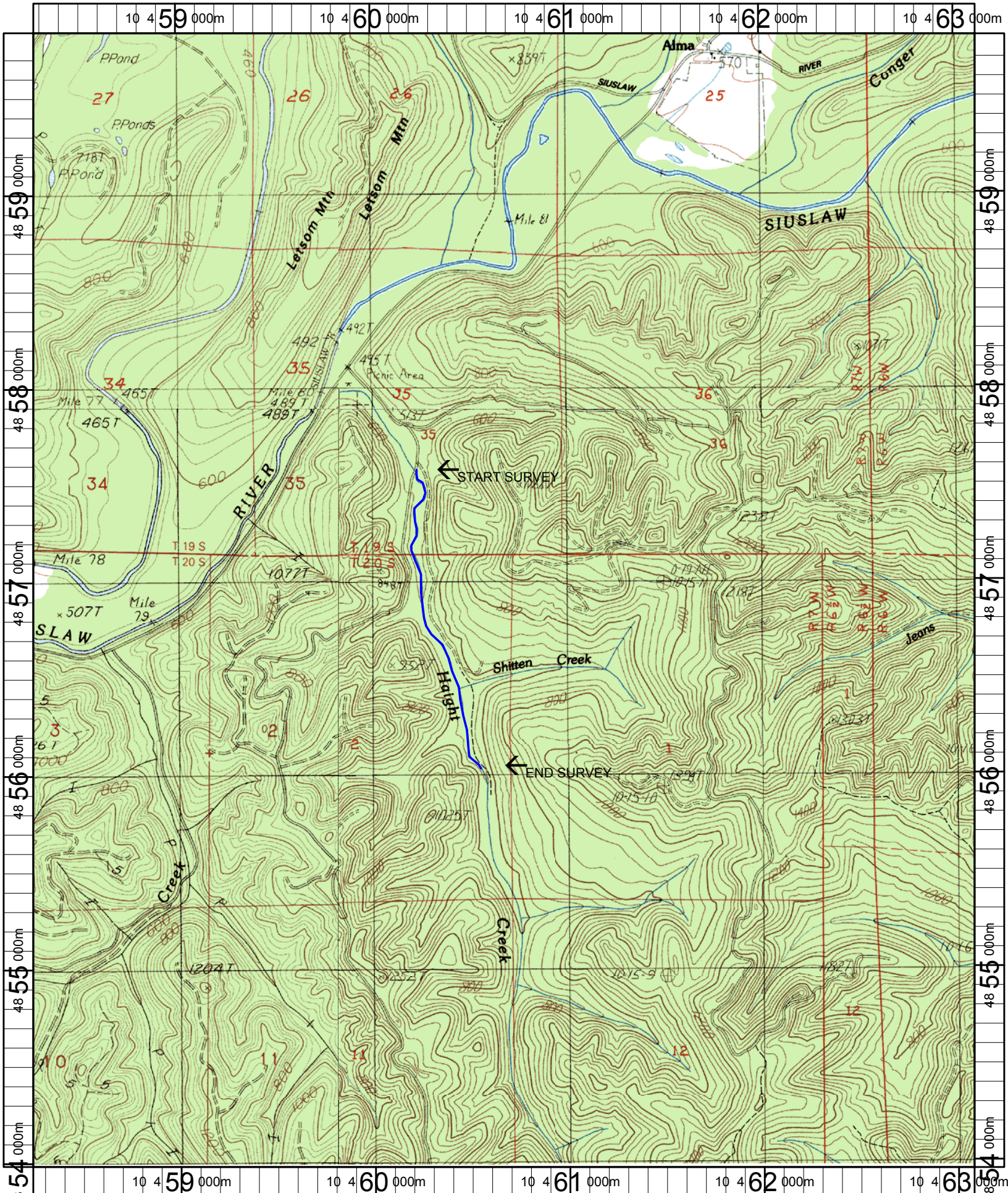


# Comment Summary

## Restoration Monitoring Sites 2005

MONITORING AREA: 2-MC      SITE ID: 224      HAIGHT CREEK PRE-TX

<u>UNIT#</u>	<u>TYPE</u>	<u>CHAN</u>	<u>DIST. (m)</u>	<u>COMMENTS</u>	<u>NOTE ESTIMATOR</u>	<u>NOTE NUMERATOR</u>
211	LP	00	2221.2	DJ	CT MT D15 D3 ST TLT	
218	LP	00	2307.5	DJ		
220	RI	11	2320.7	DJ		
223	GL	00	2341.3		CH MV S D30 ST LT	



Name: BEAVER CREEK  
 Date: 6/13/2005  
 Scale: 1 inch equals 2000 feet

Location: 10 460675 E 4856899 N  
 Caption: HAIGHT CREEK RESTORATION SITE - SIUSLAW BASIN