

**ODFW AQUATIC INVENTORY PROJECT**  
**OREGON PLAN FOR SALMON & WATERSHEDS**  
**STREAM RESTORATION HABITAT REPORT**

STREAM: Long Prairie Creek (MC-222)  
BASIN: Siletz River  
SURVEY TYPE: Pre-Tx  
DATE: March 3, 2004  
SURVEY CREW: April Waters, Jim Andrews  
REPORT PREPARED BY: Paul Jacobsen  
BASIN AREA: 13.4 km<sup>2</sup>  
USGS MAPS: Eddyville  
ECOREGION: Coast Range Sedimentary

**GENERAL DESCRIPTION:**

The Long Prairie Creek habitat survey extended 2,427 meters. The channel was constrained by terraces in a broad valley floor. The average valley width index was 7.7 (range: 2.0-15.0). Land use for the reach was second growth (15-30 cm dbh) and large (30-50 cm dbh) trees. The average unit gradient was 0.8 percent. Scour pools (64%) and riffles (21%) dominated stream habitat. Gravel (35%) and sand (28%) dominated stream substrate. Wood volume was low at 18.9 m<sup>3</sup>/100m.

**COMMENTS:**

There were no potential barriers to upstream fish migration in the surveyed length.

The crew noted beaver activity during the survey.

REACH 1

T10S-R09W-S16NE

REACH 1

**Valley and Channel Summary**

Valley Characteristics (Percent Reach Length)

<u>Narrow Valley Floor</u>		<u>Broad Valley Floor</u>	
Steep V-shape	0%	Constraining Terraces	100%
Moderate V-shape	0%	Multiple Terraces	0%
Open V-shape	0%	Wide Floodplain	0%
Valley Width Index	7.7	VWI Range:	2 - 15

Channel Morphology (Percent Reach Length)

<u>Constrained</u>		<u>Unconstrained</u>	
Hillslope	0%	Single Channel	0%
Bedrock	0%	Multiple Channel	0%
Terrace	100%	Braided Channel	0%
Alt. Terrace/Hill	0%		
Landuse	0%		

Channel Characteristics

<u>Type</u>	<u>Length (m)</u>	<u>Area (m2)</u>	<u>Dry Units</u>
Primary	2,427	13,138	0
Secondary	295	633	0

Channel Dimensions (m)

<u>Wetted</u>	<u>Active</u>	<u>Floodprone</u> n = 11	<u>First Terrace</u> n = 11
Width: 4.5	Width: 6.4	8.4 ( 5.2 - 14.1 )	9.9 ( 5.5 - 16.2 )
Depth: 0.59	Height: 0.4	0.9 ( 0.6 - 1.2 )	1.3 ( 1.05 - 1.5 )

W:D ratio: 15.4	Entrenchment (ACW:FPW ratio): 1.4
Stream Flow Type: MF	Water temp (°C): 8.0 - 8.0
Avg. Unit Gradient: 0.8%	Habitat Units/100m: 6.4

**Riparian, Bank, and Wood Summary**

	<u>Primary</u>	<u>Secondary</u>
Land Use:	ST	LT
Riparian Vegetation:	G	D30

Bank Condition and Shade

<u>Bank Status</u>	<u>Percent Reach Length</u>	<u>Shade (% of 180)</u>
Actively Eroding:		Reach avg:
Undercut Banks:		Range: -

Large Wood Debris

	<u>Total</u>	<u>Total / 100m</u>
All pieces (>=3m x 0.15m):	353	14.5
Volume (m <sup>3</sup> ):	458	18.9
Key pieces (>=10m x 0.60m):	31	1.3

OREGON DEPARTMENT OF FISH AND WILDLIFE

LONG PRAIRIE CREEK PRE-TX (MC-222)

HABITAT INVENTORY

Report Date: 6/16/2004

Survey Date:

3/3/2004

REACH 1

T10S-R09W-S16NE

REACH 1

HABITAT DETAIL

Habitat Type	Number Units	Total Length (m)	Avg Width (m)	Avg Depth (m)	Total Area (m <sup>2</sup> )	Large Boulders (#>0.5m)	Substrate Percent Wetted Area					
							S/O	Snd	Grvl	Cbl	Bldr	Bdrk
CASCADE/BEDROCK	2	8	0.5	0.04	4	0	16	0	2	2	0	79
CASCADE/BOULDERS	5	19	1.0	0.09	20	0	0	5	59	34	2	0
POOL-ALCOVE	2	12	2.4	0.50	30	0	60	35	5	0	0	0
POOL-BACKWATER	8	47	1.7	0.50	80	0	40	33	4	3	2	17
POOL-DAMMED	1	15	5.0	0.80	74	0	15	40	40	5	0	0
POOL-LATERAL SCOUR	87	1,590	4.9	0.87	8,378	0	5	38	32	9	4	12
POOL-PLUNGE	3	26	8.1	0.90	223	0	10	44	26	8	7	5
POOL-STRAIGHT SCOUR	1	44	4.0	0.80	174	0	0	17	43	26	0	13
RAPID/BEDROCK	8	264	5.6	0.24	1,474	0	0	5	4	3	6	82
RAPID/BOULDERS	5	44	2.4	0.17	179	0	1	3	53	29	9	4
RIFFLE	40	579	4.3	0.28	2,728	0	2	13	52	18	3	11
RIFFLE W/ POCKETS	2	36	4.8	0.45	183	0	3	19	11	19	33	14
STEP/BEDROCK	2	14	7.1	0.15	91	0	0	28	0	0	0	73
STEP/COBBLE	3	19	5.1	0.27	102	0	0	15	43	31	5	5
STEP/LOG	6	6	4.5	0.15	30	0	5	40	50	4	0	0
<b>Total:</b>	<b>175</b>	<b>2,722</b>	<b>4.5</b>	<b>0.59</b>	<b>13,771</b>	<b>0</b>	<b>Avg: 6</b>	<b>28</b>	<b>35</b>	<b>12</b>	<b>4</b>	<b>15</b>

HABITAT SUMMARY

Habitat Group	Number Units	Total Length (m)	Avg Width (m)	Avg Depth (m)	Wetted Area		Large Boulders	
					(m <sup>2</sup> )	Percent	Number	(# / 100m <sup>2</sup> )
Dammed & BW Pools	11	74	2.1	0.53	183	1.33%	0	0.0
Scour Pools	91	1,660	5.0	0.87	8,776	63.73%	0	0.0
Glides	0	0			0	0.00%	0	0.0
Riffles	42	615	4.3	0.29	2,912	21.14%	0	0.0
Rapids	13	308	4.4	0.21	1,653	12.00%	0	0.0
Cascades	7	27	0.9	0.07	24	0.18%	0	0.0
Step/Falls	11	39	5.1	0.18	223	1.62%	0	0.0
Dry	0	0			0	0.00%	0	0.0
Culverts	0	0			0	0.00%	0	0.0

POOL SUMMARY

	<u>Total</u>	<u># / Km</u>	
All Pools:	102	37.5	295
Pools >=1m deep:	34	12.5	
Complex pools (LWD pieces>=3):	33	12.1	
Pool frequency (channel widths/pool):	4.2		
Residual pool depth (avg):	0.59		

**STREAM SUMMARY**

**LONG PRAIRIE CREEK PRE-TX (MC-222)**

Number Units	Total Length (m)	Avg Width (m)	Avg Depth (m)	Total Area (m <sup>2</sup> )	Substrate Percent Wetted Area						Large Boulders (#>0.5m)
					S/O	Snd	Grvl	Cbl	Bldr	Bdrk	
175	2,722	4.5	0.59	13,771	6	28	35	12	4	15	

Habitat Group	Wetted Area	
	(m <sup>2</sup> )	Percent
Dammed & BW Pools	183	1.33%
Scour Pools	8,776	63.73%
Glides	0	0.00%
Riffles	2,912	21.14%
Rapids	1,653	12.00%
Cascades	24	0.18%
Step/Falls	223	1.62%
Dry	0	0.00%
Culverts	0	0.00%

# Comment Summary

## Oregon Plan Monitoring Sites 2002

MONITORING AREA: **2-MC**      SITE ID: **222**      LONG PRAIRIE CREEK PRE-TX (MC-

UNIT#	TYPE	CHAN	DIST. (m)	COMMENTS	NOTE ESTIMATOR	NOTE NUMERATOR
1	LP	00	1.1	BV	T=8C/1300	
3	RI	01	41	BV	4.3 WETTED WIDTH	
4	LP	02	41		RT SIDE CHNL	
6	LP	02	61.4		RT SIDE CHNL	
7	AL	10	61.4		RT SIDE RT CHNL	
9	LP	01	92.2		RT SIDE	
10	RI	02	92.2		LF SIDE	
12	LP	00	140.9	DJ		
15	LP	01	155.6	DJ	LF SIDE	
16	LP	02	155.6	BV	RT SIDE	
17	LP	01	181	/TJ	HUGE BLDRS	
18	CB	11	181		.55M ACW, T=8C	
19	RI	00	208.1	WL	SG=6M, 3M WETTED WID	
20	LP	01	217.4	/TJ, /SS	SG=4M	
21	CB	11	217.4		T=7.5C, 1.1M ACW	
22	LP	00	237.9	BV		
25	LP	00	317.9	BV		
26	LP	00	338.9	BV		
27	LP	00	355.5	BV		
28	LP	00	367.7	BV		
29	RI	00	376.5		ODFW SIGN "16"	

# Comment Summary

## Oregon Plan Monitoring Sites 2002

MONITORING AREA: **2-MC**      SITE ID: **222**      LONG PRAIRIE CREEK PRE-TX (MC-

UNIT#	TYPE	CHAN	DIST. (m)	COMMENTS	NOTE ESTIMATOR	NOTE NUMERATOR
31	LP	00	401	DJ, SS/		
37	RI	00	481.7	BV		
40	SL	00	534.8	CE/	DRY CE/	
41	LP	01	561.1		SPAWN SIGN "END SEG 1	
42	BW	10	561.1	DJ	LF SIDE	
47	LP	01	595.2		FISH BONES	
48	LP	02	595.2	/TJ	STHD	
51	LP	00	609.7		STHD, REDD, SG=4M	
52	RI	00	631.9	BV	SG=4M	
55	LP	00	679.1	BV	REDD, SG=4M	
56	LP	00	693.3	/TJ	FISH BONES	
57	LP	01	721.1	BV, DJ	NEWT	
59	RB	11	721.1		TRIB UNIT	
61	LP	00	756.7	DJ	SG=4M	
62	RI	01	765.9	CE	SG=4M	
63	LP	01	779.3	BV	RT CHNL	
64	RI	02	779.3		LF CHNL	
67	LP	01	822.8	DJ, /TJ		
68	CB	11	822.8		ACW=1.4, T=8.5C	
69	RI	01	832.6		SG=4M	
70	BW	10	832.6	/SS	FISH BONES	

# Comment Summary

## Oregon Plan Monitoring Sites 2002

MONITORING AREA: **2-MC**      SITE ID: **222**      LONG PRAIRIE CREEK PRE-TX (MC-

UNIT#	TYPE	CHAN	DIST. (m)	COMMENTS	NOTE ESTIMATOR	NOTE NUMERATOR
71	LP	00	861.4	BV		10% BRK, 5% HARDPAN
72	LP	00	879.5	BV		HARDPAN
73	SL	00	880.5	DJ, BV		
74	LP	00	892.6	BV		
75	LP	01	902.9			RT CHNL
76	BW	10	902.9			HARDPAN
78	LP	00	943.1	BV		
79	LP	00	963.3	WL		DEER TRAIL
80	RI	01	969.6	/TJ		
81	CR	11	969.6			T=7.8C/0910, .75M ACW
86	LP	00	1035.8			HP
87	RI	00	1043.8			SG=6M, 3 COHO REDDS
88	LP	00	1076.5	BV		
91	LP	00	1148.4			5% HP
92	SL	00	1149	DJ		
94	LP	01	1197.5	TJ/		SG=4M, STHD, COHO, RE
95	RI	11	1197.5			T=8C/1020
97	LP	00	1246	BV, DJ		
98	LP	00	1272.1	BV		SG=4M
99	RI	00	1280.4	BV		
100	LP	00	1304.8	BV		SG=4M

# Comment Summary

## Oregon Plan Monitoring Sites 2002

MONITORING AREA: **2-MC**      SITE ID: **222**      LONG PRAIRIE CREEK PRE-TX (MC-

UNIT#	TYPE	CHAN	DIST. (m)	COMMENTS	NOTE ESTIMATOR	NOTE NUMERATOR
101	RI	00	1323.6	BV	REDD, GRN ROCK	
103	RI	01	1371.2		RT CHNL	
104	RI	02	1371.2	BV	LF CHNL	
107	LP	00	1397.9	BV		
109	LP	00	1435.1	BV		
110	RI	01	1449	/TJ		
111	CR	11	1449	HARDPAN	.4M ACW, T=8C/1120	
112	LP	00	1464.6	BV		
113	RR	00	1483.1	BV		
115	LP	01	1530.1	BV		
116	RI	02	1530.1		FISH BONES	
117	LP	02	1530.1	WL, BV	1" FISH	
118	LP	00	1558.8	BC, BV, CS	SG=4M, REDD	
119	LP	00	1580.6		HP	
121	SC	00	1608.3	BV		
122	LP	00	1626.3	BV		
123	SR	00	1638.4	BV		
125	LP	00	1677.7	BV		
126	LP	00	1700.8	BV		
127	SC	00	1707.1	BV		
128	LP	00	1732.3	BV		



# Comment Summary

## Oregon Plan Monitoring Sites 2002

MONITORING AREA: **2-MC**      SITE ID: **222**      LONG PRAIRIE CREEK PRE-TX (MC-

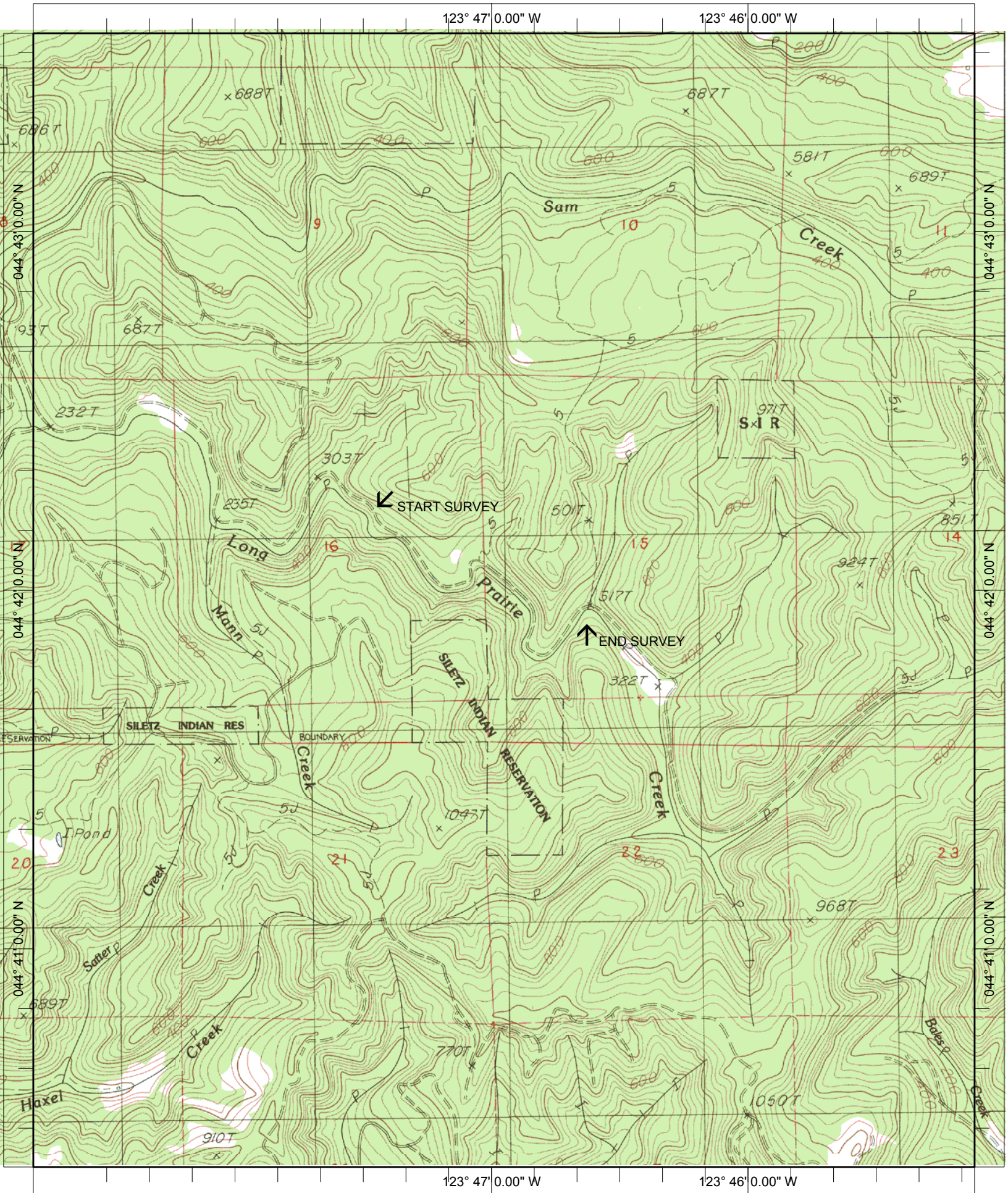
UNIT#	TYPE	CHAN	DIST. (m)	COMMENTS	NOTE ESTIMATOR	NOTE NUMERATOR
130	BW	10	1772.5	BV		
131	RP	00	1797.8	BV		
132	LP	00	1814.8	BV		
134	RB	00	1858.5	BV, BC		
135	RI	02	1858.5	BV	RT CHNL, 52% FLOW	
136	RP	01	1869.5	BV		
137	RI	01	1875.5	DJ		
138	LP	02	1875.5		LF CHNL, 10% HP	
140	LP	02	1875.5	BV		
143	LP	00	1890.3	BV		
144	RR	01	1921.5	/TJ		
145	CB	11	1921.5		T=9C/1411, 20% FLOW	
146	RR	00	1963.8	BV		
148	RR	00	2006.4	/SS, BV	5% HP	
149	RR	01	2056.7	/SS, /TJ		
151	RB	11	2056.7		T=9C	
153	RI	01	2108.6	BV		
156	RR	00	2159.9	BV		
158	RI	00	2198		OLD REDDS, SG=4M	
159	PP	00	2208.2		ADULT FISH	
162	LP	00	2248.8		10% HP	

# Comment Summary

## Oregon Plan Monitoring Sites 2002

MONITORING AREA: 2-MC      SITE ID: 222      LONG PRAIRIE CREEK PRE-TX (MC-

UNIT#	TYPE	CHAN	DIST. (m)	COMMENTS	NOTE ESTIMATOR	NOTE NUMERATOR
164	SP	00	2301.9	CS	5% HP	
165	LP	00	2321.1	WL	SG=4M, DEER TRACK	
166	LP	00	2351.7	SS/SS	REDD, "WILDLIFE LEAVE	
167	LP	01	2366.3	WL	TAG BOISE CASCADE	
170	LP	00	2387.2	SS/		
174	RI	01	2427.4	/SS, TJ/	T=8.5C/1545	
175	RB	11	2427.4		EOS 8M ABOVE TJ	



Name: EDDYVILLE  
 Date: 7/22/2004  
 Scale: 1 inch equals 2000 feet

Location: 044° 41' 58.4" N 123° 46' 57.2" W  
 Caption: LONG PRAIRIE CREEK RESTORATION SITE - SILETZ BASIN