



OREGON DEPARTMENT OF FISH AND WILDLIFE

CRAB CREEK POST-TX (MC-20)

HABITAT INVENTORY

Report Date: 5/6/03

Survey Date:

1/30/03

REACH		T15S-R10W-S12SE					REACH					
Habitat Type	Number Units	Total Length (m)	Avg Width (m)	Avg Depth (m)	Total Area (m <sup>2</sup> )	Large Boulders (#>0.5m)	Substrate					
							Percent Wetted Area					
							S/O	Snd	Grvl	Cbl	Bldr	Bdrk
GLIDE	1	30	11.1	0.60	333	0	25	35	40	0	0	0
POOL-BACKWATER	1	15	8.0	0.70	120	0	10	30	60	0	0	0
POOL-LATERAL SCOUR	10	236	9.6	1.11	2,221	0	22	33	43	2	0	1
RIFFLE	14	347	7.4	0.59	2,599	0	22	29	47	2	0	0
RIFFLE W/ POCKETS	2	40	13.5	0.45	538	0	8	28	65	0	0	0
STEP/COBBLE	2	14	0.4	0.10	6	0	3	18	65	15	0	0
<b>Total:</b>	<b>30</b>	<b>682</b>	<b>8.2</b>	<b>0.73</b>	<b>5,817</b>	<b>0</b>	<b>Avg 19</b>	<b>30</b>	<b>48</b>	<b>3</b>	<b>0</b>	<b>0</b>

HABITAT SUMMARY								
Habitat Group	Number Units	Total Length (m)	Avg Width (m)	Avg Depth (m)	Wetted Area		Large Boulders	
					(m <sup>2</sup> )	Percent	Number	(# / 100m <sup>2</sup> )
Dammed & BW Pools	1	15	8.0	0.70	120	2.06%	0	0.0
Scour Pools	10	236	9.6	1.11	2,221	38.19%	0	0.0
Glides	1	30	11.1	0.60	333	5.72%	0	0.0
Riffles	16	387	8.2	0.57	3,137	53.93%	0	0.0
Rapids	0	0			0	0.00%	0	0.0
Cascades	0	0			0	0.00%	0	0.0
Step/Falls	2	14	0.4	0.10	6	0.09%	0	0.0
Dry	0	0			0	0.00%	0	0.0
Culverts	0	0			0	0.00%	0	0.0

POOL SUMMARY		
	<u>Total</u>	<u># / Km</u>
All Pools:	11	18.0
Pools >=1m deep:	10	16.4
Complex pools (LWD pieces>=3):	4	6.6
Pool frequency (channel widths/pool):	5.8	
Residual pool depth (avg):	0.46	

**STREAM SUMMARY**

**CRAB CREEK POST-TX (MC-20)**

Number Units	Total Length (m)	Avg Width (m)	Avg Depth (m)	Total Area (m <sup>2</sup> )	Substrate						Large Boulders (#>0.5m)
					Percent Wetted Area						
					S/O	Snd	Grvl	Cbl	Bldr	Bdrk	
30	682	8.2	0.73	5,817	19	30	48	3	0	0	

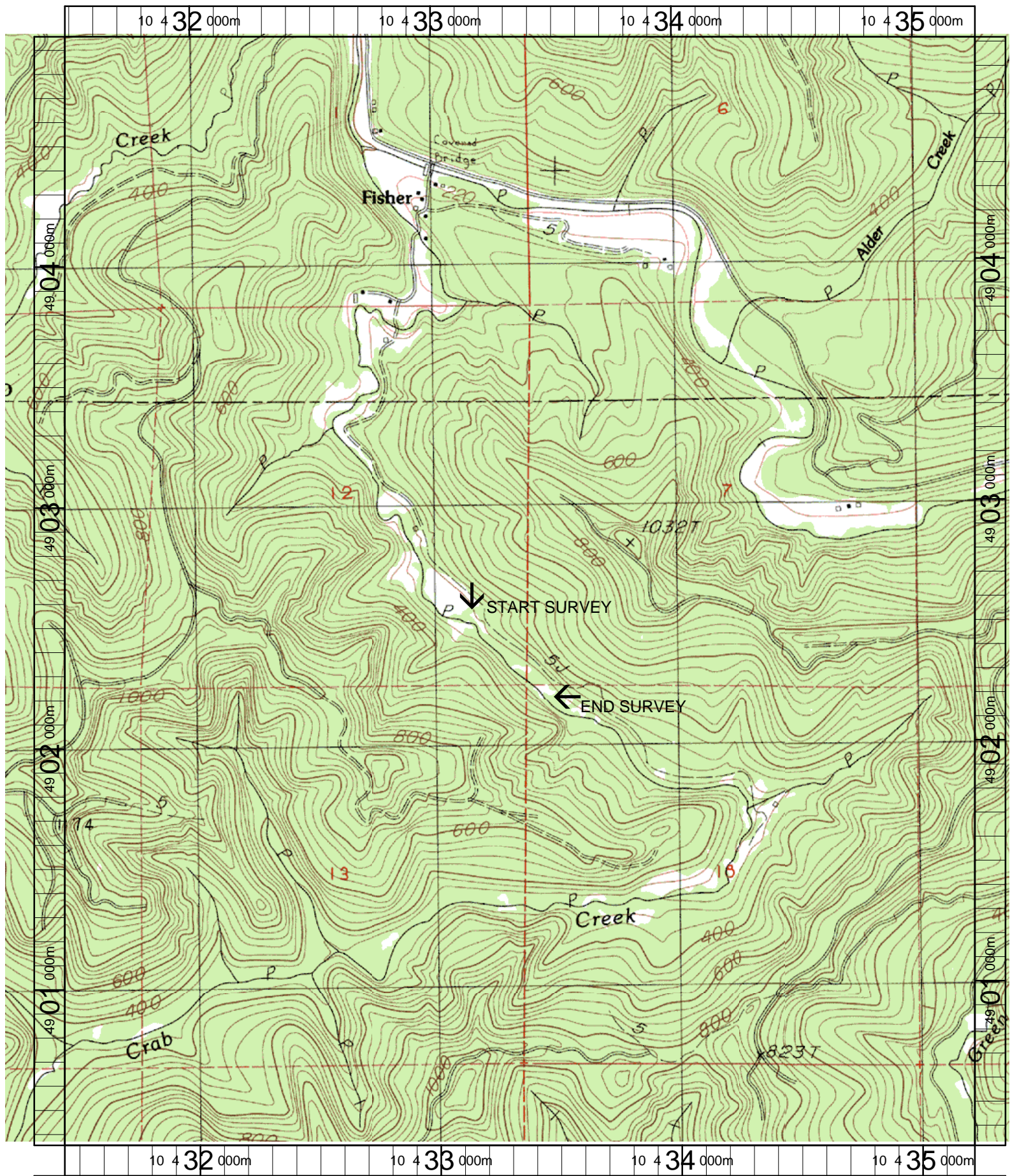
Habitat Group	Wetted Area	
	(m <sup>2</sup> )	Percent
Dammed & BW Pools	120	2.06%
Scour Pools	2,221	38.19%
Glides	333	5.72%
Riffles	3,137	53.93%
Rapids	0	0.00%
Cascades	0	0.00%
Step/Falls	6	0.09%
Dry	0	0.00%
Culverts	0	0.00%

# Comment Summary

## Restoration Monitoring Sites 2003

MONITORING AREA: 2-MC    SITE ID: 20    CRAB CREEK POST-TX (MC-20)

UNIT#	TYPE	CHAN	DIST. (m)	COMMENTS	NOTE ESTIMATOR	NOTE NUMERATOR
1	LP	00	15.7	/TJ, BV	START SIGN ALDER/, T=1	
2	RI	00	45.7	HS		
3	RI	00	75.7	HS		
4	LP	00	89.5	WL/	ELK TRAILS	
6	SC	11	104.7	TJ/	TRIB UNIT	
7	LP	00	134.7	WL/	ELK TRAILS TROUGHOUT	
8	RI	00	163.7	DJ		
10	RI	00	223.7	SS/, BV		
11	RI	01	253.7	/TJ		
12	SC	11	253.7		TRIB UNIT	
14	LP	00	307.2	BV	1 CHINOOK CARCASS	
18	RP	00	397.2	/SS		
20	RI	00	453	HS		
23	LP	01	519.6	BV		
24	RI	01	543.6		FISH CARCASS	
26	LP	01	567.2	DJ		
30	LP	00	609.9	TJ/	EOS, T=10C, END SIGN A	



Name: FIVE RIVERS  
 Date: 3/20/2003  
 Scale: 1 inch equals 1666 feet

Location: 10 433345 E 4902640 N  
 Caption: CRAB CREEK RESTORATION SITE - ALSEA BASIN