

ODFW AQUATIC INVENTORY PROJECT
OREGON PLAN FOR SALMON & WATERSHEDS
STREAM RESTORATION HABITAT REPORT

STREAM: Wright Creek (MC-179)
BASIN: Yaquina River
SURVEY TYPE: Post-Tx
DATE: March 9, 2006
SURVEY CREW: Brian Cannon, Jon Nott
REPORT PREPARED BY: Paul Jacobsen
BASIN AREA: 16.8 km³
USGS MAPS: Toledo South
ECOREGION: Coast Range Sitka Spruce

GENERAL DESCRIPTION:

The Wright Creek habitat survey extended 504 meters. The channel was unconstrained in a broad valley floor. The average valley width index was 3.2 (range: 1.3-4.3). Land use for the reach was second growth (15-30 cm dbh) and large (30-50 cm dbh) trees. The average unit gradient was 0.6 percent. Scour pools (52%) and riffles (48%) comprised stream habitat. Sand (56%) and gravel (39%) dominated stream substrate. Wood volume was moderate at 26.5 m³/100m.

COMMENTS:

There were no potential barriers to upstream fish migration in the surveyed length.

The crew noted several habitat structures during the survey.

REACH 1

T12S-R10W-S06NW

REACH 1

Valley and Channel Summary

Valley Characteristics (Percent Reach Length)

<u>Narrow Valley Floor</u>		<u>Broad Valley Floor</u>	
Steep V-shape	0%	Constraining Terraces	0%
Moderate V-shape	0%	Multiple Terraces	100%
Open V-shape	0%	Wide Floodplain	0%
Valley Width Index	3.2	VWI Range:	1.3 - 4.3

Channel Morphology (Percent Reach Length)

<u>Constrained</u>		<u>Unconstrained</u>	
Hillslope	0%	Single Channel	100%
Bedrock	0%	Multiple Channel	0%
Terrace	0%	Braided Channel	0%
Alt. Terrace/Hill	0%		
Landuse	0%		

Channel Characteristics

<u>Type</u>	<u>Length (m)</u>	<u>Area (m2)</u>	<u>Dry Units</u>
Primary Channel	504	3,036	0
Secondary Channel	0	0	0
Off-Channel Units	0	0	0

Channel Dimensions (m)

<u>Wetted</u>	<u>Active</u>	<u>Floodprone</u>	<i>n = 5</i>	<u>First Terrace</u>	<i>n = 0</i>
Width: 6.0	Width: 8.2	25.0	(12.4 - 32.5)	(-)	
Depth: 0.72	Height: 0.6	1.3	(1.2 - 1.3)	(-)	

W:D ratio: 13.0 Entrenchment (ACW:FPW ratio): 3.2
 Stream Flow Type: MF Habitat Units/100m (total channel length): 5.0
 Average Unit Gradient: 0.6% Habitat Units/100m (primary channel length): 5.0
 Water temperature (°C): 7.0 - 7.0

Riparian, Bank, and Wood Summary

	<u>Primary</u>	<u>Secondary</u>
Land Use:	ST	LT
Riparian Vegetation:	D30	G

Bank Condition and Shade

<u>Bank Status</u>	<u>Percent Reach Length</u>	<u>Shade (% of 180)</u>
Actively Eroding:		Reach avg:
Undercut Banks:		Range: -

Large Wood Debris

	<u>Total</u>	<u>Total / 100m primary channel</u>
All pieces (>=3m x 0.15m):	128	25.4
Volume (m ³):	133	26.5
Key pieces (>=12m x 0.60m):	7	1.4

OREGON DEPT OF FISH AND WILDLIFE

WRIGHT CREEK POST-TX (2-MC, 179)

HABITAT INVENTORY

Report Date: 12/6/2006

Survey Date:

3/9/2006

REACH 1		T12S-R10W-S06NW					REACH 1					
HABITAT DETAIL												
Habitat Type	Number Units	Total Length (m)	Avg Width (m)	Avg Depth (m)	Total Area (m ²)	Large Boulders (#>0.5m)	Substrate Percent Wetted Area					
							S/O	Snd	Grvl	Cbl	Bldr	Bdrk
POOL-LATERAL SCOUR	14	265	5.8	1.04	1,565	0	4	68	24	2	2	1
RIFFLE	10	229	6.2	0.30	1,415	0	0	35	62	3	0	0
RIFFLE W/ POCKETS	1	9	6.0	0.45	56	0	5	90	5	0	0	0
Total:	25	504	6.0	0.72	3,036	0	Avg: 2	56	39	2	1	0

HABITAT SUMMARY									
Habitat Group	Number Units	Total Length (m)	Avg Width (m)	Avg Depth (m)	Wetted Area		Large Boulders		
					(m ²)	Percent	Number	(# / 100m ²)	
Dammed & BW Pools	0	0			0	0.00%	0	0.0	
Scour Pools	14	265	5.8	1.04	1,565	51.55%	0	0.0	
Glides	0	0			0	0.00%	0	0.0	
Riffles	11	238	6.2	0.31	1,471	48.45%	0	0.0	
Rapids	0	0			0	0.00%	0	0.0	
Cascades	0	0			0	0.00%	0	0.0	
Step/Falls	0	0			0	0.00%	0	0.0	
Dry	0	0			0	0.00%	0	0.0	
Culverts	0	0			0	0.00%	0	0.0	

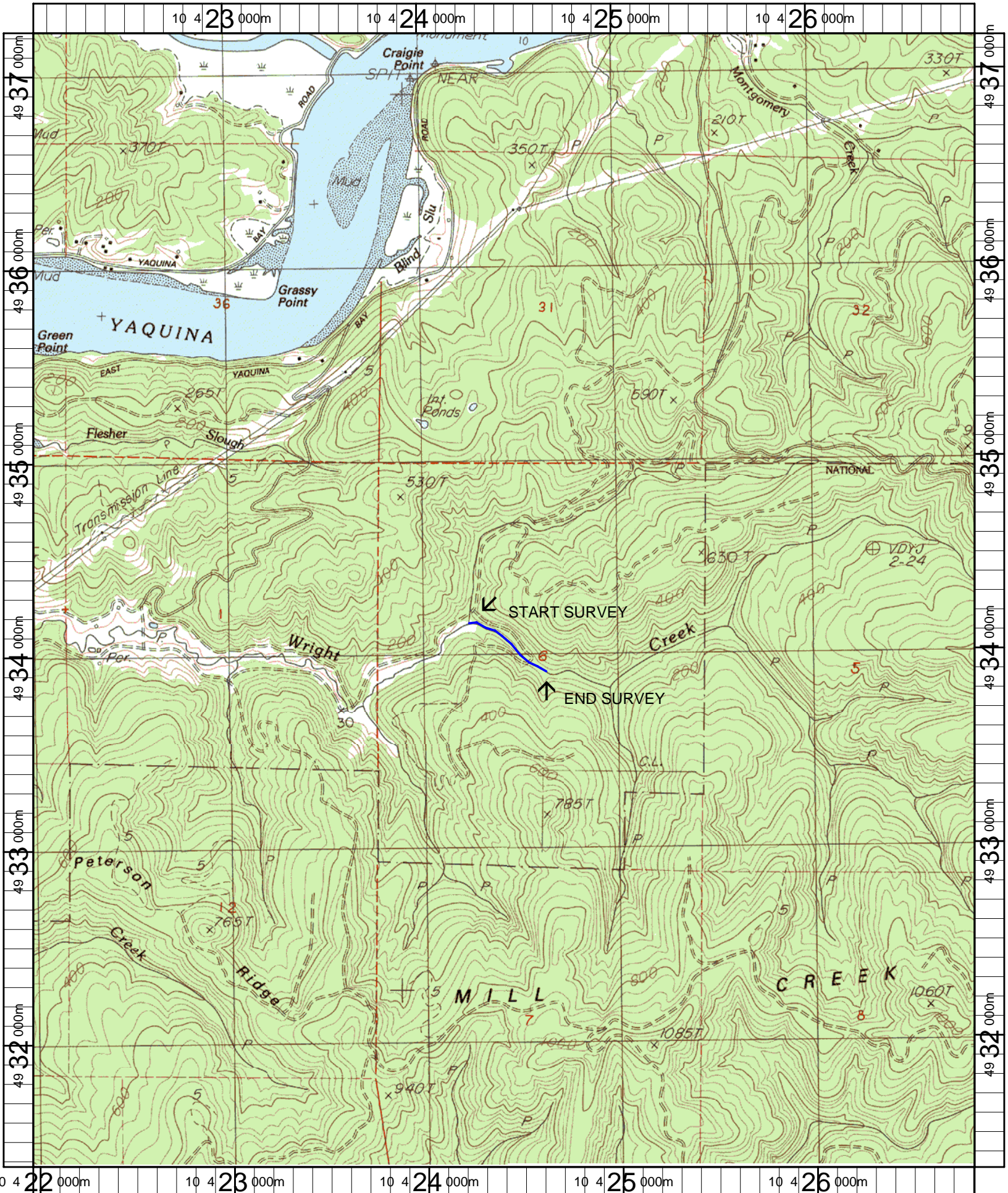
POOL SUMMARY			
	<u>Total</u>	<u>Total of all Channel Lengths</u> # / Km	<u>Primary Channel Length</u> # / Km
All Pools:	14	27.8	27.8
Pools >=1m deep:	8	15.9	15.9
Complex pools (LWD pieces>=3):	12	23.8	23.8
Pool frequency (channel widths/pool):	4.4		
Residual pool depth (avg):	0.72		

Comment Summary

Restoration Monitoring Sites 2006

MONITORING AREA: 2-MC SITE ID: 179 WRIGHT CREEK POST-LONGTERM

UNIT#	TYPE	CHAN	DIST. (m)	COMMENTS	NOTE ESTIMATOR	NOTE NUMERATOR
2	RI	00	47		US MT D30/S ST	
3	LP	00	66.2	HS	HS= 10 LOGS + 1 ROOTWAD	
4	LP	00	85	/SS		
6	LP	00	116.9	HS	6 LOGS	
8	LP	00	137.7		US MT D30/G ST	
14	LP	00	247.1	HS	7 LOGS	
16	LP	00	283.3		US MT D30/G ST/LT	
20	LP	00	358.9	HS	5 LOGS	
21	RI	00	404.9	HS	US MT D30/G ST/LT 1 LOG	
22	LP	00	424.1	BC	RIPRAP UNDER BC	
24	LP	00	451.5	/SS		
25	RI	00	503.5	/SS	CH MV D30/S ST/LT	



Name: TOLEDO SOUTH
 Date: 2/15/2007
 Scale: 1 inch equals 2000 feet

Location: 10 0424417 E 4934272 N
 Caption: WRIGHT CREEK RESTORATION SITE - YAQUINA BASIN