

ODFW AQUATIC INVENTORY PROJECT
OREGON PLAN FOR SALMON & WATERSHEDS
STREAM RESTORATION HABITAT REPORT

STREAM: Eames Creek (MC-177)
BASIN: Siuslaw River
SURVEY TYPE: Post-Tx
DATE: January 26, 2005
SURVEY CREW: Sheila Davis, Brian Bangs
REPORT PREPARED BY: Paul Jacobsen
BASIN AREA: 15.7 km²
USGS MAPS: High Point
ECOREGION: Coast Range Sedimentary

GENERAL DESCRIPTION:

The Eames Creek habitat survey extended 514 meters. The channel was constrained by terraces in a broad valley floor. The average valley width index was 15.8 (range: 9.0-20.0). Land use for the reach was large (30-50 cm dbh) and second growth (15-30 cm dbh) trees. The average unit gradient was 1.3 percent. Scour pools (55%) and riffles (29%) dominated stream habitat. Bedrock (40%) and sand (23%) dominated stream substrate. Wood volume was high at 35.2 m³/100m.

COMMENTS:

There were no potential barriers to upstream fish migration in the surveyed length.

The crew noted several habitat structures during the survey.

REACH 1

T19S-R06W-S07NE

REACH 1

Valley and Channel Summary

Valley Characteristics (Percent Reach Length)

<u>Narrow Valley Floor</u>		<u>Broad Valley Floor</u>	
Steep V-shape	0%	Constraining Terraces	0%
Moderate V-shape	0%	Multiple Terraces	100%
Open V-shape	0%	Wide Floodplain	0%
Valley Width Index	15.8	VWI Range:	9 - 20

Channel Morphology (Percent Reach Length)

<u>Constrained</u>		<u>Unconstrained</u>	
Hillslope	0%	Single Channel	0%
Bedrock	0%	Multiple Channel	0%
Terrace	100%	Braided Channel	0%
Alt. Terrace/Hill	0%		
Landuse	0%		

Channel Characteristics

<u>Type</u>	<u>Length (m)</u>	<u>Area (m2)</u>	<u>Dry Units</u>
Primary Channel	514	2,957	0
Secondary Channel	17	17	1
Off-Channel Units	16	9	0

Channel Dimensions (m)

<u>Wetted</u>	<u>Active</u>	<u>Floodprone</u> n = 5	<u>First Terrace</u> n = 5
Width: 5.3	Width: 6.1	9.5 (7.5 - 14.5)	13.5 (10.6 - 19.3)
Depth: 0.30	Height: 0.4	0.8 (0.6 - 1.2)	1.6 (1.1 - 1.85)

W:D ratio: 16.1

Entrenchment (ACW:FPW ratio): 1.6

Stream Flow Type: LF

Habitat Units/100m (total channel length): 6.8

Average Unit Gradient: 1.3%

Habitat Units/100m (primary channel length): 7.2

Water temperature (°C): 7.0 - 7.0

Riparian, Bank, and Wood Summary

	<u>Primary</u>	<u>Secondary</u>
Land Use:	LT	ST
Riparian Vegetation:	M30	S

Bank Condition and Shade

<u>Bank Status</u>	<u>Percent Reach Length</u>	<u>Shade (% of 180)</u>
Actively Eroding:		Reach avg:
Undercut Banks:		Range: -

Large Wood Debris

	<u>Total</u>	<u>Total / 100m primary channel</u>
All pieces (>=3m x 0.15m):	112	21.8
Volume (m ³):	181	35.2
Key pieces (>=12m x 0.60m):	12	2.3

OREGON DEPT OF FISH AND WILDLIFE

EAMES CREEK POST-TX (2-MC, 177)

HABITAT INVENTORY

Report Date: 11/29/2005

Survey Date:

1/24/2005

REACH 1		T19S-R06W-S07NE					REACH 1					
HABITAT DETAIL												
Habitat Type	Number Units	Total Length (m)	Avg Width (m)	Avg Depth (m)	Total Area (m ²)	Large Boulders (#>0.5m)	Substrate Percent Wetted Area					
							S/O	Snd	Grvl	Cbl	Bldr	Bdrk
CASCADE/BEDROCK	1	25	5.3	0.10	131	0	5	5	0	0	0	90
CASCADE/BOULDERS	2	11	7.0	0.08	74	0	3	3	3	0	0	93
DRY UNIT	1	14	1.1	0.00	15	0	10	20	70	0	0	0
GLIDE	2	38	5.0	0.20	193	0	10	35	0	3	0	53
POOL-LATERAL SCOUR	13	261	5.8	0.51	1,534	0	25	43	7	2	2	21
POOL-PLUNGE	2	11	8.8	0.65	96	0	10	15	3	3	2	68
RAPID/BOULDERS	1	15	4.9	0.10	71	0	5	20	15	5	45	10
RIFFLE	12	172	4.3	0.14	861	0	10	13	28	1	0	47
STEP/BEDROCK	1	0	7.4	0.10	3	0	0	0	0	0	0	100
STEP/LOG	2	1	5.3	0.25	5	0	98	3	0	0	0	0
Total:	37	547	5.3	0.30	2,983	0	Avg: 19	23	14	1	2	40

HABITAT SUMMARY									
Habitat Group	Number Units	Total Length (m)	Avg Width (m)	Avg Depth (m)	Wetted Area		Large Boulders		
					(m ²)	Percent	Number	(# / 100m ²)	
Dammed & BW Pools	0	0			0	0.00%	0	0.0	
Scour Pools	15	272	6.2	0.53	1,630	54.62%	0	0.0	
Glides	2	38	5.0	0.20	193	6.47%	0	0.0	
Riffles	12	172	4.3	0.14	861	28.86%	0	0.0	
Rapids	1	15	4.9	0.10	71	2.38%	0	0.0	
Cascades	3	36	6.4	0.08	205	6.88%	0	0.0	
Step/Falls	3	1	6.0	0.20	8	0.26%	0	0.0	
Dry	1	14	1.1	0.00	15	0.52%	0	0.0	
Culverts	0	0			0	0.00%	0	0.0	

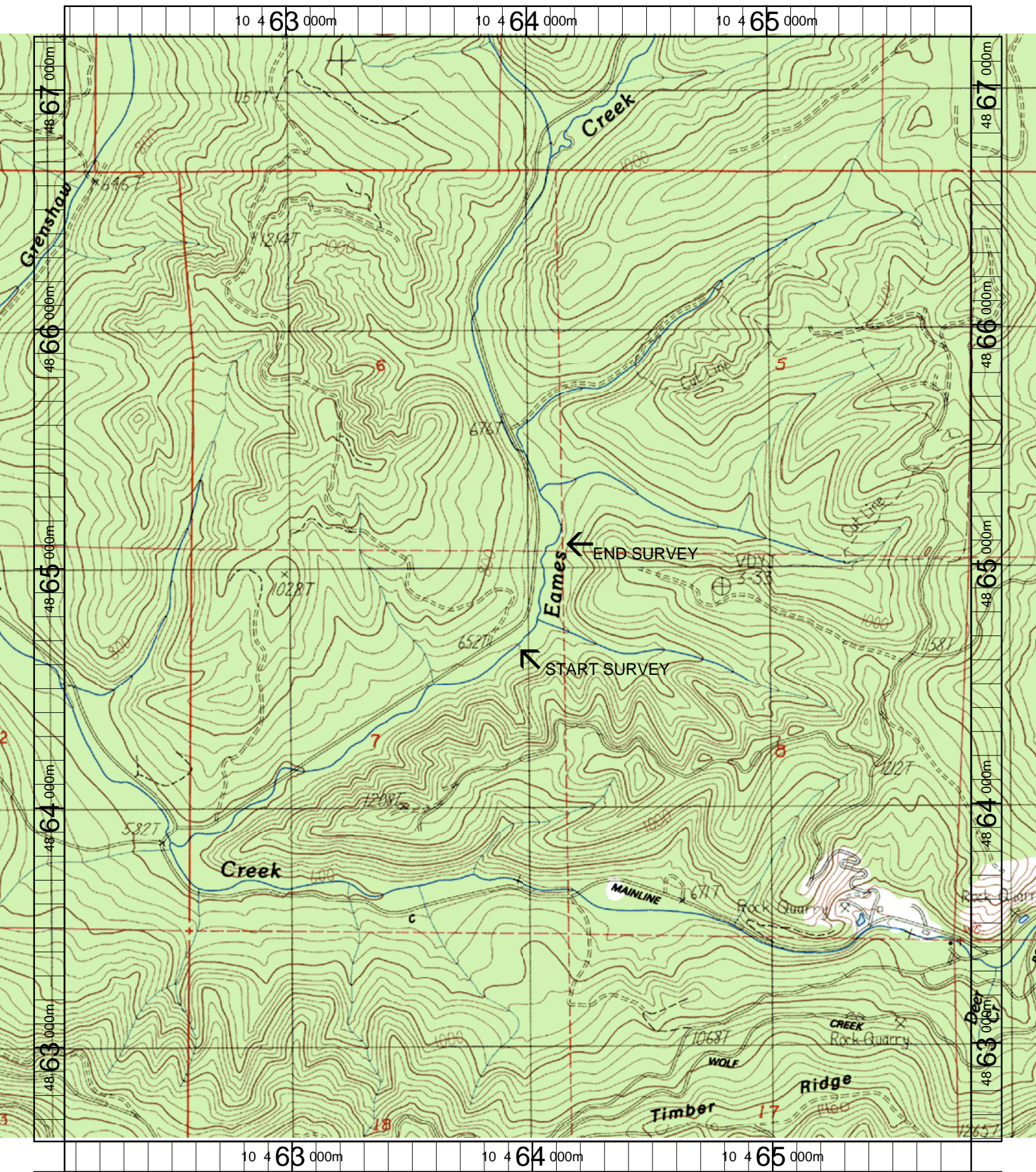
POOL SUMMARY			
	Total of all Channel Lengths		Primary Channel Length
	<u>Total</u>	<u># / Km</u>	<u># / Km</u>
All Pools:	15	27.4	29.2
Pools >=1m deep:	0	0.0	0.0
Complex pools (LWD pieces>=3):	8	14.6	15.6
Pool frequency (channel widths/pool):	6.0		
Residual pool depth (avg):	0.31		

Comment Summary

Restoration Monitoring Sites 2005

MONITORING AREA: **2-MC** SITE ID: **177** **EAMES CREEK POST-TX**

UNIT#	TYPE	CHAN	DIST. (m)	COMMENTS	NOTE ESTIMATOR	NOTE NUMERATOR
1	GL	01	11.7	TJ/, HS	CT MT M30 C50 TH LT	
4	SR	00	17.25		H = 0.35	
9	LP	00	63.55		SALMON JUVIES	
10	LP	00	75.05	HS	JUVENILE SALMONIDS	
11	RI	01	102.05	TJ/ HS	JUVENILE SALMONIDS	
14	RI	00	135.55		CT MT D15 S ST	
16	LP	00	172.05		COHO CARCASS	
18	LP	00	207.05	HS, DJ		
20	GL	00	237.15		ADULT COHO	
21	RI	00	250.65		COHO CARCASS	
22	SL	00	251.05		H=0.5	
23	LP	00	274.85		CT MT M50 S LT	
24	RI	00	288.45	DJ	2 COHO CARCASSES	
26	RI	00	344.45	HS		
30	RB	00	402.65		CT MT C30 D15 LT	
31	LP	00	418.45		US MT M30 S LT	
33	SL	01	443.75	DJ	H=0.4	
34	LP	01	485.75	BV	LIVE FISH, DEAD COHO	
35	LP	01	514.25	HS		



Name: HIGH POINT
 Date: 6/11/2003
 Scale: 1 inch equals 1666 feet

Location: 10 463947 E 4864909 N
 Caption: EAMES CREEK RESTORATION SITE - SIUSLAW BASIN