

REACH

T19S-R06W-S07NE

REACH

**Valley and Channel Summary**

Valley Characteristics (Percent Reach Length)

<u>Narrow Valley Floor</u>		<u>Broad Valley Floor</u>	
Steep V-shape	0%	Constraining Terraces	100%
Moderate V-shape	0%	Multiple Terraces	0%
Open V-shape	0%	Wide Floodplain	0%
Valley Width Index	9.4	VWI Range:	8 - 11

Channel Morphology (Percent Reach Length)

<u>Constrained</u>		<u>Unconstrained</u>	
Hillslope	0%	Single Channel	0%
Bedrock	0%	Multiple Channel	0%
Terrace	0%	Braided Channel	0%
Alt. Terrace/Hill	100%		
Landuse	0%		

Channel Characteristics

<u>Type</u>	<u>Length (m)</u>	<u>Area (m2)</u>	<u>Dry Units</u>
Primary	516	3,166	0
Secondary	15	29	0

Channel Dimensions (m)

<u>Wetted</u>		<u>Active</u>		<u>Floodprone</u>	<u>First Terrace</u>
Width	5.9	Width	8.4	10.5	13.1
Depth	0.48	Height	0.6	1.2	1.7
		W:D ratio	14.1	Entrenchment	1.3

Stream Flow Type:	HF	Water temp (C):	9.5 - 9.5
Avg. Unit Gradient:	1.0%	Habitat Units/100m:	5.8

**Riparian, Bank, and Wood Summary**

	<u>Primary</u>	<u>Secondary</u>
Land Use:	YT	ST
Riparian Vegetation:	D15	C30

Bank Condition and Shade

<u>Bank Status</u>	<u>Percent Reach Length</u>	<u>Shade (% of 180)</u>
Actively Eroding:		Reach avg:
Undercut Banks:		Range: -

Large Wood Debris

	<u>Total</u>	<u>Total / 100m</u>
All pieces (>=3m x 0.15m):	58	11.2
Volume (m <sup>3</sup> ):	62	11.9
Key pieces (>=10m x 0.60m):	6	1.2

OREGON DEPARTMENT OF FISH AND WILDLIFE

EAMES CREEK PRE-TX (MC-177)

HABITAT INVENTORY

Report Date: 5/6/03

Survey Date:

1/27/03

REACH		T19S-R06W-S07NE					REACH					
Habitat Type	Number Units	HABITAT DETAIL					Substrate					
		Total	Avg	Avg	Total	Large	Percent Wetted Area					
		Length (m)	Width (m)	Depth (m)	Area (m <sup>2</sup> )	Boulders (#>0.5m)	S/O	Snd	Grvl	Cbl	Bldr	Bdrk
CASCADE/BEDROCK	1	9	5.5	0.25	50	0	0	0	0	0	0	100
POOL-BACKWATER	2	7	2.5	0.43	18	0	43	33	0	0	0	25
POOL-DAMMED	3	107	6.3	0.92	665	0	25	32	5	2	0	37
POOL-LATERAL SCOUR	8	201	6.1	0.73	1,249	0	16	22	10	1	1	50
POOL-PLUNGE	2	24	7.5	0.80	176	0	8	8	8	0	3	75
POOL-STRAIGHT SCOUR	1	23	5.8	0.70	133	0	10	20	0	0	0	70
RAPID/BEDROCK	2	53	5.3	0.23	277	0	0	3	0	0	0	98
RAPID/BOULDERS	2	18	3.7	0.18	69	0	3	8	51	0	39	0
RIFFLE	2	36	6.1	0.20	211	0	5	3	3	3	0	88
RIFFLE W/ POCKETS	1	36	6.0	0.35	216	0	20	20	0	0	0	60
STEP/BEDROCK	2	8	7.6	0.18	56	0	0	0	0	0	0	100
STEP/COBBLE	1	8	7.5	0.15	60	0	10	10	80	0	0	0
STEP/LOG	3	3	6.1	0.14	16	0	13	20	55	3	0	8
<b>Total:</b>	<b>30</b>	<b>531</b>	<b>5.9</b>	<b>0.48</b>	<b>3,195</b>	<b>0</b>	<b>Avg 13</b>	<b>16</b>	<b>15</b>	<b>1</b>	<b>3</b>	<b>51</b>

HABITAT SUMMARY								
Habitat Group	Number Units	Total Length (m)	Avg Width (m)	Avg Depth (m)	Wetted Area		Large Boulders	
					(m <sup>2</sup> )	Percent	Number	(# / 100m <sup>2</sup> )
Dammed & BW Pools	5	114	4.8	0.72	683	21.37%	0	0.0
Scour Pools	11	248	6.3	0.74	1,558	48.76%	0	0.0
Glides	0	0			0	0.00%	0	0.0
Riffles	3	72	6.0	0.25	427	13.37%	0	0.0
Rapids	4	71	4.5	0.20	346	10.82%	0	0.0
Cascades	1	9	5.5	0.25	50	1.55%	0	0.0
Step/Falls	6	19	6.8	0.16	132	4.13%	0	0.0
Dry	0	0			0	0.00%	0	0.0
Culverts	0	0			0	0.00%	0	0.0

POOL SUMMARY		
	Total	# / Km
All Pools:	16	31.0
Pools >=1m deep:	1	1.9
Complex pools (LWD pieces>=3):	6	11.6
Pool frequency (channel widths/pool):	3.9	
Residual pool depth (avg):	0.44	

**STREAM SUMMARY**

**EAMES CREEK PRE-TX (MC-177)**

Number Units	Total Length (m)	Avg Width (m)	Avg Depth (m)	Total Area (m <sup>2</sup> )	Substrate Percent Wetted Area						Large Boulders (>0.5m)
					S/O	Snd	Grvl	Cbl	Bldr	Bdrk	
30	531	5.9	0.48	3,195	13	16	15	1	3	51	

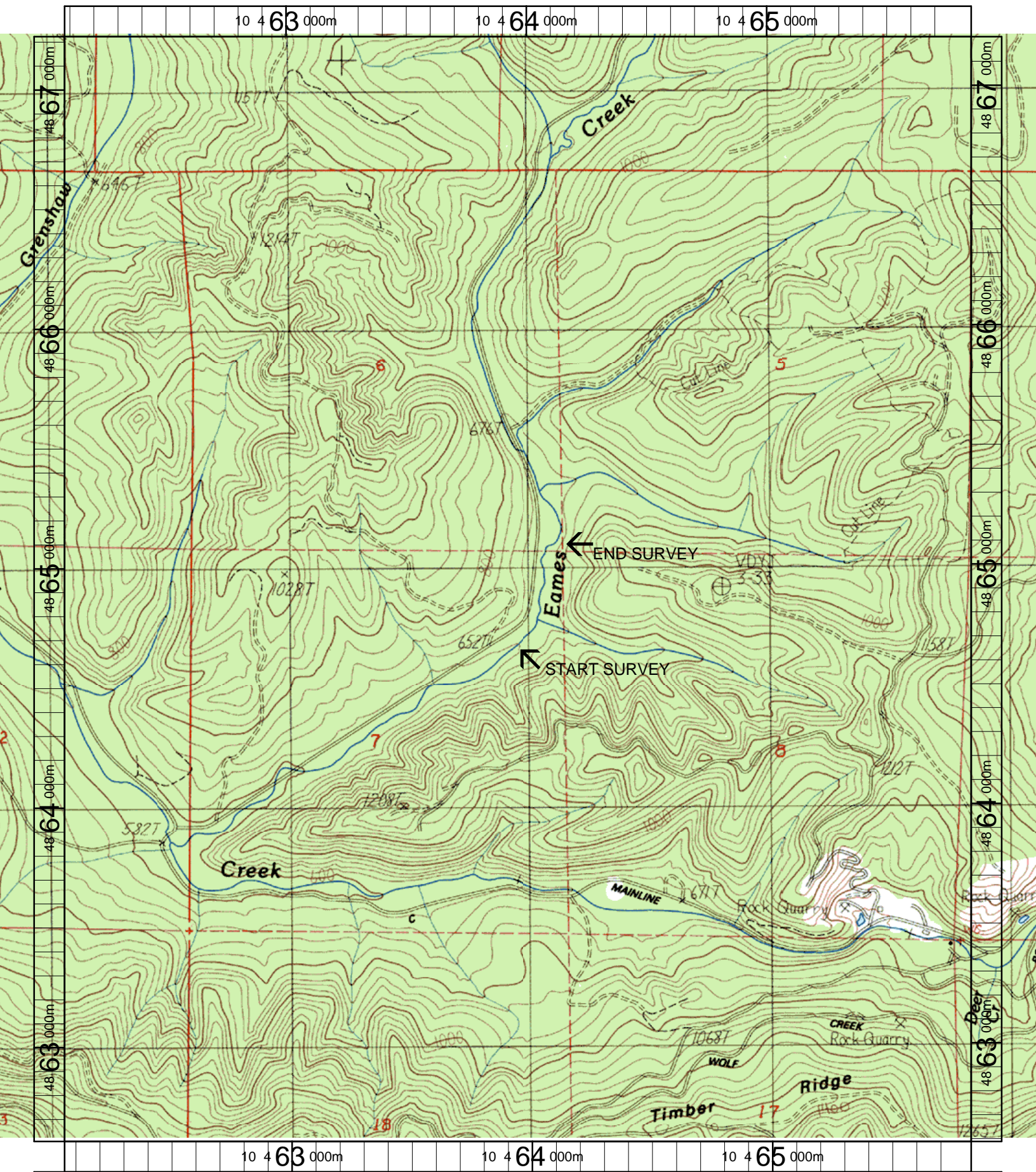
Habitat Group	Wetted Area	
	(m <sup>2</sup> )	Percent
Dammed & BW Pools	683	21.37%
Scour Pools	1,558	48.76%
Glides	0	0.00%
Riffles	427	13.37%
Rapids	346	10.82%
Cascades	50	1.55%
Step/Falls	132	4.13%
Dry	0	0.00%
Culverts	0	0.00%

# Comment Summary

## Restoration Monitoring Sites 2003

MONITORING AREA: 2-MC    SITE ID: 177    EAMES CREEK PRE-TX (MC-177)

UNIT#	TYPE	CHAN	DIST. (m)	COMMENTS	NOTE ESTIMATOR	NOTE NUMERATOR
1	PP	00	16.4	SS/	T=14C	
2	SR	00	18.4		H=.6M	
6	LP	00	61.7		CO CARCASS	
7	RP	01	97.7		ORANGE FLAG "1786M 4"	
9	SL	00	98.3		CO CARCASS, H=.3M	
11	RB	11	121.3		ACW=2.0, 5% FLOW	
13	RI	00	172.3		REDD	
14	LP	00	201.3	/SS	ORANGE FLAG 304M 5, C	
15	SL	00	201.5		H=.3M	
16	DP	00	244		CO CARCASS	
17	SL	00	245.7		H=.7	
18	DP	00	284.7	/SS		
20	CR	00	340.2		LOG @ TOP CREATES PO	
25	RR	00	438.4	BV	5% FLOW FROM OLD BV	
26	LP	00	473.4		FRESHWATER MUSSEL	
28	LP	01	493.4	SS/		



Name: HIGH POINT  
 Date: 6/11/2003  
 Scale: 1 inch equals 1666 feet

Location: 10 463947 E 4864909 N  
 Caption: EAMES CREEK RESTORATION SITE - SIUSLAW BASIN