

OREGON DEPARTMENT OF FISH AND WILDLIFE ESMOND CREEK MIDDLE POST-TX (MC-138)

HABITAT INVENTORY

Report Date: 5/6/03

Survey Date:

2/10/03

REACH		T19S-R08W-S28NW						REACH					
Habitat Type	Number Units	HABITAT DETAIL						Substrate					
		Total	Avg	Avg	Total	Large	Percent Wetted Area						
		Length (m)	Width (m)	Depth (m)	Area (m ²)	Boulders (#>0.5m)	S/O	Snd	Grvl	Cbl	Bldr	Bdrk	
CASCADE/BEDROCK	1	13	2.2	0.30	28	0	60	40	0	0	0	0	
GLIDE	1	28	8.5	0.25	238	0	0	0	5	0	0	95	
POOL-BACKWATER	2	12	3.3	0.60	39	0	10	52	24	2	0	12	
POOL-ISOLATED	3	19	2.1	0.50	61	0	44	52	4	0	0	0	
POOL-LATERAL SCOUR	8	295	9.4	0.68	2,802	0	7	15	22	2	6	47	
POOL-PLUNGE	1	23	12.0	0.95	276	0	0	9	26	9	9	48	
POOL-STRAIGHT SCOUR	1	68	11.5	0.65	782	0	9	26	26	9	4	26	
RAPID/BEDROCK	1	39	9.0	0.20	351	0	0	0	0	0	5	95	
RIFFLE	5	81	10.0	0.12	839	0	0	2	17	6	3	72	
RIFFLE W/ POCKETS	1	12	7.8	0.30	94	0	0	0	5	5	27	64	
STEP/BEDROCK	2	9	6.2	0.05	52	0	0	0	12	2	0	86	
STEP/COBBLE	1	3	2.7	0.05	9	0	10	10	76	5	0	0	
Total:	27	602	7.6	0.43	5,570	0	Avg 11	18	18	3	4	47	

HABITAT SUMMARY								
Habitat Group	Number Units	Total Length (m)	Avg Width (m)	Avg Depth (m)	Wetted Area		Large Boulders	
					(m ²)	Percent	Number	(# / 100m ²)
Dammed & BW Pools	5	31	2.6	0.54	100	1.80%	0	0.0
Scour Pools	10	386	9.9	0.71	3,860	69.30%	0	0.0
Glides	1	28	8.5	0.25	238	4.27%	0	0.0
Riffles	6	93	9.6	0.15	933	16.74%	0	0.0
Rapids	1	39	9.0	0.20	351	6.30%	0	0.0
Cascades	1	13	2.2	0.30	28	0.50%	0	0.0
Step/Falls	3	12	5.0	0.05	61	1.09%	0	0.0
Dry	0	0			0	0.00%	0	0.0
Culverts	0	0			0	0.00%	0	0.0

POOL SUMMARY		
	<u>Total</u>	<u># / Km</u>
All Pools:	15	28.1
Pools >=1m deep:	1	1.9
Complex pools (LWD pieces>=3):	6	11.2
Pool frequency (channel widths/pool):	3.4	
Residual pool depth (avg):	0.41	

STREAM SUMMARY

ESMOND CREEK MIDDLE POST-TX (MC-138)

Number Units	Total Length (m)	Avg Width (m)	Avg Depth (m)	Total Area (m ²)	Substrate Percent Wetted Area						Large Boulders (#>0.5m)
					S/O	Snd	Grvl	Cbl	Bldr	Bdrk	
27	602	7.6	0.43	5,570	11	18	18	3	4	47	

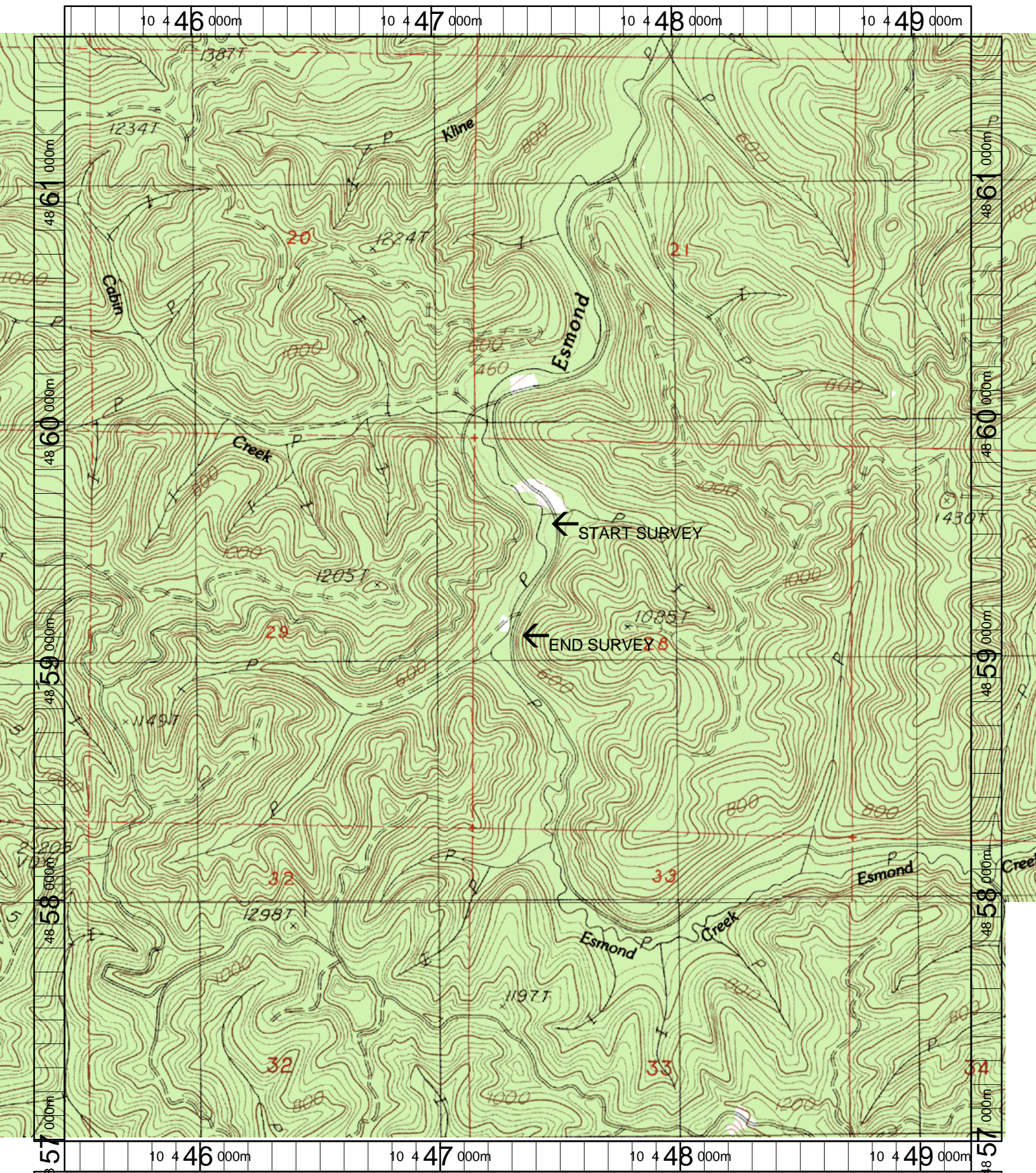
Habitat Group	Wetted Area	
	(m ²)	Percent
Dammed & BW Pools	100	1.80%
Scour Pools	3,860	69.30%
Glides	238	4.27%
Riffles	933	16.74%
Rapids	351	6.30%
Cascades	28	0.50%
Step/Falls	61	1.09%
Dry	0	0.00%
Culverts	0	0.00%

Comment Summary

Restoration Monitoring Sites 2003

MONITORING AREA: 2-MC SITE ID: 138 ESMOND CREEK MIDDLE POST-TX (MC-138)

UNIT#	TYPE	CHAN	DIST. (m)	COMMENTS	NOTE ESTIMATOR	NOTE NUMERATOR
1	LP	01	25.2	HS, TJ/		ORANGE FLAG "SITE 4"
2	SR	11	25.2			H=1.1, ACW=4
5	SR	01	92.2			H=1.15
10	IP	10	177.8			EGG CASES-JELLY
14	SC	02	177.8	DJ		CARCASS
15	PP	00	200.8	HS		
16	LP	01	262.3	HS, SS/		CARCASS, RACCOON TR
17	IP	10	262.3	HS		
18	LP	00	286.7			"SITE 6" REST. SIGN
19	RI	00	296.7			AQU INV U290, 6-27-01
23	RI	00	425.7	/SS		
24	GL	00	453.7	/SS		
25	RP	00	465.7	HS		
26	LP	00	514.3	HS		



Name: ROMAN NOSE MT
 Date: 3/20/2003
 Scale: 1 inch equals 1666 feet

Location: 10 447338 E 4859290 N
 Caption: ESMOND CREEK (MIDDLE) RESTORATION SITE -
 SIUSLAW BASIN